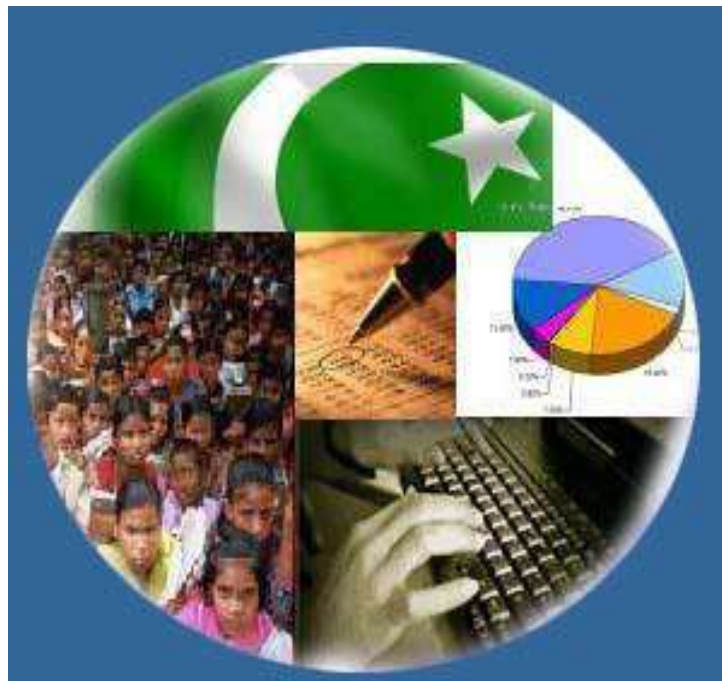




Monthly Review on Price Indices



June, 2020
(Base Year 2015-16)

Government of Pakistan
Ministry of Planning, Development & Special Initiatives
Pakistan Bureau of Statistics
Islamabad

Inflation in Brief

1. **CPI inflation General**, increased by 8.6% on year-on-year basis in June 2020 as compared to an increase of 8.2% in the previous month and 8.0% in June 2019. On month-on-month basis, it increased by 0.8% in June 2020 as compared to an increase of 0.3% in the previous month and an increase of 0.5% in June 2019.
2. **CPI inflation Urban**, increased by 7.6% on year-on-year basis in June 2020 as compared to an increase of 7.3% in the previous month and 8.1% in June 2019. On month-on-month basis, it increased by 0.7% in June 2020 as compared to an increase of 0.3% in the previous month and an increase of 0.3% in June 2019.
3. **CPI inflation Rural**, increased by 10.0% on year-on-year basis in June 2020 as compared to an increase of 9.7% in the previous month and 7.9% in June 2019. On month-on-month basis, it increased by 1.0% in June 2020 as compared to an increase of 0.3% in the previous month and an increase of 0.7% in June 2019.
4. **SPI inflation** on YoY increased by 11.5% in June 2020 as compared to an increase of 11.0% a month earlier and an increase of 9.3% in June 2019. On MoM basis, it increased by 1.4% in June 2020 as compared to an increase of 2.2% a month earlier and an increase of 0.9% in June 2019.
5. **WPI inflation** on YoY basis increased by 0.9% in June 2020 as compared to an increase of 1.5% a month earlier and an increase of 14.0% in June 2019. WPI inflation on MoM basis decreased by 0.3% in June 2020 as compared to a decrease of 2.1% a month earlier and an increase of 0.2% in corresponding month of last year i.e. June 2019.
6. Figures 1 and 2 show graphically the yearly data of Table 1.a for Urban and Rural CPI while Table 1.1 shows "Period Average" and "YoY" percent changes in indices of three years.

Table 1.a General Inflation (%) (Base 2015-16)																		
PERIOD	CPI														SPI**		WPI	
	General						Food				Non-Food							
	National		Urban		Rural		Urban		Rural		Urban		Rural		YoY	MoM	YoY	MoM
	YoY	MoM	YoY	MoM	YoY	MoM	YoY	MoM	YoY	MoM	YoY	MoM	YoY	MoM				
Jan-19	5.6	0.3	6.2	0.4	4.6	-0.0	2.6	0.3	1.83	-0.0	8.2	0.5	7.0	-0.0	3.4	0.4	12.6	-0.8
Feb-19	6.8	0.9	7.2	0.9	6.0	0.9	5.9	2.3	5.19	1.7	8.0	0.1	6.7	0.2	7.2	2.5	13.9	1.6
Mar-19	8.6	2.0	8.9	1.9	8.2	2.2	8.8	2.5	9.28	3.3	9.0	1.5	7.3	1.3	10.5	2.1	16.6	2.2
Apr-19	8.3	0.7	8.4	0.8	8.1	0.6	8.3	1.3	9.26	0.6	8.4	0.6	7.2	0.6	10.0	0.5	17.2	2.0
May-19	8.4	0.6	8.5	0.7	8.3	0.5	9.0	1.3	9.75	0.6	8.3	0.3	7.1	0.4	9.9	0.6	16.5	1.2
Jun-19	8.0	0.5	8.1	0.3	7.9	0.7	7.5	-0.3	9.1	0.7	8.4	0.7	7.0	0.7	9.3	0.9	14.0	0.2
Jul-19	8.4	1.8	8.7	2.0	7.9	1.6	7.9	1.0	9.3	1.7	9.2	2.5	6.7	1.5	8.9	1.0	13.3	3.1
Aug-19	10.5	1.6	10.6	1.5	10.3	1.9	11.9	3.1	12.6	2.9	9.9	0.5	8.4	1.1	12.1	2.7	14.1	1.2
Sep-19	11.4	0.8	11.6	0.7	11.1	0.8	15.0	2.0	15.0	1.8	9.7	0.0	8.0	0.0	14.7	1.9	15.9	0.1
Oct-19	11.0	1.8	10.9	1.6	11.3	2.2	13.7	1.4	14.6	2.6	9.3	1.7	8.7	1.8	15.1	2.7	13.3	2.0
Nov-19	12.7	1.3	12.1	1.0	13.6	1.9	16.6	2.4	19.3	3.4	9.6	0.2	9.0	0.6	20.2	3.7	11.2	-0.8
Dec-19	12.6	-0.3	12.0	-0.4	13.6	-0.3	16.7	-1.7	19.7	-1.1	9.5	0.4	8.8	0.4	18.1	-2.0	12.4	-0.3
Jan-20	14.6	2.0	13.4	1.7	16.3	2.4	19.5	2.7	23.8	3.4	10.2	1.1	10.5	1.5	18.3	0.5	15.4	1.8
Feb-20	12.4	-1.0	11.2	-1.1	14.2	-1.0	15.2	-1.4	19.7	-1.6	9.1	-0.9	9.8	-0.4	14.5	-0.8	12.6	-0.8
Mar-20	10.2	0.04	9.3	0.1	11.7	-0.1	13.0	0.6	15.5	-0.3	7.3	-0.1	8.5	0.1	11.8	-0.3	9.2	-0.9
Apr-20	8.5	-0.8	7.7	-0.7	9.8	-1.1	10.4	-1.0	12.9	-1.7	6.2	-0.5	7.4	-0.5	9.3	-1.8	4.9	-2.0
May-20	8.2	0.3	7.3	0.3	9.7	0.3	10.6	1.5	13.7	1.4	5.4	-0.4	6.4	-0.5	11.0	2.2	1.5	-2.1
June-20	8.6	0.8	7.6	0.7	10.0	1.0	12.9	1.8	15.2	2.0	4.7	0.0	5.8	0.1	11.5	1.4	0.9	-0.3

** SPI for quintile 1. Digits 0.0* are due to rounding off.

Core inflation (NFNE)

7. Measured by **non-food non-energy Urban CPI** increased by 6.5% on (YoY) basis in June 2020 as compared to an increase of 6.3% in the previous month and 7.3% in June 2019. On (MoM) basis, it increased by 0.4% in June 2020 as compared to increase of 0.4% in previous month, and an increase of 0.2% in corresponding month of last year i.e. June 2019.
8. Measured by **non-food non-energy Rural CPI** increased by 8.8% on (YoY) basis in June 2020 as compared to an increase of 8.4% in the previous month and 6.7% in June 2019. On (MoM) basis, it increased by 0.7% in June 2020 as compared to an increase of 0.4% in previous month, and an increase of 0.3% in corresponding month of last year i.e. June 2019.

Core inflation (Trimmed)

9. Measured by 20% **weighted trimmed mean Urban CPI** increased by 7.4% on (YoY) basis in June 2020 as compared to 6.7% in the previous month and by 7.3% in June 2019. On (MoM) basis, it increased by 0.4% in June 2020 as compared to an increase of 0.4% in the previous month and an increase of 0.4% in corresponding month of last year i.e. June 2019.
10. Measured by 20% **weighted trimmed mean Rural CPI** increased by 9.9% on (YoY) basis in June 2020 as compared to 8.9% in the previous month and by 7.2% in June 2019. On (MoM) basis, it increased by 0.9% in June 2020 as compared to an increase of 0.5% in the previous month and an increase of 0.7% in corresponding month of last year i.e. June 2019.

Table 1.b Core Inflation (%) (Base 2015-16)

Period	NFNE				Trimmed			
	Urban		Rural		Urban		Rural	
	YoY	MoM	YoY	MoM	YoY	MoM	YoY	MoM
Jun-19	7.3	0.2	6.7	0.3	7.3	0.4	7.2	0.7
Jul-19	8.2	1.8	7.8	2.0	7.8	1.4	7.4	1.6
Aug-19	8.5	0.4	8.8	1.0	8.5	0.6	8.7	1.2
Sep-19	8.4	0.4	8.8	0.3	9.3	0.6	9.6	0.6
Oct-19	7.7	0.5	8.6	0.7	8.9	0.5	9.4	0.7
Nov-19	7.5	0.3	8.4	0.5	9.5	0.4	10.7	0.7
Dec-19	7.5	0.4	8.1	0.3	9.6	0.2	10.8	0.3
Jan-20	7.9	1.1	9.0	1.0	10.3	1.2	12.7	1.9
Feb-20	8.0	0.2	9.4	0.5	9.7	0.1	12.8	0.6
Mar-20	7.4	0.3	9.4	0.6	8.7	0.3	11.4	0.1
Apr-20	6.4	0.2	8.5	0.3	6.7	-0.2	9.3	-0.6
May-20	6.3	0.4	8.4	0.4	6.7	0.4	8.9	0.5
June-20	6.5	0.4	8.8	0.7	7.4	0.4	9.9	0.9

Table 1.1 Period Average and YoY % Change

INDEX	Average July- June % changes			June over June % changes		
	2019-2020	2018-2019	2017-2018	2020	2019	2018
CPI (National)	10.74	6.80	4.68	8.59	8.04	5.67
CPI(Urban)	10.17	7.09	5.10	7.65	8.10	5.85
CPI(Rural)	11.62	6.34	4.08	10.03	7.94	5.40
SPI	13.74	5.11	2.47	11.51	9.30	2.78
WPI	10.24	15.98	5.27	0.93	13.98	11.38

Figure 1: UCPI Inflation YoY, Special Indices

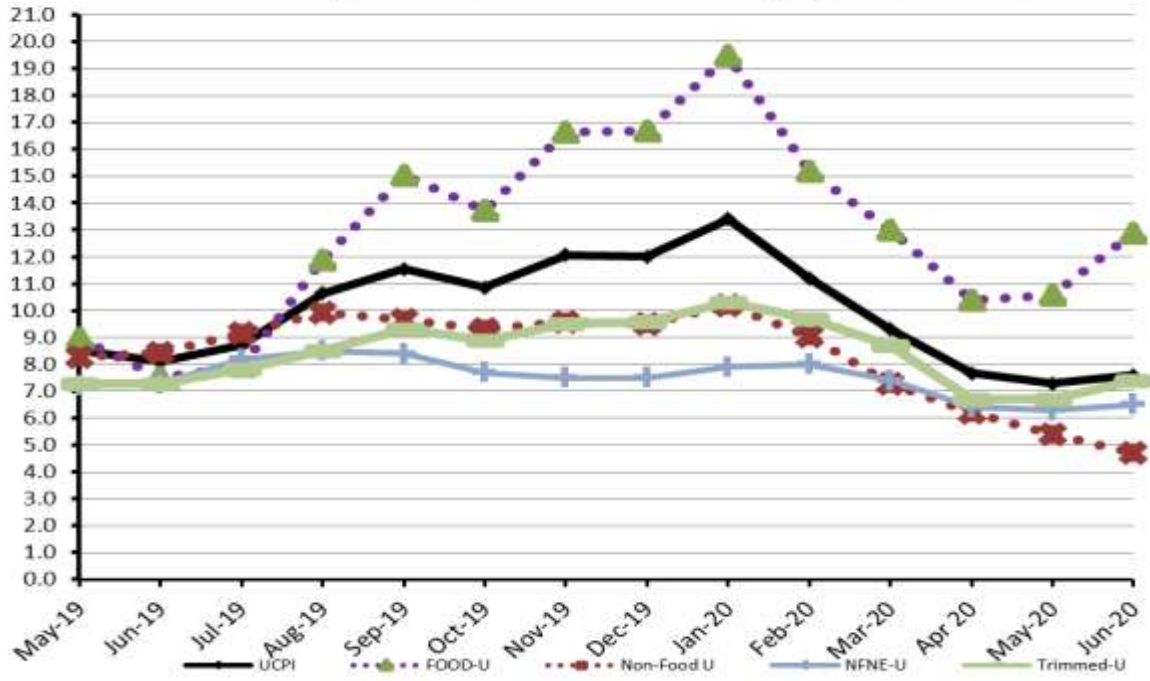
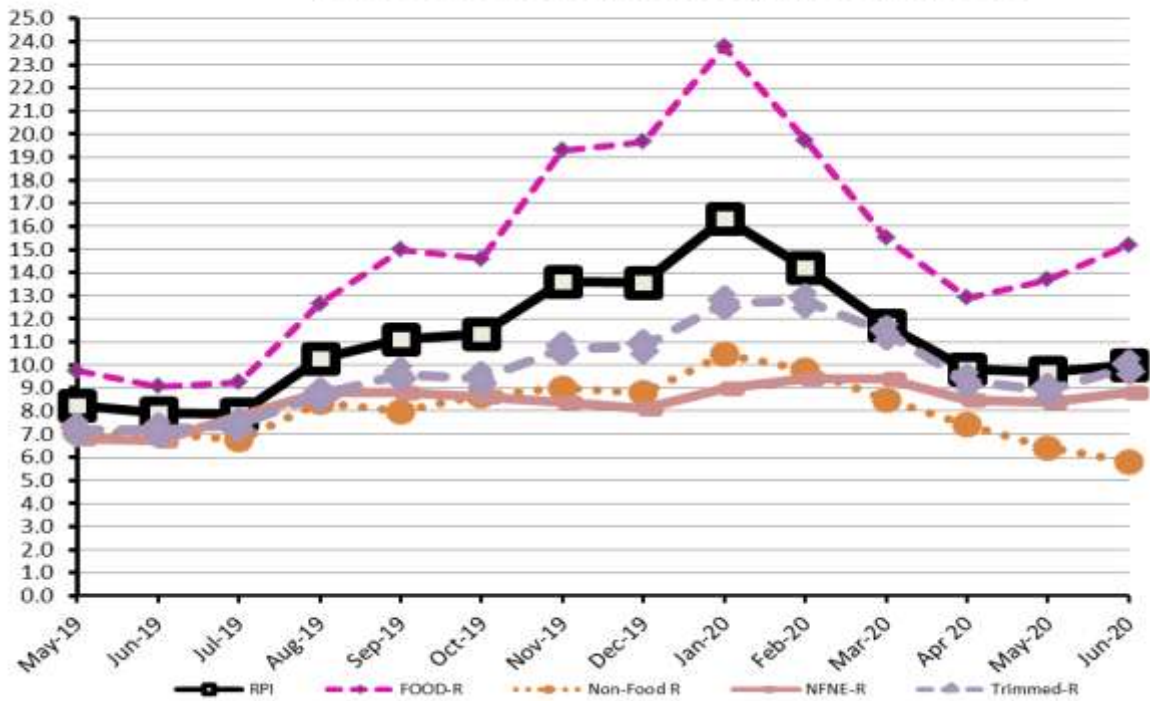


Figure 2: RCPI Inflation YoY, Special Indices



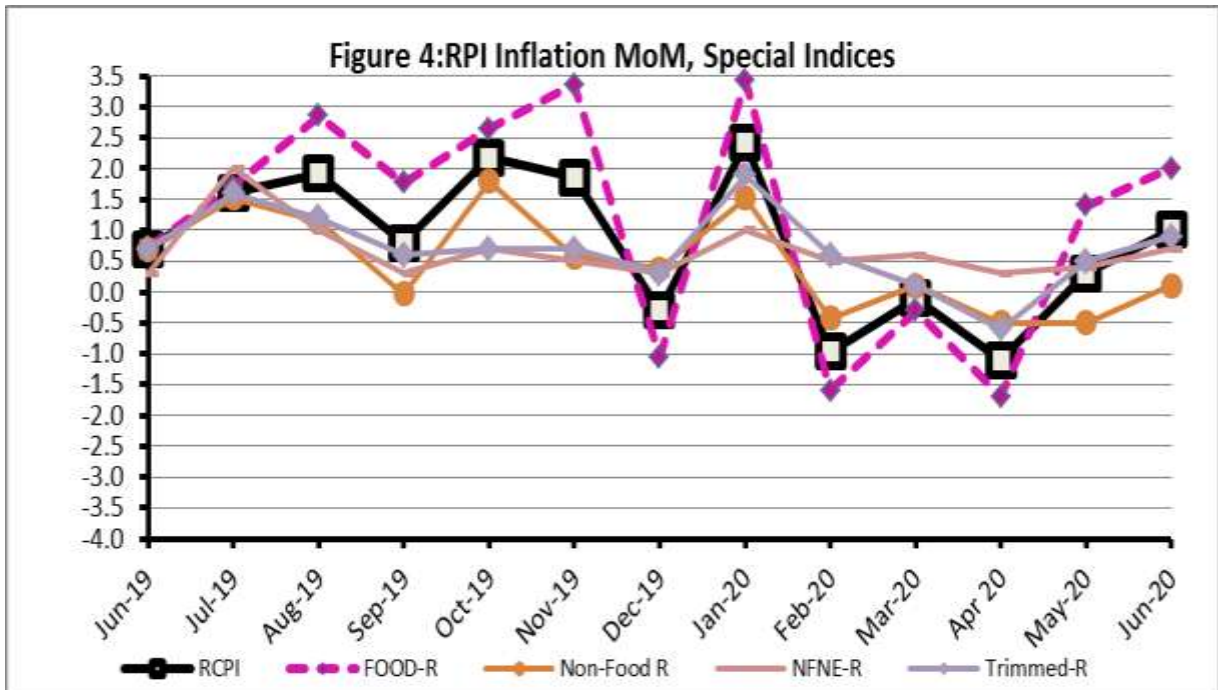
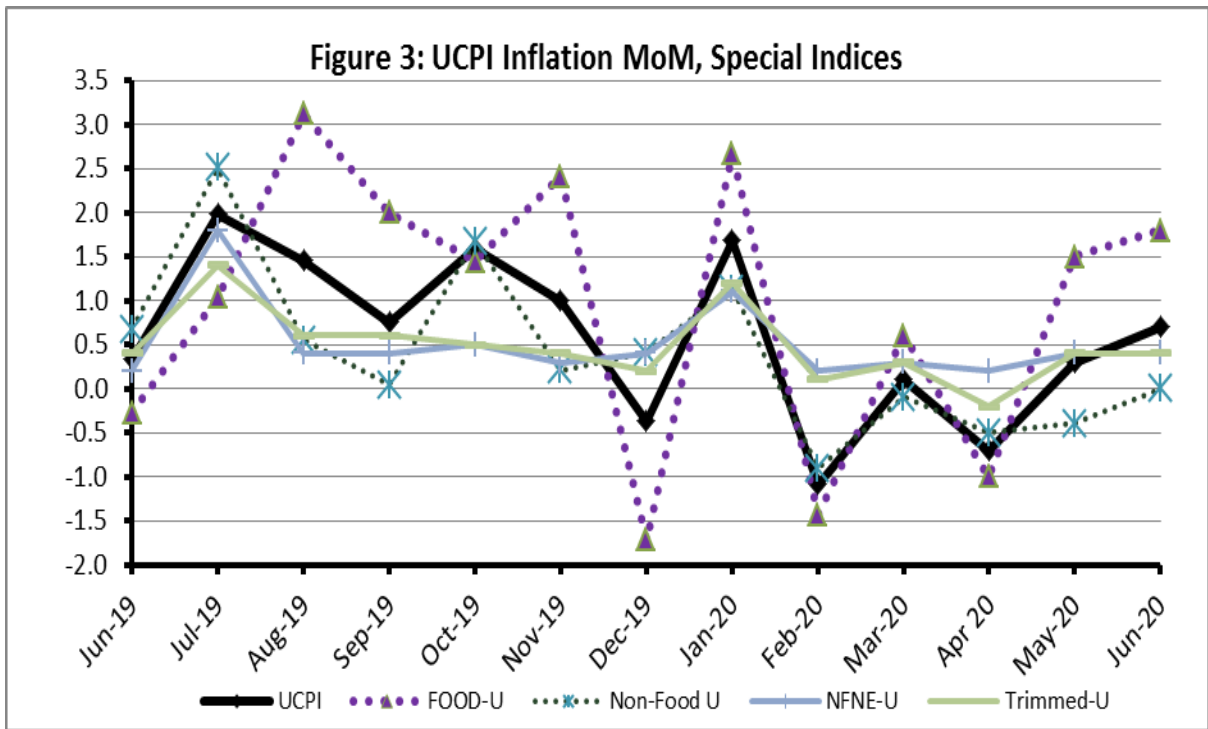


Figure 5: CPI Y.o.Y (National, Urban, Rural)

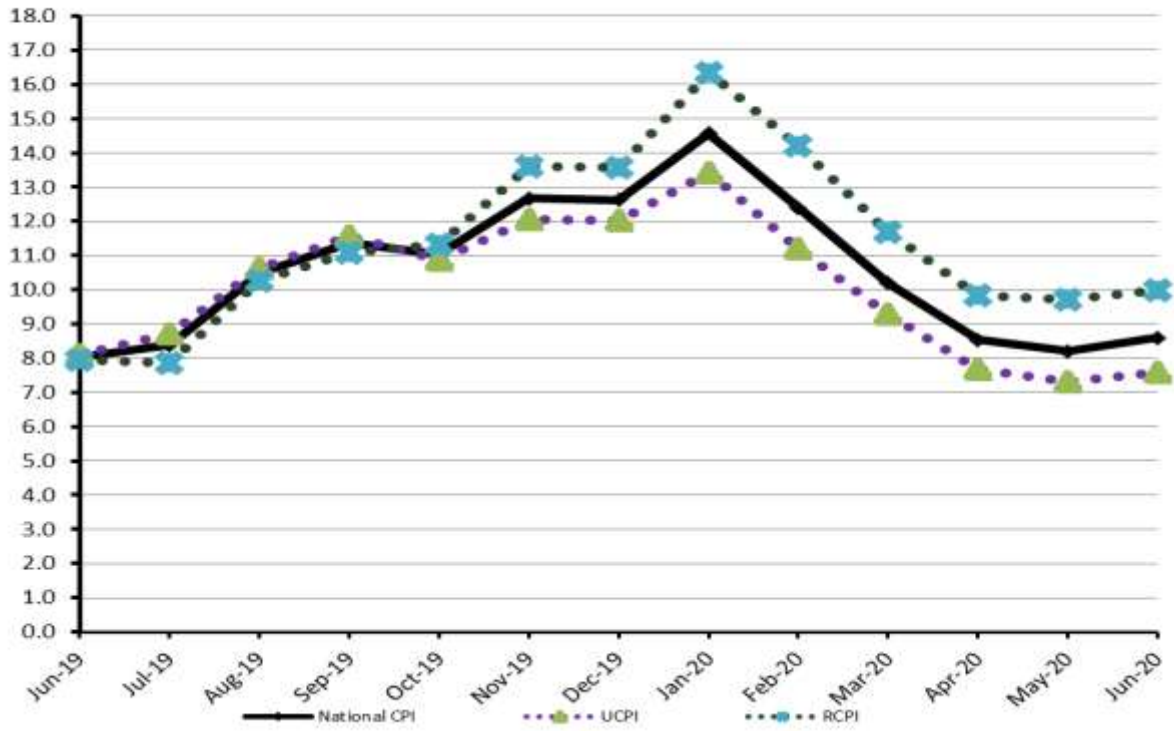
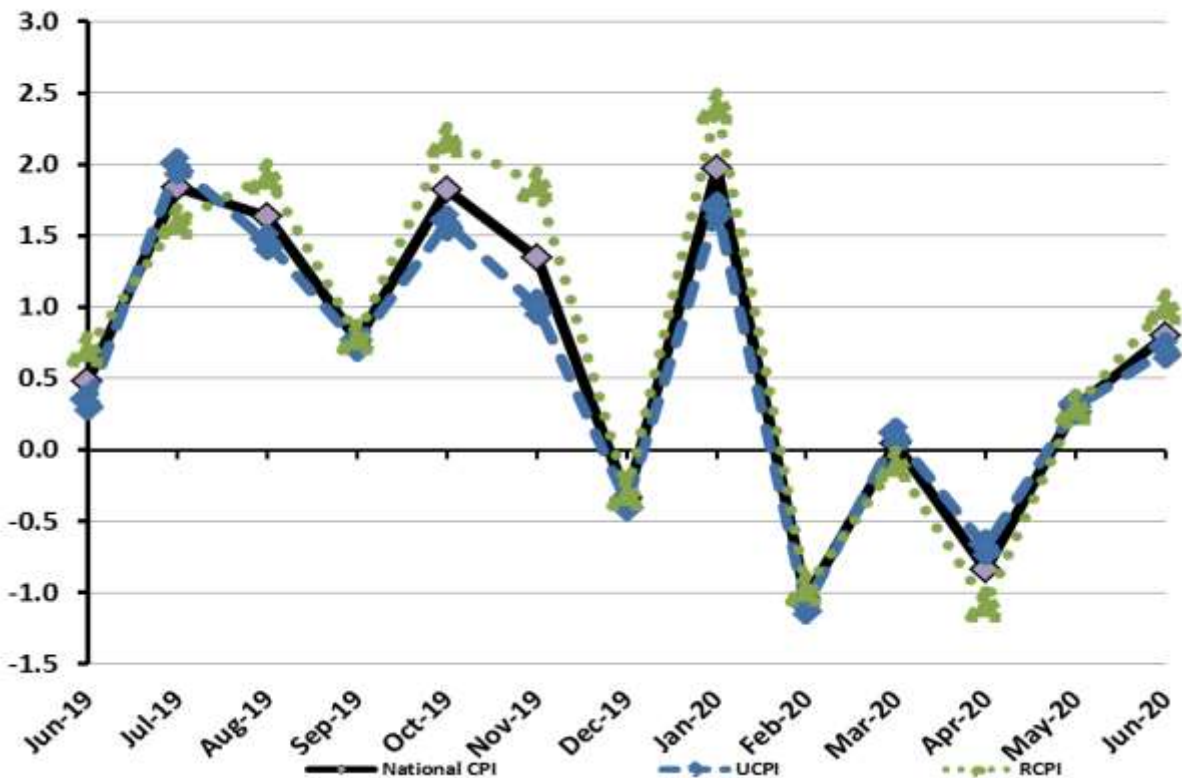


Figure 6: CPI M.o.M (National, Urban, Rural)



I. National Consumer Price Index (N-CPI)

The **National Consumer Price Index** of June 2020 is increased by **0.82%** over May 2020 and increased by **8.59%** over corresponding month of the last year i.e. June 2019.

Table 1 : Consumer Price Index (National) by Group of Commodities and Services (Base 2015-16)

No	Group	Group Weight (%)	Indices			% Change June 2020 Over		Impact (In % points) June 2020 Over	
			June 2020	May 2020	June 2019	May 2020	June 2019	May 2020	June 2019
	General	100.00	132.08	131.01	121.63	0.82	8.59	0.82	8.59
1.	Food & Non-alcoholic Bev.	34.58	134.90	132.13	117.75	2.10	14.57	0.73	4.88
	<i>Non-perishable Food Items</i>	29.60	134.89	131.11	116.36	2.88	15.93	0.85	4.51
	<i>Perishable Food Items</i>	4.99	134.98	138.16	126.01	-2.30	7.12	-0.12	0.37
2.	Alcoholic Bev. & Tobacco	1.02	137.90	137.65	120.72	0.18	14.23	0.00	0.14
3.	Clothing & Footwear	8.60	135.64	134.58	122.15	0.78	11.04	0.07	0.95
4.	Housing, Water, Electricity, Gas & Fuels	23.63	128.43	128.63	121.82	-0.16	5.42	-0.04	1.28
5.	Furnishing & Household Equipment Maintenance	4.10	129.33	128.74	118.91	0.46	8.76	0.02	0.35
6.	Health	2.79	140.67	140.36	128.75	0.22	9.26	0.01	0.27
7.	Transport	5.91	122.95	124.27	136.97	-1.07	-10.24	-0.06	-0.68
8.	Communication	2.21	106.96	106.96	105.31	0.00	1.57	0.00	0.03
9.	Recreation & Culture	1.59	119.96	119.85	114.49	0.10	4.78	0.00	0.07
10.	Education	3.79	142.40	142.40	139.64	0.00	1.98	0.00	0.09
11.	Restaurants & Hotels	6.92	131.81	131.12	120.98	0.53	8.95	0.04	0.62
12.	Miscellaneous	4.87	138.30	137.16	123.87	0.84	11.65	0.04	0.58

II. Urban Consumer Price Index (UCPI)

The **Urban Consumer Price Index** of June 2020 is increased by **0.69%** over May 2020 and increased by **7.65%** over corresponding month of the last year i.e. June 2019.

Table 2 : Consumer Price Index (Urban) by Group of Commodities and Services (Base 2015-16)

No	Group	Group Weight (%)	Indices			% Change June 2020 Over		Impact (In % points) June 2020 Over	
			June 2020	May 2020	June 2019	May 2020	June 2019	May 2020	June 2019
	General	100.00	131.89	130.99	122.52	0.69	7.65	0.69	7.65
1.	Food & Non-alcoholic Bev.	30.42	134.23	131.55	117.97	2.04	13.78	0.62	4.04
	Non-perishable Food Items	25.97	133.77	130.25	115.66	2.70	15.66	0.70	3.84
	Perishable Food Items	4.46	136.92	139.11	131.46	-1.57	4.15	-0.07	0.20
2.	Alcoholic Bev.& Tobacco	0.85	145.10	145.03	128.03	0.05	13.33	0.00	0.12
3.	Clothing & Footwear	8.01	132.50	131.67	120.36	0.63	10.09	0.05	0.79
4.	Housing, Water, Electricity, Gas & Fuels	27.03	130.09	130.22	123.14	-0.10	5.64	-0.03	1.53
5.	Furnishing & Household Equipment Maintenance	4.09	129.35	128.80	120.09	0.43	7.71	0.02	0.31
6.	Health	2.31	140.28	139.92	129.42	0.26	8.39	0.01	0.20
7.	Transport	6.14	123.36	124.89	136.30	-1.23	-9.49	-0.07	-0.65
8.	Communication	2.35	108.22	108.22	105.98	0.00	2.11	0.00	0.04
9.	Recreation & Culture	1.73	118.29	118.12	113.29	0.14	4.41	0.00	0.07
10.	Education	4.88	144.98	144.98	142.32	0.00	1.87	0.00	0.11
11.	Restaurants & Hotels	7.41	130.52	129.80	121.23	0.55	7.66	0.04	0.56
12.	Miscellaneous	4.77	138.14	137.02	124.94	0.82	10.57	0.04	0.51

Main contributors to month-on-month and year-on-year percentage changes are given below and detail is given in Annexure A.

1. MONTH-ON-MONTH Top few commodities which varied from previous month are given below: -

Food Items

Increased: Eggs (21.71%), Tomatoes (13.09%), Wheat flour (11.92%), Wheat (10.83%), Condiments and Spices (5.44%), Fresh vegetables (4.05%), Potatoes (2%) and Chicken (1.54%)

Decreased: Onions (17.07%), Pulse gram (5.84%), Fresh fruits (4.36%), Besan (4.18%), Pulse masoor (3.57%), Gur (3.08%), Pulse mash(2.98%), Pulse moong (2.63%) and Gram whole (1.06%).

Non-food Items

Increased: Cotton cloth (1.76%)

Decreased: Motor fuel (7.29%), Liquefied Hydrocarbons (5.46%) and Construction input items (0.35%).

2. YEAR-ON-YEAR: Top few commodities which varied from previous year i.e. June 2019 are given below:-

Food Items

Increased: Potatoes(72.01%), Pulse moong (71.07%), Pulse mash(46.1%), Eggs (44.85%), Butter(37.15%), Pulse masoor(34.76%), Beans(30.73%), Condiments and Spices(29.84%), Vegetable ghee(24.79%), Wheat flour (24.45%), Wheat(22.13%), Cooking oil(20.19%), Chicken (18.55%), Besan(15.76%), Mustard oil(15.67%), Gur(15.11%) and Sugar(14.67%)

Decreased: Onions (35.62%) and Tomatoes (22.87%).

Non-food Items

Increased: Gas charges (54.84%), Woolen cloth (13.15%), Construction input items (12.25%) and Furniture and furnishing (10.45%)

Decreased: Motor fuel (28.03%), Electricity charges (3.54%) and Liquefied Hydrocarbons (3.45%).

III. Rural Consumer Price Index (RCPI)

The Rural Consumer Price Index of June 2020 is increased by 1.02% over May 2020 and increased by 10.03% over corresponding month of the last year i.e. June 2019.

Table 3: Consumer Price Index (Rural) by Group of Commodities and Services (Base 2015-16)

No	Group	Group Weight (%)	Indices			% Change June 2020 Over		Impact (In % points) June 2020 Over	
			June 2020	May 2020	June 2019	May 2020	June 2019	May 2020	June 2019
	General	100.00	132.36	131.03	120.29	1.02	10.03	1.02	10.03
1.	Food & Non-alcoholic Bev.	40.87	135.66	132.78	117.50	2.17	15.46	0.90	6.17
	Non-perishable Food Items	35.08	136.14	132.07	117.14	3.08	16.22	1.09	5.54
	Perishable Food Items	5.79	132.73	137.05	119.68	-3.15	10.90	-0.19	0.63
2.	Alcoholic Bev.& Tobacco	1.28	130.65	130.21	113.35	0.34	15.26	0.00	0.18
3.	Clothing & Footwear	9.48	139.64	138.30	124.43	0.97	12.22	0.10	1.20
4.	Housing, Water, Electricity, Gas & Fuels	18.49	124.75	125.12	118.90	-0.30	4.92	-0.05	0.90
5.	Furnishing & Household Equipment Maintenance	4.10	129.30	128.66	117.14	0.50	10.38	0.02	0.41
6.	Health	3.51	141.06	140.80	128.08	0.18	10.13	0.01	0.38
7.	Transport	5.56	122.26	123.25	138.09	-0.80	-11.46	-0.04	-0.73
8.	Communication	1.99	104.72	104.72	104.11	0.00	0.59	0.00	0.01
9.	Recreation & Culture	1.38	123.14	123.12	116.77	0.02	5.46	0.00	0.07
10.	Education	2.13	133.48	133.48	130.38	0.00	2.38	0.00	0.05
11.	Restaurants & Hotels	6.19	134.15	133.51	120.54	0.48	11.29	0.03	0.70
12.	Miscellaneous	5.02	138.54	137.35	122.34	0.87	13.24	0.05	0.68

Main contributors to month-on-month and year-on-year percentage changes are given below and detail is given in Annexure A.

- MONTH-ON-MONTH** Top few commodities which varied from previous month are given below: -

Food Items

Increased: Eggs(13.15%), Tomatoes(12.31%), Wheat Flour(10.43%), Wheat(9.61%), Potatoes(7.34%), Chicken(4.13%), Pulse Mash(3.07%), Gur(2.27%), Milk fresh(2.04%), and Rice(1.63%).

Decreased: Onions (25.4%), Fresh fruits (5.99%), Pulse Gram (3.57%), Besan (2.56%), Pulse Masoor (1.62%), Gram Whole (1.41%) and Fresh Vegetables (1.27%).

Non-food Items

Increased: Cotton Cloth(2.7%)

Decreased: Motor Fuels (7.62%), Liquefied Hydrocarbons (6.92%) and Construction Input Items (1.74%)

- YEAR-ON-YEAR:** Top few commodities which varied from previous year i.e. June 2019 are given below:-

Food Items

Increased: Potatoes(100.58%), Pulse Moong(79.34%), Condiments and Spices(59.1%), Pulse Mash(48.09%), Pulse Masoor(38.47%), Beans(34.43%), Eggs(27.96%), Vegetable ghee(26.95%), Gur(24.19%), Cooking oil(23.51%), Wheat Flour(23.21%), Wheat(20.7%), Pulse Gram(18.45%), Besan(16.58%) and Cigarettes(15.45%).

Decreased: Onions (36.28%) and Tomatoes (27.09%).

Non-food Items

Increased: Cotton Cloth(18.13%), Hosiery(17.31%), Furniture and Furnishing(12.85%), and Construction Wage Rates(11.47%).

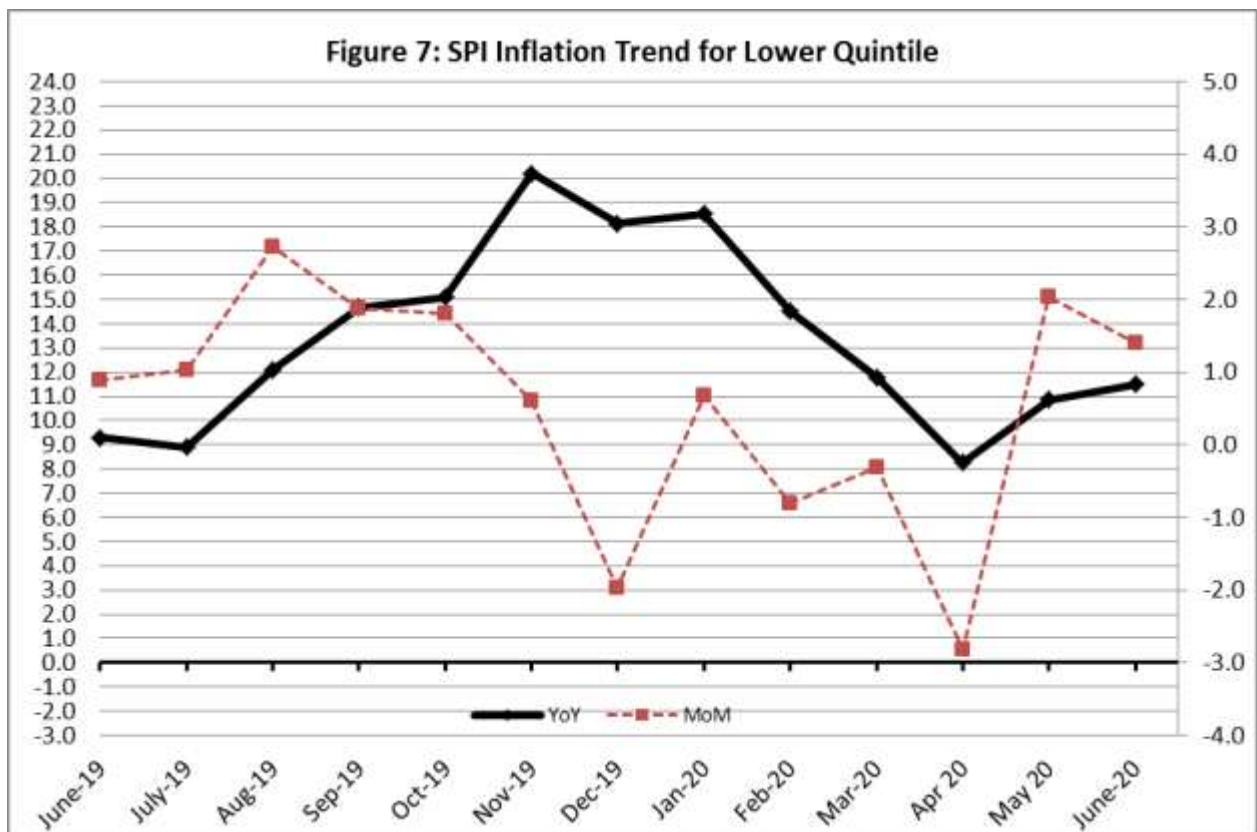
Decreased: Motor Fuels (30.07%), Liquefied Hydrocarbons (10.65%) and Electricity charges (3.54%).

IV. Sensitive Price Indicator

Quintile-wise percentage changes YoY and MoM are given below in Table 4. The series from June 2019 to June 2020 is also graphed below in Figure 7.

Table 4: Sensitive Price Indicator (Base 2015-16)					
Quintiles	Indices			% Change June 2020 Over	
	June 2020	May 2020	June 2019	May 2020	June 2019
1	135.55	133.72	121.56	1.37	11.51
2	129.94	128.32	117.19	1.26	10.88
3	131.84	130.44	115.95	1.07	13.70
4	128.40	127.31	114.19	0.86	12.44
5	128.82	128.66	119.88	0.12	7.46
Combined	128.46	127.76	117.50	0.55	9.33

Table 4.1 : Weekly Percentage Change of SPI During June-2020				
Quintiles	% Change with Previous week			
	04-06-2020	11-06-2020	18-06-2020	25-06-2020
Quintile 1	0.07	0.35	1.29	0.37
Combined	-0.42	0.05	1.02	0.15



V. Wholesale Price Index

The Wholesale Price Index for June, 2020 decreased by **0.32%** over May 2020. It increased by **0.93%** over the corresponding month of the last year. YoY and MoM movements, from June, 2019 to June, 2020 are also graphed below in Figure 8.

Table 5: Wholesale Price Index by Group of Commodities (Base 2015-16)

No.	Group	Group Weight (%)	Indices			% Change June 2020 Over		Impact (In % points) June 2020 Over	
			June 20	May 20	June 19	May 20	June 19	May 20	June 19
	General	100.00	135.80	136.23	134.55	-0.32	0.93	-0.32	0.93
1.	Agriculture, Forestry & Fishery Products	25.77	137.92	141.78	130.72	-2.72	5.51	-0.73	1.38
2.	Ores & Minerals, Electricity, Gas & Water	12.01	160.96	161.34	133.58	-0.24	20.50	-0.03	2.44
3.	Food Products, Beverages & Tobacco, Textiles, Apparel & Leather Products	31.11	136.94	135.41	126.78	1.13	8.01	0.35	2.35
	i. Food Products, Bev. & Tobacco	20.07	134.55	132.30	119.97	1.70	12.15	0.33	2.18
	ii. Textiles and Apparel	10.33	142.82	142.60	141.17	0.15	1.17	0.02	0.13
	iii. Leather Products	0.71	118.88	118.88	110.18	0.00	7.90	0.00	0.05
4.	Other Transportable Goods except Metal Products, Machinery & Equipment	22.40	118.26	117.64	156.66	0.53	-24.51	0.10	-6.39
5.	Metal Products, Machinery & Equipment	8.72	135.83	135.94	118.10	-0.08	15.01	-0.01	1.15

Main contributors to month-on-month and year-on-year percentage changes are given below and detail is given in Annexure C.

1. MONTH-ON-MONTH Top few commodities which varied from previous month are given below: -

Increased: Spices(48.37%), Eggs(25.61%), Furnace Oil(21.22%), Vegetables(19.09%), Wheat (14.68%), Wheat Flour(11.59%), Plastic Products(6.8%), Potatoes(4.8%), Unmanufactured Tobacco(3.89%), Poultry(2.98%) and Rice(1.16%).

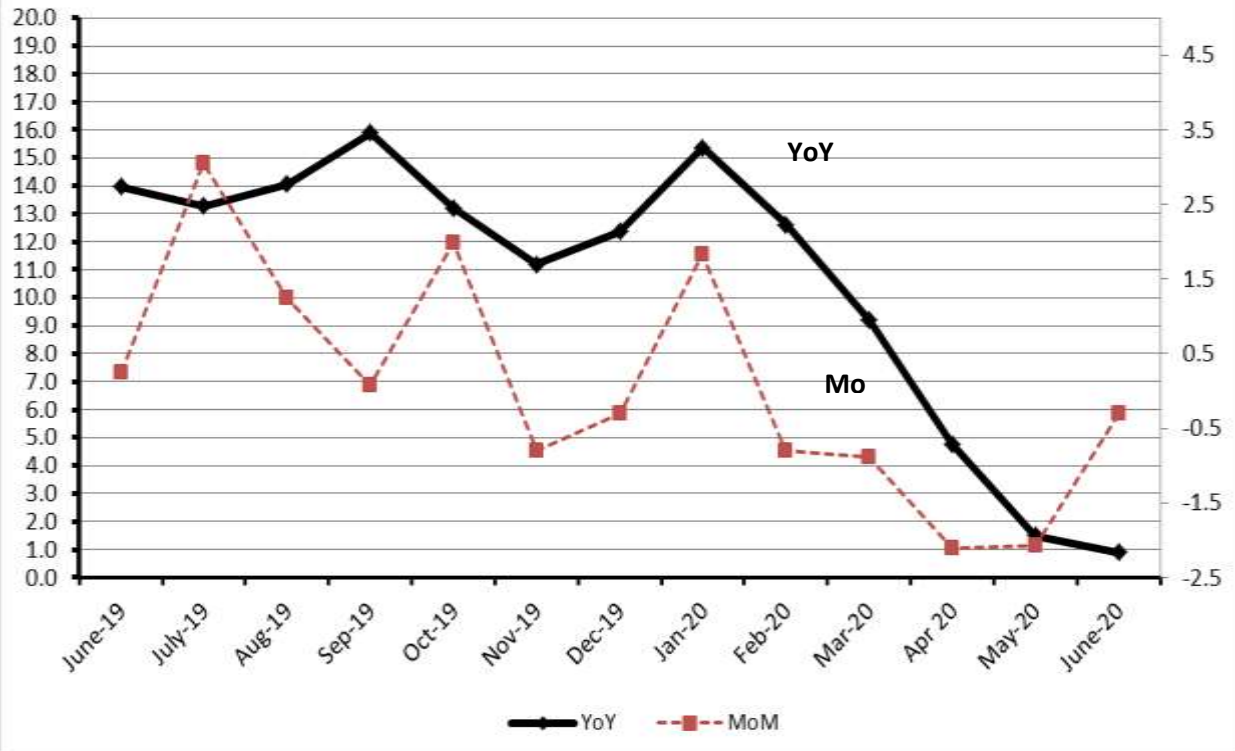
Decreased: Kerosene Oil (25.04%), Fiber Crops (15.52%), Diesel Oil (10.48%), Motor Spirit (9.06%), Fresh Fruits (7.77%), Maize (4.62%) and Pulses (2.47%).

2. YEAR-ON-YEAR Top few commodities which varied from previous year i.e. June, 2019 are given below: -

Increased: Potatoes(95.57%), Spices(65.03%), Eggs(47.77%), Dyeing Material(34.65%), Natural Gas Liquefied (28.97%), Unmanufactured Tobacco(25.39%), Wheat (23.88%), Cotton Seeds(23.25%), Wheat Flour(22.87%), Vegetable Ghee(22.03%), Poultry(20.93%), Pulses(20.23%), and Sugar Refined(14.73%).

Decreased: Kerosene Oil (63.88%), Diesel Oil (48.72%), Furnace Oil (38.51%), Motor Spirit (35.15%) and Bajra (15.22%).

Figure 8: WPI Inflation



Annexure A:CPI (Urban) Index Numbers by Commodity Groups & Commodities (2015-16=100)

Item and Specification	Weight	Index Numbers			% Change in Jun 2020 over	
		Jun 20	May 20	Jun 19	May 2020	Jun 2019
General	100.0000	131.89	130.99	122.52	+ 0.69	+ 7.65
Food and non-alcoholic Beverages	30.4215	134.23	131.55	117.97	+ 2.04	+ 13.78
01 Wheat	0.6120	129.67	117.00	106.17	+ 10.83	+ 22.13
02 Wheat flour	3.0075	130.29	116.41	104.69	+ 11.92	+ 24.45
03 Wheat products	0.0936	127.34	124.64	109.32	+ 2.17	+ 16.48
04 Besan	0.0830	122.51	127.86	105.83	- 4.18	+ 15.76
05 Rice	1.1804	134.64	133.45	125.21	+ 0.89	+ 7.53
06 Bakery and confectionary	0.4770	126.40	126.34	112.27	+ 0.05	+ 12.59
07 Nimco	0.1224	125.99	125.49	111.47	+ 0.40	+ 13.03
08 Meat	2.0411	147.76	146.83	134.08	+ 0.63	+ 10.20
09 Chicken	1.3631	137.92	135.83	116.34	+ 1.54	+ 18.55
10 Fish	0.3855	114.26	114.13	118.37	+ 0.11	- 3.47
11 Milk fresh	7.1070	123.69	121.83	112.78	+ 1.53	+ 9.67
12 Milk products	0.6407	125.86	124.94	115.81	+ 0.74	+ 8.68
13 Milk powder	0.3106	130.20	129.91	114.22	+ 0.22	+ 13.99
14 Eggs	0.5083	132.70	109.03	91.61	+ 21.71	+ 44.85
15 Butter	0.0932	170.23	170.16	124.12	+ 0.04	+ 37.15
16 Mustard oil	0.0120	125.68	125.68	108.65	+ 0.00	+ 15.67
17 Cooking oil	1.1016	144.82	144.78	120.49	+ 0.03	+ 20.19
18 Vegetable ghee	1.0324	149.51	149.49	119.81	+ 0.01	+ 24.79
19 Dry fruits	0.3299	130.03	129.72	117.04	+ 0.24	+ 11.10
20 Fresh fruits	1.4363	161.59	168.95	154.88	- 4.36	+ 4.33
21 Pulse masoor	0.1624	110.33	114.42	81.87	- 3.57	+ 34.76
22 Pulse moong	0.1697	171.75	176.38	100.40	- 2.63	+ <u>71.07</u>
23 Pulse mash	0.1152	104.68	107.89	71.65	- 2.98	+ 46.10
24 Pulse gram	0.1660	118.49	125.84	105.00	- 5.84	+ 12.85
25 Gram whohe	0.0912	128.54	129.92	118.26	- 1.06	+ 8.69
26 Beans	0.0408	144.13	144.87	110.25	- 0.51	+ 30.73
27 Potatoes	0.4496	230.80	226.28	134.18	+ 2.00	+ <u>72.01</u>
28 Onions	0.5928	83.83	101.08	130.22	- 17.07	- 35.62
29 Tomatoes	0.3459	70.92	62.71	91.95	+ 13.09	- 22.87
30 Fresh vegetables	1.5306	115.88	111.37	114.31	+ 4.05	+ 1.37
31 Sugar	1.1130	130.37	131.06	113.69	- 0.53	+ 14.67
32 Gur	0.0379	136.49	140.83	118.57	- 3.08	+ 15.11
33 Honey	0.1017	119.37	118.89	111.23	+ 0.40	+ 7.32
34 Sweetmeat	0.3535	141.24	139.49	127.70	+ 1.25	+ 10.60
35 Ice cream	0.1044	126.91	126.61	114.56	+ 0.24	+ 10.78
36 Condiments and Spices	1.3340	175.46	166.40	135.14	+ 5.44	+ 29.84
37 Dessert preparation	0.0419	125.08	124.02	112.27	+ 0.85	+ 11.41
38 Tea	0.8427	140.74	140.74	128.50	+ 0.00	+ 9.53
39 Beverages	0.8906	126.76	126.47	113.08	+ 0.23	+ 12.10
Alcoholic Beverages, Tobacco	0.8540	145.10	145.03	128.03	+ 0.05	+ 13.33
40 Cigarettes	0.7167	135.18	135.09	117.92	+ 0.07	+ 14.64
41 Pan prepared	0.1373	196.90	196.90	180.81	+ 0.00	+ 8.90
Clothing and footwear	8.0096	132.50	131.67	120.36	+ 0.63	+ 10.09
42 Cotton cloth	2.2227	136.39	134.03	122.23	+ 1.76	+ 11.58
43 Woolen cloth	0.8361	127.10	126.22	112.33	+ 0.70	+ 13.15
44 Readymade garments	1.3196	130.22	130.20	122.48	+ 0.02	+ 6.32
45 Woolen readymade garments	0.4307	126.88	126.88	115.34	+ 0.00	+ 10.01
46 Tailoring	1.0741	140.63	140.36	128.09	+ 0.19	+ 9.79
47 Hosiry	0.4070	128.14	127.61	122.75	+ 0.42	+ 4.39
48 Dopatta	0.1713	124.49	124.09	111.28	+ 0.32	+ 11.87
49 Cleaning and laundring	0.0665	131.01	130.66	122.74	+ 0.27	+ 6.74
50 Footware	1.4816	129.66	129.66	116.34	+ 0.00	+ 11.45
Housing, water, Elec., Gas an	27.0332	130.09	130.22	123.14	- 0.10	+ 5.64
51 House rent	19.2558	130.02	130.02	124.78	+ 0.00	+ 4.20
52 Construcion input items	0.3765	143.08	143.58	127.46	- 0.35	+ 12.25
53 Construction wage rates	0.2025	149.20	148.80	138.90	+ 0.27	+ 7.42
54 Water supply	0.5269	143.78	143.78	120.30	+ 0.00	+ 19.52
55 Garbage collection	0.1064	159.37	156.98	145.38	+ 1.52	+ 9.62
56 Electricity charges	4.5562	108.04	108.04	112.00	+ 0.00	- 3.54
57 Gas charges	1.0807	216.94	216.94	140.11	+ 0.00	+ <u>54.84</u>
58 Liquefied Hydrocarbons	0.5064	121.30	128.31	125.63	- 5.46	- 3.45
59 Solid Fuel	0.4218	114.44	114.43	108.47	+ 0.01	+ 5.50

Annexure A:CPI (Urban) Index Numbers by Commodity Groups & Commodities (2015-16=100)

Item and Specification	Weight	Index Numbers			% Change in Jun 2020 over			
		Jun 20	May 20	Jun 19	May 2020	Jun 2019		
<i>Furnishing and household equi</i>	4.0937	129.35	128.80	120.09	+	0.43	+	7.71
60 Furniture and furnishing	0.4750	130.08	129.15	117.77	+	0.72	+	10.45
61 Carpets	0.0308	111.18	111.16	105.58	+	0.02	+	5.30
62 Household textiles	0.3420	125.85	125.82	122.03	+	0.02	+	3.13
63 Household equipment	1.0032	129.09	128.00	119.34	+	0.85	+	8.17
64 Plastic products	0.0536	116.93	116.84	113.36	+	0.08	+	3.15
65 Major tools & equipment	0.0084	121.25	120.39	110.65	+	0.71	+	9.58
66 Washing soap/detergents/match	1.4112	130.05	129.65	119.49	+	0.31	+	8.84
67 Household servant	0.7695	131.21	131.02	123.92	+	0.15	+	5.88
<i>Health</i>	2.3098	140.28	139.92	129.42	+	0.26	+	8.39
68 Drugs and medicines	1.0735	139.60	139.26	125.90	+	0.24	+	10.88
69 Therapeutic Appliances and Eq	0.0054	111.06	107.20	106.35	+	3.60	+	4.43
70 Doctor (MBBS) clinic fee	0.4044	169.79	169.68	149.35	+	0.06	+	13.69
71 Dental services	0.0156	118.61	118.61	111.66	+	0.00	+	6.22
72 Medical tests	0.2367	126.01	124.35	119.70	+	1.33	+	5.27
73 Hospitals services	0.5742	127.51	127.49	126.68	+	0.02	+	0.66
<i>Transport</i>	6.1368	123.36	124.89	136.30	-	1.23	-	9.49
74 Motor vehicles	0.8097	147.46	146.86	129.34	+	0.41	+	14.01
75 Motor vehicle accessories	0.1941	130.68	130.09	116.73	+	0.45	+	11.95
76 Motor fuel	2.9088	111.18	119.92	154.48	-	7.29	-	28.03
77 Mechanical services	0.4290	130.87	130.66	119.39	+	0.16	+	9.62
78 Motor vehicle tax	0.0482	126.72	126.72	124.01	+	0.00	+	2.19
79 Transport services	1.7470	129.73	120.93	115.93	+	7.28	+	11.90
<i>Communication</i>	2.3536	108.22	108.22	105.98	+	0.00	+	2.11
80 Postal services	0.0190	147.05	147.05	147.05	+	0.00	+	0.00
81 Communication apparatus	0.4524	118.74	118.74	109.52	+	0.00	+	8.42
82 Communication Services	1.8822	105.30	105.30	104.72	+	0.00	+	0.55
<i>Recreation and culture</i>	1.7301	118.29	118.12	113.29	+	0.14	+	4.41
83 Recreation and culture	0.6478	110.70	110.31	106.68	+	0.35	+	3.77
84 Text books	0.6655	117.25	117.25	111.84	+	0.00	+	4.84
85 Newspapers	0.0716	151.55	151.55	151.55	+	0.00	+	0.00
86 stationery	0.3452	127.66	127.51	120.57	+	0.12	+	5.88
<i>Education</i>	4.8807	144.98	144.98	142.32	+	0.00	+	1.87
87 Education	4.8807	144.98	144.98	142.32	+	0.00	+	1.87
<i>Restaurants and hotels</i>	7.4050	130.52	129.80	121.23	+	0.55	+	7.66
88 Readymade food	5.5235	130.02	129.07	120.42	+	0.74	+	7.97
89 Marriage Hall Charges	1.7514	133.41	133.41	124.46	+	0.00	+	7.19
90 Accommodation Services	0.1301	112.40	112.40	111.88	+	0.00	+	0.46
<i>Misc. goods and services</i>	4.7720	138.14	137.02	124.94	+	0.82	+	10.57
91 Personal Grooming Services	0.8001	127.59	126.43	121.08	+	0.92	+	5.38
92 Electrical Appliances for Per	0.0465	116.88	116.78	114.64	+	0.09	+	1.95
93 Appliances/Articles/Products	2.9807	128.06	127.73	118.85	+	0.26	+	7.75
94 Personal Effects n.e.c.	0.9447	179.94	176.28	147.92	+	2.08	+	21.65

Annexure B:CPI (Rural) Index Numbers by Commodity Groups & Commodities (2015-16=100)

Item and Specification	Weight	Index Numbers			% Change in Jun 2020 over			
		Jun 20	May 20 19	Jun	May 2020	Jun 2019		
General	100.0000	132.36	131.03	120.29	+	1.02	+	10.03
Food and non-alcoholic Beverage	40.8668	135.66	132.78	117.50	+	2.17	+	15.46
01 Wheat	3.4736	126.86	115.74	105.10	+	9.61	+	20.70
02 Wheat Flour	3.4297	130.39	118.07	105.83	+	10.43	+	23.21
03 Wheat Products	0.1068	126.01	125.37	110.94	+	0.51	+	13.58
04 Besan	0.0728	127.27	130.61	109.17	-	2.56	+	16.58
05 Rice	1.5501	168.97	166.26	148.90	+	1.63	+	13.48
06 Bakery and Confectionary	0.3702	127.25	127.22	115.13	+	0.02	+	10.53
07 Nimco	0.0774	118.30	118.14	109.27	+	0.14	+	8.26
08 Meat	1.7146	147.57	146.19	135.23	+	0.94	+	9.13
09 Chicken	1.4641	145.51	139.74	127.94	+	4.13	+	13.73
10 Fish	0.2640	121.39	124.58	124.65	-	2.56	-	2.62
11 Milk fresh	10.3803	124.62	122.13	116.21	+	2.04	+	7.24
12 Milk products	0.9624	124.21	123.49	118.41	+	0.58	+	4.90
13 Milk powder	0.1062	124.19	123.86	106.19	+	0.27	+	16.95
14 Eggs	0.5665	124.33	109.88	97.16	+	13.15	+	27.96
15 Butter	0.3333	130.25	127.66	120.35	+	2.03	+	8.23
16 Mustard oil	0.0136	129.43	128.20	113.98	+	0.96	+	13.56
17 Cooking oil	0.6011	150.70	150.99	122.01	-	0.19	+	23.51
18 Vegetable ghee	2.3764	158.32	159.38	124.71	-	0.67	+	26.95
19 Dry fruits	0.2496	140.73	138.56	124.83	+	1.57	+	12.74
20 Fresh fruits	1.4505	166.49	177.09	158.23	-	5.99	+	5.22
21 Pulse Masoor	0.2076	115.79	117.70	83.62	-	1.62	+	38.47
22 Pulse Moong	0.2510	190.55	190.51	106.25	+	0.02	+	79.34
23 Pulse Mash	0.1465	108.83	105.59	73.49	+	3.07	+	48.09
24 Pulse Gram	0.2751	122.97	127.52	103.82	-	3.57	+	18.45
25 Gram Whole	0.1116	122.76	124.51	114.95	-	1.41	+	6.79
26 Beans	0.0896	163.12	162.13	121.34	+	0.61	+	34.43
27 Potatoes	0.7437	254.02	236.64	126.64	+	7.34	+	100.5
28 Onions	0.8965	73.20	98.12	114.88	-	25.40	-	36.28
29 Tomatoes	0.5069	59.01	52.54	80.93	+	12.31	-	27.09
30 Fresh Vegetables	2.0947	105.34	106.69	100.34	-	1.27	+	4.98
31 Sugar	2.0296	131.09	131.25	115.02	-	0.12	+	13.97
32 Gur	0.1522	140.39	137.28	113.04	+	2.27	+	24.19
33 Honey	0.0296	122.76	122.76	118.42	+	0.00	+	3.66
34 Sweetmeat	0.3967	127.49	126.60	117.64	+	0.70	+	8.37
35 Ice Cream	0.0568	126.78	126.39	116.79	+	0.31	+	8.55
36 Condiments and Spices	1.4919	189.54	180.00	119.13	+	5.30	+	59.10
37 Dessert Preparation	0.0133	120.27	118.49	109.72	+	1.50	+	9.62
38 Tea	1.2566	137.87	137.87	125.80	+	0.00	+	9.59
39 Beverages	0.5537	126.88	126.34	110.52	+	0.43	+	14.80
Alcoholic Beverages, Tobacco	1.2786	130.65	130.21	113.35	+	0.34	+	15.26
40 Cigarettes	1.2364	129.74	129.28	112.38	+	0.36	+	15.45
41 Pan Prepared	0.0422	157.44	157.44	141.78	+	0.00	+	11.05
Clothing and footwear	9.4826	139.64	138.30	124.43	+	0.97	+	12.22
42 Cotton Cloth	2.8381	153.55	149.52	129.98	+	2.70	+	18.13
43 Woolen Cloth	1.0959	127.26	126.35	117.88	+	0.72	+	7.96
44 Readymade Garments	1.1345	133.73	133.73	123.23	+	0.00	+	8.52
45 Woolen Readymade Garments	0.5401	130.27	130.27	119.13	+	0.00	+	9.35
46 Tailoring	1.2999	137.50	137.50	128.39	+	0.00	+	7.10
47 Hosiry	0.4322	158.14	157.62	134.81	+	0.33	+	17.31
48 Dopatta	0.2078	132.13	131.99	117.61	+	0.11	+	12.35
49 Cleaning and Laundering	0.0176	131.39	130.42	116.25	+	0.74	+	13.02
50 Footware	1.9165	130.44	130.41	117.96	+	0.02	+	10.58
Housing, water, Elec., Gas an	18.4853	124.75	125.12	118.90	-	0.30	+	4.92
51 House Rent	8.6110	130.00	130.00	123.64	+	0.00	+	5.14
52 Construction Input Items	0.6306	119.11	121.22	108.96	-	1.74	+	9.32
53 Construction Wage Rates	0.2526	150.13	149.47	134.68	+	0.44	+	11.47
54 Water Supply	0.0645	158.09	158.09	130.45	+	0.00	+	21.19
55 Garbage Collection	0.0080	138.15	138.15	133.25	+	0.00	+	3.68
56 Electricity Charges	3.4431	108.04	108.04	112.00	+	0.00	-	3.54
57 Liquified Hydrocarbons	0.9994	108.50	116.57	121.43	-	6.92	-	10.65
58 Solid Fuel	4.4761	130.01	129.46	114.86	+	0.42	+	13.19

Annexure B:CPI (Rural) Index Numbers by Commodity Groups & Commodities (2015-16=100)

Item and Specification	Weight	Index Numbers			% Change in Jun 2020 over			
		Jun 20	May 20 19	Jun	May 2020	Jun 2019		
Furnishing and household equipment	4.1031	129.30	128.66	117.14	+	0.50	+	10.38
59 Furniture and Furnishing	0.5786	132.34	131.41	117.27	+	0.71	+	12.85
60 Household Textiles	0.4382	127.72	127.57	117.24	+	0.12	+	8.94
61 Household Equipment	1.2774	134.26	133.06	124.23	+	0.90	+	8.07
62 Plastic Products	0.0776	138.83	138.02	126.36	+	0.59	+	9.87
63 Major Tools and equipment	0.0324	116.01	115.93	111.79	+	0.07	+	3.77
64 Washing Soaps, Detergents and	1.6989	124.76	124.52	111.43	+	0.19	+	11.96
Health	3.5141	141.06	140.80	128.08	+	0.18	+	10.13
65 Drugs and Medicines	1.5792	142.48	142.02	128.78	+	0.32	+	10.64
66 Doctor Clinic Fee	0.5128	161.36	161.02	137.27	+	0.21	+	17.55
67 Dental Services	0.0181	122.97	122.97	110.41	+	0.00	+	11.38
68 Medical Tests	0.3967	143.22	143.22	128.67	+	0.00	+	11.31
69 Hospitals Services	1.0073	127.98	127.98	122.38	+	0.00	+	4.58
Transport	5.5580	122.26	123.25	138.09	-	0.80	-	11.46
70 Motor Vehicles	0.7305	127.15	127.10	118.49	+	0.04	+	7.31
71 Motor Vehicles Accessories	0.1572	135.58	135.49	121.62	+	0.07	+	11.48
72 Motor Fuels	2.4932	107.97	116.87	154.39	-	7.62	-	30.07
73 Mechanical Services	0.3645	153.45	153.45	145.95	+	0.00	+	5.14
74 Motor Vehicle Tax	0.0174	127.98	127.98	127.98	+	0.00	+	0.00
75 Transport Services	1.7952	132.56	123.29	123.37	+	7.52	+	7.45
Communication	1.9940	104.72	104.72	104.11	+	0.00	+	0.59
76 Postal Services	0.0070	149.43	149.43	149.43	+	0.00	+	0.00
77 Communication Apparatus	0.3362	118.95	118.95	116.14	+	0.00	+	2.42
78 Communication Services	1.6508	101.63	101.63	101.47	+	0.00	+	0.16
Recreation and culture	1.3764	123.14	123.12	116.77	+	0.02	+	5.46
79 Recreation and Culture	0.4763	128.43	128.38	117.64	+	0.04	+	9.17
80 Text Books	0.5047	110.23	110.23	106.80	+	0.00	+	3.21
81 Newspapers	0.0230	161.68	161.68	161.68	+	0.00	+	0.00
82 Stationery	0.3724	131.49	131.49	126.38	+	0.00	+	4.04
Education	2.1342	133.48	133.48	130.38	+	0.00	+	2.38
83 Education	2.1342	133.48	133.48	130.38	+	0.00	+	2.38
Restaurants and hotels	6.1895	134.15	133.51	120.54	+	0.48	+	11.29
84 Readymade Food	3.8001	139.60	138.56	124.22	+	0.75	+	12.38
85 Marriage Hall Charges	2.2525	126.93	126.93	115.47	+	0.00	+	9.92
86 Accommodation Services	0.1369	101.59	101.59	101.59	+	0.00	+	0.00
Misc. goods and services	5.0174	138.54	137.35	122.34	+	0.87	+	13.24
87 Personal Grooming Services	1.5363	138.27	137.84	124.36	+	0.31	+	11.19
88 Appliances/Articles/Products	2.2746	121.52	120.95	112.86	+	0.47	+	7.67
89 Personal Effects n.e.c.	1.2065	170.98	167.64	137.66	+	1.99	+	24.20

Annexure C: Wholesale Price Indices by Major Groups & Commodities

(2015-16=100)

Item and Specification	Weight	Index Numbers			% Change in Jun 2020 over		
		Jun 20	May 20	Jun 19	May 2020	Jun 2019	
General	100.0000	135.80	136.23	134.55	-	0.32	+ 0.93
Agriculture Forestry & Fisher	25.7674	137.92	141.78	130.72	-	2.72	+ 5.51
001 Wheat	0.6297	129.96	113.32	104.91	+	14.68	+ 23.88
002 Maize	0.6764	144.29	151.28	141.10	-	4.62	+ 2.26
003 Rice	2.4413	152.64	150.89	138.66	+	1.16	+ 10.08
004 Sorghum / Jowar	0.0214	198.03	198.09	164.60	-	0.03	+ 20.31
005 Millet / Bajra	0.0374	121.58	122.11	143.41	-	0.43	- 15.22
006 Vegetables	1.2441	120.64	101.30	138.33	+	19.09	- 12.79
007 Fresh Fruits	1.5144	155.31	168.40	156.95	-	7.77	- 1.04
008 Dry Fruits	0.2478	130.41	129.04	121.83	+	1.06	+ 7.04
009 Cotton Seeds	1.1511	134.28	132.08	108.95	+	1.67	+ 23.25
010 Other Oil Seeds	0.0722	135.62	134.26	120.02	+	1.01	+ 13.00
011 Edible Roots / Potatoes	0.2540	285.65	272.57	146.06	+	4.80	+ <u>95.57</u>
012 Stimulant & Spice Crops	0.1634	275.99	274.38	155.38	+	0.59	+ <u>77.62</u>
013 Pulses	0.4901	126.13	129.32	104.91	-	2.47	+ 20.23
014 Sugar Crops	1.0725	122.32	121.83	112.02	+	0.40	+ 9.19
015 Fibre Crops	5.3169	145.46	172.18	166.89	-	15.52	- 12.84
016 Unmanufactured Tobacco	0.0742	189.62	182.52	151.22	+	3.89	+ 25.39
017 Poultry	0.5633	138.75	134.74	114.74	+	2.98	+ 20.93
018 Raw Milk from Bovine Animals	7.0279	124.74	123.78	108.48	+	0.78	+ 14.99
019 Eggs	0.5034	130.17	103.63	88.09	+	25.61	+ 47.77
020 Raw Animal Materials / Wool	0.0351	105.33	105.33	106.59	+	0.00	- 1.18
021 Hides, Skins & Fur Skins, Raw	0.4834	38.90	38.82	45.27	+	0.21	- 14.07
022 Fuel Wood in Logs	0.0179	115.92	115.92	107.21	+	0.00	+ 8.12
023 Fish Live Fresh or Chilled	1.7295	155.00	155.00	146.72	+	0.00	+ 5.64
Ores/Minerals, Elec., Gas & W	12.0069	160.96	161.34	133.58	-	0.24	+ 20.50
024 Coal not Agglomerated	0.7508	75.79	75.79	82.17	+	0.00	- 7.76
025 Natural Gas Liquified	5.7065	195.39	196.18	151.50	-	0.40	+ 28.97
026 Salt & Pure Sodium Chloride	0.0584	161.99	161.99	150.56	+	0.00	+ 7.59
027 Electrical Energy	5.4912	136.82	136.82	121.80	+	0.00	+ 12.33
Food, Beverages, Tobacco, Textil	31.1122	136.94	135.41	126.78	+	1.13	+ 8.01
Food Products, Beverages &	20.0718	134.55	132.30	119.97	+	1.70	+ 12.15
028 Meat of Animals	3.4559	149.89	149.35	132.82	+	0.36	+ 12.85
029 Vegetables & Fruit Juice	0.0058	111.80	112.76	123.74	-	0.85	- 9.65
030 Dried Fruits & Nuts	0.1733	159.45	157.54	147.74	+	1.21	+ 7.93
031 Fruit Juices	0.3880	123.07	123.23	112.36	-	0.13	+ 9.53
032 Vegetable Oils Refined	1.9242	123.92	123.22	114.50	+	0.57	+ 8.23
033 Vegetable Ghee	1.5632	146.37	147.75	119.95	-	0.93	+ 22.03
034 Oil Cakes	0.9611	140.91	140.16	125.32	+	0.54	+ 12.44
035 Processed Liquid Milk	4.4437	134.52	134.03	125.38	+	0.37	+ 7.29
036 Milk & Cream in Solid Form	0.0316	128.30	124.83	111.31	+	2.78	+ 15.26
037 Ice Cream	0.0047	117.05	117.05	106.99	+	0.00	+ 9.40
038 Dairy Products N.E.C	0.0117	133.91	131.25	125.00	+	2.03	+ 7.13
039 Wheat Flour	2.3034	130.82	117.23	106.47	+	11.59	+ 22.87
040 Other Cereal Flour	0.0604	120.30	123.82	108.08	-	2.84	+ 11.31
041 Sugar Refined	1.7975	130.15	130.79	113.44	-	0.49	+ 14.73
042 Chocolate	0.0139	81.57	81.57	66.51	+	0.00	+ 22.64
043 Sugar Confectionary	0.0738	115.50	115.50	111.69	+	0.00	+ 3.41
044 Coffee & Tea	0.7303	127.76	127.71	118.30	+	0.04	+ 8.00
045 Spices	0.1449	230.86	155.60	139.89	+	48.37	+ <u>65.03</u>
046 Other Food Products	0.0336	112.54	112.35	109.66	+	0.17	+ 2.63
047 Mineral Water	0.0207	122.92	123.64	116.63	-	0.58	+ 5.39
048 Beverages	0.6303	125.81	125.81	119.07	+	0.00	+ 5.66
049 Tobacco Products	1.2998	104.23	104.23	104.23	+	0.00	+ 0.00
Textiles & Apparels	10.3289	142.82	142.60	141.17	+	0.15	+ 1.17
050 Cotton Yarn	5.2491	164.84	164.84	166.59	+	0.00	- 1.05
051 Nylon Yarn	0.1719	95.24	95.24	95.24	+	0.00	+ 0.00
052 Blended Yarn	0.1689	120.22	120.22	119.83	+	0.00	+ 0.33
053 Woven Fabrics	0.0128	135.54	135.54	121.08	+	0.00	+ 11.94
054 Cotton Fabrics	0.6343	118.55	118.41	107.69	+	0.12	+ 10.08
055 Other Fabrics	1.1016	113.21	112.30	111.22	+	0.81	+ 1.79
056 Silk & Reyon Fabrics	0.7350	119.19	117.76	112.77	+	1.21	+ 5.69
057 Towels	0.1235	117.41	117.41	110.24	+	0.00	+ 6.50
058 Blankets	0.0029	96.44	96.44	95.81	+	0.00	+ 0.66
059 Bed Sheets	0.0913	112.64	112.64	107.31	+	0.00	+ 4.97

Annexure C: Wholesale Price Indices by Major Groups & Commodities

(2015-16=100)

Item and Specification	Weight	Index Numbers			% Change in Jun 2020 over		
		Jun 20	May 20	Jun 19	May 2020	Jun 2019	
060 Quilts	0.0019	109.35	109.35	110.22	+	0.00	- 0.79
061 Woolen Carpets	0.0383	137.01	137.01	125.43	+	0.00	+ 9.23
062 Synthetic Carpets	0.0566	115.72	115.72	104.50	+	0.00	+ 10.74
063 Hosiery Products	0.8832	122.11	121.90	121.45	+	0.17	+ 0.54
064 Readymade Garments	1.0576	131.52	131.52	122.85	+	0.00	+ 7.06
Leather Products	0.7115	118.88	118.88	110.18	+	0.00	+ 7.90
065 Leather Without Hair	0.2973	108.00	108.00	105.65	+	0.00	+ 2.22
066 Other Leather N.E.C	0.2567	111.77	111.77	106.90	+	0.00	+ 4.56
067 Footwear	0.1575	151.00	151.00	124.07	+	0.00	+ 21.71
Other Transportable Goods	22.3979	118.26	117.64	156.66	+	0.53	- 24.51
068 Timber	0.0165	111.96	111.96	111.25	+	0.00	+ 0.64
069 Printing Paper	0.4279	130.70	130.70	109.33	+	0.00	+ 19.55
070 Hard Board	0.1579	146.50	146.50	146.50	+	0.00	+ 0.00
071 Motor Spirit	1.6268	103.34	113.64	159.36	-	9.06	- 35.15
072 Diesel Oil	5.4849	90.13	100.68	175.76	-	10.48	- 48.72
073 Kerosene Oil	0.2151	69.74	93.04	193.10	-	25.04	- <u>63.88</u>
074 Furnace Oil	3.2664	161.29	133.06	262.29	+	21.22	- 38.51
075 Mobil Oil	0.7114	122.25	122.31	118.74	-	0.05	+ 2.96
076 Chemicals	1.7720	129.81	129.62	121.26	+	0.15	+ 7.05
077 Dyeing Material	0.1539	146.16	146.16	108.55	+	0.00	+ 34.65
078 Fertilizers	2.8657	94.21	95.03	101.48	-	0.86	- 7.16
079 Pesticides	0.2763	110.91	110.91	107.56	+	0.00	+ 3.11
080 Insecticides	0.1276	111.49	111.49	112.89	+	0.00	- 1.24
081 Paints & Varnishes	0.1916	124.38	124.38	119.85	+	0.00	+ 3.78
082 Medicines	1.1428	145.57	145.57	122.52	+	0.00	+ 18.81
083 Soaps & Detergents	0.8168	111.69	111.66	120.86	+	0.03	- 7.59
084 Auto Tires	0.2703	121.56	121.56	116.75	+	0.00	+ 4.12
085 Plastic Products	0.4550	115.52	108.16	106.06	+	6.80	+ 8.92
086 Glass sheets	0.2089	149.29	145.21	140.04	+	2.81	+ 6.61
087 Other Glass Articles	0.1635	132.52	132.52	121.45	+	0.00	+ 9.11
088 Ceramics & Sanitary Fixture	0.0244	123.86	123.86	116.84	+	0.00	+ 6.01
089 Bricks, Blocks & Tiles	0.1566	118.77	120.62	107.23	-	1.53	+ 10.76
090 Cement	1.8145	114.99	115.31	108.73	-	0.28	+ 5.76
091 Bed Foam	0.0006	145.73	145.73	115.10	+	0.00	+ 26.61
092 Matches	0.0505	1171.7	1170.1	1127.3	+	0.14	+ 3.94
Metal Product, Machinery & Eq	8.7156	135.83	135.94	118.10	-	0.08	+ 15.01
093 Steel Bar & Sheets	1.4615	163.73	165.05	142.49	-	0.80	+ 14.91
094 Pipe Fittings	0.0780	141.32	141.32	121.94	+	0.00	+ 15.89
095 Steel Products	0.3879	133.35	133.35	118.79	+	0.00	+ 12.26
096 Engines & Motors	0.0046	107.29	107.29	107.29	+	0.00	+ 0.00
097 Vacuum Pumps	0.0155	107.56	107.56	107.56	+	0.00	+ 0.00
098 Air Conditioners	0.0049	112.46	112.46	108.94	+	0.00	+ 3.23
099 Cultivators	0.0551	103.75	103.75	87.11	+	0.00	+ 19.10
100 Chuff Cutter	0.1293	110.00	107.14	102.86	+	2.67	+ 6.94
101 Tractors	0.0028	121.30	121.30	109.22	+	0.00	+ 11.06
102 Lathe Machines	0.0525	203.64	203.64	144.32	+	0.00	+ 41.10
103 Concrete Mixture	0.0107	100.00	100.00	100.00	+	0.00	+ 0.00
104 Fridge, WashM, SewM, Fans, Iron	1.1645	148.98	148.98	128.19	+	0.00	+ 16.22
105 Electric Wires	0.0912	125.73	125.73	118.08	+	0.00	+ 6.48
106 Lighting equipment	1.4431	116.71	116.71	107.23	+	0.00	+ 8.84
107 Radio & Television	0.1843	100.59	100.59	96.80	+	0.00	+ 3.92
108 Motor Vehicles	0.0244	156.45	156.45	131.70	+	0.00	+ 18.79
109 Motorcycles	0.2570	122.49	120.09	116.76	+	2.00	+ 4.91
110 Bicycles	3.3483	131.36	131.36	110.47	+	0.00	+ 18.91