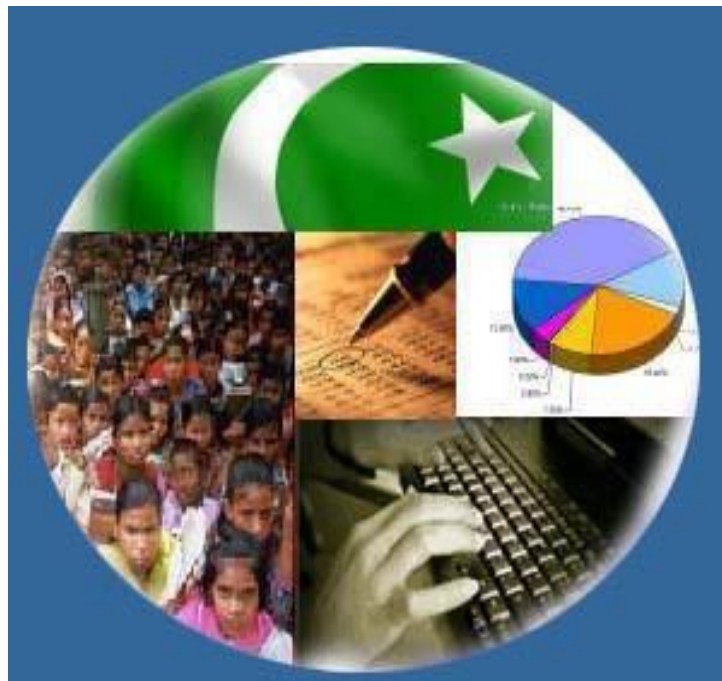




Monthly Review on Price Indices



December, 2019
(Base Year 2015-16)

Government of Pakistan
Ministry of Planning, Development & Special Initiatives
Pakistan Bureau of Statistics
Islamabad

Inflation in Brief

1. **CPI inflation General**, increased by 12.6% on year-on-year basis in December 2019 as compared to an increase of 12.7% in the previous month and 5.4% in December 2018. On month-on-month basis, it decreased by 0.3% in December 2019 as compared to an increase of 1.3% in the previous month and a decrease of 0.3% in December 2018.
2. **CPI inflation Urban**, increased by 12.0% on year-on-year basis in December 2019 as compared to an increase of 12.1% in the previous month and 5.9% in December 2018. On month-on-month basis, it decreased by 0.4% in December 2019 as compared to an increase of 1.0% in the previous month and a decrease of 0.3% in December 2018.
3. **CPI inflation Rural**, increased by 13.6% on year-on-year basis in December 2019 as compared to an increase of 13.6% in the previous month and 4.6% in December 2018. On month-on-month basis, it decreased by 0.3% in December 2019 as compared to an increase of 1.9% in the previous month and a decrease of 0.3% in December 2018.
4. **SPI inflation** on YoY increased by 18.1% in December 2019 as compared to an increase of 20.2% a month earlier and an increase of 1.5% in December 2018. On MoM basis, it decreased by 2.0% in December 2019 as compared to an increase of 3.7% a month earlier and a decrease of 0.3% in December 2018.
5. **WPI inflation** on YoY basis increased by 12.4% in December 2019 as compared to an increase of 11.2% a month earlier and an increase of 16.5% in December 2018. WPI inflation on MoM basis decreased by 0.3% in December 2019 as compared to a decrease of 0.8% a month earlier and a decrease of 1.3% in corresponding month of last year i.e. December 2018.
6. Figures 1.a and 1.b show graphically the data of Table 1. Table 1.1 shows "Period Average" and "YoY" percent changes in indices of three years.

Table 1.a General Inflation (%) (Base 2015-16)																		
PERIOD	CPI														SPI**		WPI	
	General						Food				Non-Food							
	National		Urban		Rural		Urban		Rural		Urban		Rural		YoY	MoM	YoY	MoM
	YoY	MoM	YoY	MoM	YoY	MoM	YoY	MoM	YoY	MoM	YoY	MoM	YoY	MoM				
Nov-18	5.7	-0.1	6.3	-0.1	4.7	-0.2	1.7	-0.2	0.9	-0.7	9.0	0.0	8.0	0.3	0.8	-0.7	18.6	1.0
Dec-18	5.4	-0.3	5.9	-0.3	4.6	-0.3	0.6	-1.8	0.5	-1.4	9.0	0.5	8.1	0.6	1.5	-0.3	16.5	-1.3
Jan-19	5.6	0.3	6.2	0.4	4.6	0.0	2.6	0.3	1.8	0.0	8.2	0.5	7.0	0.0	3.4	0.4	12.6	-0.8
Feb-19	6.8	0.9	7.2	0.9	6.0	0.9	5.9	2.3	5.2	1.7	8.0	0.1	6.7	0.2	7.2	2.4	13.9	1.6
Mar-19	8.6	2.0	8.9	1.9	8.2	2.2	8.8	2.5	9.3	3.3	9.0	1.5	7.3	1.3	10.5	2.1	16.6	2.2
Apr-19	8.3	0.7	8.4	0.8	8.1	0.6	8.3	1.3	9.3	0.6	8.4	0.6	7.2	0.6	10.0	0.5	17.1	1.8
May-19	8.4	0.6	8.5	0.7	8.3	0.5	9.0	1.3	9.7	0.6	8.3	0.3	7.1	0.4	9.9	0.6	16.5	1.5
Jun-19	8.0	0.5	8.1	0.3	7.9	0.7	7.5	-0.3	9.1	0.7	8.4	0.7	7.0	0.7	9.3	0.9	14.0	0.2
Jul-19	8.4	1.8	8.7	2.0	7.9	1.6	7.9	1.0	9.3	1.7	9.2	2.5	6.7	1.5	8.9	1.0	13.3	3.1
Aug-19	10.5	1.6	10.6	1.5	10.3	1.9	11.9	3.1	12.6	2.9	9.9	0.5	8.4	1.1	12.1	2.7	14.1	1.2
Sep-19	11.4	0.8	11.6	0.7	11.1	0.8	15.0	2.0	15.0	1.8	9.7	0.0	8.0	0.0	14.7	1.9	15.9	0.1
Oct-19	11.0	1.8	10.9	1.6	11.3	2.2	13.7	1.4	14.6	2.6	9.3	1.7	8.7	1.8	15.1	2.7	13.3	2.0
Nov-19	12.7	1.3	12.1	1.0	13.6	1.9	16.6	2.4	19.3	3.4	9.6	0.2	9.0	0.6	20.2	3.7	11.2	-0.8
Dec-19	12.6	-0.3	12.0	-0.4	13.6	-0.3	16.7	-1.7	19.7	-1.1	9.5	0.4	8.8	0.4	18.1	-2.0	12.4	-0.3

** SPI for quintile 1. Digits 0.0* are due to rounding off.

7. **Core inflation** measured by **non-food non-energy Urban CPI** (Core NFNE) increased by 7.5% on (YoY) basis in December 2019 as compared to an increase of 7.5% in the previous month and 7.8% in December 2018. On (MoM) basis, it increased by 0.4% in December 2019 as compared to increase of 0.3% in previous month, and an increase of 0.4% in corresponding month of last year i.e. December 2018.
8. **Core inflation** measured by **non-food non-energy Rural CPI** (Core NFNE) increased by 8.1% on (YoY) basis in December 2019 as compared to an increase of 8.4% in the previous month and 7.4% in December 2018. On (MoM) basis, it increased by 0.3% in December 2019 as compared to an increase of 0.5% in previous month, and an increase of 0.5% in corresponding month of last year i.e. December 2018.
9. **Core inflation**, measured by 20% weighted trimmed mean **Urban CPI** (Core Trimmed) increased by 9.6% on (YoY) basis in December 2019 as compared to 9.5% in the previous month and by 6.8% in December 2018. On (MoM) basis, it increased by 0.2% in December 2019 as compared to an increase of 0.4% in the previous month and an increase of 0.3% in corresponding month of last year i.e. December 2018.
10. **Core inflation**, measured by 20% weighted trimmed mean **Rural CPI** (Core Trimmed) increased by 10.8% on (YoY) basis in December 2019 as compared to 10.7% in the previous month and by 6.6% in December 2018. On (MoM) basis, it increased by 0.3% in December 2019 as compared to an increase of 0.7% in the previous month and an increase of 0.4% in corresponding month of last year i.e. December 2018.

Table 1.b Core Inflation (%) (Base 2015-16)

Period	NFNE				Trimmed			
	Urban		Rural		Urban		Rural	
	YoY	MoM	YoY	MoM	YoY	MoM	YoY	MoM
Nov-18	7.7	0.4	7.1	0.7	6.7	0.3	6.3	0.5
Dec-18	7.8	0.4	7.4	0.5	6.8	0.3	6.6	0.4
Jan-19	7.1	0.7	6.6	0.2	6.7	0.6	6.1	0.4
Feb-19	7.1	0.2	6.4	0.2	6.7	0.2	6.2	0.3
Mar-19	7.2	0.8	6.5	0.6	7.3	0.8	6.5	0.6
Apr-19	7.0	1.1	6.8	1.2	7.4	1.1	7.3	0.8
May-19	7.2	0.5	6.8	0.4	7.3	0.5	7.2	0.5
Jun-19	7.3	0.2	6.7	0.3	7.3	0.4	7.2	0.7
Jul-19	8.2	1.8	7.8	2.0	7.8	1.4	7.4	1.6
Aug-19	8.5	0.4	8.8	1.0	8.5	0.6	8.7	1.2
Sep-19	8.4	0.4	8.8	0.3	9.3	0.6	9.6	0.6
Oct-19	7.7	0.5	8.6	0.7	8.9	0.5	9.4	0.7
Nov-19	7.5	0.3	8.4	0.5	9.5	0.4	10.7	0.7
Dec-19	7.5	0.4	8.1	0.3	9.6	0.2	10.8	0.3

Table 1.1 Period Average and YoY % Change

INDEX	Average July- December % changes			December over December % changes		
	2019-2020	2018-2019	2017-2018	2019-2020	2018-2019	2017-2018
CPI (National)	11.11	5.96	4.74	12.63	5.37	5.61
CPI(Urban)	10.98	6.29	5.24	12.01	5.90	6.11
CPI(Rural)	11.30	5.47	3.98	13.58	4.58	4.87
SPI	14.87	1.90	3.43	18.14	1.46	4.51
WPI	13.31	16.90	3.19	12.37	16.46	4.53

Figure 1: UCPI Inflation YoY, Special Indices

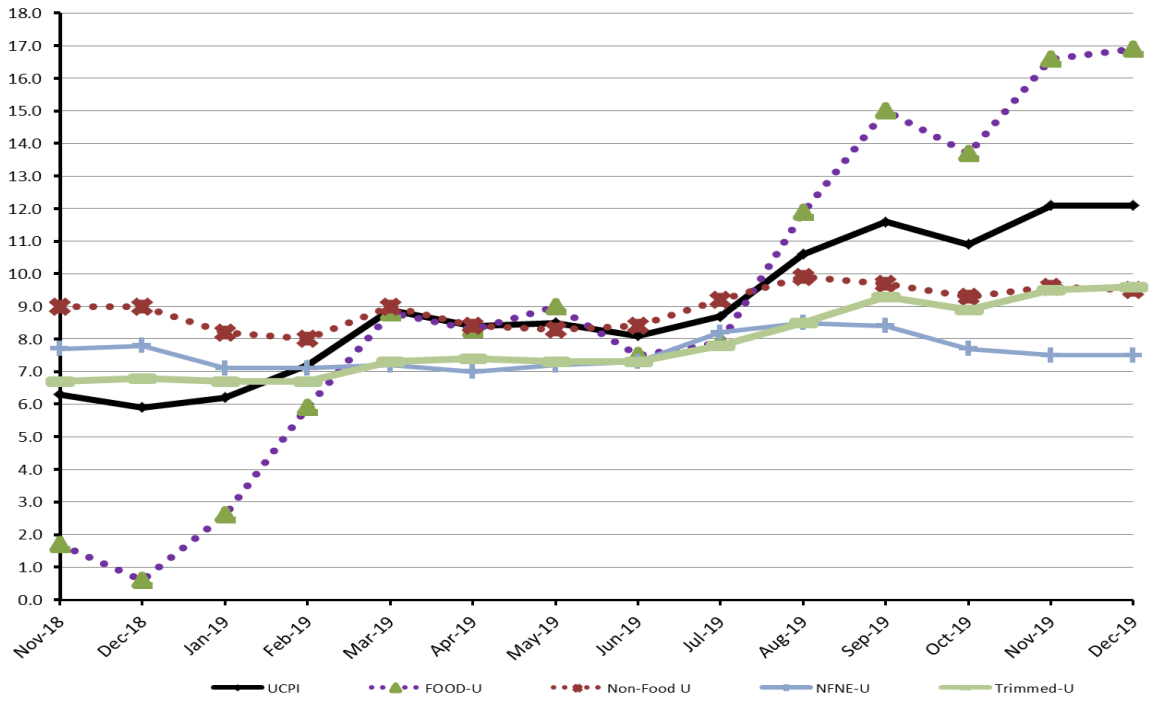
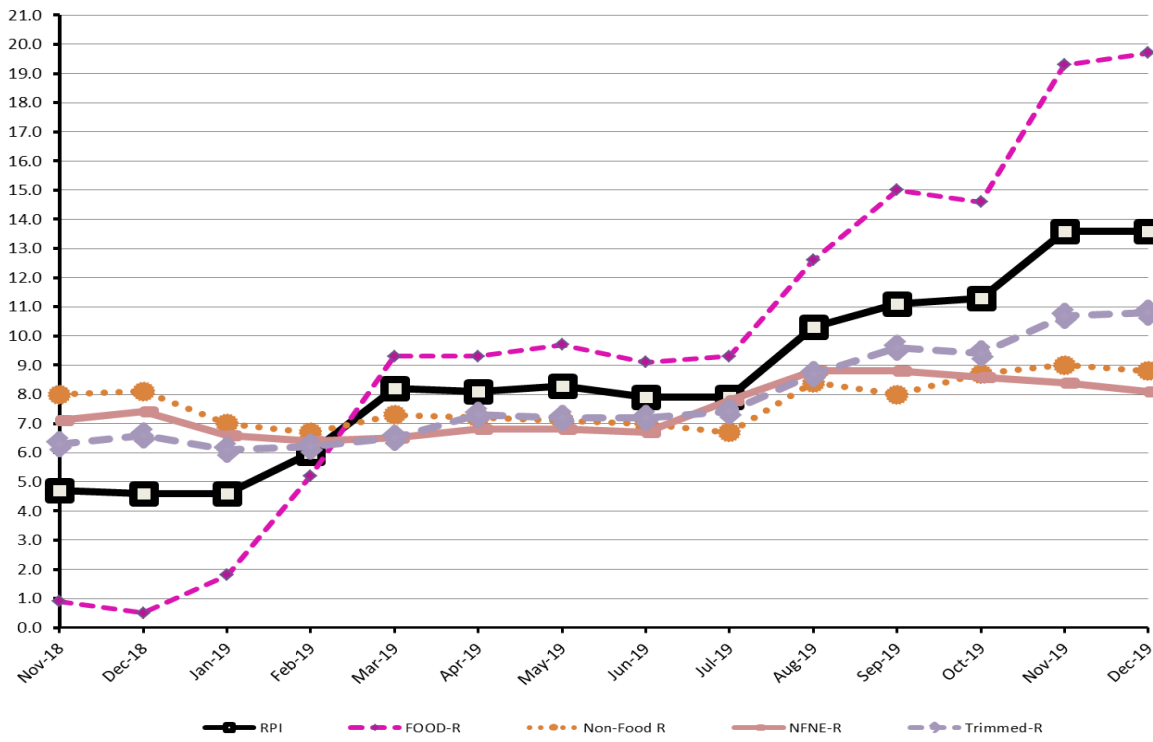


Figure 2: RCPI Inflation YoY, Special Indices



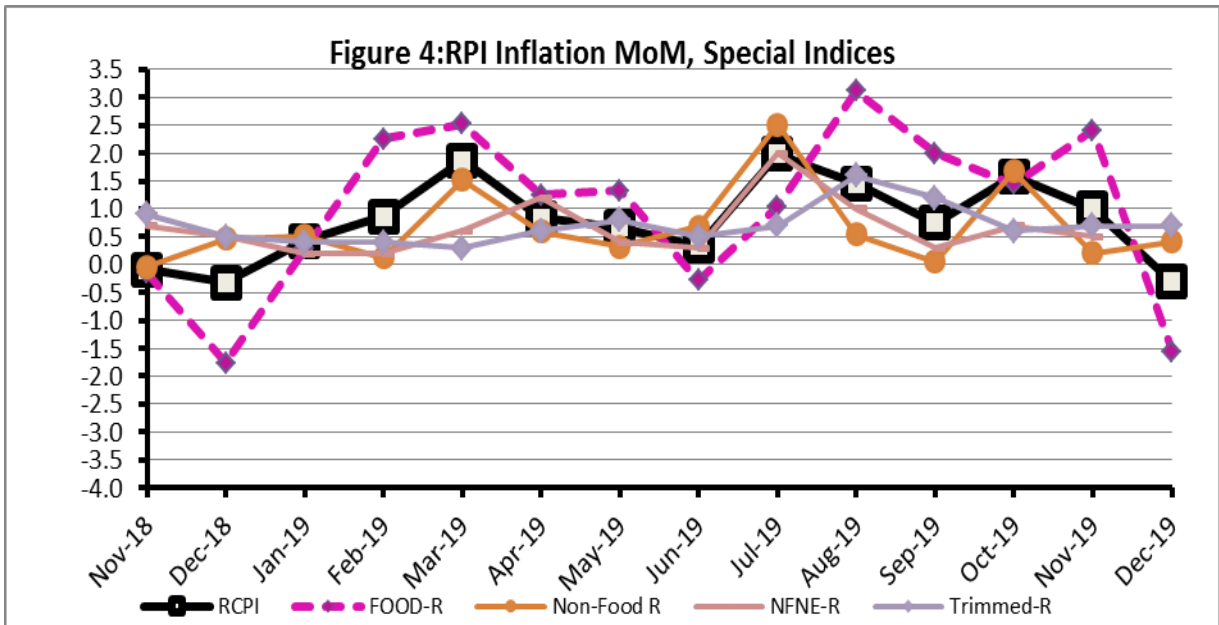
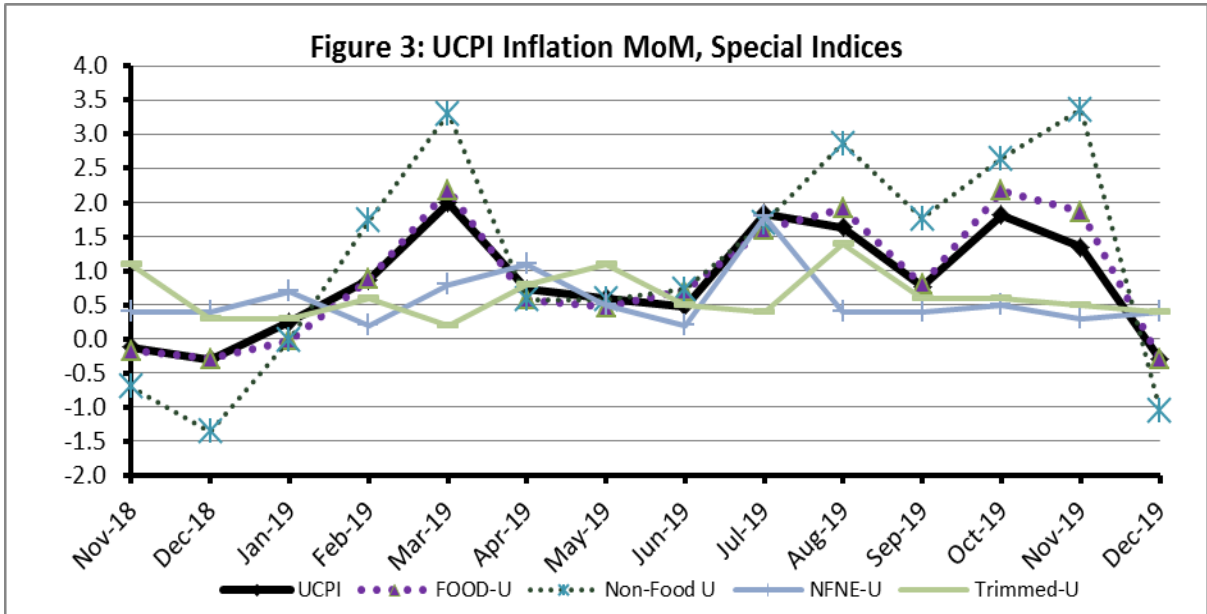


Figure 5: CPI Y.o.Y (National, Urban, Rural)

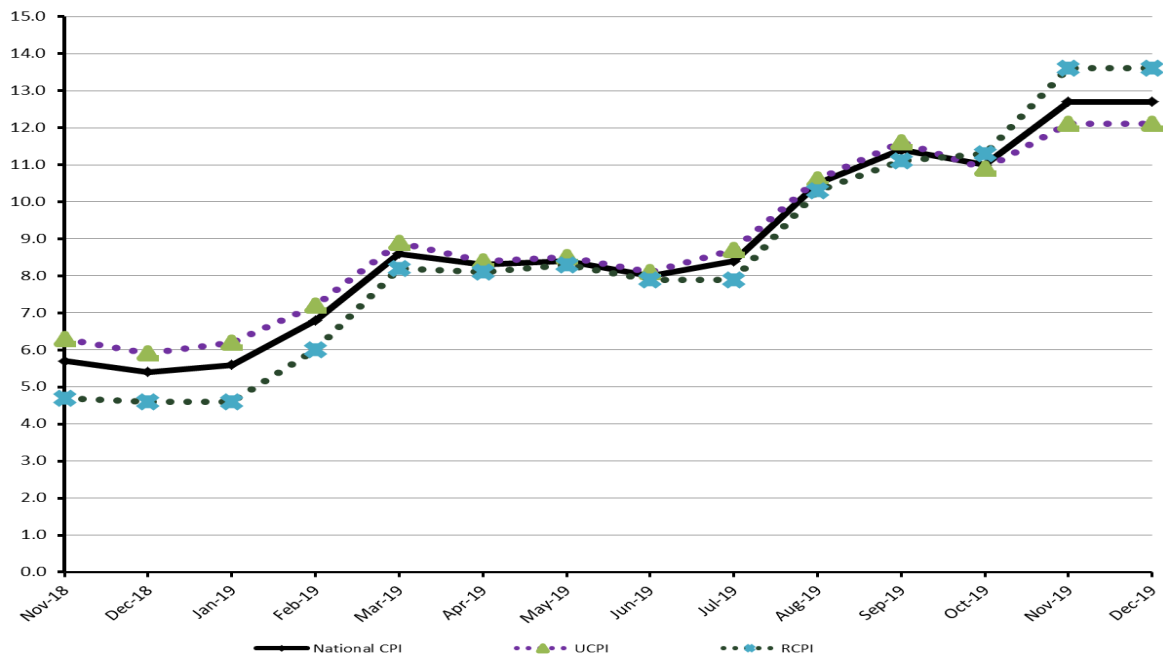
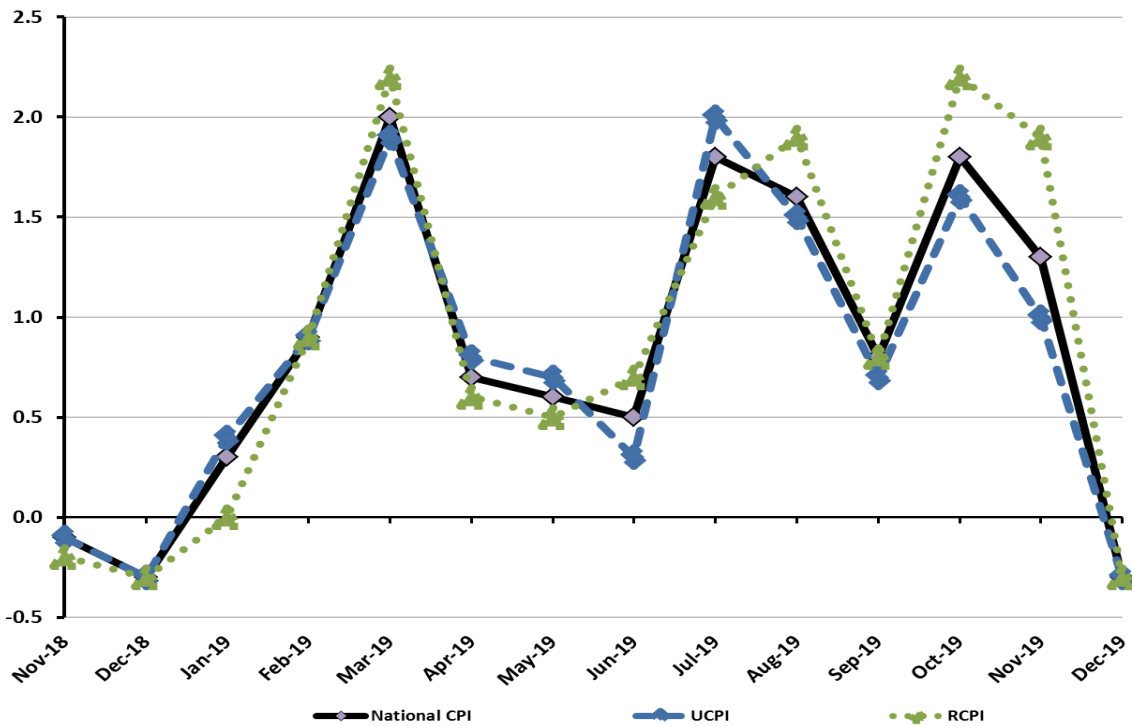


Figure 6: CPI M.o.M (National, Urban, Rural)



I. National Consumer Price Index (N-CPI)

The **National Consumer Price Index** of December 2019 is decreased by 0.34% over November 2019 and increased by 12.63% over corresponding month of the last year i.e. December 2018.

Table 1 : Consumer Price Index (National) by Group of Commodities and Services (Base 2015-16)

No	Group	Group Weight (%)	Indices			% Change December 2019 Over		Impact (In % points) Dec 2019 Over	
			Dec 2019	Nov 2019	Dec 2018	Nov 2019	Dec 2018	Nov 2019	Dec 2018
	General	100.00	130.45	130.90	115.82	-0.34	12.63	-0.34	12.63
1.	Food & Non-alcoholic Bev.	34.58	130.37	132.57	108.87	-1.66	19.74	-0.58	6.42
	<i>Non-perishable Food Items</i>	29.60	124.97	124.71	112.20	0.21	11.37	0.06	3.26
	<i>Perishable Food Items</i>	4.99	162.44	179.25	89.10	-9.37	82.31	-0.64	3.16
2.	Alcoholic Bev.& Tobacco	1.02	135.48	135.44	114.55	0.03	18.27	0.00	0.18
3.	Clothing & Footwear	8.60	128.57	127.94	117.21	0.49	9.70	0.04	0.84
4.	Housing, Water, Electricity, Gas & Fuels	23.63	129.89	129.43	119.68	0.36	8.53	0.08	2.08
5.	Furnishing & Household Equipment Maintenance	4.10	125.72	125.04	113.84	0.55	10.44	0.02	0.42
6.	Health	2.79	136.60	135.99	122.73	0.45	11.30	0.01	0.33
7.	Transport	5.91	143.91	142.55	125.52	0.95	14.65	0.06	0.94
8.	Communication	2.21	106.92	106.78	102.83	0.13	3.98	0.00	0.08
9.	Recreation & Culture	1.59	118.74	118.64	111.24	0.09	6.75	0.00	0.10
10.	Education	3.79	141.95	141.91	133.88	0.03	6.03	0.00	0.26
11.	Restaurants & Hotels	6.92	126.29	126.19	119.02	0.08	6.11	0.01	0.43
12.	Miscellaneous	4.87	131.75	131.48	119.04	0.21	10.68	0.01	0.53

II. Urban Consumer Price Index (UCPI)

The **Urban Consumer Price Index** of December 2019 is decreased by 0.37% over November 2019 and increased by 12.01% over corresponding month of the last year i.e. December 2018.

Table 2 : Consumer Price Index (Urban) by Group of Commodities and Services (Base 2015-16)

No	Group	Group Weight (%)	Indices			% Change December 2019 Over		Impact (In % points) Dec 2019 Over	
			Dec 2019	Nov 2019	Dec 2018	Nov 2019	Dec 2018	Nov 2019	Dec 2018
	General	100.00	130.57	131.05	116.57	-0.37	12.01	-0.37	12.01
1.	Food & Non-alcoholic Bev.	30.42	128.95	131.67	108.58	-2.07	18.76	-0.63	5.32
	Non-perishable Food Items	25.97	123.97	124.04	111.84	-0.06	10.85	-0.01	2.70
	Perishable Food Items	4.46	157.99	176.14	89.57	-10.30	76.39	-0.62	2.61
2.	Alcoholic Bev. & Tobacco	0.85	142.70	142.63	122.42	0.05	16.57	0.00	0.15
3.	Clothing & Footwear	8.01	126.10	125.23	115.10	0.69	9.56	0.05	0.76
4.	Housing, Water, Electricity, Gas & Fuels	27.03	131.62	131.21	120.34	0.31	9.37	0.09	2.62
5.	Furnishing & Household Equipment Maintenance	4.09	126.59	125.70	114.05	0.71	11.00	0.03	0.44
6.	Health	2.31	137.10	136.36	123.63	0.54	10.90	0.01	0.27
7.	Transport	6.14	145.01	143.60	125.44	0.98	15.60	0.07	1.03
8.	Communication	2.35	108.18	107.98	102.76	0.19	5.27	0.00	0.11
9.	Recreation & Culture	1.73	117.18	117.14	110.19	0.03	6.34	0.00	0.10
10.	Education	4.88	144.67	144.63	136.09	0.03	6.30	0.00	0.36
11.	Restaurants & Hotels	7.41	124.97	124.95	119.10	0.02	4.93	0.00	0.37
12.	Miscellaneous	4.77	132.17	131.88	120.07	0.22	10.08	0.01	0.50

Main contributors to month-on-month and year-on-year percentage changes are given below and detail is given in Annexure A.

1. MONTH-ON-MONTH Top few commodities which varied from previous month are given below: -

Food Items Increased: Dry fruits(6.35%), Wheat(5.62%), Eggs (4.61%), Fresh fruits(2.3%), Pulse moong (1.88%), Pulse mash(1.84%), Cooking oil(1.71%), Beans(1.22%) and Fish(1.22%).
Decreased: Tomatoes(36.49%), Onions(12.45%), Chicken (11.21%), Fresh vegetables(4.62%), Sugar(3.54%) and Potatoes(1.96%).

Non-food Items Increased: Woolen readymade garments(2.72%), Tailoring (2.36%), Construction input items(2.06%), Electricity charges(1.54%), and Woolen cloth(1.15%).

Decreased: Motor fuel (0.18%), and Liquefied Hydrocarbons (0.05%)

YEAR-ON-YEAR: Top few commodities which varied from previous year i.e. December 2018 are given below:-

Food Items Increased: Tomatoes(321.04%), Onions(169.45%), Fresh vegetables(83.59%), Potatoes(78.23%), Pulse moong (53.24%), Pulse mash(38.44%), Gur(31.22%), Sugar(27.81%), Wheat(21.68%), Cooking oil(16.67%), Vegetable ghee(16.39%), Wheat flour (15.8%), Pulse masoor(13.82%), Fish(13.64%), Meat(13.45%), Dry fruits(13.25%), Besan(11.96%), Beverages(11.1%), Pulse gram(11%), Beans(10.84%), Milk powder (10.64%) and Tea(10.21%).

Decreased: Chicken (17.17%).

Non-food Items Increased: Gas charges(54.84%), Construction input items(18.51%), Motor fuel(17.95%), Electricity charges(17.57%), Motor vehicles(16.6%), Cotton cloth(12.49%), Transport services(11.89%), Doctor (MBBS) clinic fee(11.2%), Woolen cloth(10.44%), and Motor vehicle accessories(10.04%).

Decreased: Liquefied Hydrocarbons (2.83%).

III. Rural Consumer Price Index (RCPI)

The Rural Consumer Price Index of December 2019 is decreased by 0.3% over November 2019 and increased by 13.58% over corresponding month of the last year i.e. December 2018.

Table 3 : Consumer Price Index (Rural) by Group of Commodities and Services (Base 2015-16)

No	Group	Group Weight (%)	Indices			% Change December 2019 Over		Impact (In % points) Dec 2019 Over	
			Dec 2019	Nov 2019	Dec 2018	Nov 2019	Dec 2018	Nov 2019	Dec 2018
	General	100.00	130.28	130.67	114.70	-0.30	13.58	-0.30	13.58
1.	Food & Non-alcoholic Bev.	40.87	131.96	133.58	109.20	-1.21	20.84	-0.51	8.11
	Non-perishable Food Items	35.08	126.08	125.45	112.61	0.50	11.96	0.17	4.12
	Perishable Food Items	5.79	167.62	182.86	88.56	-8.33	89.27	-0.67	3.99
2.	Alcoholic Bev. & Tobacco	1.28	128.20	128.20	106.62	0.00	20.24	0.00	0.24
3.	Clothing & Footwear	9.48	131.72	131.40	119.89	0.24	9.87	0.02	0.98
4.	Housing, Water, Electricity, Gas & Fuels	18.49	126.06	125.49	118.23	0.45	6.62	0.08	1.26
5.	Furnishing & Household Equipment Maintenance	4.10	124.41	124.04	113.52	0.30	9.59	0.01	0.39
6.	Health	3.51	136.10	135.62	121.84	0.35	11.70	0.01	0.44
7.	Transport	5.56	142.07	140.80	125.65	0.90	13.07	0.05	0.80
8.	Communication	1.99	104.67	104.63	102.95	0.04	1.67	0.00	0.03
9.	Recreation & Culture	1.38	121.71	121.48	113.22	0.19	7.50	0.00	0.10
10.	Education	2.13	132.56	132.50	126.26	0.05	4.99	0.00	0.12
11.	Restaurants & Hotels	6.19	128.68	128.42	118.87	0.20	8.25	0.01	0.53
12.	Miscellaneous	5.02	131.15	130.90	117.55	0.19	11.57	0.01	0.59

Main contributors to month-on-month and year-on-year percentage changes are given below and detail is given in Annexure A.

1. **MONTH-ON-MONTH** Top few commodities which varied from previous month are given below: -

Food Items Increased: Pulse Masoor(3.88%), Pulse Mash(3.8%), Wheat(3.46%), Fresh fruits(3.25%), Cooking oil(3.2%), Pulse Moong(3.19%), Eggs(2.99%), Pulse Gram(2.7%), Vegetable ghee(2.49%), Gram Whole(2.27%), Besan (2%), Potatoes(1.31%), Fish(1.18%) and Dry fruits(1.17%).

Decreased: Tomatoes(29.17%), Onions(13.63%), Chicken(10.85%), Fresh Vegetables(2.99%), Sugar(2.76%), Gur(1.68%) and Wheat Flour(0.36%).

Non-food Items Increased: Electricity Charges(1.54%), Medical Tests(1.13%) and Woolen Readymade Garments(1.13%).

Decreased: Liquefied Hydrocarbons(0.42%) and Motor Fuels(0.22%).

YEAR-ON-YEAR: Top few commodities which varied from previous year i.e. December 2018 are given below:-

Food Items Increased: Tomatoes(342.53%), Onions(174.83%), Fresh Vegetables(80.19%), Potatoes(68.04%), Pulse Moong(55.84%), Pulse Mash(35.97%), Gur(31.85%), Sugar(28.79%), Cooking oil(22.22%), Wheat(22.22%), Fresh fruits(21.54%), Vegetable ghee(18.38%), Wheat Flour(18.28%), Beans(17.06%), Pulse Masoor(16.57%), Fish(14.06%), Beverages(13.54%), Pulse Gram(12.76%), Milk powder(12.29%), Meat(11.93%), Tea(10.38%) and Rice(10.03%).

Decreased: Chicken(19.0%) and Eggs(1.33%).

Non-food Items Increased: Motor Fuels(18.23%), Doctor Clinic Fee(17.57%), Electricity Charges(17.57%), Medical Tests(14.03%), Cotton Cloth(13.55%), Motor Vehicles(12.98%), Motor Vehicles Accessories(12.11%), Construction Wage Rates(11.01%), Readymade Garments(10.84%) and Woolen Cloth(10.25%).

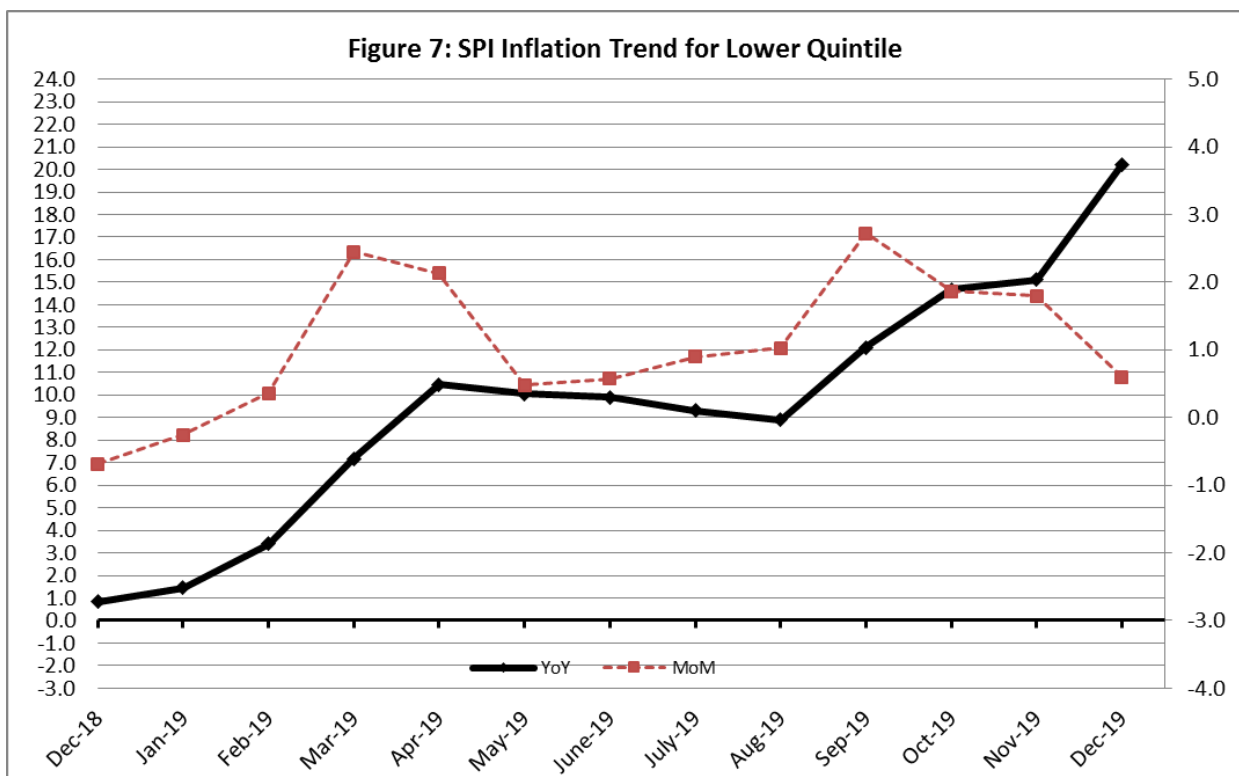
Decreased: Liquefied Hydrocarbons(2.91%).

IV. Sensitive Price Indicator

Quintile-wise percentage changes YoY and MoM are given below in Table 3. The series from December 2018 to December 2019 is also graphed below in Figure 7.

Table 4: Sensitive Price Indicator (Base 2015-16)					
Quintiles	Indices			% Change December 2019 Over	
	December 2019	December 2019	December 2018	December 2019	December 2018
1	134.13	136.83	113.53	-1.97	18.14
2	129.92	132.35	109.43	-1.84	18.72
3	131.43	133.56	108.59	-1.59	21.03
4	128.39	130.30	107.05	-1.47	19.93
5	132.03	133.30	112.35	-0.95	17.52
Combined	130.36	132.02	110.29	-1.26	18.20

Table 4.1 : Weekly Percentage Change of SPI During December-19				
Quintiles	% Change with Previous week			
	05-12-2019	12-12-2019	19-12-2019	26-12-2019
Quintile 1	-1.18	-0.88	-0.24	0.25
Combined	-0.83	-0.54	-0.03	0.65



V. Wholesale Price Index

The Wholesale Price Index for December, 2019 decreased by 0.3% over November 2019. It increased by 12.37% over the corresponding month of the last year. YoY and MoM movements, from December, 2018 to December, 2019 are also graphed below in Figure 4.

Table 5 : Wholesale Price Index by Group of Commodities (Base 2015-16)

No.	Group	Group Weight (%)	Indices			% Change December 2019 Over		Impact (In % points) Dec 2019 Over	
			Dec 2019	Nov 2019	Dec 2018	Nov 2019	Dec 2018	Nov 2019	Dec 2018
	General	100.00	141.75	142.17	126.15	-0.30	12.37	-0.30	12.37
1.	Agriculture, Forestry & Fishery Products	25.77	139.17	141.84	121.76	-1.88	14.30	-0.48	3.56
2.	Ores & Minerals, Electricity, Gas & Water	12.01	169.06	167.86	130.84	0.71	29.21	0.10	3.64
3.	Food Products, Beverages & Tobacco, Textiles, Apparel & Leather Products	31.11	130.41	130.25	117.68	0.12	10.82	0.04	3.14
	i. Food Products, Bev. & Tobacco	20.07	124.83	124.31	110.88	0.42	12.58	0.07	2.22
	ii. Textiles and Apparel	10.33	142.51	143.05	131.53	-0.38	8.35	-0.04	0.90
	iii. Leather Products	0.71	111.94	111.94	108.48	0.00	3.19	0.00	0.02
4.	Other Transportable Goods except Metal Products, Machinery & Equipment	22.40	149.35	150.58	144.71	-0.82	3.21	-0.19	0.82
5.	Metal Products, Machinery & Equipment	8.72	132.68	128.73	115.21	3.07	15.16	0.24	1.21

Main contributors to month-on-month and year-on-year percentage changes are given below and detail is given in Annexure B.

1. **MONTH-ON-MONTH** Top few commodities which varied from previous month i.e. December, 2019 are given below: -

Increased: Eggs(13.3%), Fresh Fruits(4.76%), Wheat (4.44%), Vegetable Ghee(2.71%), Pulses(2.4%), Sugar Crops(2.29%), Electrical Energy(1.72%), Dry Fruits(1.45%), Cotton Seeds(1.21%)

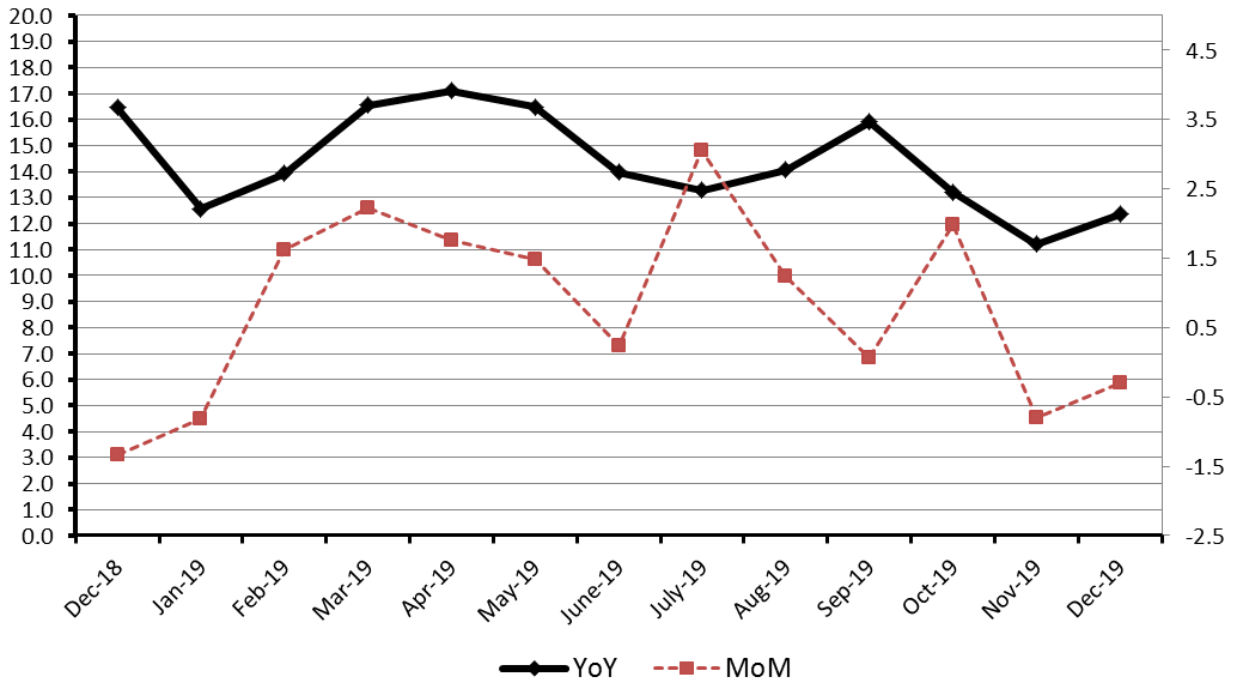
Decreased: Vegetables(14.25%), Poultry(13.9%), Maize(5.23%), Diesel Oil(2.75%), Sugar Refined(2.22%), Cement(0.45%) and Rice(0.24%).

2. **YEAR-ON-YEAR** Top few commodities which varied from previous year i.e. December, 2018 are given below: -

Increased: Vegetables(159.33%), Electrical Energy(33.02%), Natural Gas Liquefied(28.62%), Sugar Refined(28.53%), Wheat (21.11%), Pulses(20.33%), Wheat Flour(16.63%), Kerosene Oil(15.39%), Fertilizers(14.57%), and Rice(12.04%).

Decreased: Poultry(20.53%), Furnace Oil(16.69%), Cement(2.55%) and Raw Animal Materials / Wool(1.29%).

Figure 8: WPI Inflation



Annexure A:CPI (Urban) Index Numbers by Commodity Groups & Commodities (2015-16=100)

Item and Specification	Weight	Index Numbers			% Change in Dec 2019 over			
		Dec 19	Nov 19	Dec 18	Nov 2019	Dec 2018		
General	100.0000	130.57	131.05	116.57	-	0.37	+	12.01
Food and non-alcoholic Bevera	30.4215	128.95	131.67	108.58	-	2.07	+	18.76
01 Wheat	0.6120	125.83	119.13	103.41	+	5.62	+	21.68
02 Wheat flour	3.0075	118.67	118.97	102.48	-	0.25	+	15.80
03 Wheat products	0.0936	121.24	119.60	104.61	+	1.37	+	15.90
04 Besan	0.0830	115.21	114.77	102.90	+	0.38	+	11.96
05 Rice	1.1804	129.56	129.01	121.70	+	0.43	+	6.46
06 Bakery and confectionary	0.4770	124.03	122.36	108.32	+	1.36	+	14.50
07 Nimco	0.1224	119.29	117.77	109.60	+	1.29	+	8.84
08 Meat	2.0411	140.77	140.30	124.08	+	0.33	+	13.45
09 Chicken	1.3631	98.88	111.36	119.37	-	11.21	-	17.17
10 Fish	0.3855	126.39	124.87	111.22	+	1.22	+	13.64
11 Milk fresh	7.1070	120.26	120.19	110.59	+	0.06	+	8.74
12 Milk products	0.6407	122.93	122.90	113.50	+	0.02	+	8.31
13 Milk powder	0.3106	123.96	123.53	112.04	+	0.35	+	10.64
14 Eggs	0.5083	136.75	130.72	134.04	+	4.61	+	2.02
15 Butter	0.0932	148.69	148.69	113.37	+	0.00	+	31.15
16 Mustard oil	0.0120	115.20	114.83	105.51	+	0.32	+	9.18
17 Cooking oil	1.1016	132.43	130.20	113.51	+	1.71	+	16.67
18 Vegetable ghee	1.0324	131.10	129.87	112.64	+	0.95	+	16.39
19 Dry fruits	0.3299	131.97	124.09	116.53	+	6.35	+	13.25
20 Fresh fruits	1.4363	111.34	108.84	102.03	+	2.30	+	9.12
21 Pulse masoor	0.1624	90.19	89.84	79.24	+	0.39	+	13.82
22 Pulse moong	0.1697	117.52	115.35	76.69	+	1.88	+	<u>53.24</u>
23 Pulse mash	0.1152	86.87	85.30	62.75	+	1.84	+	38.44
24 Pulse gram	0.1660	111.78	111.02	100.70	+	0.68	+	11.00
25 Gram whohe	0.0912	120.80	120.20	117.81	+	0.50	+	2.54
26 Beans	0.0408	120.84	119.38	109.02	+	1.22	+	10.84
27 Potatoes	0.4496	186.87	190.60	104.85	-	1.96	+	<u>78.23</u>
28 Onions	0.5928	170.16	194.35	63.15	-	12.45	+	<u>169.4</u>
29 Tomatoes	0.3459	273.76	431.06	65.02	-	36.49	+	<u>321.0</u>
30 Fresh vegetables	1.5306	158.05	165.70	86.09	-	4.62	+	<u>83.59</u>
31 Sugar	1.1130	113.11	117.26	88.50	-	3.54	+	27.81
32 Gur	0.0379	125.33	126.13	95.51	-	0.63	+	31.22
33 Honey	0.1017	116.40	116.07	110.13	+	0.28	+	5.69
34 Sweetmeat	0.3535	135.16	134.69	121.46	+	0.35	+	11.28
35 Ice cream	0.1044	124.12	123.43	111.68	+	0.56	+	11.14
36 Condiments and Spices	1.3340	145.09	145.46	123.34	-	0.25	+	17.63
37 Dessert preparation	0.0419	117.50	115.86	110.46	+	1.42	+	6.37
38 Tea	0.8427	140.39	140.36	127.38	+	0.02	+	10.21
39 Beverages	0.8906	121.80	121.70	109.63	+	0.08	+	11.10
Alcoholic Beverages, Tobacco	0.8540	142.70	142.63	122.42	+	0.05	+	16.57
40 Cigarettes	0.7167	134.65	134.64	110.66	+	0.01	+	21.68
41 Pan prepared	0.1373	184.70	184.34	183.84	+	0.20	+	0.47
Clothing and footwear	8.0096	126.10	125.23	115.10	+	0.69	+	9.56
42 Cotton cloth	2.2227	126.56	126.52	112.51	+	0.03	+	12.49
43 Woolen cloth	0.8361	120.94	119.57	109.51	+	1.15	+	10.44
44 Readymade garments	1.3196	127.38	126.97	121.02	+	0.32	+	5.26
45 Woolen readymade garments	0.4307	123.78	120.50	116.02	+	2.72	+	6.69
46 Tailoring	1.0741	134.64	131.54	125.11	+	2.36	+	7.62
47 Hosiry	0.4070	125.57	124.69	116.97	+	0.71	+	7.35
48 Dopatta	0.1713	120.01	119.59	110.60	+	0.35	+	8.51
49 Cleaning and laundring	0.0665	129.05	128.17	118.80	+	0.69	+	8.63
50 Footware	1.4816	122.39	122.39	109.18	+	0.00	+	12.10
Housing, water, Elec., Gas an	27.0332	131.62	131.21	120.34	+	0.31	+	9.37
51 House rent	19.2558	127.29	127.29	121.21	+	0.00	+	5.02
52 Construcion input items	0.3765	143.10	140.21	120.75	+	2.06	+	18.51
53 Construction wage rates	0.2025	146.32	145.73	133.99	+	0.40	+	9.20
54 Water supply	0.5269	131.54	131.54	119.08	+	0.00	+	10.46
55 Garbage collection	0.1064	154.80	146.12	143.43	+	5.94	+	7.93
56 Electricity charges	4.5562	127.65	125.72	108.57	+	1.54	+	17.57
57 Gas charges	1.0807	216.94	216.94	140.11	+	0.00	+	<u>54.84</u>

Annexure A:CPI (Urban) Index Numbers by Commodity Groups & Commodities (2015-16=100)

Item and Specification	Weight	Index Numbers			% Change in Dec 2019 over			
		Dec 19	Nov 19	Dec 18	Nov 2019	Dec 2018		
58 Liquified Hydrocarbons	0.5064	147.47	147.54	151.77	-	0.05	-	2.83
59 Solid Fuel	0.4218	111.28	110.58	108.26	+	0.63	+	2.79
<i>Furnishing and household equi</i>	4.0937	126.59	125.70	114.05	+	0.71	+	11.00
60 Furniture and furnishing	0.4750	126.90	123.59	115.69	+	2.68	+	9.69
61 Carpets	0.0308	107.52	107.59	104.66	-	0.07	+	2.73
62 Household textiles	0.3420	124.36	124.17	119.79	+	0.15	+	3.82
63 Household equipments	1.0032	125.07	123.84	113.73	+	0.99	+	9.97
64 Plastic products	0.0536	115.87	115.84	111.66	+	0.03	+	3.77
65 Major tools & equipments	0.0084	119.10	119.10	113.37	+	0.00	+	5.05
66 Washing soap/detergents/match	1.4112	126.88	126.33	113.62	+	0.44	+	11.67
67 Household servant	0.7695	130.45	130.45	112.26	+	0.00	+	16.20
<i>Health</i>	2.3098	137.10	136.36	123.63	+	0.54	+	10.90
68 Drugs and medicines	1.0735	136.73	135.17	116.02	+	1.15	+	17.85
69 Therapeutic Appliances and Eq	0.0054	107.01	107.01	106.70	+	0.00	+	0.29
70 Doctor (MBBS) clinic fee	0.4044	161.06	161.01	144.84	+	0.03	+	11.20
71 Dental services	0.0156	115.64	115.64	117.09	+	0.00	-	1.24
72 Medical tests	0.2367	123.64	123.51	117.75	+	0.11	+	5.00
73 Hospitals services	0.5742	127.34	127.34	125.67	+	0.00	+	1.33
<i>Transport</i>	6.1368	145.01	143.60	125.44	+	0.98	+	15.60
74 Motor vehicles	0.8097	145.41	145.35	124.71	+	0.04	+	16.60
75 Motor vehicle accessories	0.1941	125.88	123.72	114.39	+	1.75	+	10.04
76 Motor fuel	2.9088	158.62	158.91	134.48	-	0.18	+	17.95
77 Mechanical services	0.4290	128.45	126.30	113.34	+	1.70	+	13.33
78 Motor vehicle tax	0.0482	126.72	126.72	115.63	+	0.00	+	9.59
79 Transport services	1.7470	128.87	124.21	115.18	+	3.75	+	11.89
<i>Communication</i>	2.3536	108.18	107.98	102.76	+	0.19	+	5.27
80 Postal services	0.0190	147.05	147.05	147.05	+	0.00	+	0.00
81 Communication apparatus	0.4524	118.50	117.50	107.74	+	0.85	+	9.99
82 Communication Services	1.8822	105.30	105.30	101.11	+	0.00	+	4.14
<i>Recreation and culture</i>	1.7301	117.18	117.14	110.19	+	0.03	+	6.34
83 Recreation and culture	0.6478	108.53	108.52	106.91	+	0.01	+	1.52
84 Text books	0.6655	117.05	117.05	106.32	+	0.00	+	10.09
85 Newspapers	0.0716	151.55	151.55	145.89	+	0.00	+	3.88
86 stationery	0.3452	126.52	126.34	116.39	+	0.14	+	8.70
<i>Education</i>	4.8807	144.67	144.63	136.09	+	0.03	+	6.30
87 Education	4.8807	144.67	144.63	136.09	+	0.03	+	6.30
<i>Restaurants and hotels</i>	7.4050	124.97	124.95	119.10	+	0.02	+	4.93
88 Readymade food	5.5235	124.91	124.89	117.60	+	0.02	+	6.22
89 Marriage Hall Charges	1.7514	126.10	126.09	124.35	+	0.01	+	1.41
90 Accommodation Services	0.1301	112.40	112.40	111.95	+	0.00	+	0.40
<i>Misc. goods and services</i>	4.7720	132.17	131.88	120.07	+	0.22	+	10.08
91 Personal Grooming Services	0.8001	123.67	123.30	116.02	+	0.30	+	6.59
92 Electrical Appliances for Per	0.0465	116.54	116.55	113.93	-	0.01	+	2.29
93 Appliances/Articles/Products	2.9807	125.23	124.46	115.16	+	0.62	+	8.74
94 Personal Effects n.e.c.	0.9447	162.03	163.32	139.29	-	0.79	+	16.33

Annexure B:CPI (Rural) Index Numbers by Commodity Groups & Commodities (2015-16=100)

Item and Specification	Weight	Index Numbers			% Change in Dec 2019 over			
		Dec 19	Nov 19	Dec 18	Nov 2019	Dec 2018		
General	100.0000	130.28	130.67	114.70	-	0.30	+	13.58
Food and non-alcoholic Bevera	40.8668	131.96	133.58	109.20	-	1.21	+	20.84
01 Wheat	3.4736	127.62	123.35	104.42	+	3.46	+	22.22
02 Wheat Flour	3.4297	120.49	120.93	101.87	-	0.36	+	18.28
03 Wheat Products	0.1068	122.39	120.66	111.10	+	1.43	+	10.16
04 Besan	0.0728	117.92	115.61	108.29	+	2.00	+	8.89
05 Rice	1.5501	157.49	157.15	143.13	+	0.22	+	10.03
06 Bakery and Confectionary	0.3702	120.57	119.30	110.99	+	1.06	+	8.63
07 Nimco	0.0774	116.83	115.74	107.47	+	0.94	+	8.71
08 Meat	1.7146	139.92	139.53	125.01	+	0.28	+	11.93
09 Chicken	1.4641	104.62	117.35	129.16	-	10.85	-	19.00
10 Fish	0.2640	128.15	126.66	112.35	+	1.18	+	14.06
11 Milk fresh	10.3803	121.45	121.45	113.05	+	0.00	+	7.43
12 Milk products	0.9624	123.38	123.38	115.11	+	0.00	+	7.18
13 Milk powder	0.1062	117.85	117.70	104.95	+	0.13	+	12.29
14 Eggs	0.5665	131.37	127.56	133.14	+	2.99	-	1.33
15 Butter	0.3333	123.20	122.96	115.56	+	0.20	+	6.61
16 Mustard oil	0.0136	120.83	120.79	112.15	+	0.03	+	7.74
17 Cooking oil	0.6011	139.66	135.33	114.27	+	3.20	+	22.22
18 Vegetable ghee	2.3764	140.44	137.03	118.63	+	2.49	+	18.38
19 Dry fruits	0.2496	133.58	132.03	123.62	+	1.17	+	8.06
20 Fresh fruits	1.4505	115.49	111.85	95.02	+	3.25	+	21.54
21 Pulse Masoor	0.2076	92.91	89.44	79.70	+	3.88	+	16.57
22 Pulse Moong	0.2510	125.70	121.82	80.66	+	3.19	+	55.84
23 Pulse Mash	0.1465	88.31	85.08	64.95	+	3.80	+	35.97
24 Pulse Gram	0.2751	114.56	111.55	101.60	+	2.70	+	12.76
25 Gram Whole	0.1116	121.59	118.89	117.94	+	2.27	+	3.09
26 Beans	0.0896	134.90	134.05	115.24	+	0.63	+	17.06
27 Potatoes	0.7437	194.27	191.75	115.61	+	1.31	+	68.04
28 Onions	0.8965	168.50	195.10	61.31	-	13.63	+	174.8
29 Tomatoes	0.5069	287.78	406.32	65.03	-	29.17	+	342.5
30 Fresh Vegetables	2.0947	162.44	167.44	90.15	-	2.99	+	80.19
31 Sugar	2.0296	115.41	118.69	89.61	-	2.76	+	28.79
32 Gur	0.1522	124.39	126.51	94.34	-	1.68	+	31.85
33 Honey	0.0296	120.22	119.70	116.33	+	0.43	+	3.34
34 Sweetmeat	0.3967	123.33	122.69	111.50	+	0.52	+	10.61
35 Ice Cream	0.0568	121.14	119.50	113.03	+	1.37	+	7.18
36 Condiments and Spices	1.4919	138.06	128.96	113.11	+	7.06	+	22.06
37 Dessert Preparation	0.0133	114.00	113.54	107.10	+	0.41	+	6.44
38 Tea	1.2566	136.80	136.71	123.94	+	0.07	+	10.38
39 Beverages	0.5537	122.39	122.23	107.79	+	0.13	+	13.54
Alcoholic Beverages, Tobacco	1.2786	128.20	128.20	106.62	+	0.00	+	20.24
40 Cigarettes	1.2364	127.44	127.44	105.44	+	0.00	+	20.86
41 Pan Prepared	0.0422	150.48	150.48	141.17	+	0.00	+	6.59
Clothing and footwear	9.4826	131.72	131.40	119.89	+	0.24	+	9.87
42 Cotton Cloth	2.8381	143.00	142.48	125.94	+	0.36	+	13.55
43 Woolen Cloth	1.0959	124.43	124.28	112.86	+	0.12	+	10.25
44 Readymade Garments	1.1345	128.26	128.26	115.72	+	0.00	+	10.84
45 Woolen Readymade Garments	0.5401	124.10	122.71	118.80	+	1.13	+	4.46
46 Tailoring	1.2999	131.66	131.66	124.62	+	0.00	+	5.65
47 Hosiry	0.4322	143.28	142.69	123.98	+	0.41	+	15.57
48 Dopatta	0.2078	124.09	123.65	114.66	+	0.36	+	8.22
49 Cleaning and Laundering	0.0176	120.91	120.91	113.29	+	0.00	+	6.73
50 Footware	1.9165	121.75	121.58	114.24	+	0.14	+	6.57
Housing, water, Elec., Gas an	18.4853	126.06	125.49	118.23	+	0.45	+	6.62
51 House Rent	8.6110	126.65	126.65	121.66	+	0.00	+	4.10
52 Construction Input Items	0.6306	120.57	120.56	114.99	+	0.01	+	4.85
53 Construction Wage Rates	0.2526	143.53	143.36	129.30	+	0.12	+	11.01
54 Water Supply	0.0645	158.09	154.00	121.10	+	2.66	+	30.55
55 Garbage Collection	0.0080	132.21	132.21	130.71	+	0.00	+	1.15
56 Electricity Charges	3.4431	127.65	125.72	108.57	+	1.54	+	17.57
57 Liquified Hydrocarbons	0.9994	135.65	136.22	139.72	-	0.42	-	2.91

Annexure B:CPI (Rural) Index Numbers by Commodity Groups & Commodities (2015-16=100)

Item and Specification	Weight	Index Numbers			% Change in Dec 2019 over	
		Dec 19	Nov 19	Dec 18	Nov 2019	Dec 2018
58 Solid Fuel	4.4761	120.88	119.93	114.02	+ 0.79	+ 6.02
<i>Furnishing and household equi</i>	4.1031	124.41	124.04	113.52	+ 0.30	+ 9.59
59 Furniture and Furnishing	0.5786	125.04	124.12	114.48	+ 0.74	+ 9.22
60 Household Textiles	0.4382	122.80	122.38	114.44	+ 0.34	+ 7.31
61 Household Equipments	1.2774	130.56	130.39	119.19	+ 0.13	+ 9.54
62 Plastic Products	0.0776	133.49	133.44	121.53	+ 0.04	+ 9.84
63 Major Tools and Equipments	0.0324	113.71	113.71	111.10	+ 0.00	+ 2.35
64 Washing Soaps, Detergents and	1.6989	119.78	119.45	108.38	+ 0.28	+ 10.52
<i>Health</i>	3.5141	136.10	135.62	121.84	+ 0.35	+ 11.70
65 Drugs and Medicines	1.5792	138.13	137.70	120.33	+ 0.31	+ 14.79
66 Doctor Clinic Fee	0.5128	152.58	152.58	129.78	+ 0.00	+ 17.57
67 Dental Services	0.0181	113.82	113.82	108.66	+ 0.00	+ 4.75
68 Medical Tests	0.3967	137.76	136.22	120.81	+ 1.13	+ 14.03
69 Hospitals Services	1.0073	124.27	123.88	120.80	+ 0.31	+ 2.87
<i>Transport</i>	5.5580	142.07	140.80	125.65	+ 0.90	+ 13.07
70 Motor Vehicles	0.7305	127.12	126.93	112.52	+ 0.15	+ 12.98
71 Motor Vehicles Accessories	0.1572	132.66	132.02	118.33	+ 0.48	+ 12.11
72 Motor Fuels	2.4932	157.36	157.70	133.10	- 0.22	+ 18.23
73 Mechanical Services	0.3645	147.17	147.17	143.85	+ 0.00	+ 2.31
74 Motor Vehicle Tax	0.0174	127.98	127.98	108.58	+ 0.00	+ 17.87
75 Transport Services	1.7952	126.84	122.59	117.75	+ 3.47	+ 7.72
<i>Communication</i>	1.9940	104.67	104.63	102.95	+ 0.04	+ 1.67
76 Postal Services	0.0070	149.43	149.43	113.66	+ 0.00	+ 31.47
77 Communication Apparatus	0.3362	118.68	118.45	114.88	+ 0.19	+ 3.31
78 Communication Services	1.6508	101.63	101.63	100.47	+ 0.00	+ 1.15
<i>Recreation and culture</i>	1.3764	121.71	121.48	113.22	+ 0.19	+ 7.50
79 Recreation and Culture	0.4763	126.27	125.85	116.52	+ 0.33	+ 8.37
80 Text Books	0.5047	110.12	110.12	102.04	+ 0.00	+ 7.92
81 Newspapers	0.0230	161.68	161.68	161.68	+ 0.00	+ 0.00
82 Stationery	0.3724	129.11	128.80	121.16	+ 0.24	+ 6.56
<i>Education</i>	2.1342	132.56	132.50	126.26	+ 0.05	+ 4.99
83 Education	2.1342	132.56	132.50	126.26	+ 0.05	+ 4.99
<i>Restaurants and hotels</i>	6.1895	128.68	128.42	118.87	+ 0.20	+ 8.25
84 Readymade Food	3.8001	131.29	130.86	121.50	+ 0.33	+ 8.06
85 Marriage Hall Charges	2.2525	125.92	125.92	115.47	+ 0.00	+ 9.05
86 Accommodation Services	0.1369	101.59	101.59	101.59	+ 0.00	+ 0.00
<i>Misc. goods and services</i>	5.0174	131.15	130.90	117.55	+ 0.19	+ 11.57
87 Personal Grooming Services	1.5363	134.23	133.42	121.56	+ 0.61	+ 10.42
88 Appliances/Articles/Products	2.2746	117.27	116.46	109.79	+ 0.70	+ 6.81
89 Personal Effects n.e.c.	1.2065	153.37	154.92	127.10	- 1.00	+ 20.67

Annexure C: Wholesale Price Indices by Major Groups & Commodities (2015-16=100)

Item and Specification	Weight	Index Numbers			% Change in Dec 2019 over			
		Dec 19	Nov 19	Dec 18	Nov 2019	Dec 2018		
General	100.0000	141.75	142.17	126.15	-	0.30	+	12.37
Agriculture Forestry & Fisher	25.7674	139.17	141.84	121.76	-	1.88	+	14.30
001 Wheat	0.6297	124.32	119.03	102.65	+	4.44	+	21.11
002 Maize	0.6764	139.78	147.50	122.66	-	5.23	+	13.96
003 Rice	2.4413	142.81	143.16	127.46	-	0.24	+	12.04
004 Sorghum / Jowar	0.0214	140.05	133.89	113.09	+	4.60	+	23.84
005 Millet / Bajra	0.0374	118.66	118.60	117.39	+	0.05	+	1.08
006 Vegetables	1.2441	223.13	260.22	86.04	-	14.25	+	<u>159.33</u>
007 Fresh Fruits	1.5144	115.80	110.54	105.58	+	4.76	+	9.68
008 Dry Fruits	0.2478	127.00	125.18	118.29	+	1.45	+	7.36
009 Cotton Seeds	1.1511	123.02	121.55	95.59	+	1.21	+	28.70
010 Other Oil Seeds	0.0722	128.83	128.90	115.19	-	0.05	+	11.84
011 Edible Roots / Potatoes	0.2540	218.88	223.48	131.68	-	2.06	+	<u>66.22</u>
012 Stimulant & Spice Crops	0.1634	236.49	258.22	134.93	-	8.42	+	<u>75.27</u>
013 Pulses	0.4901	118.10	115.33	98.15	+	2.40	+	20.33
014 Sugar Crops	1.0725	114.58	112.02	91.51	+	2.29	+	25.21
015 Fibre Crops	5.3169	167.79	175.47	166.51	-	4.38	+	0.77
016 Unmanufactured Tobacco	0.0742	168.23	160.85	150.46	+	4.59	+	11.81
017 Poultry	0.5633	97.34	113.06	122.48	-	13.90	-	20.53
018 Raw Milk from Bovine Animals	7.0279	116.54	116.44	108.48	+	0.09	+	7.43
019 Eggs	0.5034	139.52	123.14	134.21	+	13.30	+	3.96
020 Raw Animal Materials / Wool	0.0351	105.33	105.17	106.71	+	0.15	-	1.29
021 Hides, Skins & Fur Skins, Raw	0.4834	34.97	33.37	42.35	+	4.79	-	17.43
022 Fuel Wood in Logs	0.0179	109.51	109.51	108.64	+	0.00	+	0.80
023 Fish Live Fresh or Chilled	1.7295	159.31	153.63	135.29	+	3.70	+	17.75
Ores/Minerals, Elec., Gas & W	12.0069	169.06	167.86	130.84	+	0.71	+	29.21
024 Coal not Agglomerated	0.7508	82.17	82.17	82.17	+	0.00	+	0.00
025 Natural Gas Liquified	5.7065	197.32	197.30	153.41	+	0.01	+	28.62
026 Salt & Pure Sodium Chloride	0.0584	154.91	152.67	129.29	+	1.47	+	19.82
027 Electrical Energy	5.4912	151.72	149.15	114.06	+	1.72	+	33.02
Food, Beverages, Tobacco, Textil	31.1122	130.41	130.25	117.68	+	0.12	+	10.82
Food Products, Beverages &	20.0718	124.83	124.31	110.88	+	0.42	+	12.58
028 Meat of Animals	3.4559	138.14	137.72	124.24	+	0.30	+	11.19
029 Vegetables & Fruit Juice	0.0058	112.94	112.94	118.14	+	0.00	-	4.40
030 Dried Fruits & Nuts	0.1733	152.76	151.70	138.56	+	0.70	+	10.25
031 Fruit Juices	0.3880	117.15	117.11	107.90	+	0.03	+	8.57
032 Vegetable Oils Refined	1.9242	120.24	119.66	107.30	+	0.48	+	12.06
033 Vegetable Ghee	1.5632	133.96	130.42	113.61	+	2.71	+	17.91
034 Oil Cakes	0.9611	132.20	128.47	113.28	+	2.90	+	16.70
035 Processed Liquid Milk	4.4437	123.44	123.18	113.23	+	0.21	+	9.02
036 Milk & Cream in Solid Form	0.0316	122.38	122.00	107.85	+	0.31	+	13.47
037 Ice Cream	0.0047	116.68	116.68	106.00	+	0.00	+	10.08
038 Dairy Products N.E.C	0.0117	127.97	127.97	111.84	+	0.00	+	14.42
039 Wheat Flour	2.3034	120.14	119.37	103.01	+	0.65	+	16.63
040 Other Cereal Flour	0.0604	117.37	112.58	100.70	+	4.25	+	16.55
041 Sugar Refined	1.7975	114.56	117.16	89.13	-	2.22	+	28.53
042 Chocolate	0.0139	81.57	81.57	66.51	+	0.00	+	22.64
043 Sugar Confectionary	0.0738	115.50	115.50	109.32	+	0.00	+	5.65
044 Coffee & Tea	0.7303	127.47	127.35	116.31	+	0.09	+	9.60
045 Spices	0.1449	140.42	140.54	114.27	-	0.09	+	22.88
046 Other Food Products	0.0336	110.93	110.69	107.49	+	0.22	+	3.20
047 Mineral Water	0.0207	122.36	122.18	110.90	+	0.15	+	10.33
048 Beverages	0.6303	125.00	125.00	115.70	+	0.00	+	8.04
049 Tobacco Products	1.2998	104.23	104.23	104.23	+	0.00	+	0.00
Textiles & Apparels	10.3289	142.51	143.05	131.53	-	0.38	+	8.35
050 Cotton Yarn	5.2491	165.15	166.38	151.43	-	0.74	+	9.06
051 Nylon Yarn	0.1719	95.24	95.24	95.24	+	0.00	+	0.00
052 Blended Yarn	0.1689	120.59	120.91	109.31	-	0.26	+	10.32
053 Woven Fabrics	0.0128	133.10	133.10	120.54	+	0.00	+	10.42
054 Cotton Fabrics	0.6343	116.88	116.88	106.49	+	0.00	+	9.76
055 Other Fabrics	1.1016	112.30	112.30	107.55	+	0.00	+	4.42
056 Silk & Reyon Fabrics	0.7350	117.63	117.41	111.99	+	0.19	+	5.04

Annexure C: Wholesale Price Indices by Major Groups & Commodities (2015-16=100)

Item and Specification	Weight	Index Numbers			% Change in Dec 2019 over	
		Dec 19	Nov 19	Dec 18	Nov 2019	Dec 2018
057 Towels	0.1235	117.41	117.41	110.24	+ 0.00	+ 6.50
058 Blankets	0.0029	96.44	96.44	95.81	+ 0.00	+ 0.66
059 Bed Sheets	0.0913	112.64	112.64	107.14	+ 0.00	+ 5.13
060 Quilts	0.0019	109.35	108.19	106.23	+ 1.07	+ 2.94
061 Woolen Carpets	0.0383	137.01	137.01	122.99	+ 0.00	+ 11.40
062 Synthetic Carpets	0.0566	115.72	115.72	101.85	+ 0.00	+ 13.62
063 Hosiery Products	0.8832	121.58	120.95	113.98	+ 0.52	+ 6.67
064 Readymade Garments	1.0576	130.41	130.17	117.20	+ 0.18	+ 11.27
Leather Products	0.7115	111.94	111.94	108.48	+ 0.00	+ 3.19
065 Leather Without Hair	0.2973	105.65	105.65	105.39	+ 0.00	+ 0.25
066 Other Leather N.E.C	0.2567	111.77	111.77	102.51	+ 0.00	+ 9.03
067 Footwears	0.1575	124.07	124.07	124.07	+ 0.00	+ 0.00
Other Transportable Goods	22.3979	149.35	150.58	144.71	- 0.82	+ 3.21
068 Timber	0.0165	111.96	111.75	111.17	+ 0.19	+ 0.71
069 Printing Paper	0.4279	130.70	130.70	107.74	+ 0.00	+ 21.31
070 Hard Board	0.1579	146.50	146.50	146.50	+ 0.00	+ 0.00
071 Motor Spirit	1.6268	161.27	161.64	134.77	- 0.23	+ 19.66
072 Diesel Oil	5.4849	167.67	172.41	153.43	- 2.75	+ 9.28
073 Kerosine Oil	0.2151	188.96	190.59	163.76	- 0.86	+ 15.39
074 Furnace Oil	3.2664	204.30	204.30	245.24	+ 0.00	- 16.69
075 Mobil Oil	0.7114	120.04	120.04	111.16	+ 0.00	+ 7.99
076 Chemicals	1.7720	127.75	127.51	121.51	+ 0.19	+ 5.14
077 Dyeing Material	0.1539	146.16	146.16	103.21	+ 0.00	+ 41.61
078 Fertilizers	2.8657	107.26	107.50	93.62	- 0.22	+ 14.57
079 Pesticides	0.2763	111.16	111.16	105.07	+ 0.00	+ 5.80
080 Insecticides	0.1276	111.24	111.24	109.63	+ 0.00	+ 1.47
081 Paints & Varnishes	0.1916	124.68	124.68	118.22	+ 0.00	+ 5.46
082 Medicines	1.1428	137.26	136.69	116.58	+ 0.42	+ 17.74
083 Soaps & Detergents	0.8168	109.73	109.73	107.57	+ 0.00	+ 2.01
084 Auto Tyres	0.2703	121.30	121.30	98.71	+ 0.00	+ 22.89
085 Plastic Products	0.4550	108.14	108.14	105.12	+ 0.00	+ 2.87
086 Glass sheets	0.2089	144.91	144.91	137.35	+ 0.00	+ 5.50
087 Other Glass Articles	0.1635	132.20	132.20	119.93	+ 0.00	+ 10.23
088 Ceramics & Sanitary Fixture	0.0244	123.86	123.86	113.65	+ 0.00	+ 8.98
089 Bricks, Blocks & Tiles	0.1566	119.34	120.55	110.68	- 1.00	+ 7.82
090 Cement	1.8145	111.63	112.13	114.55	- 0.45	- 2.55
091 Bed Foam	0.0006	127.14	127.14	111.32	+ 0.00	+ 14.21
092 Matches	0.0505	1170.11	1170.11	1127.37	+ 0.00	+ 3.79
Metal Product, Machinery & Eq	8.7156	132.68	128.73	115.21	+ 3.07	+ 15.16
093 Steel Bar & Sheets	1.4615	156.71	157.94	131.50	- 0.78	+ 19.17
094 Pipe Fittings	0.0780	141.32	141.32	117.12	+ 0.00	+ 20.66
095 Steel Products	0.3879	133.35	133.35	117.97	+ 0.00	+ 13.04
096 Engines & Motors	0.0046	107.29	107.29	107.29	+ 0.00	+ 0.00
097 Vacuum Pumps	0.0155	107.56	107.56	107.56	+ 0.00	+ 0.00
098 Air Conditioners	0.0049	112.46	112.46	102.84	+ 0.00	+ 9.35
099 Cultivators	0.0551	103.75	103.75	87.11	+ 0.00	+ 19.10
100 Chuff Cutter	0.1293	104.29	104.29	102.86	+ 0.00	+ 1.39
101 Tractors	0.0028	109.22	109.22	109.22	+ 0.00	+ 0.00
102 Lathe Machines	0.0525	168.06	168.06	144.32	+ 0.00	+ 16.45
103 Concrete Mixture	0.0107	100.00	100.00	100.00	+ 0.00	+ 0.00
104 Fridge,WashM,SewM,Fans,Iron	1.1645	144.57	144.56	122.33	+ 0.01	+ 18.18
105 Electric Wires	0.0912	125.73	125.73	115.52	+ 0.00	+ 8.84
106 Lighting Equipments	1.4431	110.71	110.71	106.55	+ 0.00	+ 3.90
107 Radio & Television	0.1843	100.59	100.59	96.80	+ 0.00	+ 3.92
108 Motor Vehicles	0.0244	150.63	150.63	124.29	+ 0.00	+ 21.19
109 Motorcycles	0.2570	120.09	119.59	115.97	+ 0.42	+ 3.55
110 Bicycles	3.3483	131.36	120.58	110.47	+ 8.94	+ 18.91