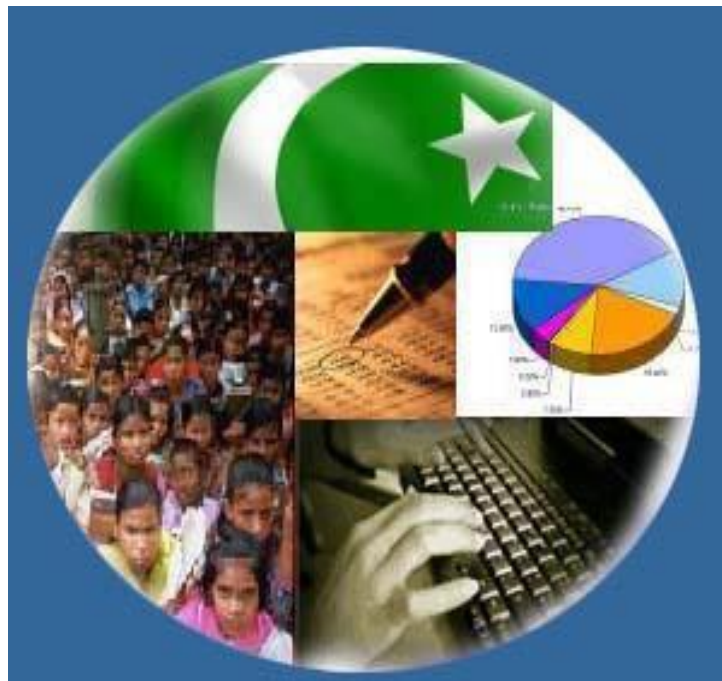




# Monthly Review on Price Indices



**November, 2019**  
**(Base Year 2015-16)**

**Government of Pakistan**  
**Ministry of Planning, Development & Reform**  
**Pakistan Bureau of Statistics**  
**Islamabad**



## Inflation in Brief

- CPI inflation General**, increased by 12.7% on year-on-year basis in November 2019 as compared to an increase of 11.0% in the previous month and 5.7% in November 2018. On month-on-month basis, it increased by 1.3% in November 2019 as compared to an increase of 1.8% in the previous month and a decrease of 0.1% in November 2018.
- CPI inflation Urban**, increased by 12.1% on year-on-year basis in November 2019 as compared to an increase of 10.9% in the previous month and 6.3% in November 2018. On month-on-month basis, it increased by 1.0% in November 2019 as compared to an increase of 1.6% in the previous month and a decrease of 0.1% in November 2018.
- CPI inflation Rural**, increased by 13.6% on year-on-year basis in November 2019 as compared to an increase of 11.3% in the previous month and 4.7% in November 2018. On month-on-month basis, it increased by 1.9% in November 2019 as compared to an increase of 2.2% in the previous month and a decrease of 0.2% in November 2018.
- SPI inflation** on YoY increased by 20.2% in November 2019 as compared to an increase of 15.1% a month earlier and an increase of 0.8% in November 2018. On MoM basis, it increased by 3.7% in November 2019 as compared to an increase of 2.7% a month earlier and a decrease of 0.7% in November 2018.
- WPI inflation** on YoY basis increased by 11.2% in November 2019 as compared to an increase of 13.3% a month earlier and an increase of 18.6% in November 2018. WPI inflation on MoM basis decreased by 0.8% in November 2019 as compared to an increase of 2.0% a month earlier and an increase of 1.0% in corresponding month of last year i.e. November 2018.
- Figures 1.a and 1.b show graphically the data of Table 1. Table 1.1 shows "Period Average" and "YoY" percent changes in indices of three years.

Table 1.a General Inflation (%) (Base 2015-16)																		
PERIOD	CPI														SPI**		WPI	
	General						Food				Non-Food							
	National		Urban		Rural		Urban		Rural		Urban		Rural		YoY	MoM	YoY	MoM
	YoY	MoM	YoY	MoM	YoY	MoM	YoY	MoM	YoY	MoM	YoY	MoM	YoY	MoM				
Oct-18	6.5	2.1	7.0	2.2	5.7	2.0	3.0	2.6	2.5	3.0	9.4	2.0	8.4	1.1	1.7	2.3	18.6	4.4
Nov-18	5.7	-0.1	6.3	-0.1	4.7	-0.2	1.7	-0.2	0.9	-0.7	9.0	0.0	8.0	0.3	0.8	-0.7	18.6	1.0
Dec-18	5.4	-0.3	5.9	-0.3	4.6	-0.3	0.6	-1.8	0.5	-1.4	9.0	0.5	8.1	0.6	1.5	-0.3	16.5	-1.3
Jan-19	5.6	0.3	6.2	0.4	4.6	0.0	2.6	0.3	1.8	0.0	8.2	0.5	7.0	0.0	3.4	0.4	12.6	-0.8
Feb-19	6.8	0.9	7.2	0.9	6.0	0.9	5.9	2.3	5.2	1.7	8.0	0.1	6.7	0.2	7.2	2.4	13.9	1.6
Mar-19	8.6	2.0	8.9	1.9	8.2	2.2	8.8	2.5	9.3	3.3	9.0	1.5	7.3	1.3	10.5	2.1	16.6	2.2
Apr-19	8.3	0.7	8.4	0.8	8.1	0.6	8.3	1.3	9.3	0.6	8.4	0.6	7.2	0.6	10.0	0.5	17.1	1.8
May-19	8.4	0.6	8.5	0.7	8.3	0.5	9.0	1.3	9.7	0.6	8.3	0.3	7.1	0.4	9.9	0.6	16.5	1.5
Jun-19	8.0	0.5	8.1	0.3	7.9	0.7	7.5	-0.3	9.1	0.7	8.4	0.7	7.0	0.7	9.3	0.9	14.0	0.2
Jul-19	8.4	1.8	8.7	2.0	7.9	1.6	7.9	1.0	9.3	1.7	9.2	2.5	6.7	1.5	8.9	1.0	13.3	3.1
Aug-19	10.5	1.6	10.6	1.5	10.3	1.9	11.9	3.1	12.6	2.9	9.9	0.5	8.4	1.1	12.1	2.7	14.1	1.2
Sep-19	11.4	0.8	11.6	0.7	11.1	0.8	15.0	2.0	15.0	1.8	9.7	0.0	8.0	0.0	14.7	1.9	15.9	0.1
Oct-19	11.0	1.8	10.9	1.6	11.3	2.2	13.7	1.4	14.6	2.6	9.3	1.7	8.7	1.8	15.1	2.7	13.3	2.0
Nov-19	12.7	1.3	12.1	1.0	13.6	1.9	16.6	2.4	19.3	3.4	9.6	0.2	9.0	0.6	20.2	3.7	11.2	-0.8

\*\* SPI for quintile 1. Digits 0.0\* are due to rounding off.

7. **Core inflation** measured by **non-food non-energy Urban CPI** (Core NFNE) increased by 7.5% on (YoY) basis in November 2019 as compared to an increase of 7.7% in the previous month and 7.7% in November 2018. On (MoM) basis, it increased by 0.3% in November 2019 as compared to increase of 0.5% in previous month, and an increase of 0.4% in corresponding month of last year i.e. November 2018.
8. **Core inflation** measured by **non-food non-energy Rural CPI** (Core NFNE) increased by 8.4% on (YoY) basis in November 2019 as compared to an increase of 8.6% in the previous month and 7.1% in November 2018. On (MoM) basis, it increased by 0.5% in November 2019 as compared to an increase of 0.7% in previous month, and an increase of 0.7% in corresponding month of last year i.e. November 2018.
9. **Core inflation**, measured by 20% weighted trimmed mean **Urban CPI** (Core Trimmed) increased by 9.5% on (YoY) basis in November 2019 as compared to 8.9% in the previous month and by 6.7% in November 2018. On (MoM) basis, it increased by 0.4% in November 2019 as compared to an increase of 0.5% in the previous month and an increase of 0.3% in corresponding month of last year i.e. November 2018.
10. **Core inflation**, measured by 20% weighted trimmed mean **Rural CPI** (Core Trimmed) increased by 10.7% on (YoY) basis in November 2019 as compared to 9.4% in the previous month and by 6.3% in November 2018. On (MoM) basis, it increased by 0.7% in November 2019 as compared to an increase of 0.7% in the previous month and an increase of 0.5% in corresponding month of last year i.e. November 2018.

**Table 1.b Core Inflation (%) (Base 2015-16)**

Period	NFNE				Trimmed			
	Urban		Rural		Urban		Rural	
	YoY	MoM	YoY	MoM	YoY	MoM	YoY	MoM
Oct-18	7.5	1.2	6.7	1.0	7.1	1.1	6.7	0.9
Nov-18	7.7	0.4	7.1	0.7	6.7	0.3	6.3	0.5
Dec-18	7.8	0.4	7.4	0.5	6.8	0.3	6.6	0.4
Jan-19	7.1	0.7	6.6	0.2	6.7	0.6	6.1	0.4
Feb-19	7.1	0.2	6.4	0.2	6.7	0.2	6.2	0.3
Mar-19	7.2	0.8	6.5	0.6	7.3	0.8	6.5	0.6
Apr-19	7.0	1.1	6.8	1.2	7.4	1.1	7.3	0.8
May-19	7.2	0.5	6.8	0.4	7.3	0.5	7.2	0.5
Jun-19	7.3	0.2	6.7	0.3	7.3	0.4	7.2	0.7
Jul-19	8.2	1.8	7.8	2.0	7.8	1.4	7.4	1.6
Aug-19	8.5	0.4	8.8	1.0	8.5	0.6	8.7	1.2
Sep-19	8.4	0.4	8.8	0.3	9.3	0.6	9.6	0.6
Oct-19	7.7	0.5	8.6	0.7	8.9	0.5	9.4	0.7
Nov-19	7.5	0.3	8.4	0.5	9.5	0.4	10.7	0.7

**Table 1.1 Period Average and YoY % Change**

INDEX	Average July- November % changes			November over November % changes		
	2019-2020	2018-2019	2017-2018	2019-2020	2018-2019	2017-2018
<b>CPI (National)</b>	10.80	6.07	4.56	12.67	5.66	5.03
<b>CPI(Urban)</b>	10.77	6.37	5.07	12.06	6.28	5.43
<b>CPI(Rural)</b>	10.84	5.65	3.80	13.61	4.73	4.42
<b>SPI</b>	14.22	1.99	3.21	20.22	0.82	4.11
<b>WPI</b>	13.52	16.99	2.91	11.19	18.62	4.23

Figure 1: UCPI Inflation YoY, Special Indices

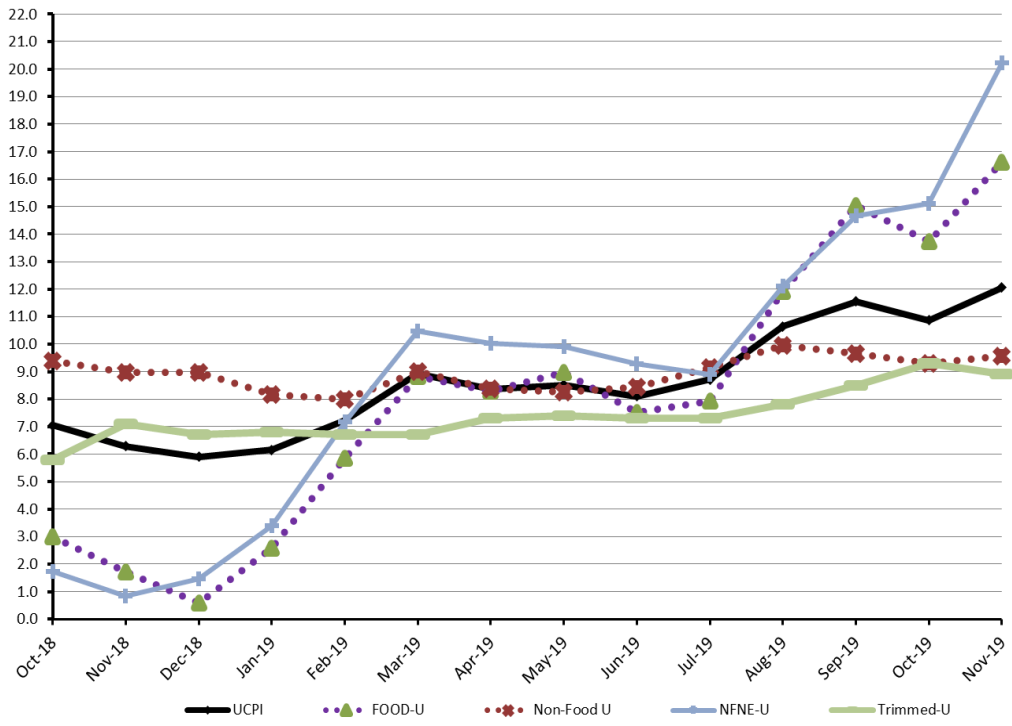
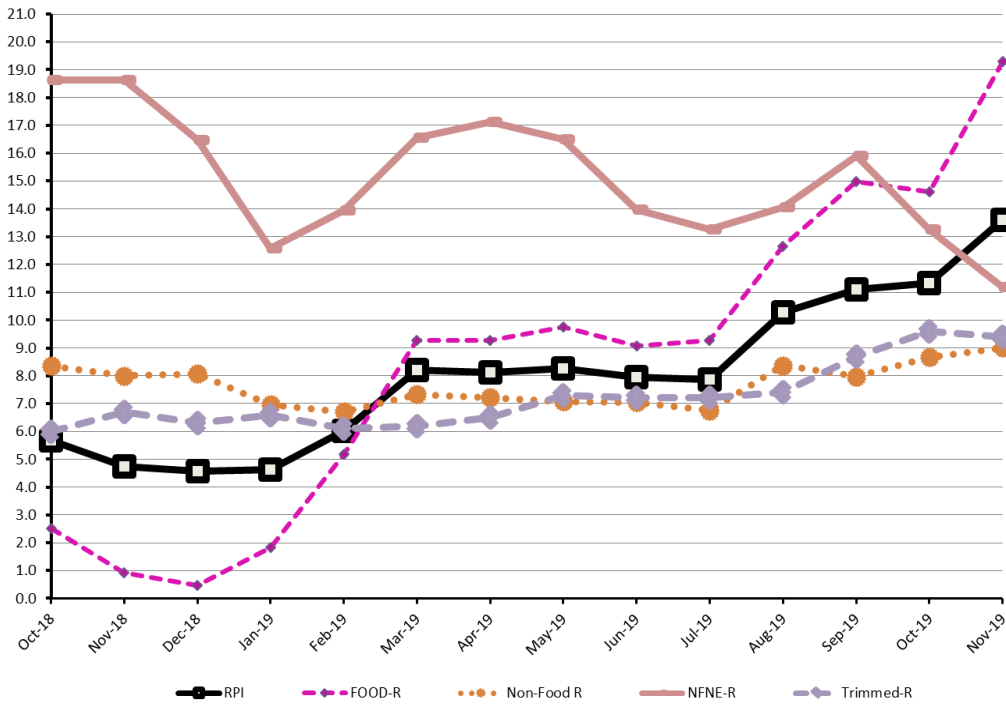


Figure 2: RCPI Inflation YoY, Special Indices



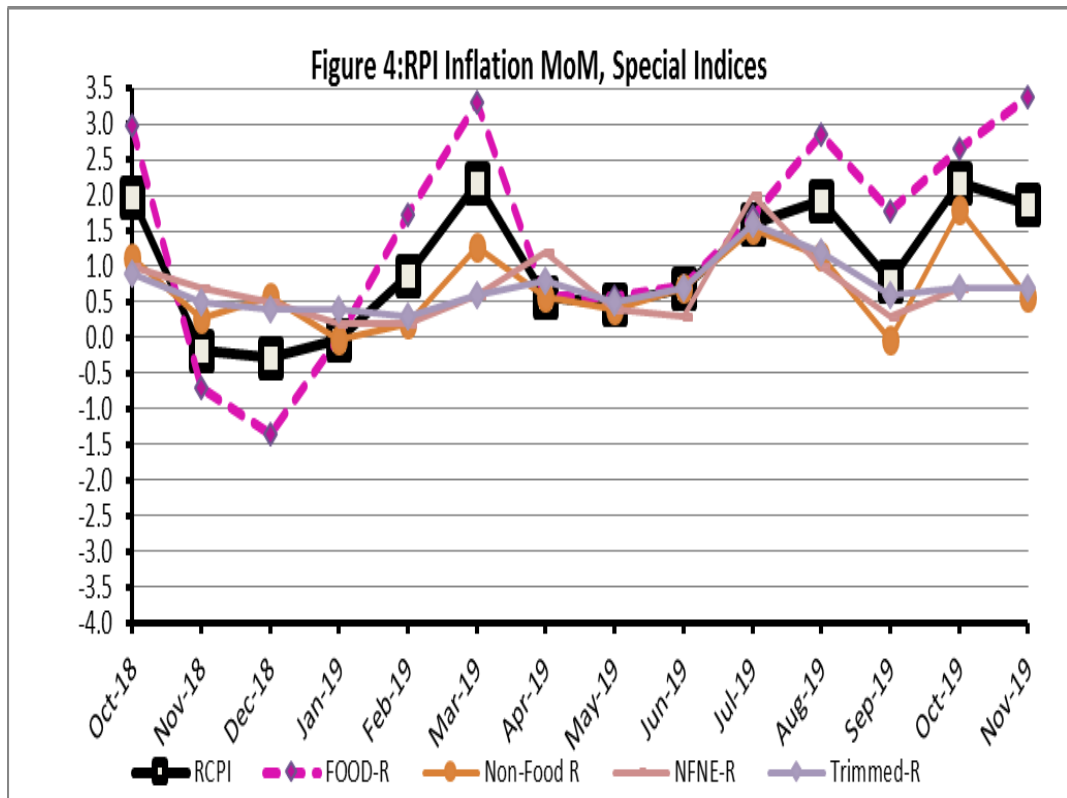
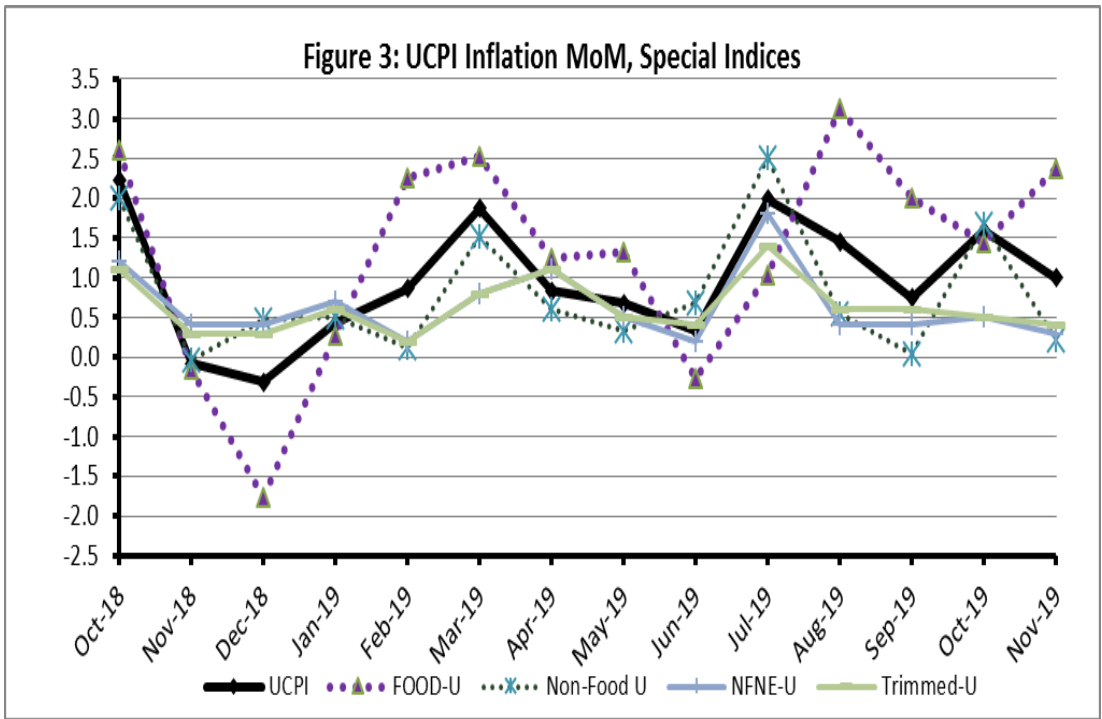


Figure 5: CPI Y.o.Y (National, Urban, Rural)

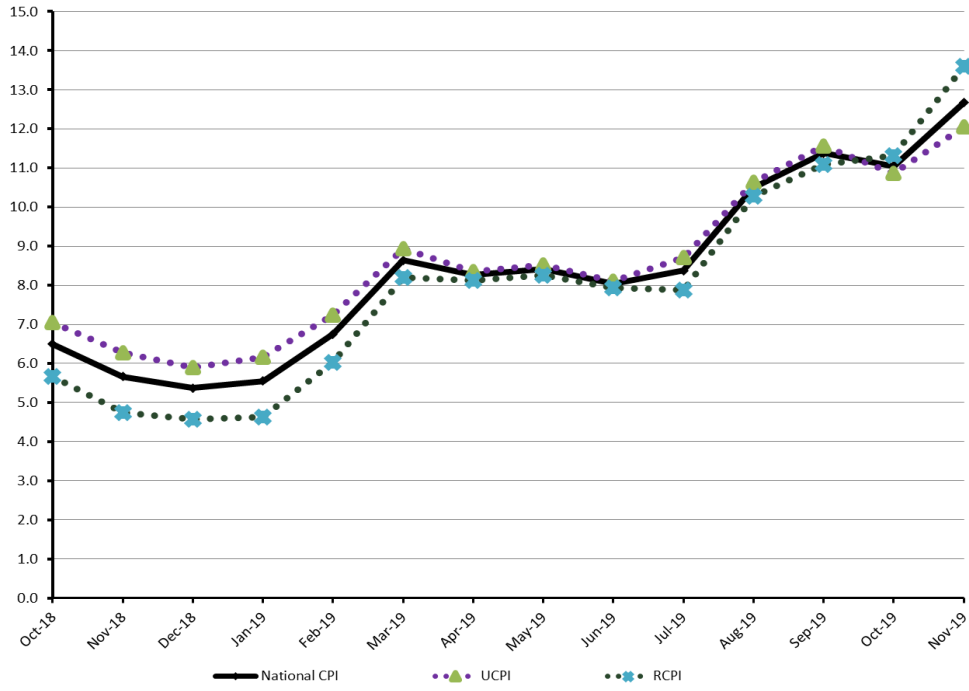
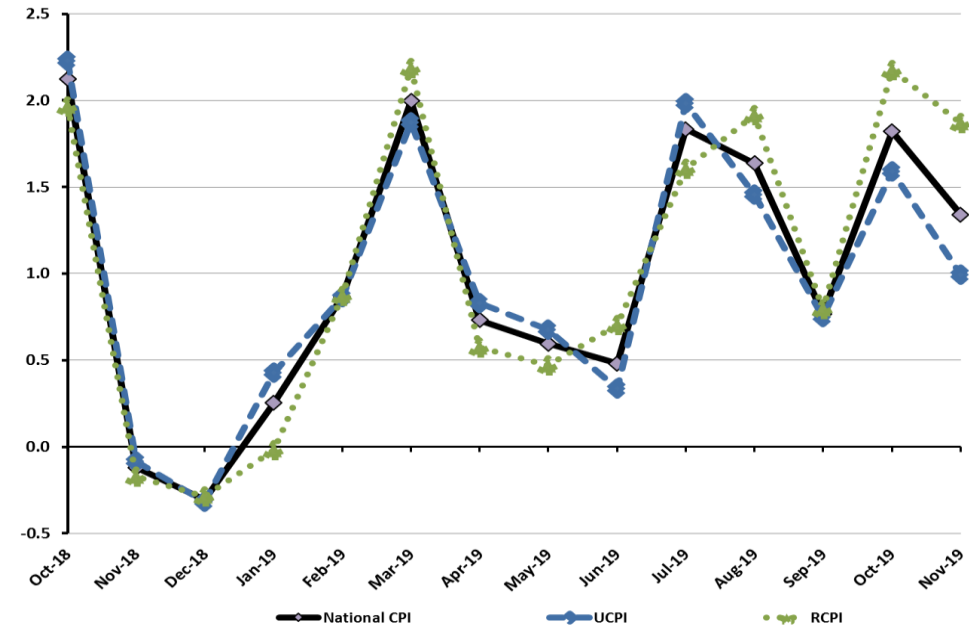


Figure 6: CPI M.o.M (National, Urban, Rural)



## I. National Consumer Price Index (N-CPI)

The **National Consumer Price Index** of November 2019 is increased by 1.34% over October 2019 and increased by 12.67% over corresponding month of the last year i.e. November 2018.

**Table 1 : Consumer Price Index (National) by Group of Commodities and Services (Base 2015-16)**

No	Group	Group Weight (%)	Indices			% Change November 2019 Over		Impact (In % points) Nov 2019 Over	
			Nov 2019	Oct 2019	Nov 2018	Oct 2019	Nov 2018	Oct 2019	Nov 2018
	<b>General</b>	<b>100.00</b>	130.90	129.16	116.18	1.34	12.67	1.34	12.67
1.	Food & Non-alcoholic Bev.	34.58	132.57	128.46	111.03	3.20	19.40	1.10	6.41
	<i>Non-perishable Food Items</i>	<i>29.60</i>	<i>124.71</i>	<i>122.77</i>	<i>111.93</i>	<i>1.57</i>	<i>11.41</i>	<i>0.44</i>	<i>3.25</i>
	<i>Perishable Food Items</i>	<i>4.99</i>	<i>179.25</i>	<i>162.24</i>	<i>105.65</i>	<i>10.48</i>	<i>69.66</i>	<i>0.66</i>	<i>3.16</i>
2.	Alcoholic Bev.& Tobacco	1.02	135.44	134.97	114.14	0.35	18.67	0.00	0.19
3.	Clothing & Footwear	8.60	127.94	126.72	116.98	0.96	9.37	0.08	0.81
4.	Housing, Water, Electricity, Gas & Fuels	23.63	129.43	129.38	118.95	0.03	8.81	0.01	2.13
5.	Furnishing & Household Equipment Maintenance	4.10	125.04	123.99	112.81	0.84	10.84	0.03	0.43
6.	Health	2.79	135.99	134.87	122.08	0.83	11.39	0.02	0.33
7.	Transport	5.91	142.55	141.90	125.10	0.46	13.95	0.03	0.89
8.	Communication	2.21	106.78	106.73	102.71	0.05	3.95	0.00	0.08
9.	Recreation & Culture	1.59	118.64	118.45	111.08	0.16	6.80	0.00	0.10
10.	Education	3.79	141.91	141.75	133.72	0.11	6.12	0.00	0.27
11.	Restaurants & Hotels	6.92	126.19	125.44	118.61	0.60	6.39	0.04	0.45
12.	Miscellaneous	4.87	131.48	131.01	117.61	0.35	11.79	0.02	0.58



## II. Urban Consumer Price Index (UCPI)

The **Urban Consumer Price Index** of November 2019 is increased by 1.00% over October 2019 and increased by 12.07% over corresponding month of the last year i.e. November 2018.

**Table 2 : Consumer Price Index (Urban) by Group of Commodities and Services (Base 2015-16)**

No	Group	Group Weight (%)	Indices			% Change November 2019 Over		Impact (In % points) Nov 2019 Over	
			Nov 2019	Oct 2019	Nov 2018	Oct 2019	Nov 2018	Oct 2019	Nov 2018
	General	<b>100.00</b>	131.05	129.75	116.94	1.00	12.07	1.00	12.07
1.	Food & Non-alcoholic Bev.	30.42	131.67	128.09	111.05	2.79	18.57	0.84	5.36
	Non-perishable Food Items	25.97	124.04	122.40	111.91	1.34	10.84	0.33	2.69
	Perishable Food Items	4.46	176.14	161.24	106.08	9.24	66.04	0.51	2.67
2.	Alcoholic Bev.& Tobacco	0.85	142.63	142.53	122.22	0.07	16.70	0.00	0.15
3.	Clothing & Footwear	8.01	125.23	124.17	114.83	0.85	9.06	0.07	0.71
4.	Housing, Water, Electricity, Gas & Fuels	27.03	131.21	131.37	119.68	-0.12	9.63	-0.03	2.66
5.	Furnishing & Household Equipment Maintenance	4.09	125.70	124.64	113.01	0.85	11.23	0.03	0.44
6.	Health	2.31	136.36	135.68	123.37	0.50	10.53	0.01	0.26
7.	Transport	6.14	143.60	142.96	124.87	0.45	15.00	0.03	0.98
8.	Communication	2.35	107.98	107.96	102.71	0.02	5.13	0.00	0.11
9.	Recreation & Culture	1.73	117.14	116.89	110.00	0.21	6.49	0.00	0.11
10.	Education	4.88	144.63	144.43	136.01	0.14	6.34	0.01	0.36
11.	Restaurants & Hotels	7.41	124.95	124.31	118.72	0.51	5.25	0.04	0.39
12.	Miscellaneous	4.77	131.88	131.58	118.80	0.23	11.01	0.01	0.53

Main contributors to month-on-month and year-on-year percentage changes are given below and detail is given in Annexure A.

**1. MONTH-ON-MONTH** Top few commodities which varied from previous month are given below: -

**Food Items Increased:** Tomatoes(149.41%), Pulse mash(11.72%), Pulse moong (7.79%), Wheat(6.86%), Potatoes(6.72%), Wheat flour (4.74%), Beans(4.53%), Onions(3.82%), Dry fruits(3.22%), Pulse masoor(2.66%), Mustard oil(2.49%), Pulse gram(1.94%), Milk fresh (1.42%), Cooking oil(1.2%), Fish(1.17%), Gram whole (1.04%), and Vegetable ghee(1.00%).

**Decreased:** Fresh vegetables(11.52%), Chicken (2.28%), Sugar(1.18%) and Fresh fruits(1.03%).

**Non-food Items Increased:** Woolen readymade garments(3.62%), Woolen cloth(3.15%) and Construction wage rates(1.08%).

**Decreased:** Electricity charges (0.93%) and Liquefied Hydrocarbons (0.47%).

**YEAR-ON-YEAR:** Top few commodities which varied from previous year i.e. November 2018 are given below:-

**Food Items Increased:** Tomatoes(436.88%), Onions(156.06%), Pulse moong (54.03%), Potatoes(42.40%), Pulse mash(41.6%), Fresh vegetables(40.36%), Sugar(33.46%), Butter(31.65%), Gur(30.12%), Condiments and Spices(19.24%), Tea(16.98%), Vegetable ghee(16.59%), Wheat flour (16.19%), Cooking oil(15.61%), Pulse masoor(15.51%), Wheat(15.34%), Meat(13.4%), Pulse gram(12.14%) and Milk powder (11.21%).

**Decreased:** Chicken (15.00%) and Eggs (7.91%).

**Non-food Items Increased:** Gas charges(54.84%), Cigarettes (21.97%), Electricity charges(18.48%), Motor vehicles(17.51%), Construction input items(17.48%), Motor fuel(16.23%), Motor vehicle accessories(14.38%), Cotton cloth(12.73%), Transport services(12.12%) and Doctor (MBBS) clinic fee(11.16%).

### III. Rural Consumer Price Index (RCPI)

The Rural Consumer Price Index of November 2019 is increased by 1.86% over October 2019 and increased by 13.60% over corresponding month of the last year i.e. November 2018.

**Table 3 : Consumer Price Index (Rural) by Group of Commodities and Services (Base 2015-16)**

No	Group	Group Weight (%)	Indices			% Change November 2019 Over		Impact (In % points) Nov 2019 Over	
			Nov 2019	Oct 2019	Nov 2018	Oct 2019	Nov 2018	Oct 2019	Nov 2018
	<b>General</b>	<b>100.00</b>	130.67	128.28	115.03	1.86	13.60	1.86	13.60
1.	Food & Non-alcoholic Bev.	40.87	133.58	128.88	111.00	3.65	20.34	1.50	8.02
	Non-perishable Food Items	35.08	125.45	123.19	111.96	1.83	12.05	0.62	4.11
	Perishable Food Items	5.79	182.86	163.41	105.16	11.90	73.89	0.88	3.91
2.	Alcoholic Bev.& Tobacco	1.28	128.20	127.34	105.99	0.68	20.95	0.01	0.25
3.	Clothing & Footwear	9.48	131.40	129.97	119.72	1.10	9.76	0.11	0.96
4.	Housing, Water, Electricity, Gas & Fuels	18.49	125.49	125.00	117.34	0.39	6.95	0.07	1.31
5.	Furnishing & Household Equipment Maintenance	4.10	124.04	123.02	112.51	0.83	10.25	0.03	0.41
6.	Health	3.51	135.62	134.07	120.80	1.16	12.27	0.04	0.45
7.	Transport	5.56	140.80	140.13	125.47	0.48	12.22	0.03	0.74
8.	Communication	1.99	104.63	104.53	102.72	0.10	1.86	0.00	0.03
9.	Recreation & Culture	1.38	121.48	121.40	113.14	0.07	7.37	0.00	0.10
10.	Education	2.13	132.50	132.50	125.80	0.00	5.33	0.00	0.12
11.	Restaurants & Hotels	6.19	128.42	127.47	118.40	0.75	8.46	0.05	0.54
12.	Miscellaneous	5.02	130.90	130.20	115.90	0.54	12.94	0.03	0.65

Main contributors to month-on-month and year-on-year percentage changes are given below and detail is given in Annexure A.

**1. MONTH-ON-MONTH** Top few commodities which varied from previous month are given below: -

**Food Items Increased:** Tomatoes(189.67%), Onions(13.83%), Wheat(10.85%), Pulse Moong(8.55%), Beans(6.24%), Wheat Flour(6.15%), Fresh fruits(4.68%), Potatoes(4.43%), Pulse Masoor(3.89%), Dry fruits(3.05%), Gram Whole(1.48%), Eggs(1.31%), Fish(1.3%), Readymade Food(1.19%), Rice(1.02%) and Pulse Gram(1.01%).

**Decreased:** Fresh Vegetables(14.45%), Gur(6.71%), Sugar(1.37%) and Chicken(0.98%).

**Non-food Items Increased:** Cotton Cloth(2.58%), Woolen Readymade Garments(2.52%), Construction Input Items(2.13%), Solid Fuel(2.02%), Medical Tests(1.72%), Household Textiles(1.31%) and Doctor Clinic Fee(1.21%).

**Decreased:** Electricity Charges(0.93%).

**YEAR-ON-YEAR:** Top few commodities which varied from previous year i.e. November 2018 are given below:-

**Food Items Increased:** Tomatoes(388.89%), Onions(166.53%), Pulse Moong(60.31%), Potatoes(44.87%), Fresh Vegetables(41.97%), Pulse Mash(37.71%), Sugar(33.3%), Gur(33.24%), Wheat(20.11%), Cooking oil(19.58%), Wheat Flour(19.03%), Vegetable ghee(17.07%), Beans(16.81%), Tea(15.94%), Pulse Masoor(15.44%), Fish(14.22%), Fresh fruits(13.2%), Milk powder(12.74%), Pulse Gram(12.1%) and Meat(11.64%).

**Decreased:** Chicken(12.35%) and Eggs(5.62%).

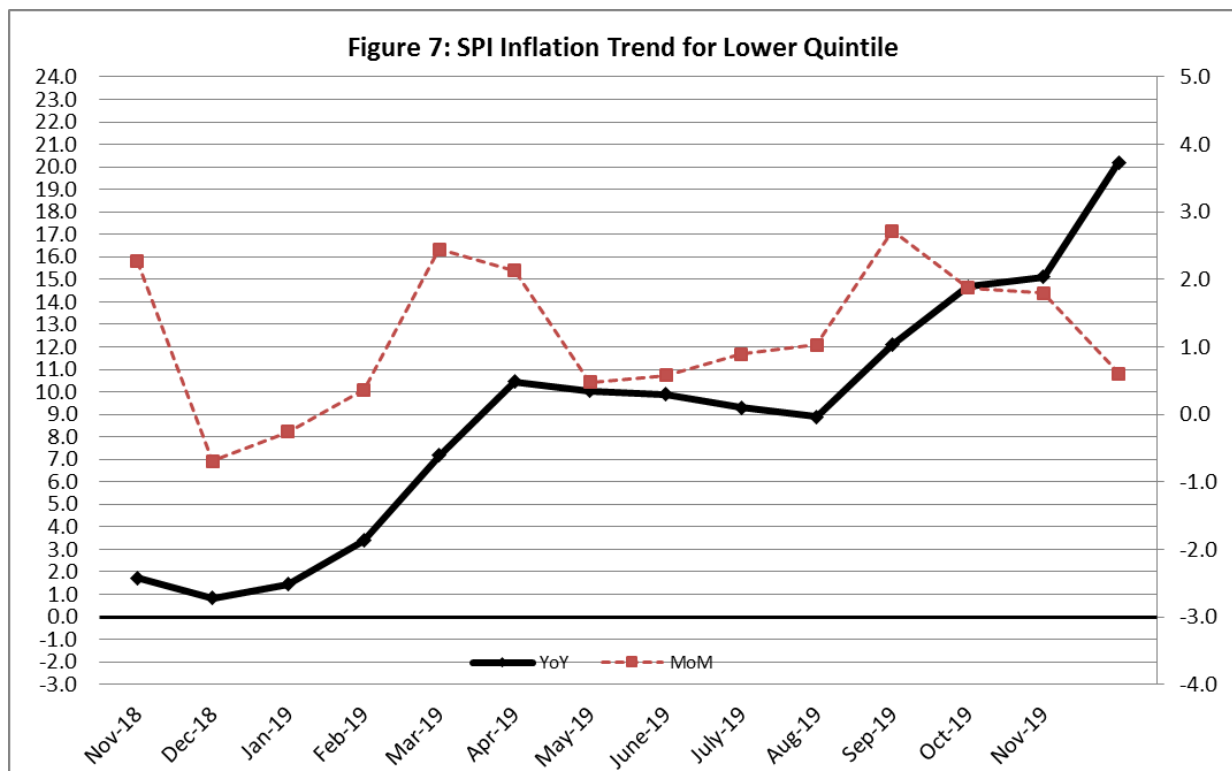
**Non-food Items Increased:** Doctor Clinic Fee(19.65%), Electricity Charges(18.48%), Motor Fuels(16.36%), Motor Vehicles Accessories(15.32%), Motor Vehicles(15.21%), Medical Tests(13.95%), Cotton Cloth(13.48%), Construction Wage Rates(10.94%), Readymade Garments(10.89%) and Woolen Cloth(10.18%).

#### IV. Sensitive Price Indicator

Quintile-wise percentage changes YoY and MoM are given below in Table 3. The series from November 2018 to November 2019 is also graphed below in Figure 7.

Table 4: Sensitive Price Indicator (Base 2015-16)					
Quintiles	Indices			% Change November 2019 Over	
	November 2019	October 2019	November 2018	October 2019	November 2018
1	136.83	131.93	113.82	3.71	20.22
2	132.35	127.55	109.63	3.76	20.72
3	133.56	129.56	108.85	3.09	22.70
4	130.30	126.81	107.41	2.75	21.31
5	133.30	130.36	112.72	2.26	18.26
Combined	132.02	128.50	110.52	2.74	19.45

Table 4.1 : Weekly Percentage Change of SPI During November-19				
Quintiles	% Change with Previous week			
	07-11-2019	14-11-2019	21-11-2019	28-11-2019
Quintile 1	0.8	1.68	0.35	-0.90
Combined	0.57	1.09	0.22	-0.72



## V. Wholesale Price Index

The Wholesale Price Index for November, 2019 decreased by 0.82% over October 2019. It increased by 11.19% over the corresponding month of the last year. YoY and MoM movements, from October, 2018 to November, 2019 are also graphed below in Figure 4.

**Table 5 : Wholesale Price Index by Group of Commodities (Base 2015-16)**

No.	Group	Group Weight (%)	Indices			% Change November 2019 Over		Impact (In % points) Nov 2019 Over	
			Nov 2019	Oct 2019	Nov 2018	Oct 2019	Nov 2018	Oct 2019	Nov 2018
	<b>General</b>	100.00	142.17	143.34	127.86	-0.82	11.19	-0.82	11.19
1.	Agriculture, Forestry & Fishery Products	25.77	141.84	139.75	122.81	1.50	15.50	0.38	3.84
2.	Ores & Minerals, Electricity, Gas & Water	12.01	167.86	167.86	129.47	0.00	29.65	0.00	3.61
3.	Food Products, Beverages & Tobacco, Textiles, Apparel & Leather Products	31.11	130.25	128.49	116.55	1.37	11.75	0.38	3.33
	i. Food Products, Bev. & Tobacco	124.31	123.72	110.43	0.48	12.57	0.08	2.18	2.15
	ii. Textiles and Apparel	143.05	138.92	129.01	2.97	10.88	0.30	1.13	0.94
	iii. Leather Products	111.94	111.94	108.48	0.00	3.19	0.00	0.02	0.03
4.	Other Transportable Goods except Metal Products, Machinery & Equipment	22.40	150.58	160.85	153.38	-6.38	-1.83	-1.60	-0.49
5.	Metal Products, Machinery & Equipment	8.72	128.73	128.21	115.34	0.41	11.61	0.03	0.91

Main contributors to month-on-month and year-on-year percentage changes are given below and detail is given in Annexure B.

- MONTH-ON-MONTH** Top few commodities which varied from previous month i.e. October, 2019 are given below: -

**Increased:** Eggs(23.68%), Vegetables(16.46%), Electrical Energy(13.96%), Woolen Carpets(9.23%), Synthetic Carpets(9.21%), Hides, Skins & Fur Skins, Raw(9.06%), Bed Foam(7.35%), Dyeing Material(6.87%), Fibre Crops(6.01%), Bed Sheets(5.53%), Edible Roots / Potatoes(5.04%), Quilts(3.35%), Furnace Oil(3.34%), Pulses(3.1%), Towels(2.87%), Vegetables & Fruit Juice(2.78%), Wheat Flour(2.22%) and Meat of Animals(1.62%).

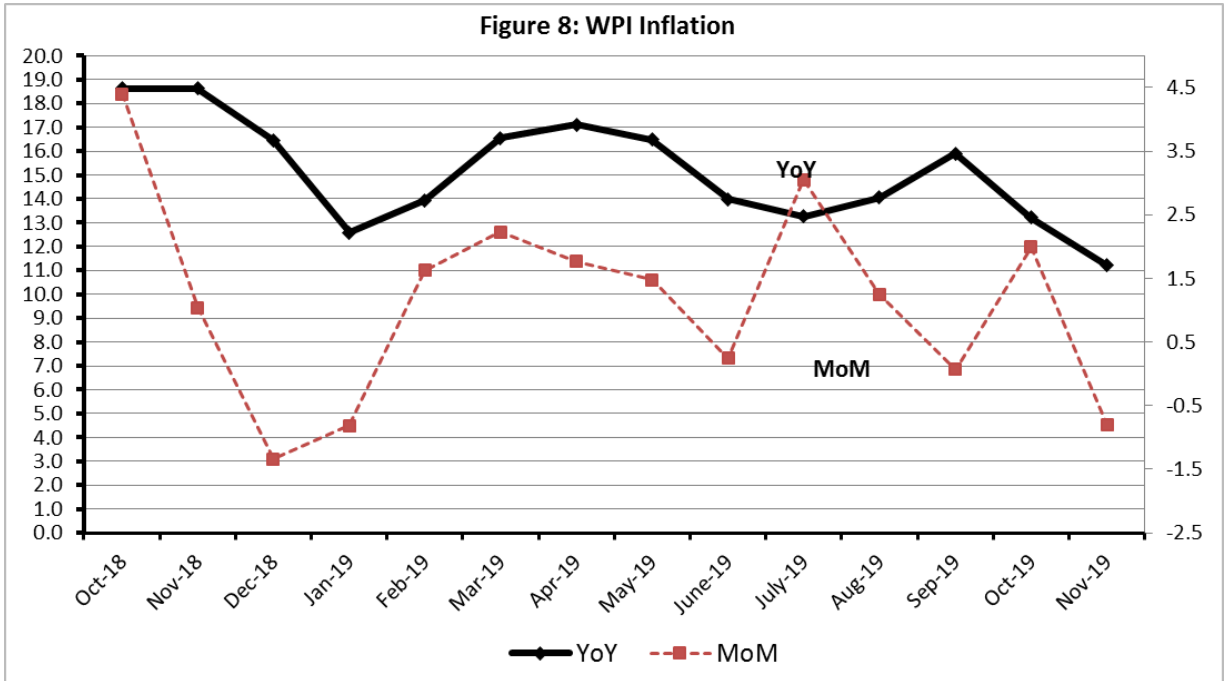
**Decreased:** Poultry(19.54%), Fresh Fruits(6.31%), Maize(5.33%), Millet / Bajra(5.33%), Steel Bar & Sheets(2.43%), Sorghum / Jowar(2.24%) and Blended Yarn(1.88%).

- YEAR-ON-YEAR** Top few commodities which varied from previous year i.e. November, 2018 are given below: -

**Increased:** Stimulant & Spice Crops(72.24%), Vegetables(70.23%), Edible Roots / Potatoes(65.54%), Sorghum / Jowar(63.46%), Dyeing Material(41.61%), Sugar Refined(35.56%), Lathe Machines(30.23%), Natural Gas Liquefied(28.35%), Sugar Crops(27.27%), Cotton Seeds(25.86%), Electrical Energy(25.01%), Spices(24.42%), Auto Tyres(23.25%), Motor Spirit(22.68%), Motor Vehicles(22.65%), Pipe Fittings(20.66%), Diesel Oil(20.37%), Kerosene Oil(19.24%), Fertilizers(18.62%), Steel Bar & Sheets(17.95%), Vegetable Ghee(17.7%), Medicines(16.57%), Readymade Garments(15.5%), Pulses(14.9%), Rice(14.33%), Bed Foam(14.21%), Printing Paper(14.02%), Synthetic Carpets(13.62%), Silk & Reyon Fabrics(13.55%), Sugar Confectionary(13.25%), Wheat Flour(12.73%), Other Cereal Flour(12.62%), Vegetable Oils Refined(12.52%), Steel Products(12.2%), Coffee & Tea(11.88%), Glass sheets(11.78%), Maize(11.71%), Oil Cakes(11.48%), Woolen Carpets(11.4%), Dried Fruits & Nuts(11.31%), Mobil Oil(11.04%), Meat of Animals(10.85%) and Cotton Yarn(10.42%).

**Decreased:** Hides, Skins & Fur Skins, Raw(20.74%), Millet / Bajra(8.53%) and Furnace Oil(6.97%).

Figure 8: WPI Inflation



**Annexure A:CPI (Urban) Index Numbers by Commodity Groups & Commodities (2015-16=100)**

Item and Specification	Weight	Index Numbers			% Change in Nov 2019 over	
		Nov 19	Oct 19 18	Nov	Oct 2019	Nov 2018
<b>General</b>	<b>100.0000</b>	<b>131.05</b>	<b>129.75</b>	<b>116.94</b>	<b>+ 1.00</b>	<b>+ 12.07</b>
<b>Food and non-alcoholic Bevera</b>	<b>30.4215</b>	<b>131.67</b>	<b>128.09</b>	<b>111.05</b>	<b>+ 2.79</b>	<b>+ 18.57</b>
01 Wheat	0.6120	119.13	111.48	103.29	+ 6.86	+ 15.34
02 Wheat flour	3.0075	118.97	113.59	102.39	+ 4.74	+ 16.19
03 Wheat products	0.0936	119.60	114.87	104.20	+ 4.12	+ 14.78
04 Besan	0.0830	114.77	111.15	101.74	+ 3.26	+ 12.81
05 Rice	1.1804	129.01	128.37	122.97	+ 0.50	+ 4.91
06 Bakery and confectionary	0.4770	122.36	120.53	107.36	+ 1.52	+ 13.97
07 Nimco	0.1224	117.77	116.71	109.13	+ 0.91	+ 7.92
08 Meat	2.0411	140.30	139.33	123.72	+ 0.70	+ 13.40
09 Chicken	1.3631	111.36	113.96	131.01	- 2.28	- 15.00
10 Fish	0.3855	124.87	123.42	111.14	+ 1.17	+ 12.35
11 Milk fresh	7.1070	120.19	118.51	110.17	+ 1.42	+ 9.10
12 Milk products	0.6407	122.90	123.45	113.22	- 0.45	+ 8.55
13 Milk powder	0.3106	123.53	123.08	111.08	+ 0.37	+ 11.21
14 Eggs	0.5083	130.72	131.87	141.95	- 0.87	- 7.91
15 Butter	0.0932	148.69	141.34	112.94	+ 5.20	+ 31.65
16 Mustard oil	0.0120	114.83	112.04	105.51	+ 2.49	+ 8.83
17 Cooking oil	1.1016	130.20	128.66	112.62	+ 1.20	+ 15.61
18 Vegetable ghee	1.0324	129.87	128.59	111.39	+ 1.00	+ 16.59
19 Dry fruits	0.3299	124.09	120.22	112.66	+ 3.22	+ 10.15
20 Fresh fruits	1.4363	108.84	109.83	100.86	- 0.90	+ 7.91
21 Pulse masoor	0.1624	89.84	87.51	77.78	+ 2.66	+ 15.51
22 Pulse moong	0.1697	115.35	107.01	74.89	+ 7.79	+ 54.03
23 Pulse mash	0.1152	85.30	76.35	60.24	+ 11.72	+ 41.60
24 Pulse gram	0.1660	111.02	108.91	99.00	+ 1.94	+ 12.14
25 Gram whohe	0.0912	120.20	118.96	116.95	+ 1.04	+ 2.78
26 Beans	0.0408	119.38	114.21	105.99	+ 4.53	+ 12.63
27 Potatoes	0.4496	190.60	178.60	133.85	+ 6.72	+ 42.40
28 Onions	0.5928	194.35	187.20	75.90	+ 3.82	+ 156.0
29 Tomatoes	0.3459	431.06	172.83	80.29	+ 149.4	+ 436.8
30 Fresh vegetables	1.5306	165.70	187.27	118.05	- 11.52	+ 40.36
31 Sugar	1.1130	117.26	118.66	87.86	- 1.18	+ 33.46
32 Gur	0.0379	126.13	126.50	96.93	- 0.29	+ 30.12
33 Honey	0.1017	116.07	116.04	109.20	+ 0.03	+ 6.29
34 Sweetmeat	0.3535	134.69	134.50	121.46	+ 0.14	+ 10.89
35 Ice cream	0.1044	123.43	123.33	110.88	+ 0.08	+ 11.32
36 Condiments and Spices	1.3340	145.46	142.81	121.99	+ 1.86	+ 19.24
37 Dessert preparation	0.0419	115.86	115.02	105.74	+ 0.73	+ 9.57
38 Tea	0.8427	140.36	140.05	119.99	+ 0.22	+ 16.98
39 Beverages	0.8906	121.70	121.60	109.58	+ 0.08	+ 11.06
<b>Alcoholic Beverages, Tobacco</b>	<b>0.8540</b>	<b>142.63</b>	<b>142.53</b>	<b>122.22</b>	<b>+ 0.07</b>	<b>+ 16.70</b>
40 Cigarettes	0.7167	134.64	134.58	110.39	+ 0.04	+ 21.97
41 Pan prepared	0.1373	184.34	184.05	183.98	+ 0.16	+ 0.20
<b>Clothing and footwear</b>	<b>8.0096</b>	<b>125.23</b>	<b>124.17</b>	<b>114.83</b>	<b>+ 0.85</b>	<b>+ 9.06</b>
42 Cotton cloth	2.2227	126.52	126.13	112.23	+ 0.31	+ 12.73
43 Woolen cloth	0.8361	119.57	115.92	109.28	+ 3.15	+ 9.42
44 Readymade garments	1.3196	126.97	126.76	120.86	+ 0.17	+ 5.06
45 Woolen readymade garments	0.4307	120.50	116.29	114.46	+ 3.62	+ 5.28
46 Tailoring	1.0741	131.54	130.52	124.73	+ 0.78	+ 5.46
47 Hosiry	0.4070	124.69	124.05	116.92	+ 0.52	+ 6.65
48 Dopatta	0.1713	119.59	115.58	110.55	+ 3.47	+ 8.18
49 Cleaning and laundering	0.0665	128.17	127.78	118.31	+ 0.31	+ 8.33
50 Footware	1.4816	122.39	122.11	109.16	+ 0.23	+ 12.12
<b>Housing, water, Elec., Gas an</b>	<b>27.0332</b>	<b>131.21</b>	<b>131.37</b>	<b>119.68</b>	<b>- 0.12</b>	<b>+ 9.63</b>
51 House rent	19.2558	127.29	127.29	121.21	+ 0.00	+ 5.02
52 Construcion input items	0.3765	140.21	138.84	119.35	+ 0.99	+ 17.48
53 Construction wage rates	0.2025	145.73	144.18	133.21	+ 1.08	+ 9.40
54 Water supply	0.5269	131.54	131.54	119.08	+ 0.00	+ 10.46
55 Garbage collection	0.1064	146.12	145.54	143.43	+ 0.40	+ 1.88
56 Electricity charges	4.5562	125.72	126.90	106.11	- 0.93	+ 18.48

**Annexure A:CPI (Urban) Index Numbers by Commodity Groups & Commodities (2015-16=100)**

Item and Specification	Weight	Index Numbers			% Change in Nov 2019 over	
		Nov 19	Oct 19 18	Nov	Oct 2019	Nov 2018
57 Gas charges	1.0807	216.94	216.94	140.11	+ 0.00	+ 54.84
58 Liquified Hydrocarbons	0.5064	147.54	148.23	140.61	- 0.47	+ 4.93
59 Solid Fuel	0.4218	110.58	109.67	107.85	+ 0.83	+ 2.53
<b>Furnishing and household equi</b>	<b>4.0937</b>	<b>125.70</b>	<b>124.64</b>	<b>113.01</b>	<b>+ 0.85</b>	<b>+ 11.23</b>
60 Furniture and furnishing	0.4750	123.59	122.94	115.04	+ 0.53	+ 7.43
61 Carpets	0.0308	107.59	107.59	104.66	+ 0.00	+ 2.80
62 Household textiles	0.3420	124.17	123.48	119.44	+ 0.56	+ 3.96
63 Household equipments	1.0032	123.84	123.38	113.06	+ 0.37	+ 9.53
64 Plastic products	0.0536	115.84	115.02	110.50	+ 0.71	+ 4.83
65 Major tools & equipments	0.0084	119.10	118.31	113.25	+ 0.67	+ 5.17
66 Washing soap/detergents/match	1.4112	126.33	124.92	111.72	+ 1.13	+ 13.08
67 Household servant	0.7695	130.45	128.75	111.72	+ 1.32	+ 16.77
<b>Health</b>	<b>2.3098</b>	<b>136.36</b>	<b>135.68</b>	<b>123.37</b>	<b>+ 0.50</b>	<b>+ 10.53</b>
68 Drugs and medicines	1.0735	135.17	133.92	115.54	+ 0.93	+ 16.99
69 Therapeutic Appliances and Eq	0.0054	107.01	106.81	106.51	+ 0.19	+ 0.47
70 Doctor (MBBS) clinic fee	0.4044	161.01	160.79	144.84	+ 0.14	+ 11.16
71 Dental services	0.0156	115.64	115.47	117.06	+ 0.15	- 1.21
72 Medical tests	0.2367	123.51	122.98	117.44	+ 0.43	+ 5.17
73 Hospitals services	0.5742	127.34	127.34	125.65	+ 0.00	+ 1.35
<b>Transport</b>	<b>6.1368</b>	<b>143.60</b>	<b>142.96</b>	<b>124.87</b>	<b>+ 0.45</b>	<b>+ 15.00</b>
74 Motor vehicles	0.8097	145.35	145.23	123.69	+ 0.08	+ 17.51
75 Motor vehicle accessories	0.1941	123.72	123.67	108.17	+ 0.04	+ 14.38
76 Motor fuel	2.9088	158.91	157.58	136.72	+ 0.84	+ 16.23
77 Mechanical services	0.4290	126.30	126.20	112.73	+ 0.08	+ 12.04
78 Motor vehicle tax	0.0482	126.72	126.72	115.63	+ 0.00	+ 9.59
79 Transport services	1.7470	124.21	124.29	110.78	- 0.06	+ 12.12
<b>Communication</b>	<b>2.3536</b>	<b>107.98</b>	<b>107.96</b>	<b>102.71</b>	<b>+ 0.02</b>	<b>+ 5.13</b>
80 Postal services	0.0190	147.05	147.05	147.05	+ 0.00	+ 0.00
81 Communication apparatus	0.4524	117.50	117.36	107.48	+ 0.12	+ 9.32
82 Communication Services	1.8822	105.30	105.30	101.11	+ 0.00	+ 4.14
<b>Recreation and culture</b>	<b>1.7301</b>	<b>117.14</b>	<b>116.89</b>	<b>110.00</b>	<b>+ 0.21</b>	<b>+ 6.49</b>
83 Recreation and culture	0.6478	108.52	108.13	106.91	+ 0.36	+ 1.51
84 Text books	0.6655	117.05	117.03	106.31	+ 0.02	+ 10.10
85 Newspapers	0.0716	151.55	151.55	145.89	+ 0.00	+ 3.88
86 stationery	0.3452	126.34	125.87	115.50	+ 0.37	+ 9.39
<b>Education</b>	<b>4.8807</b>	<b>144.63</b>	<b>144.43</b>	<b>136.01</b>	<b>+ 0.14</b>	<b>+ 6.34</b>
87 Education	4.8807	144.63	144.43	136.01	+ 0.14	+ 6.34
<b>Restaurants and hotels</b>	<b>7.4050</b>	<b>124.95</b>	<b>124.31</b>	<b>118.72</b>	<b>+ 0.51</b>	<b>+ 5.25</b>
88 Readymade food	5.5235	124.89	124.12	117.16	+ 0.62	+ 6.60
89 Marriage Hall Charges	1.7514	126.09	125.79	124.12	+ 0.24	+ 1.59
90 Accommodation Services	0.1301	112.40	112.17	111.87	+ 0.21	+ 0.47
<b>Misc. goods and services</b>	<b>4.7720</b>	<b>131.88</b>	<b>131.58</b>	<b>118.80</b>	<b>+ 0.23</b>	<b>+ 11.01</b>
91 Personal Grooming Services	0.8001	123.30	123.30	116.02	+ 0.00	+ 6.27
92 Electrical Appliances for Per	0.0465	116.55	116.52	113.93	+ 0.03	+ 2.30
93 Appliances/Articles/Products	2.9807	124.46	124.00	114.56	+ 0.37	+ 8.64
94 Personal Effects n.e.c.	0.9447	163.32	163.27	134.76	+ 0.03	+ 21.19

**Annexure B:CPI (Rural) Index Numbers by Commodity Groups & Commodities (2015-16=100)**

Item and Specification	Weight	Index Numbers			% Change in Nov 2019 over	
		Nov 19	Oct 19 18	Nov	Oct 2019	Nov 2018
<b>General</b>	<b>100.0000</b>	<b>130.67</b>	<b>128.28</b>	<b>115.03</b>	<b>+ 1.86</b>	<b>+ 13.60</b>
<b>Food and non-alcoholic Bevera</b>	<b>40.8668</b>	<b>133.58</b>	<b>128.88</b>	<b>111.00</b>	<b>+ 3.65</b>	<b>+ 20.34</b>
01 Wheat	3.4736	123.35	111.28	102.70	+ 10.85	+ 20.11
02 Wheat Flour	3.4297	120.93	113.92	101.60	+ 6.15	+ 19.03
03 Wheat Products	0.1068	120.66	116.62	110.84	+ 3.46	+ 8.86
04 Besan	0.0728	115.61	112.74	107.31	+ 2.55	+ 7.73
05 Rice	1.5501	157.15	155.57	141.94	+ 1.02	+ 10.72
06 Bakery and Confectionary	0.3702	119.30	117.85	110.37	+ 1.23	+ 8.09
07 Nimco	0.0774	115.74	115.02	107.47	+ 0.63	+ 7.70
08 Meat	1.7146	139.53	139.01	124.98	+ 0.37	+ 11.64
09 Chicken	1.4641	117.35	118.51	133.89	- 0.98	- 12.35
10 Fish	0.2640	126.66	125.03	110.89	+ 1.30	+ 14.22
11 Milk fresh	10.3803	121.45	121.37	112.83	+ 0.07	+ 7.64
12 Milk products	0.9624	123.38	123.38	115.11	+ 0.00	+ 7.18
13 Milk powder	0.1062	117.70	117.62	104.40	+ 0.07	+ 12.74
14 Eggs	0.5665	127.56	125.91	135.16	+ 1.31	- 5.62
15 Butter	0.3333	122.96	122.26	113.90	+ 0.57	+ 7.95
16 Mustard oil	0.0136	120.79	120.55	111.26	+ 0.20	+ 8.57
17 Cooking oil	0.6011	135.33	134.98	113.17	+ 0.26	+ 19.58
18 Vegetable ghee	2.3764	137.03	136.41	117.05	+ 0.45	+ 17.07
19 Dry fruits	0.2496	132.03	128.12	121.56	+ 3.05	+ 8.61
20 Fresh fruits	1.4505	111.85	106.85	98.81	+ 4.68	+ 13.20
21 Pulse Masoor	0.2076	89.44	86.09	77.48	+ 3.89	+ 15.44
22 Pulse Moong	0.2510	121.82	112.22	75.99	+ 8.55	+ <u>60.31</u>
23 Pulse Mash	0.1465	85.08	78.65	61.78	+ 8.18	+ 37.71
24 Pulse Gram	0.2751	111.55	110.43	99.51	+ 1.01	+ 12.10
25 Gram Whole	0.1116	118.89	117.16	116.95	+ 1.48	+ 1.66
26 Beans	0.0896	134.05	126.18	114.76	+ 6.24	+ 16.81
27 Potatoes	0.7437	191.75	183.61	132.36	+ 4.43	+ 44.87
28 Onions	0.8965	195.10	171.39	73.20	+ 13.83	+ <u>166.5</u>
29 Tomatoes	0.5069	406.32	140.27	83.11	+ <u>189.6</u>	+ <u>388.8</u>
30 Fresh Vegetables	2.0947	167.44	195.44	117.77	- 14.33	+ 42.18
31 Sugar	2.0296	118.69	120.34	89.04	- 1.37	+ 33.30
32 Gur	0.1522	126.51	135.61	94.95	- 6.71	+ 33.24
33 Honey	0.0296	119.70	119.70	114.67	+ 0.00	+ 4.39
34 Sweetmeat	0.3967	122.69	122.46	110.64	+ 0.19	+ 10.89
35 Ice Cream	0.0568	119.50	119.50	111.73	+ 0.00	+ 6.95
36 Condiments and Spices	1.4919	128.96	125.19	112.48	+ 3.01	+ 14.65
37 Dessert Preparation	0.0133	113.54	111.98	104.90	+ 1.39	+ 8.24
38 Tea	1.2566	136.71	135.91	117.91	+ 0.59	+ 15.94
39 Beverages	0.5537	122.23	122.07	107.68	+ 0.13	+ 13.51
<b>Alcoholic Beverages, Tobacco</b>	<b>1.2786</b>	<b>128.20</b>	<b>127.34</b>	<b>105.99</b>	<b>+ 0.68</b>	<b>+ 20.95</b>
40 Cigarettes	1.2364	127.44	126.61	104.79	+ 0.66	+ 21.61
41 Pan Prepared	0.0422	150.48	148.73	141.17	+ 1.18	+ 6.59
<b>Clothing and footwear</b>	<b>9.4826</b>	<b>131.40</b>	<b>129.97</b>	<b>119.72</b>	<b>+ 1.10</b>	<b>+ 9.76</b>
42 Cotton Cloth	2.8381	142.48	138.90	125.56	+ 2.58	+ 13.48
43 Woolen Cloth	1.0959	124.28	124.04	112.80	+ 0.19	+ 10.18
44 Readymade Garments	1.1345	128.26	128.14	115.68	+ 0.09	+ 10.87
45 Woolen Readymade Garments	0.5401	122.71	119.69	118.80	+ 2.52	+ 3.29
46 Tailoring	1.2999	131.66	131.65	124.52	+ 0.01	+ 5.73
47 Hosiry	0.4322	142.69	142.35	123.55	+ 0.24	+ 15.49
48 Dopatta	0.2078	123.65	122.31	114.09	+ 1.10	+ 8.38
49 Cleaning and Laundering	0.0176	120.91	118.36	113.02	+ 2.15	+ 6.98
50 Footware	1.9165	121.58	121.11	114.24	+ 0.39	+ 6.43
<b>Housing, water, Elec., Gas an</b>	<b>18.4853</b>	<b>125.49</b>	<b>125.00</b>	<b>117.34</b>	<b>+ 0.39</b>	<b>+ 6.95</b>
51 House Rent	8.6110	126.65	126.65	121.66	+ 0.00	+ 4.10
52 Construction Input Items	0.6306	120.56	118.04	114.27	+ 2.13	+ 5.50
53 Construction Wage Rates	0.2526	143.36	142.23	129.22	+ 0.79	+ 10.94
54 Water Supply	0.0645	154.00	154.00	121.10	+ 0.00	+ 27.17
55 Garbage Collection	0.0080	132.21	132.21	130.71	+ 0.00	+ 1.15
56 Electricity Charges	3.4431	125.72	126.90	106.11	- 0.93	+ 18.48



**Annexure B:CPI (Rural) Index Numbers by Commodity Groups & Commodities (2015-16=100)**

Item and Specification	Weight	Index Numbers			% Change in Nov 2019 over	
		Nov 19	Oct 19 18	Nov	Oct 2019	Nov 2018
57 Liquefied Hydrocarbons	0.9994	136.22	135.76	132.81	+ 0.34	+ 2.57
58 Solid Fuel	4.4761	119.93	117.55	113.90	+ 2.02	+ 5.29
<b>Furnishing and household equi</b>	<b>4.1031</b>	<b>124.04</b>	<b>123.02</b>	<b>112.51</b>	<b>+ 0.83</b>	<b>+ 10.25</b>
59 Furniture and Furnishing	0.5786	124.12	123.58	114.16	+ 0.44	+ 8.72
60 Household Textiles	0.4382	122.38	120.80	113.83	+ 1.31	+ 7.51
61 Household Equipments	1.2774	130.39	129.87	118.20	+ 0.40	+ 10.31
62 Plastic Products	0.0776	133.44	133.26	120.53	+ 0.14	+ 10.71
63 Major Tools and Equipments	0.0324	113.71	113.71	111.10	+ 0.00	+ 2.35
64 Washing Soaps, Detergents and	1.6989	119.45	117.95	106.98	+ 1.27	+ 11.66
<b>Health</b>	<b>3.5141</b>	<b>135.62</b>	<b>134.07</b>	<b>120.80</b>	<b>+ 1.16</b>	<b>+ 12.27</b>
65 Drugs and Medicines	1.5792	137.70	136.02	119.07	+ 1.24	+ 15.65
66 Doctor Clinic Fee	0.5128	152.58	150.76	127.52	+ 1.21	+ 19.65
67 Dental Services	0.0181	113.82	112.95	108.66	+ 0.77	+ 4.75
68 Medical Tests	0.3967	136.22	133.92	119.54	+ 1.72	+ 13.95
69 Hospitals Services	1.0073	123.88	122.95	120.80	+ 0.76	+ 2.55
<b>Transport</b>	<b>5.5580</b>	<b>140.80</b>	<b>140.13</b>	<b>125.47</b>	<b>+ 0.48</b>	<b>+ 12.22</b>
70 Motor Vehicles	0.7305	126.93	126.59	110.17	+ 0.27	+ 15.21
71 Motor Vehicles Accessories	0.1572	132.02	131.49	114.48	+ 0.40	+ 15.32
72 Motor Fuels	2.4932	157.70	156.29	135.53	+ 0.90	+ 16.36
73 Mechanical Services	0.3645	147.17	147.17	143.85	+ 0.00	+ 2.31
74 Motor Vehicle Tax	0.0174	127.98	127.98	108.58	+ 0.00	+ 17.87
75 Transport Services	1.7952	122.59	122.64	115.13	- 0.04	+ 6.48
<b>Communication</b>	<b>1.9940</b>	<b>104.63</b>	<b>104.53</b>	<b>102.72</b>	<b>+ 0.10</b>	<b>+ 1.86</b>
76 Postal Services	0.0070	149.43	149.43	113.66	+ 0.00	+ 31.47
77 Communication Apparatus	0.3362	118.45	117.82	113.51	+ 0.53	+ 4.35
78 Communication Services	1.6508	101.63	101.63	100.47	+ 0.00	+ 1.15
<b>Recreation and culture</b>	<b>1.3764</b>	<b>121.48</b>	<b>121.40</b>	<b>113.14</b>	<b>+ 0.07</b>	<b>+ 7.37</b>
79 Recreation and Culture	0.4763	125.85	125.66	116.34	+ 0.15	+ 8.17
80 Text Books	0.5047	110.12	110.12	102.04	+ 0.00	+ 7.92
81 Newspapers	0.0230	161.68	161.68	161.68	+ 0.00	+ 0.00
82 Stationery	0.3724	128.80	128.77	121.10	+ 0.02	+ 6.36
<b>Education</b>	<b>2.1342</b>	<b>132.50</b>	<b>132.50</b>	<b>125.80</b>	<b>+ 0.00</b>	<b>+ 5.33</b>
83 Education	2.1342	132.50	132.50	125.80	+ 0.00	+ 5.33
<b>Restaurants and hotels</b>	<b>6.1895</b>	<b>128.42</b>	<b>127.47</b>	<b>118.40</b>	<b>+ 0.75</b>	<b>+ 8.46</b>
84 Readymade Food	3.8001	130.86	129.32	120.76	+ 1.19	+ 8.36
85 Marriage Hall Charges	2.2525	125.92	125.92	115.45	+ 0.00	+ 9.07
86 Accommodation Services	0.1369	101.59	101.59	101.59	+ 0.00	+ 0.00
<b>Misc. goods and services</b>	<b>5.0174</b>	<b>130.90</b>	<b>130.20</b>	<b>115.90</b>	<b>+ 0.54</b>	<b>+ 12.94</b>
87 Personal Grooming Services	1.5363	133.42	132.77	120.34	+ 0.49	+ 10.87
88 Appliances/Articles/Products	2.2746	116.46	115.83	109.19	+ 0.54	+ 6.66
89 Personal Effects n.e.c.	1.2065	154.92	154.03	122.91	+ 0.58	+ 26.04

## Annexure C: Wholesale Price Indices by Major Groups &amp; Commodities

(2015-16=100)

Item and Specification	Weight	Index Numbers			% Change in Nov 2019 over			
		Nov 19	Oct 19	Nov 18	Oct 2019	Nov 2018		
<b>General</b>	<b>100.0000</b>	<b>142.17</b>	<b>143.34</b>	<b>127.86</b>	-	<b>0.82</b>	+	<b>11.19</b>
<b>Agriculture Forestry &amp; Fisher</b>	<b>25.7674</b>	<b>141.84</b>	<b>139.75</b>	<b>122.81</b>	+	<b>1.50</b>	+	<b>15.50</b>
001 Wheat	0.6297	119.03	109.79	102.45	+	8.42	+	16.18
002 Maize	0.6764	147.50	140.18	120.46	+	5.22	+	22.45
003 Rice	2.4413	143.16	143.66	127.87	-	0.35	+	11.96
004 Sorghum / Jowar	0.0214	133.89	165.75	105.21	-	19.22	+	27.26
005 Millet / Bajra	0.0374	118.60	126.78	132.81	-	6.45	-	10.70
006 Vegetables	1.2441	260.22	252.28	102.48	+	3.15	+	<u>153.92</u>
007 Fresh Fruits	1.5144	110.54	114.91	99.86	-	3.80	+	10.69
008 Dry Fruits	0.2478	125.18	123.96	117.93	+	0.98	+	6.15
009 Cotton Seeds	1.1511	121.55	120.93	96.11	+	0.51	+	26.47
010 Other Oil Seeds	0.0722	128.90	128.10	115.20	+	0.62	+	11.89
011 Edible Roots / Potatoes	0.2540	223.48	217.35	144.33	+	2.82	+	<u>54.84</u>
012 Stimulant & Spice Crops	0.1634	258.22	246.54	143.34	+	4.74	+	<u>80.15</u>
013 Pulses	0.4901	115.33	111.21	97.37	+	3.70	+	18.45
014 Sugar Crops	1.0725	112.02	112.02	88.02	+	0.00	+	27.27
015 Fibre Crops	5.3169	175.47	167.66	168.00	+	4.66	+	4.45
016 Unmanufactured Tobacco	0.0742	160.85	160.85	147.19	+	0.00	+	9.28
017 Poultry	0.5633	113.06	115.43	132.87	-	2.05	-	14.91
018 Raw Milk from Bovine Animals	7.0279	116.44	116.63	108.47	-	0.16	+	7.35
019 Eggs	0.5034	123.14	130.33	136.10	-	5.52	-	9.52
020 Raw Animal Materials / Wool	0.0351	105.17	105.17	102.64	+	0.00	+	2.46
021 Hides, Skins & Fur Skins, Raw	0.4834	33.37	33.09	42.36	+	0.85	-	21.22
022 Fuel Wood in Logs	0.0179	109.51	108.24	108.40	+	1.17	+	1.02
023 Fish Live Fresh or Chilled	1.7295	153.63	153.56	135.44	+	0.05	+	13.43
<b>Ores/Minerals, Elec., Gas &amp; W</b>	<b>12.0069</b>	<b>167.86</b>	<b>167.86</b>	<b>129.47</b>	+	<b>0.00</b>	+	<b>29.65</b>
024 Coal not Agglomerated	0.7508	82.17	82.17	82.17	+	0.00	+	0.00
025 Natural Gas Liquified	5.7065	197.30	196.92	152.67	+	0.19	+	29.23
026 Salt & Pure Sodium Chloride	0.0584	152.67	145.71	129.29	+	4.78	+	18.08
027 Electrical Energy	5.4912	149.15	149.62	111.83	-	0.31	+	33.37
<b>Food, Beverages, Tobacco, Textil</b>	<b>31.1122</b>	<b>130.25</b>	<b>128.49</b>	<b>116.55</b>	+	<b>1.37</b>	+	<b>11.75</b>
<b>Food Products, Beverages &amp;</b>	<b>20.0718</b>	<b>124.31</b>	<b>123.72</b>	<b>110.43</b>	+	<b>0.48</b>	+	<b>12.57</b>
028 Meat of Animals	3.4559	137.72	137.44	124.24	+	0.20	+	10.85
029 Vegetables & Fruit Juice	0.0058	112.94	115.77	118.14	-	2.44	-	4.40
030 Dried Fruits & Nuts	0.1733	151.70	151.04	137.65	+	0.44	+	10.21
031 Fruit Juices	0.3880	117.11	117.09	107.90	+	0.02	+	8.54
032 Vegetable Oils Refined	1.9242	119.66	118.71	106.41	+	0.80	+	12.45
033 Vegetable Ghee	1.5632	130.42	130.87	112.38	-	0.34	+	16.05
034 Oil Cakes	0.9611	128.47	126.41	112.87	+	1.63	+	13.82
035 Processed Liquid Milk	4.4437	123.18	122.72	113.23	+	0.37	+	8.79
036 Milk & Cream in Solid Form	0.0316	122.00	121.65	106.47	+	0.29	+	14.59
037 Ice Cream	0.0047	116.68	107.34	106.00	+	8.70	+	10.08
038 Dairy Products N.E.C	0.0117	127.97	126.90	111.60	+	0.84	+	14.67
039 Wheat Flour	2.3034	119.37	115.48	102.84	+	3.37	+	16.07
040 Other Cereal Flour	0.0604	112.58	110.99	100.91	+	1.43	+	11.56
041 Sugar Refined	1.7975	117.16	119.17	87.56	-	1.69	+	33.81
042 Chocolate	0.0139	81.57	81.57	66.51	+	0.00	+	22.64
043 Sugar Confectionary	0.0738	115.50	123.81	109.32	-	6.71	+	5.65
044 Coffee & Tea	0.7303	127.35	127.19	114.27	+	0.13	+	11.45
045 Spices	0.1449	140.54	140.58	113.03	-	0.03	+	24.34
046 Other Food Products	0.0336	110.69	110.00	107.13	+	0.63	+	3.32
047 Mineral Water	0.0207	122.18	122.05	110.90	+	0.11	+	10.17
048 Beverages	0.6303	125.00	123.97	115.69	+	0.83	+	8.05
049 Tobacco Products	1.2998	104.23	104.23	104.23	+	0.00	+	0.00
<b>Textiles &amp; Apparels</b>	<b>10.3289</b>	<b>143.05</b>	<b>138.92</b>	<b>129.01</b>	+	<b>2.97</b>	+	<b>10.88</b>
050 Cotton Yarn	5.2491	166.38	162.19	148.95	+	2.58	+	11.70
051 Nylon Yarn	0.1719	95.24	95.24	95.24	+	0.00	+	0.00
052 Blended Yarn	0.1689	120.91	119.77	110.45	+	0.95	+	9.47
053 Woven Fabrics	0.0128	133.10	124.07	120.54	+	7.28	+	10.42
054 Cotton Fabrics	0.6343	116.88	109.12	104.87	+	7.11	+	11.45
055 Other Fabrics	1.1016	112.30	112.30	107.19	+	0.00	+	4.77
056 Silk & Reyon Fabrics	0.7350	117.41	117.41	103.40	+	0.00	+	13.55

## Annexure C: Wholesale Price Indices by Major Groups &amp; Commodities

(2015-16=100)

Item and Specification	Weight	Index Numbers			% Change in Nov 2019 over			
		Nov 19	Oct 19	Nov 18	Oct 2019	Nov 2018		
057 Towels	0.1235	117.41	109.46	110.24	+	7.26	+	6.50
058 Blankets	0.0029	96.44	96.44	95.37	+	0.00	+	1.12
059 Bed Sheets	0.0913	112.64	112.64	107.14	+	0.00	+	5.13
060 Quilts	0.0019	108.19	108.19	106.23	+	0.00	+	1.85
061 Woolen Carpets	0.0383	137.01	137.01	122.99	+	0.00	+	11.40
062 Synthetic Carpets	0.0566	115.72	115.72	101.85	+	0.00	+	13.62
063 Hosiery Products	0.8832	120.95	113.01	113.98	+	7.03	+	6.12
064 Readymade Garments	1.0576	130.17	123.15	112.11	+	5.70	+	16.11
<b>Leather Products</b>	<b>0.7115</b>	<b>111.94</b>	<b>111.94</b>	<b>108.48</b>	<b>+</b>	<b>0.00</b>	<b>+</b>	<b>3.19</b>
065 Leather Without Hair	0.2973	105.65	105.65	105.39	+	0.00	+	0.25
066 Other Leather N.E.C	0.2567	111.77	111.77	102.51	+	0.00	+	9.03
067 Footwears	0.1575	124.07	124.07	124.07	+	0.00	+	0.00
<b>Other Transportable Goods</b>	<b>22.3979</b>	<b>150.58</b>	<b>160.85</b>	<b>153.38</b>	<b>-</b>	<b>6.38</b>	<b>-</b>	<b>1.83</b>
068 Timber	0.0165	111.75	111.75	111.17	+	0.00	+	0.52
069 Printing Paper	0.4279	130.70	130.70	114.63	+	0.00	+	14.02
070 Hard Board	0.1579	146.50	146.50	146.50	+	0.00	+	0.00
071 Motor Spirit	1.6268	161.64	160.18	137.69	+	0.91	+	17.39
072 Diesel Oil	5.4849	172.41	179.65	160.30	-	4.03	+	7.55
073 Kerosine Oil	0.2151	190.59	195.27	169.64	-	2.40	+	12.35
074 Furnace Oil	3.2664	204.30	263.20	291.09	-	22.38	-	29.82
075 Mobil Oil	0.7114	120.04	120.04	111.16	+	0.00	+	7.99
076 Chemicals	1.7720	127.51	127.51	121.27	+	0.00	+	5.15
077 Dyeing Material	0.1539	146.16	146.16	103.21	+	0.00	+	41.61
078 Fertilizers	2.8657	107.50	107.33	93.06	+	0.16	+	15.52
079 Pesticides	0.2763	111.16	110.84	105.07	+	0.29	+	5.80
080 Insecticides	0.1276	111.24	111.24	109.20	+	0.00	+	1.87
081 Paints & Varnishes	0.1916	124.68	124.68	118.19	+	0.00	+	5.49
082 Medicines	1.1428	136.69	135.64	116.57	+	0.77	+	17.26
083 Soaps & Detergents	0.8168	109.73	109.62	106.82	+	0.10	+	2.72
084 Auto Tyres	0.2703	121.30	121.30	98.42	+	0.00	+	23.25
085 Plastic Products	0.4550	108.14	108.12	105.12	+	0.02	+	2.87
086 Glass sheets	0.2089	144.91	144.91	137.35	+	0.00	+	5.50
087 Other Glass Articles	0.1635	132.20	132.20	119.93	+	0.00	+	10.23
088 Ceramics & Sanitary Fixture	0.0244	123.86	123.82	113.65	+	0.03	+	8.98
089 Bricks, Blocks & Tiles	0.1566	120.55	119.34	111.85	+	1.01	+	7.78
090 Cement	1.8145	112.13	112.83	114.81	-	0.62	-	2.33
091 Bed Foam	0.0006	127.14	127.14	111.32	+	0.00	+	14.21
092 Matches	0.0505	1170.11	1170.11	1127.37	+	0.00	+	3.79
<b>Metal Product, Machinery &amp; Eq</b>	<b>8.7156</b>	<b>128.73</b>	<b>128.21</b>	<b>115.34</b>	<b>+</b>	<b>0.41</b>	<b>+</b>	<b>11.61</b>
093 Steel Bar & Sheets	1.4615	157.94	155.90	134.09	+	1.31	+	17.79
094 Pipe Fittings	0.0780	141.32	141.32	117.12	+	0.00	+	20.66
095 Steel Products	0.3879	133.35	133.18	117.97	+	0.13	+	13.04
096 Engines & Motors	0.0046	107.29	107.29	107.29	+	0.00	+	0.00
097 Vacuum Pumps	0.0155	107.56	107.56	107.56	+	0.00	+	0.00
098 Air Conditioners	0.0049	112.46	112.46	102.84	+	0.00	+	9.35
099 Cultivators	0.0551	103.75	87.11	87.11	+	19.10	+	19.10
100 Chuff Cutter	0.1293	104.29	104.29	102.86	+	0.00	+	1.39
101 Tractors	0.0028	109.22	109.22	109.22	+	0.00	+	0.00
102 Lathe Machines	0.0525	168.06	168.06	129.05	+	0.00	+	30.23
103 Concrete Mixture	0.0107	100.00	100.00	100.00	+	0.00	+	0.00
104 Fridge, WashM, SewM, Fans, Iron	1.1645	144.56	144.56	122.33	+	0.00	+	18.17
105 Electric Wires	0.0912	125.73	125.73	115.52	+	0.00	+	8.84
106 Lighting Equipments	1.4431	110.71	110.71	106.55	+	0.00	+	3.90
107 Radio & Television	0.1843	100.59	97.48	96.80	+	3.19	+	3.92
108 Motor Vehicles	0.0244	150.63	150.63	124.29	+	0.00	+	21.19
109 Motorcycles	0.2570	119.59	119.59	108.83	+	0.00	+	9.89
110 Bicycles	3.3483	120.58	120.58	110.47	+	0.00	+	9.15