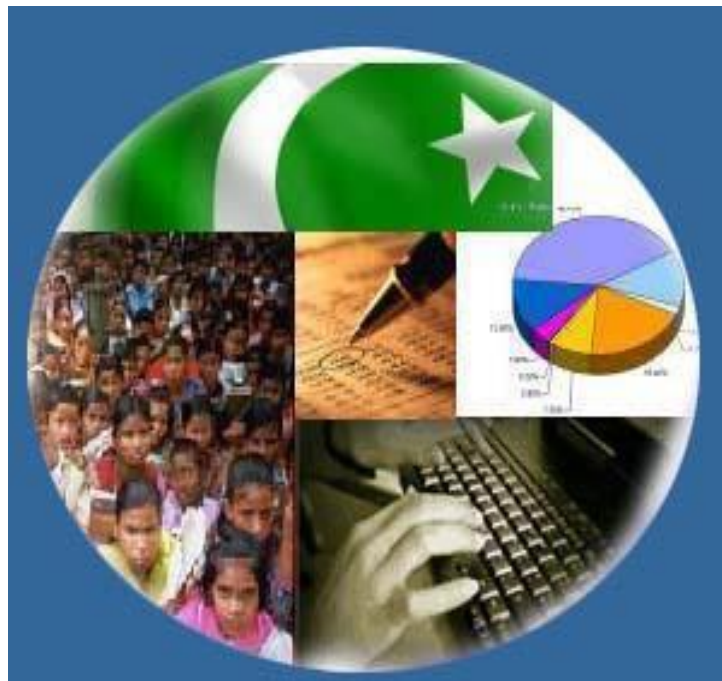




Monthly Review on Price Indices



May, 2020
(Base Year 2015-16)

Government of Pakistan
Ministry of Planning, Development & Special Initiatives
Pakistan Bureau of Statistics
Islamabad

Inflation in Brief

1. **CPI inflation General**, increased by 8.2% on year-on-year basis in May 2020 as compared to an increase of 8.5% in the previous month and 8.4% in May 2019. On month-on-month basis, it increased by 0.3% in May 2020 as compared to a decrease of 0.8% in the previous month and an increase of 0.6% in May 2019.
2. **CPI inflation Urban**, increased by 7.3% on year-on-year basis in May 2020 as compared to an increase of 7.7% in the previous month and 8.5% in May 2019. On month-on-month basis, it increased by 0.3% in May 2020 as compared to a decrease of 0.7% in the previous month and an increase of 0.7% in May 2019.
3. **CPI inflation Rural**, increased by 9.7% on year-on-year basis in May 2020 as compared to an increase of 9.8% in the previous month and 8.3% in May 2019. On month-on-month basis, it increased by 0.3% in May 2020 as compared to a decrease of 1.1% in the previous month and an increase of 0.5% in May 2019.
4. **SPI inflation** on YoY increased by 11.0% in May 2020 as compared to an increase of 9.3% a month earlier and an increase of 9.9% in May 2019. On MoM basis, it increased by 2.2% in May 2020 as compared to a decrease of 1.8% a month earlier and an increase of 0.6% in May 2019.
5. **WPI inflation** on YoY basis increased by 1.5% in May 2020 as compared to an increase of 4.9% a month earlier and an increase of 16.5% in May 2019. WPI inflation on MoM basis decreased by 2.1% in May 2020 as compared to a decrease of 2.0% a month earlier and an increase of 1.2% in corresponding month of last year i.e. May 2019.
6. Figures 1.a and 1.b show graphically the data of Table 1. Table 1.1 shows "Period Average" and "YoY" percent changes in indices of three years.

Table 1.a General Inflation (%) (Base 2015-16)																		
PERIOD	CPI														SPI**		WPI	
	General						Food				Non-Food							
	National		Urban		Rural		Urban		Rural		Urban		Rural		YoY	MoM	YoY	MoM
	YoY	MoM	YoY	MoM	YoY	MoM	YoY	MoM	YoY	MoM	YoY	MoM	YoY	MoM				
May-19	8.4	0.6	8.5	0.7	8.3	0.5	9.0	1.3	9.7	0.6	8.3	0.3	7.1	0.4	9.9	0.6	16.5	1.5
Jun-19	8.0	0.5	8.1	0.3	7.9	0.7	7.5	-0.3	9.1	0.7	8.4	0.7	7.0	0.7	9.3	0.9	14.0	0.2
Jul-19	8.4	1.8	8.7	2.0	7.9	1.6	7.9	1.0	9.3	1.7	9.2	2.5	6.7	1.5	8.9	1.0	13.3	3.1
Aug-19	10.5	1.6	10.6	1.5	10.3	1.9	11.9	3.1	12.6	2.9	9.9	0.5	8.4	1.1	12.1	2.7	14.1	1.2
Sep-19	11.4	0.8	11.6	0.7	11.1	0.8	15.0	2.0	15.0	1.8	9.7	0.0	8.0	0.0	14.7	1.9	15.9	0.1
Oct-19	11.0	1.8	10.9	1.6	11.3	2.2	13.7	1.4	14.6	2.6	9.3	1.7	8.7	1.8	15.1	2.7	13.3	2.0
Nov-19	12.7	1.3	12.1	1.0	13.6	1.9	16.6	2.4	19.3	3.4	9.6	0.2	9.0	0.6	20.2	3.7	11.2	-0.8
Dec-19	12.6	-0.3	12.0	-0.4	13.6	-0.3	16.7	-1.7	19.7	-1.1	9.5	0.4	8.8	0.4	18.1	-2.0	12.4	-0.3
Jan-20	14.6	2.0	13.4	1.7	16.3	2.4	19.5	2.7	23.8	3.4	10.2	1.1	10.5	1.5	18.3	0.5	15.4	1.8
Feb-20	12.4	-1.0	11.2	-1.1	14.2	-1.0	15.2	-1.4	19.7	-1.6	9.1	-0.9	9.8	-0.4	14.5	-0.8	12.6	-0.8
Mar-20	10.2	0.04	9.3	0.1	11.7	-0.1	13.0	0.6	15.5	-0.3	7.3	-0.1	8.5	0.1	11.8	-0.3	9.2	-0.9
Apr-20	8.5	-0.8	7.7	-0.7	9.8	-1.1	10.4	-1.0	12.9	-1.7	6.2	-0.5	7.4	-0.5	9.3	-1.8	4.9	-2.0
May-20	8.2	0.3	7.3	0.3	9.7	0.3	10.6	1.5	13.7	1.4	5.4	-0.4	6.4	-0.5	11.0	2.2	1.5	-2.1

** SPI for quintile 1. Digits 0.0* are due to rounding off.

7. **Core inflation** measured by **non-food non-energy Urban CPI** (Core NFNE) increased by 6.3% on (YoY) basis in May 2020 as compared to an increase of 6.4% in the previous month and 7.2% in May 2019. On (MoM) basis, it increased by 0.4% in May 2020 as compared to increase of 0.2% in previous month, and an increase of 0.5% in corresponding month of last year i.e. May 2019.
8. **Core inflation** measured by **non-food non-energy Rural CPI** (Core NFNE) increased by 8.4% on (YoY) basis in May 2020 as compared to an increase of 8.5% in the previous month and 6.8% in May 2019. On (MoM) basis, it increased by 0.4% in May 2020 as compared to an increase of 0.3% in previous month, and an increase of 0.4% in corresponding month of last year i.e. May 2019.
9. **Core inflation**, measured by 20% weighted trimmed mean **Urban CPI** (Core Trimmed) increased by 6.7% on (YoY) basis in May 2020 as compared to 6.7% in the previous month and by 7.3% in May 2019. On (MoM) basis, it increased by 0.4% in May 2020 as compared to a decrease of 0.2% in the previous month and an increase of 0.5% in corresponding month of last year i.e. May 2019.
10. **Core inflation**, measured by 20% weighted trimmed mean **Rural CPI** (Core Trimmed) increased by 8.9% on (YoY) basis in May 2020 as compared to 9.3% in the previous month and by 7.2% in May 2019. On (MoM) basis, it increased by 0.5% in May 2020 as compared to a decrease of 0.6% in the previous month and an increase of 0.5% in corresponding month of last year i.e. May 2019.

Table 1.b Core Inflation (%) (Base 2015-16)

Period	NFNE				Trimmed			
	Urban		Rural		Urban		Rural	
	YoY	MoM	YoY	MoM	YoY	MoM	YoY	MoM
May-19	7.2	0.5	6.8	0.4	7.3	0.5	7.2	0.5
Jun-19	7.3	0.2	6.7	0.3	7.3	0.4	7.2	0.7
Jul-19	8.2	1.8	7.8	2.0	7.8	1.4	7.4	1.6
Aug-19	8.5	0.4	8.8	1.0	8.5	0.6	8.7	1.2
Sep-19	8.4	0.4	8.8	0.3	9.3	0.6	9.6	0.6
Oct-19	7.7	0.5	8.6	0.7	8.9	0.5	9.4	0.7
Nov-19	7.5	0.3	8.4	0.5	9.5	0.4	10.7	0.7
Dec-19	7.5	0.4	8.1	0.3	9.6	0.2	10.8	0.3
Jan-20	7.9	1.1	9.0	1.0	10.3	1.2	12.7	1.9
Feb-20	8.0	0.2	9.4	0.5	9.7	0.1	12.8	0.6
Mar-20	7.4	0.3	9.4	0.6	8.7	0.3	11.4	0.1
Apr-20	6.4	0.2	8.5	0.3	6.7	-0.2	9.3	-0.6
May-20	6.3	0.4	8.4	0.4	6.7	0.4	8.9	0.5

Table 1.1 Period Average and YoY % Change

INDEX	Average July- May % changes			May over May % changes		
	2019-2020	2018-2019	2017-2018	2020	2019	2018
CPI (National)	10.94	6.69	4.60	8.22	8.42	4.98
CPI(Urban)	10.41	7.00	5.03	7.27	8.51	5.31
CPI(Rural)	11.77	6.19	3.95	9.69	8.27	4.48
SPI	13.95	4.73	2.44	10.99	9.90	1.31
WPI	11.13	16.18	4.71	1.50	16.49	8.62

Figure 1: UCPI Inflation YoY, Special Indices

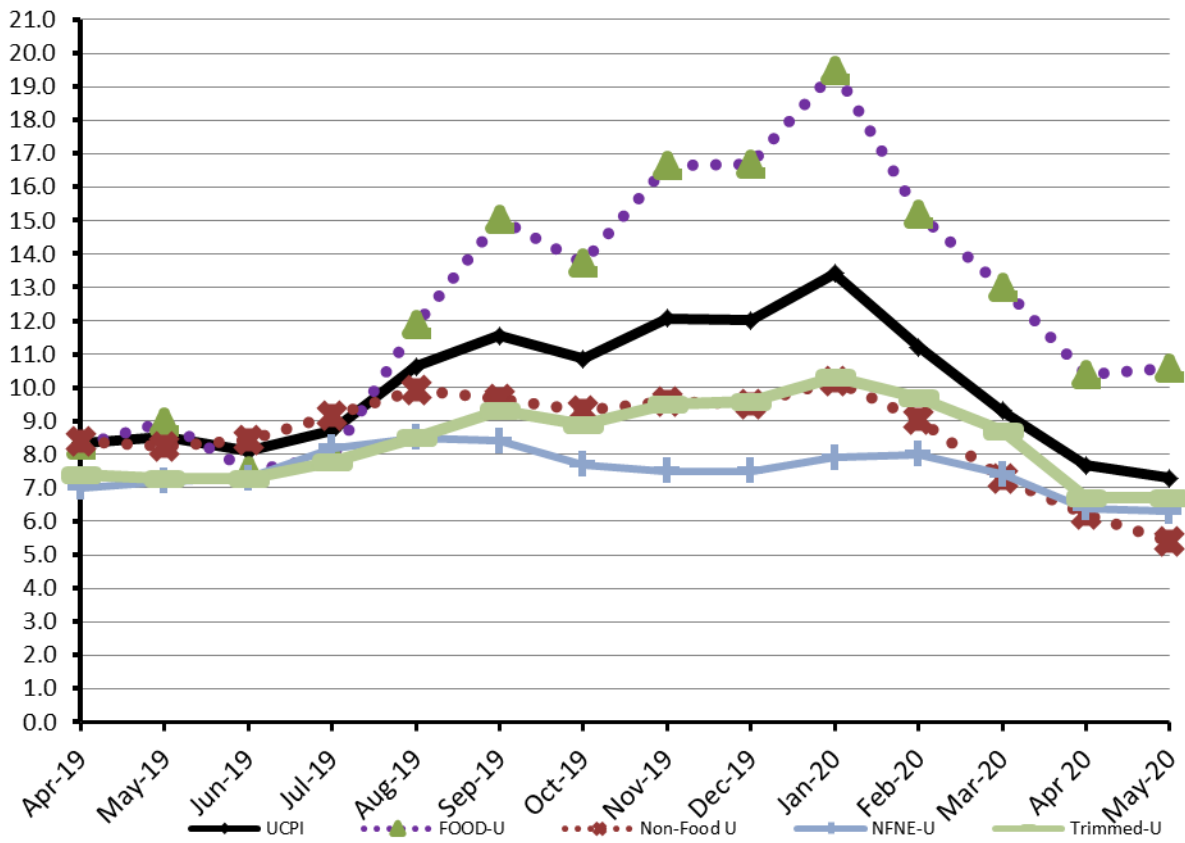
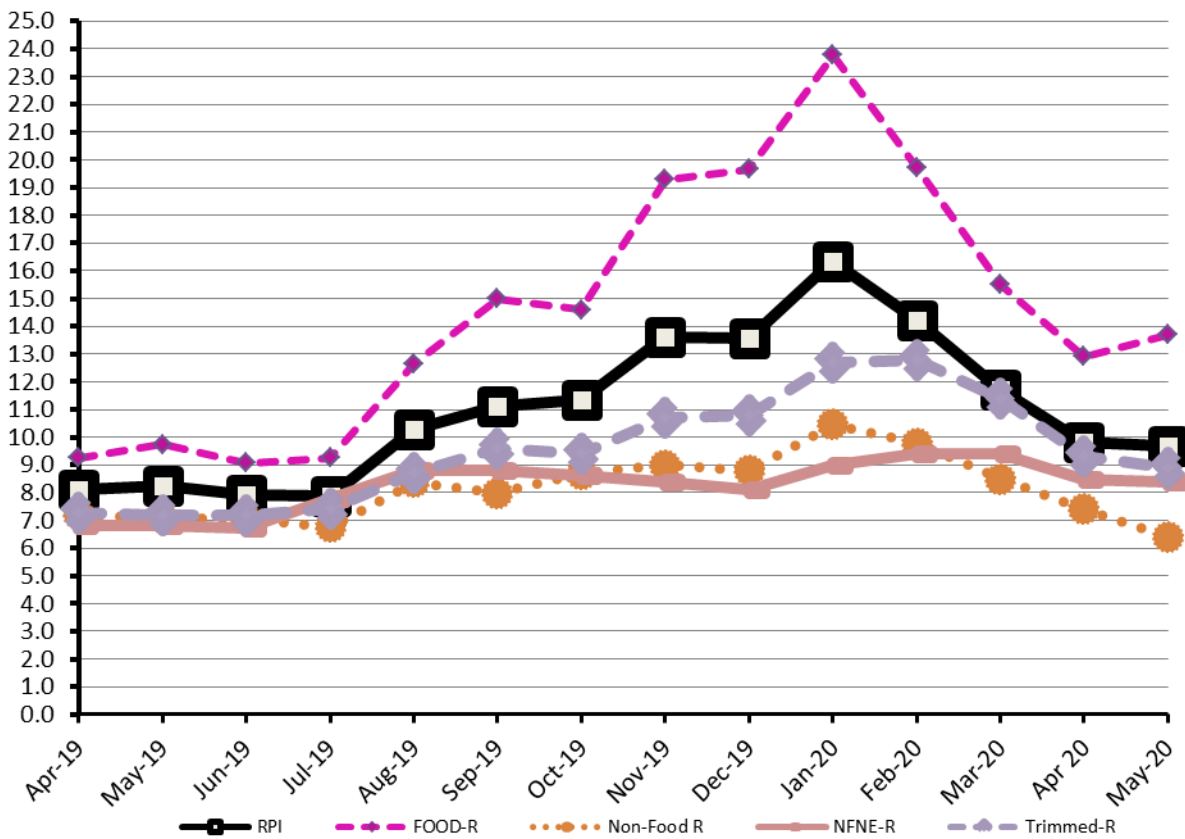


Figure 2: RCPI Inflation YoY, Special Indices



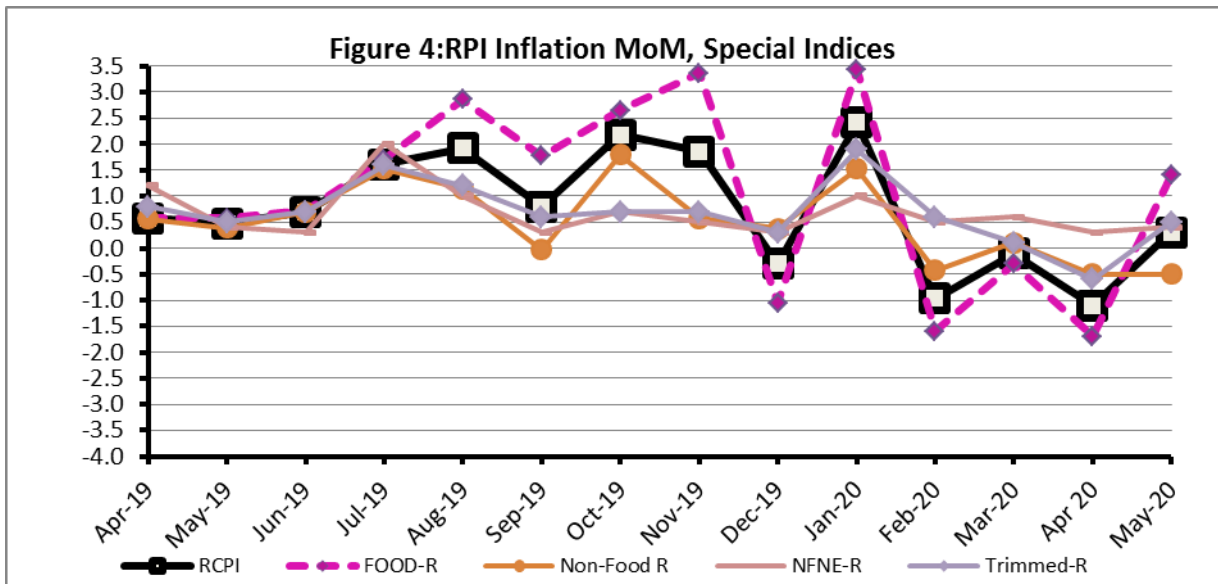
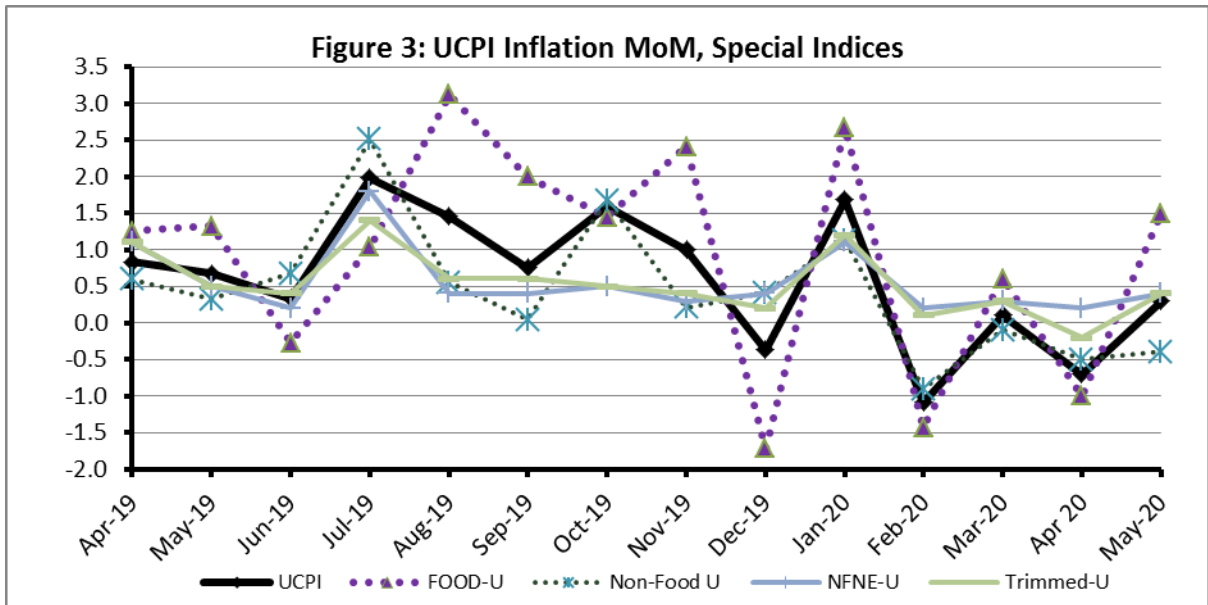


Figure 5: CPI Y.o.Y (National, Urban, Rural)

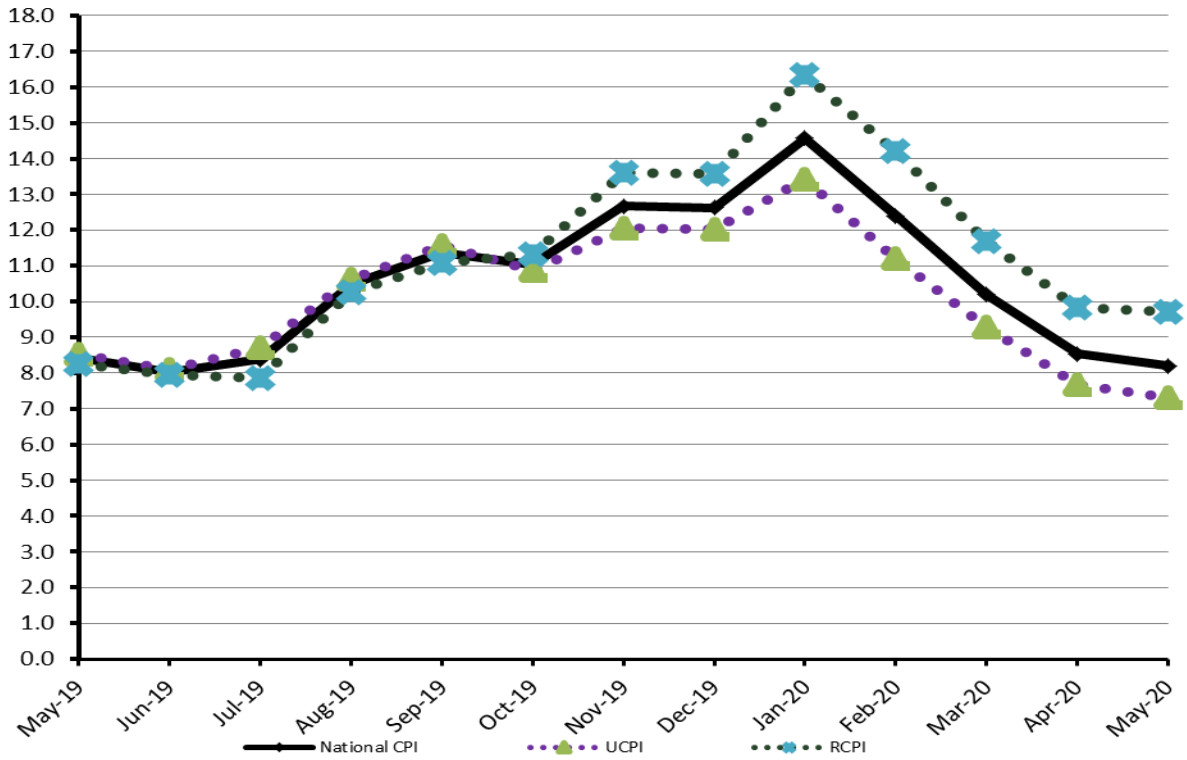
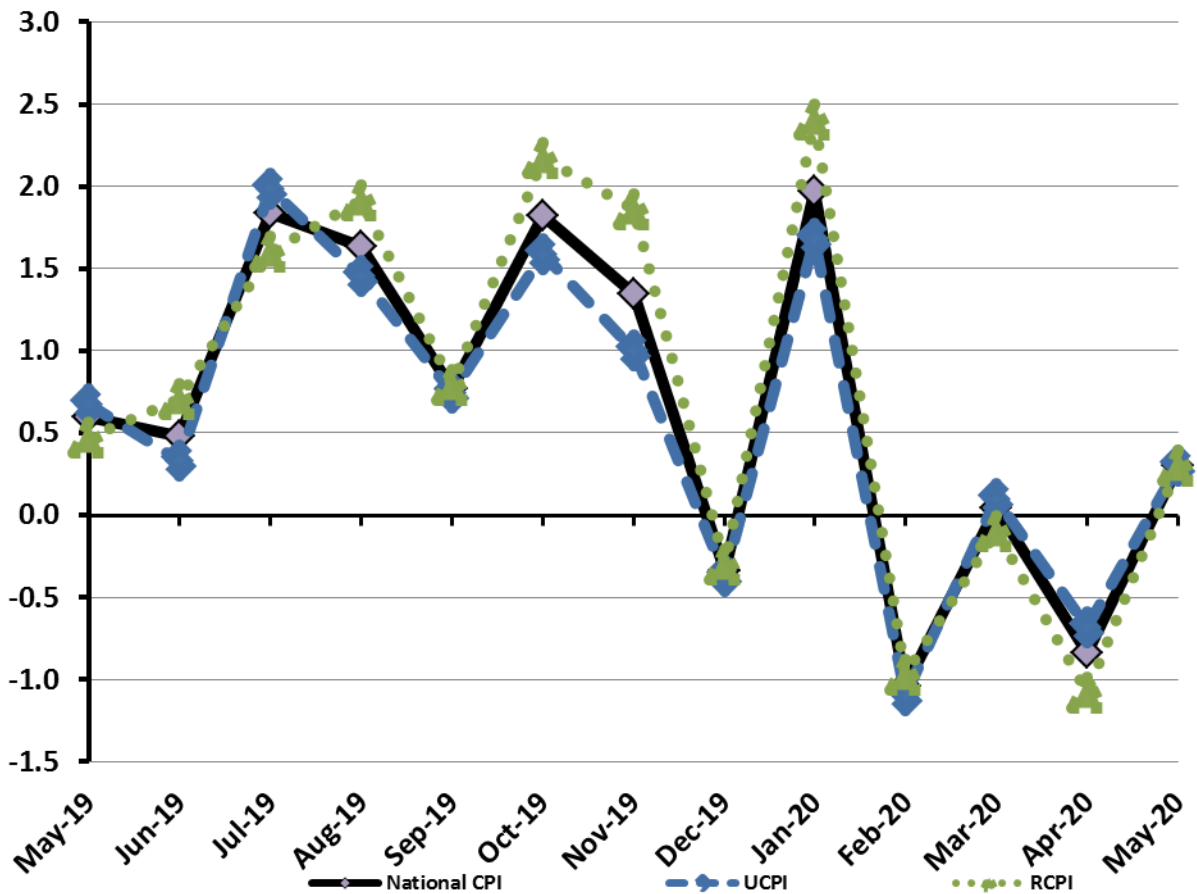


Figure 6: CPI M.o.M (National, Urban, Rural)



I. National Consumer Price Index (N-CPI)

The **National Consumer Price Index** of May 2020 is increased by 0.32% over April 2020 and increased by 8.22% over corresponding month of the last year i.e. May 2019.

Table 1 : Consumer Price Index (National) by Group of Commodities and Services (Base 2015-16)

No	Group	Group Weight (%)	Indices			% Change May 2020 Over		Impact (In % points) May 2020 Over	
			May 2020	Apr 2020	May 2019	Apr 2020	May 2019	Apr 2020	May 2019
	General	100.00	131.01	130.59	121.05	0.32	8.22	0.32	8.22
1.	Food & Non-alcoholic Bev.	34.58	132.13	130.01	117.72	1.63	12.24	0.56	4.12
	<i>Non-perishable Food Items</i>	29.60	131.11	128.11	115.55	2.34	13.47	0.68	3.81
	<i>Perishable Food Items</i>	4.99	138.16	141.28	130.59	-2.21	5.80	-0.12	0.31
2.	Alcoholic Bev. & Tobacco	1.02	137.65	137.52	115.22	0.10	19.47	0.00	0.19
3.	Clothing & Footwear	8.60	134.58	132.72	121.97	1.40	10.34	0.12	0.90
4.	Housing, Water, Electricity, Gas & Fuels	23.63	128.63	128.74	120.93	-0.08	6.37	-0.02	1.50
5.	Furnishing & Household Equipment Maintenance	4.10	128.74	128.27	118.43	0.37	8.71	0.01	0.35
6.	Health	2.79	140.36	140.05	127.85	0.22	9.79	0.01	0.29
7.	Transport	5.91	124.27	132.85	134.29	-6.45	-7.46	-0.39	-0.49
8.	Communication	2.21	106.96	106.96	105.23	0.00	1.65	0.00	0.03
9.	Recreation & Culture	1.59	119.85	119.70	114.22	0.12	4.93	0.00	0.07
10.	Education	3.79	142.40	142.40	139.64	0.00	1.98	0.00	0.09
11.	Restaurants & Hotels	6.92	131.12	130.82	120.75	0.23	8.59	0.02	0.59
12.	Miscellaneous	4.87	137.16	137.07	122.52	0.06	11.95	0.00	0.59

II. Urban Consumer Price Index (UCPI)

The **Urban Consumer Price Index** of May 2020 is increased by 0.3% over April 2020 and increased by 7.27% over corresponding month of the last year i.e. May 2019.

Table 2 : Consumer Price Index (Urban) by Group of Commodities and Services (Base 2015-16)

No	Group	Group Weight (%)	Indices			% Change May 2020 Over		Impact (In % points) May 2020 Over	
			May 2020	Apr 2020	May 2019	Apr 2020	May 2019	Apr 2020	May 2019
	General	100.00	130.99	130.60	122.11	0.30	7.27	0.30	7.27
1.	Food & Non-alcoholic Bev.	30.42	131.55	129.25	118.58	1.78	10.94	0.54	3.23
	Non-perishable Food Items	25.97	130.25	126.92	115.40	2.62	12.87	0.66	3.16
	Perishable Food Items	4.46	139.11	142.86	137.07	-2.62	1.49	-0.13	0.07
2.	Alcoholic Bev.& Tobacco	0.85	145.03	144.82	121.92	0.15	18.96	0.00	0.16
3.	Clothing & Footwear	8.01	131.67	129.69	120.26	1.53	9.49	0.12	0.75
4.	Housing, Water, Electricity, Gas & Fuels	27.03	130.22	130.08	122.23	0.11	6.54	0.03	1.77
5.	Furnishing & Household Equipment Maintenance	4.09	128.80	128.45	119.56	0.27	7.73	0.01	0.31
6.	Health	2.31	139.92	139.60	128.70	0.23	8.72	0.01	0.21
7.	Transport	6.14	124.89	133.49	133.61	-6.44	-6.53	-0.40	-0.44
8.	Communication	2.35	108.22	108.22	105.92	0.00	2.17	0.00	0.04
9.	Recreation & Culture	1.73	118.12	118.08	112.91	0.03	4.61	0.00	0.07
10.	Education	4.88	144.98	144.98	142.32	0.00	1.87	0.00	0.11
11.	Restaurants & Hotels	7.41	129.80	129.74	121.07	0.05	7.21	0.00	0.53
12.	Miscellaneous	4.77	137.02	137.08	123.55	-0.04	10.90	0.00	0.53

Main contributors to month-on-month and year-on-year percentage changes are given below and detail is given in Annexure A.

1. MONTH-ON-MONTH Top few commodities which varied from previous month are given below: -

Food Items Increased: Chicken (41.46%), Potatoes (31.19%), fruits(9.72%), Milk (4.63%), Condiments & Spices(3.71%) and Butter(2.58%).

Decreased: Onions (23.35%), vegetables (19.62%), Eggs (18.74%), Tomatoes(7.74%), Pulse gram (7.25%), Pulse masoor (4.43%), Besan (4.38%) and Wheat (3.37%).

Non-food Items Increased: Cotton cloth(4.04%), Tailoring (2.53%), Motor vehicle accessories(1.51%) and Construction input items(0.38%).

Decreased: Motor fuel (13.43%) and Liquefied Hydrocarbons (4.12%).

YEAR-ON-YEAR: Top few commodities which varied from previous year i.e. May 2019 are given below:-

Food Items Increased: Potatoes(96.94%), Pulse moong (83.21%), Pulse mash(56.73%), Pulse masoor(40.86%), Butter(37.41%), Beans(30.54%), Gur(25.65%), Vegetable ghee(25.42%), Condiments & Spices(24.67%), Besan(21.17%), Cooking oil(20.74%), Pulse gram(20.17%), Sugar(20.12%), Eggs (19.64%) and Mustard oil(15.94%).

Decreased: Tomatoes (39.49%), Onions (21.17%), vegetables (4.07%) and fruits (3.6%)

Non-food Items Increased: Gas charges (54.84%), Personal Effects n.e.c.(23.07%), Water supply(19.56%) and Construction input items(17.86%).

Decreased: Motor fuel (19.52%) and Liquefied Hydrocarbons(2.13%)

III. Rural Consumer Price Index (RCPI)

The Rural Consumer Price Index of May 2020 is increased by 0.34% over April 2020 and increased by 9.69% over corresponding month of the last year i.e. May 2019.

Table 3: Consumer Price Index (Rural) by Group of Commodities and Services (Base 2015-16)

No	Group	Group Weight (%)	Indices			% Change May 2020 Over		Impact (In % points) May 2020 Over	
			May 2020	Apr 2020	May 2019	Apr 2020	May 2019	Apr 2020	May 2019
	General	100.00	131.03	130.58	119.45	0.34	9.69	0.34	9.69
1.	Food & Non-alcoholic Bev.	40.87	132.78	130.87	116.75	1.46	13.73	0.60	5.48
	Non-perishable Food Items	35.08	132.07	129.45	115.71	2.02	14.14	0.70	4.80
	Perishable Food Items	5.79	137.05	139.45	123.06	-1.72	11.37	-0.11	0.68
2.	Alcoholic Bev. & Tobacco	1.28	130.21	130.15	108.46	0.05	20.05	0.00	0.23
3.	Clothing & Footwear	9.48	138.30	136.59	124.16	1.25	11.39	0.12	1.12
4.	Housing, Water, Electricity, Gas & Fuels	18.49	125.12	125.77	118.05	-0.52	5.99	-0.09	1.09
5.	Furnishing & Household Equipment Maintenance	4.10	128.66	127.99	116.73	0.52	10.22	0.02	0.41
6.	Health	3.51	140.80	140.49	127.00	0.22	10.87	0.01	0.41
7.	Transport	5.56	123.25	131.78	135.43	-6.47	-8.99	-0.36	-0.57
8.	Communication	1.99	104.72	104.72	103.99	0.00	0.70	0.00	0.01
9.	Recreation & Culture	1.38	123.12	122.78	116.70	0.28	5.50	0.00	0.07
10.	Education	2.13	133.48	133.48	130.38	0.00	2.38	0.00	0.06
11.	Restaurants & Hotels	6.19	133.51	132.76	120.18	0.56	11.09	0.04	0.69
12.	Miscellaneous	5.02	137.35	137.06	121.03	0.21	13.48	0.01	0.69

Main contributors to month-on-month and year-on-year percentage changes are given below and detail is given in Annexure A.

1. **MONTH-ON-MONTH** Top few commodities which varied from previous month are given below: -

Food Items Increased: Potatoes(41.55%), Chicken(41.15%), fruits(11.46%), Condiments & Spices(8.60%), Pulse Moong(4.36%), Milk (4.23%), Gur(2.75%) and Pulse Mash(2.13%).

Decreased: Tomatoes (21.82%), Onions (21.77%), Vegetables (21.08%), Eggs (13.82%), Wheat (7.57%), Pulse Gram(2.41%) and Besan(2.19%)

Non-food Items Increased: Tailoring(2.86%), Cotton Cloth(1.31%) and Hosiry(1.26%)

Decreased: Motor Fuels (14.01%) and Liquified Hydrocarbons (9.69%)

YEAR-ON-YEAR: Top few commodities which varied from previous year i.e. May 2019 are given below:-

Food Items Increased: Potatoes(126.56%), Pulse Moong(91.49%), Condiments & Spices(53.27%), Pulse Mash(49.26%), Pulse Masoor(41.31%), Beans(35.02%), Vegetable ghee(28.52%), Pulse Gram(24.71%), Cooking oil(24.56%), Gur(24.3%), Sugar(19.32%), Eggs(17.48%) and Besan(17.37%).

Decreased: Tomatoes (45.5%), Onions (13.69%) and Vegetables (4.15%)

Non-food Items Increased: Water Supply(30.55%), Postal Services(28.13%), Personal Effects n.e.c.(25.4%), Hosiry(16.96%) and Cotton Cloth(15.12%).

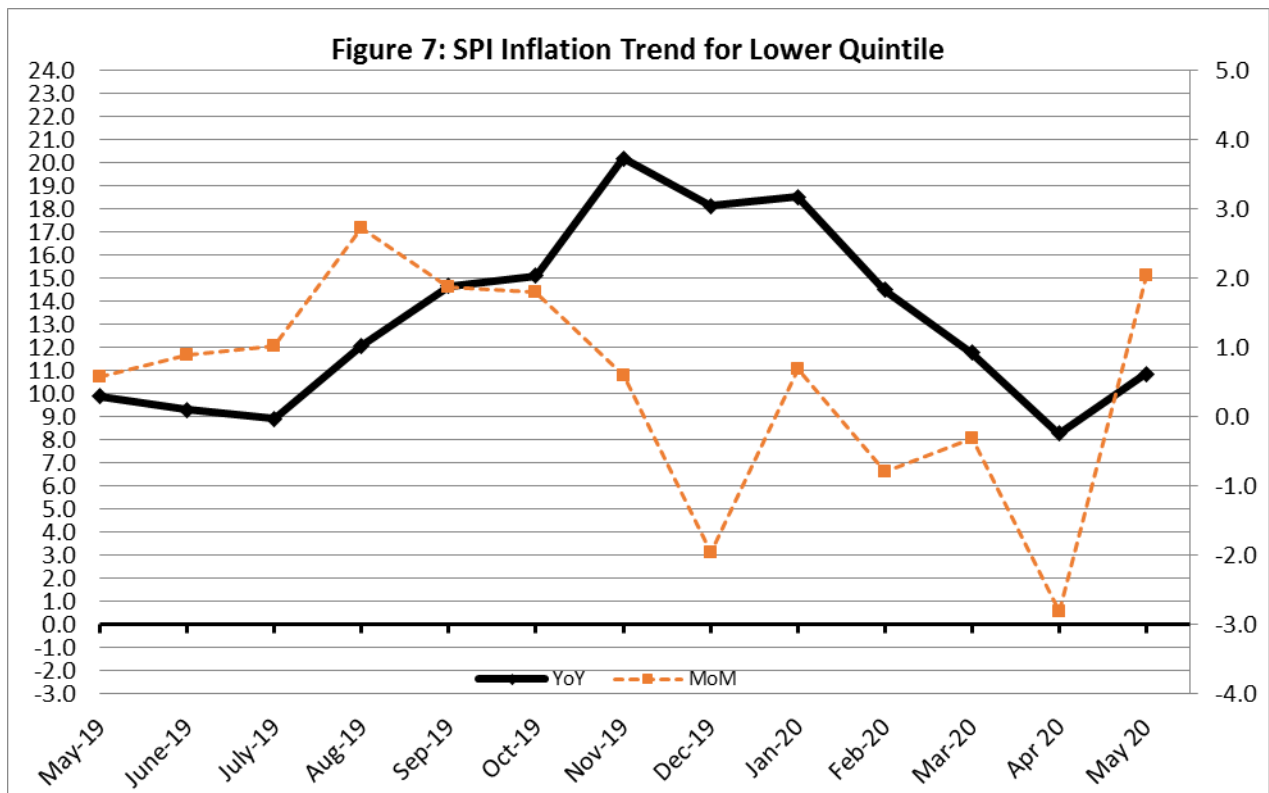
Decreased: Motor Fuels (21.54%) and Liquified Hydrocarbons (7.73%).

IV. Sensitive Price Indicator

Quintile-wise percentage changes YoY and MoM are given below in Table 4. The series from May 2019 to May 2020 is also graphed below in Figure 7.

Table 4: Sensitive Price Indicator (Base 2015-16)					
Quintiles	Indices			% Change May 2020 Over	
	May 2020	April 2020	May 2019	April 2020	May 2019
1	133.72	130.90	120.48	2.15	10.99
2	128.32	125.50	116.01	2.25	10.61
3	130.44	127.69	115.05	2.15	13.38
4	127.31	124.65	113.48	2.13	12.19
5	128.66	127.05	119.11	1.27	8.02
Combined	127.76	125.63	116.59	1.70	9.58

Table 4.1 : Weekly Percentage Change of SPI During May-2020				
Quintiles	% Change with Previous week			
	07-05-2020	14-05-2020	21-05-2020	28-05-2020
Quintile 1	0.89	-0.04	0.57	0.10
Combined	0.36	0.01	0.66	0.13



V. Wholesale Price Index

The Wholesale Price Index for May, 2020 decreased by 2.08% over April 2020. It increased by 1.50% over the corresponding month of the last year. YoY and MoM movements, from May, 2019 to May, 2020 are also graphed below in Figure 8.

Table 5: Wholesale Price Index by Group of Commodities (Base 2015-16)

No.	Group	Group Weight (%)	Indices			% Change May 2020 Over		Impact (In % points) May 2020 Over	
			May 20	Apr 20	May 19	Apr 20	May 19	Apr 20	May 19
	General	100.00	136.23	139.12	134.22	-2.08	1.50	-2.08	1.50
1.	Agriculture, Forestry & Fishery Products	25.77	141.78	138.42	130.96	2.43	8.26	0.62	2.08
2.	Ores & Minerals, Electricity, Gas & Water	12.01	161.34	161.67	131.79	-0.20	22.42	-0.03	2.64
3.	Food Products, Beverages & Tobacco, Textiles, Apparel & Leather Products	31.11	135.41	135.12	126.23	0.21	7.27	0.06	2.13
	i. Food Products, Bev. & Tobacco	20.07	132.30	131.89	118.86	0.31	11.31	0.06	2.01
	ii. Textiles and Apparel	10.33	142.60	142.59	141.68	0.01	0.65	0.00	0.07
	iii. Leather Products	0.71	118.88	117.90	110.18	0.83	7.90	0.01	0.05
4.	Other Transportable Goods except Metal Products, Machinery & Equipment	22.40	117.64	134.95	156.85	-12.83	-25.00	-2.79	-6.54
5.	Metal Products, Machinery & Equipment	8.72	135.94	135.13	117.55	0.60	15.64	0.05	1.19

Main contributors to month-on-month and year-on-year percentage changes are given below and detail is given in Annexure C.

1. **MONTH-ON-MONTH** Top few commodities which varied from previous month are given below: -

Increased: Poultry(39.74%), Potatoes(33.51%), Fruits(13.21%), Milk(9.65%), Spices(7.68%), Steel Bar & Sheets(4.09%), Leather (2.22%), Meat(2.04%) and Rice(1.68%).

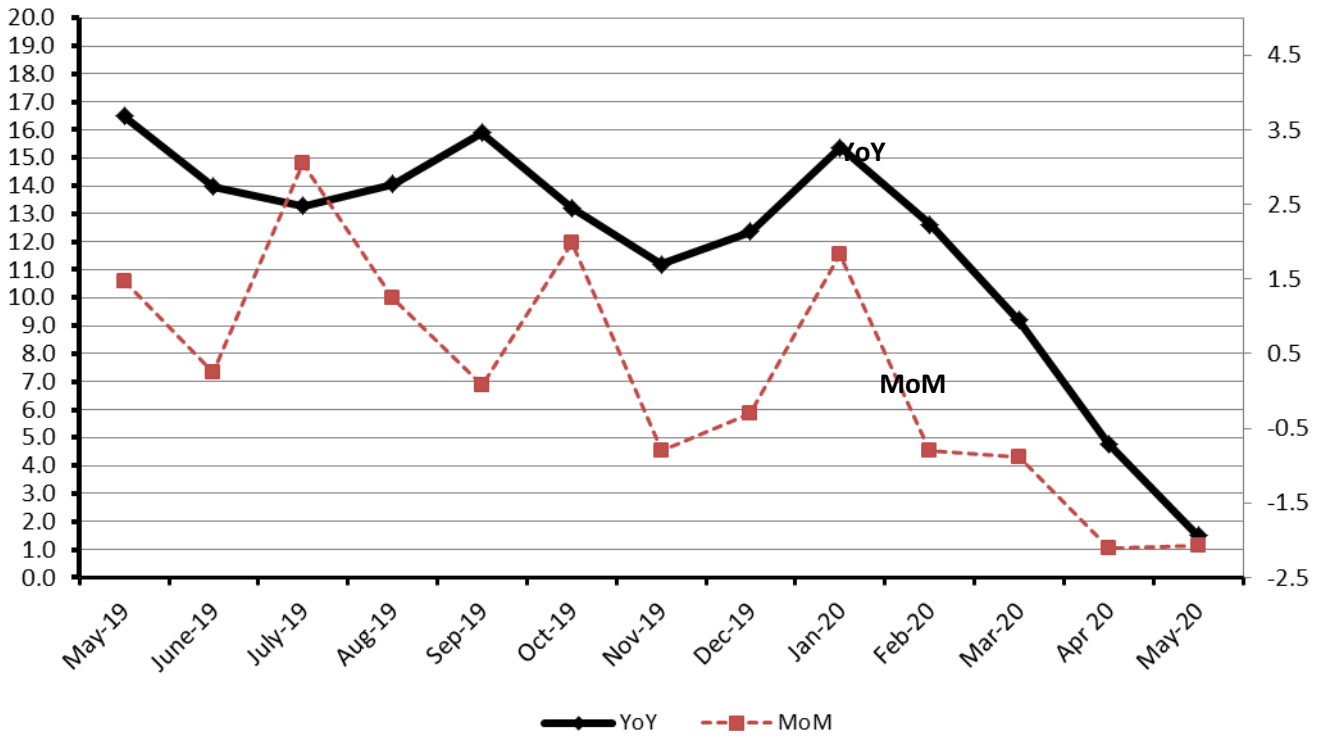
Decreased: Kerosene Oil(38.75%), Furnace Oil(26.67%), Diesel Oil(24.98%), Vegetables(24.75%), Eggs(19.77%) and Motor Spirit(16.15%).

YEAR-ON-YEAR Top few commodities which varied from previous year i.e. May, 2019 are given below: -

Increased: Potatoes(132.09%), Natural Gas(29.28%), Bed Foam(26.61%), Pulses(25%), Cotton Seeds(24.1%), Vegetable Ghee(23.86%), Chocolate(22.64%), Footwears(21.71%), Medicines(18.96%), Motor Vehicles(18.79%), Sugar (18.79%) and Eggs(17.61%)

Decreased: Furnace Oil(51.94%), Kerosene Oil(50.97%), Diesel Oil(41.16%), Motor Spirit(25.79%) and Vegetables(16.96%)

Figure 8: WPI Inflation



Annexure A:CPI (Urban) Index Numbers by Commodity Groups & Commodities (2015-16=100)

Item and Specification	Weight	Index Numbers			% Change in May 2020 over	
		May 20	Apr 20 19	May	Apr 2020	May 2019
General	100.0000	130.99	130.60	122.11	+ 0.30	+ 7.27
Food and non-alcoholic Bevera	30.4215	131.55	129.25	118.58	+ 1.78	+ 10.94
01 Wheat	0.6120	117.00	121.08	104.72	- 3.37	+ 11.73
02 Wheat flour	3.0075	116.41	116.61	102.99	- 0.17	+ 13.03
03 Wheat products	0.0936	124.64	123.84	109.01	+ 0.65	+ 14.34
04 Besan	0.0830	127.86	133.72	105.52	- 4.38	+ 21.17
05 Rice	1.1804	133.45	132.45	124.83	+ 0.76	+ 6.91
06 Bakery and confectionary	0.4770	126.34	126.31	110.43	+ 0.02	+ 14.41
07 Nimco	0.1224	125.49	124.74	111.22	+ 0.60	+ 12.83
08 Meat	2.0411	146.83	145.46	131.94	+ 0.94	+ 11.29
09 Chicken	1.3631	135.83	96.02	129.52	+ 41.46	+ 4.87
10 Fish	0.3855	114.13	114.32	118.55	- 0.17	- 3.73
11 Milk fresh	7.1070	121.83	116.44	112.47	+ 4.63	+ 8.32
12 Milk products	0.6407	124.94	122.67	115.37	+ 1.85	+ 8.30
13 Milk powder	0.3106	129.91	129.99	113.54	- 0.06	+ 14.42
14 Eggs	0.5083	109.03	134.17	91.13	- 18.74	+ 19.64
15 Butter	0.0932	170.16	165.88	123.83	+ 2.58	+ 37.41
16 Mustard oil	0.0120	125.68	125.59	108.40	+ 0.07	+ 15.94
17 Cooking oil	1.1016	144.78	146.37	119.91	- 1.09	+ 20.74
18 Vegetable ghee	1.0324	149.49	150.61	119.19	- 0.74	+ 25.42
19 Dry fruits	0.3299	129.72	129.31	116.49	+ 0.32	+ 11.36
20 Fresh fruits	1.4363	168.95	153.98	175.26	+ 9.72	- 3.60
21 Pulse masoor	0.1624	114.42	119.72	81.23	- 4.43	+ 40.86
22 Pulse moong	0.1697	176.38	177.27	96.27	- 0.50	+ <u>83.21</u>
23 Pulse mash	0.1152	107.89	107.87	68.84	+ 0.02	+ <u>56.73</u>
24 Pulse gram	0.1660	125.84	135.67	104.72	- 7.25	+ 20.17
25 Gram whohe	0.0912	129.92	133.69	118.40	- 2.82	+ 9.73
26 Beans	0.0408	144.87	143.77	110.98	+ 0.77	+ 30.54
27 Potatoes	0.4496	226.28	172.48	114.90	+ 31.19	+ <u>96.94</u>
28 Onions	0.5928	101.08	131.88	128.22	- 23.35	- 21.17
29 Tomatoes	0.3459	62.71	67.97	103.63	- 7.74	- 39.49
30 Fresh vegetables	1.5306	111.37	138.55	116.09	- 19.62	- 4.07
31 Sugar	1.1130	131.06	131.47	109.11	- 0.31	+ 20.12
32 Gur	0.0379	140.83	139.17	112.08	+ 1.19	+ 25.65
33 Honey	0.1017	118.89	118.89	111.22	+ 0.00	+ 6.90
34 Sweetmeat	0.3535	139.49	138.87	127.24	+ 0.45	+ 9.63
35 Ice cream	0.1044	126.61	126.06	112.47	+ 0.44	+ 12.57
36 Condiments and Spices	1.3340	166.40	160.45	133.47	+ 3.71	+ 24.67
37 Dessert preparation	0.0419	124.02	121.42	111.92	+ 2.14	+ 10.81
38 Tea	0.8427	140.74	140.74	128.50	+ 0.00	+ 9.53
39 Beverages	0.8906	126.47	124.67	112.47	+ 1.44	+ 12.45
Alcoholic Beverages, Tobacco	0.8540	145.03	144.82	121.92	+ 0.15	+ 18.96
40 Cigarettes	0.7167	135.09	134.87	110.86	+ 0.16	+ 21.86
41 Pan prepared	0.1373	196.90	196.75	179.65	+ 0.08	+ 9.60
Clothing and footwear	8.0096	131.67	129.69	120.26	+ 1.53	+ 9.49
42 Cotton cloth	2.2227	134.03	128.83	122.14	+ 4.04	+ 9.73
43 Woolen cloth	0.8361	126.22	125.99	112.12	+ 0.18	+ 12.58
44 Readymade garments	1.3196	130.20	129.96	122.40	+ 0.18	+ 6.37
45 Woolen readymade garments	0.4307	126.88	126.88	115.34	+ 0.00	+ 10.01
46 Tailoring	1.0741	140.36	136.89	128.02	+ 2.53	+ 9.64
47 Hosiry	0.4070	127.61	127.52	122.44	+ 0.07	+ 4.22
48 Dopatta	0.1713	124.09	123.85	111.22	+ 0.19	+ 11.57
49 Cleaning and laundring	0.0665	130.66	130.50	121.77	+ 0.12	+ 7.30
50 Footware	1.4816	129.66	129.66	116.34	+ 0.00	+ 11.45
Housing, water, Elec., Gas an	27.0332	130.22	130.08	122.23	+ 0.11	+ 6.54
51 House rent	19.2558	130.02	130.02	124.78	+ 0.00	+ 4.20
52 Construcion input items	0.3765	143.58	143.04	121.82	+ 0.38	+ 17.86
53 Construction wage rates	0.2025	148.80	148.38	138.07	+ 0.28	+ 7.77
54 Water supply	0.5269	143.78	131.89	120.26	+ 9.02	+ 19.56
55 Garbage collection	0.1064	156.98	156.98	144.99	+ 0.00	+ 8.27
56 Electricity charges	4.5562	108.04	108.04	106.54	+ 0.00	+ 1.41
57 Gas charges	1.0807	216.94	216.94	140.11	+ 0.00	+ <u>54.84</u>
58 Liquified Hydrocarbons	0.5064	128.31	133.83	131.10	- 4.12	- 2.13
59 Solid Fuel	0.4218	114.43	114.27	108.44	+ 0.14	+ 5.52

Annexure A:CPI (Urban) Index Numbers by Commodity Groups & Commodities (2015-16=100)

Item and Specification	Weight	Index Numbers			% Change in May 2020 over			
		May 20	Apr 20 19	May	Apr 2020	May 2019		
<i>Furnishing and household equi</i>	4.0937	128.80	128.45	119.56	+	0.27	+	7.73
60 Furniture and furnishing	0.4750	129.15	128.32	117.60	+	0.65	+	9.82
61 Carpets	0.0308	111.16	111.09	105.33	+	0.06	+	5.53
62 Household textiles	0.3420	125.82	125.71	121.96	+	0.09	+	3.16
63 Household equipments	1.0032	128.00	127.53	118.99	+	0.37	+	7.57
64 Plastic products	0.0536	116.84	116.63	113.35	+	0.18	+	3.08
65 Major tools & equipments	0.0084	120.39	120.32	110.56	+	0.06	+	8.89
66 Washing soap/detergents/match	1.4112	129.65	129.31	118.72	+	0.26	+	9.21
67 Household servant	0.7695	131.02	130.99	123.06	+	0.02	+	6.47
<i>Health</i>	2.3098	139.92	139.60	128.70	+	0.23	+	8.72
68 Drugs and medicines	1.0735	139.26	138.92	125.13	+	0.24	+	11.29
69 Therapeutic Appliances and Eq	0.0054	107.20	107.20	106.35	+	0.00	+	0.80
70 Doctor (MBBS) clinic fee	0.4044	169.68	168.77	148.47	+	0.54	+	14.29
71 Dental services	0.0156	118.61	118.61	111.63	+	0.00	+	6.25
72 Medical tests	0.2367	124.35	124.34	119.60	+	0.01	+	3.97
73 Hospitals services	0.5742	127.49	127.49	125.89	+	0.00	+	1.27
<i>Transport</i>	6.1368	124.89	133.49	133.61	-	6.44	-	6.53
74 Motor vehicles	0.8097	146.86	146.48	129.23	+	0.26	+	13.64
75 Motor vehicle accessories	0.1941	130.09	128.16	115.31	+	1.51	+	12.82
76 Motor fuel	2.9088	119.92	138.53	149.01	-	13.43	-	19.52
77 Mechanical services	0.4290	130.66	129.15	119.20	+	1.17	+	9.61
78 Motor vehicle tax	0.0482	126.72	126.72	124.01	+	0.00	+	2.19
79 Transport services	1.7470	120.93	120.93	115.84	+	0.00	+	4.39
<i>Communication</i>	2.3536	108.22	108.22	105.92	+	0.00	+	2.17
80 Postal services	0.0190	147.05	147.05	147.05	+	0.00	+	0.00
81 Communication apparatus	0.4524	118.74	118.74	109.18	+	0.00	+	8.76
82 Communication Services	1.8822	105.30	105.30	104.72	+	0.00	+	0.55
<i>Recreation and culture</i>	1.7301	118.12	118.08	112.91	+	0.03	+	4.61
83 Recreation and culture	0.6478	110.31	110.25	106.61	+	0.05	+	3.47
84 Text books	0.6655	117.25	117.25	111.07	+	0.00	+	5.56
85 Newspapers	0.0716	151.55	151.55	151.55	+	0.00	+	0.00
86 stationery	0.3452	127.51	127.42	120.29	+	0.07	+	6.00
<i>Education</i>	4.8807	144.98	144.98	142.32	+	0.00	+	1.87
87 Education	4.8807	144.98	144.98	142.32	+	0.00	+	1.87
<i>Restaurants and hotels</i>	7.4050	129.80	129.74	121.07	+	0.05	+	7.21
88 Readymade food	5.5235	129.07	128.98	120.21	+	0.07	+	7.37
89 Marriage Hall Charges	1.7514	133.41	133.41	124.46	+	0.00	+	7.19
90 Accommodation Services	0.1301	112.40	112.40	111.88	+	0.00	+	0.46
<i>Misc. goods and services</i>	4.7720	137.02	137.08	123.55	-	0.04	+	10.90
91 Personal Grooming Services	0.8001	126.43	125.75	119.60	+	0.54	+	5.71
92 Electrical Appliances for Per	0.0465	116.78	116.78	114.64	+	0.00	+	1.87
93 Appliances/Articles/Products	2.9807	127.73	127.62	118.52	+	0.09	+	7.77
94 Personal Effects n.e.c.	0.9447	176.28	177.51	143.23	-	0.69	+	23.07

Annexure B:CPI (Rural) Index Numbers by Commodity Groups & Commodities (2015-16=100)

Item and Specification	Weight	Index Numbers			% Change in May 2020 over	
		May 20	Apr 20 19	May	Apr 2020	May 2019
General	100.0000	131.03	130.58	119.45	+ 0.34	+ 9.69
Food and non-alcoholic Bevera	40.8668	132.78	130.87	116.75	+ 1.46	+ 13.73
01 Wheat	3.4736	115.74	125.22	101.62	- 7.57	+ 13.89
02 Wheat Flour	3.4297	118.07	119.76	102.79	- 1.41	+ 14.87
03 Wheat Products	0.1068	125.37	125.33	110.44	+ 0.03	+ 13.52
04 Besan	0.0728	130.61	133.53	111.28	- 2.19	+ 17.37
05 Rice	1.5501	166.26	164.46	148.54	+ 1.09	+ 11.93
06 Bakery and Confectionary	0.3702	127.22	127.14	113.77	+ 0.06	+ 11.82
07 Nimco	0.0774	118.14	118.14	107.82	+ 0.00	+ 9.57
08 Meat	1.7146	146.19	144.82	133.20	+ 0.95	+ 9.75
09 Chicken	1.4641	139.74	99.00	133.15	+ 41.15	+ 4.95
10 Fish	0.2640	124.58	123.07	123.90	+ 1.23	+ 0.55
11 Milk fresh	10.3803	122.13	117.17	115.49	+ 4.23	+ 5.75
12 Milk products	0.9624	123.49	121.00	116.45	+ 2.06	+ 6.05
13 Milk powder	0.1062	123.86	123.27	105.78	+ 0.48	+ 17.09
14 Eggs	0.5665	109.88	127.50	93.53	- 13.82	+ 17.48
15 Butter	0.3333	127.66	127.66	120.30	+ 0.00	+ 6.12
16 Mustard oil	0.0136	128.20	129.44	112.58	- 0.96	+ 13.87
17 Cooking oil	0.6011	150.99	152.72	121.22	- 1.13	+ 24.56
18 Vegetable ghee	2.3764	159.38	160.09	124.01	- 0.44	+ 28.52
19 Dry fruits	0.2496	138.56	138.35	124.37	+ 0.15	+ 11.41
20 Fresh fruits	1.4505	177.09	158.88	163.72	+ 11.46	+ 8.17
21 Pulse Masoor	0.2076	117.70	115.51	83.29	+ 1.90	+ 41.31
22 Pulse Moong	0.2510	190.51	182.55	99.49	+ 4.36	+ 91.49
23 Pulse Mash	0.1465	105.59	103.39	70.74	+ 2.13	+ 49.26
24 Pulse Gram	0.2751	127.52	130.67	102.25	- 2.41	+ 24.71
25 Gram Whole	0.1116	124.51	125.99	115.18	- 1.17	+ 8.10
26 Beans	0.0896	162.13	159.45	120.08	+ 1.68	+ 35.02
27 Potatoes	0.7437	236.64	167.18	104.45	+ 41.55	+ 126.5
28 Onions	0.8965	98.12	125.43	113.68	- 21.77	- 13.69
29 Tomatoes	0.5069	52.54	67.20	96.40	- 21.82	- 45.50
30 Fresh Vegetables	2.0947	106.69	135.18	111.31	- 21.08	- 4.15
31 Sugar	2.0296	131.25	131.70	110.00	- 0.34	+ 19.32
32 Gur	0.1522	137.28	133.61	110.44	+ 2.75	+ 24.30
33 Honey	0.0296	122.76	122.76	118.42	+ 0.00	+ 3.66
34 Sweetmeat	0.3967	126.60	126.10	112.53	+ 0.40	+ 12.50
35 Ice Cream	0.0568	126.39	125.95	114.74	+ 0.35	+ 10.15
36 Condiments and Spices	1.4919	180.00	165.74	117.44	+ 8.60	+ 53.27
37 Dessert Preparation	0.0133	118.49	117.18	109.55	+ 1.12	+ 8.16
38 Tea	1.2566	137.87	137.87	125.74	+ 0.00	+ 9.65
39 Beverages	0.5537	126.34	124.59	110.03	+ 1.40	+ 14.82
Alcoholic Beverages, Tobacco	1.2786	130.21	130.15	108.46	+ 0.05	+ 20.05
40 Cigarettes	1.2364	129.28	129.22	107.35	+ 0.05	+ 20.43
41 Pan Prepared	0.0422	157.44	157.44	141.17	+ 0.00	+ 11.53
Clothing and footwear	9.4826	138.30	136.59	124.16	+ 1.25	+ 11.39
42 Cotton Cloth	2.8381	149.52	147.58	129.88	+ 1.31	+ 15.12
43 Woolen Cloth	1.0959	126.35	125.62	117.58	+ 0.58	+ 7.46
44 Readymade Garments	1.1345	133.73	133.09	122.71	+ 0.48	+ 8.98
45 Woolen Readymade Garments	0.5401	130.27	130.27	119.13	+ 0.00	+ 9.35
46 Tailoring	1.2999	137.50	133.68	128.02	+ 2.86	+ 7.41
47 Hosiry	0.4322	157.62	155.66	134.76	+ 1.26	+ 16.96
48 Dopatta	0.2078	131.99	130.72	117.32	+ 0.97	+ 12.50
49 Cleaning and Laundering	0.0176	130.42	128.85	116.25	+ 1.22	+ 12.19
50 Footware	1.9165	130.41	128.84	117.54	+ 1.22	+ 10.95
Housing, water, Elec., Gas an	18.4853	125.12	125.77	118.05	- 0.52	+ 5.99
51 House Rent	8.6110	130.00	130.00	123.64	+ 0.00	+ 5.14
52 Construction Input Items	0.6306	121.22	120.52	108.87	+ 0.58	+ 11.34
53 Construction Wage Rates	0.2526	149.47	148.22	134.04	+ 0.84	+ 11.51
54 Water Supply	0.0645	158.09	158.09	121.10	+ 0.00	+ 30.55
55 Garbage Collection	0.0080	138.15	138.15	133.25	+ 0.00	+ 3.68
56 Electricity Charges	3.4431	108.04	108.04	106.54	+ 0.00	+ 1.41
57 Liquified Hydrocarbons	0.9994	116.57	129.08	126.34	- 9.69	- 7.73
58 Solid Fuel	4.4761	129.46	129.50	114.64	- 0.03	+ 12.93
Furnishing and household equi	4.1031	128.66	127.99	116.73	+ 0.52	+ 10.22

Annexure B:CPI (Rural) Index Numbers by Commodity Groups & Commodities (2015-16=100)

Item and Specification	Weight	Index Numbers			% Change in May 2020 over	
		May 20	Apr 20 19	May	Apr 2020	May 2019
59 Furniture and Furnishing	0.5786	131.41	130.01	115.56	+ 1.08	+ 13.72
60 Household Textiles	0.4382	127.57	127.00	117.24	+ 0.45	+ 8.81
61 Household Equipments	1.2774	133.06	132.64	124.10	+ 0.32	+ 7.22
62 Plastic Products	0.0776	138.02	136.39	125.16	+ 1.20	+ 10.27
63 Major Tools and Equipments	0.0324	115.93	115.54	111.79	+ 0.34	+ 3.70
64 Washing Soaps, Detergents and	1.6989	124.52	123.92	111.15	+ 0.48	+ 12.03
Health	3.5141	140.80	140.49	127.00	+ 0.22	+ 10.87
65 Drugs and Medicines	1.5792	142.02	141.50	127.46	+ 0.37	+ 11.42
66 Doctor Clinic Fee	0.5128	161.02	161.02	136.03	+ 0.00	+ 18.37
67 Dental Services	0.0181	122.97	122.97	110.41	+ 0.00	+ 11.38
68 Medical Tests	0.3967	143.22	142.53	128.32	+ 0.48	+ 11.61
69 Hospitals Services	1.0073	127.98	127.98	121.47	+ 0.00	+ 5.36
Transport	5.5580	123.25	131.78	135.43	- 6.47	- 8.99
70 Motor Vehicles	0.7305	127.10	127.10	117.80	+ 0.00	+ 7.89
71 Motor Vehicles Accessories	0.1572	135.49	135.22	121.35	+ 0.20	+ 11.65
72 Motor Fuels	2.4932	116.87	135.91	148.96	- 14.01	- 21.54
73 Mechanical Services	0.3645	153.45	153.45	145.95	+ 0.00	+ 5.14
74 Motor Vehicle Tax	0.0174	127.98	127.98	127.98	+ 0.00	+ 0.00
75 Transport Services	1.7952	123.29	123.29	122.97	+ 0.00	+ 0.26
Communication	1.9940	104.72	104.72	103.99	+ 0.00	+ 0.70
76 Postal Services	0.0070	149.43	149.43	116.62	+ 0.00	+ 28.13
77 Communication Apparatus	0.3362	118.95	118.95	116.14	+ 0.00	+ 2.42
78 Communication Services	1.6508	101.63	101.63	101.47	+ 0.00	+ 0.16
Recreation and culture	1.3764	123.12	122.78	116.70	+ 0.28	+ 5.50
79 Recreation and Culture	0.4763	128.38	128.13	117.57	+ 0.20	+ 9.19
80 Text Books	0.5047	110.23	110.23	106.70	+ 0.00	+ 3.31
81 Newspapers	0.0230	161.68	161.68	161.68	+ 0.00	+ 0.00
82 Stationery	0.3724	131.49	130.53	126.38	+ 0.74	+ 4.04
Education	2.1342	133.48	133.48	130.38	+ 0.00	+ 2.38
83 Education	2.1342	133.48	133.48	130.38	+ 0.00	+ 2.38
Restaurants and hotels	6.1895	133.51	132.76	120.18	+ 0.56	+ 11.09
84 Readymade Food	3.8001	138.56	137.34	123.65	+ 0.89	+ 12.06
85 Marriage Hall Charges	2.2525	126.93	126.93	115.47	+ 0.00	+ 9.92
86 Accommodation Services	0.1369	101.59	101.59	101.59	+ 0.00	+ 0.00
Misc. goods and services	5.0174	137.35	137.06	121.03	+ 0.21	+ 13.48
87 Personal Grooming Services	1.5363	137.84	137.45	124.25	+ 0.28	+ 10.94
88 Appliances/Articles/Products	2.2746	120.95	120.23	112.14	+ 0.60	+ 7.86
89 Personal Effects n.e.c.	1.2065	167.64	168.30	133.68	- 0.39	+ 25.40

Annexure C: Wholesale Price Indices by Major Groups & Commodities

(2015-16=100)

Item and Specification	Weight	Index Numbers			% Change in May 2020 over			
		May 20	Apr 20 19	May	Apr 2020	May 2019		
General	100.0000	136.23	139.12	134.22	-	2.08	+	1.50
Agriculture Forestry & Fisher	25.7674	141.78	138.42	130.96	+	2.43	+	8.26
001 Wheat	0.6297	113.32	119.47	103.17	-	5.15	+	9.84
002 Maize	0.6764	151.28	156.51	135.95	-	3.34	+	11.28
003 Rice	2.4413	150.89	148.39	138.05	+	1.68	+	9.30
004 Sorghum / Jowar	0.0214	198.09	178.75	162.29	+	10.82	+	22.06
005 Millet / Bajra	0.0374	122.11	121.93	134.32	+	0.15	-	9.09
006 Vegetables	1.2441	101.30	134.61	121.99	-	24.75	-	16.96
007 Fresh Fruits	1.5144	168.40	148.75	185.03	+	13.21	-	8.99
008 Dry Fruits	0.2478	129.04	127.34	122.30	+	1.34	+	5.51
009 Cotton Seeds	1.1511	132.08	132.02	106.43	+	0.05	+	24.10
010 Other Oil Seeds	0.0722	134.26	134.06	118.57	+	0.15	+	13.23
011 Edible Roots / Potatoes	0.2540	272.57	204.16	117.44	+	33.51	+	132.0
012 Stimulant & Spice Crops	0.1634	274.38	273.73	150.95	+	0.24	+	81.77
013 Pulses	0.4901	129.32	138.08	103.46	-	6.34	+	25.00
014 Sugar Crops	1.0725	121.83	121.83	112.02	+	0.00	+	8.76
015 Fibre Crops	5.3169	172.18	172.18	165.52	+	0.00	+	4.02
016 Unmanufactured Tobacco	0.0742	182.52	182.08	150.96	+	0.24	+	20.91
017 Poultry	0.5633	134.74	96.42	130.53	+	39.74	+	3.23
018 Raw Milk from Bovine Animals	7.0279	123.78	112.89	108.48	+	9.65	+	14.10
019 Eggs	0.5034	103.63	129.16	88.11	-	19.77	+	17.61
020 Raw Animal Materials / Wool	0.0351	105.33	105.33	106.59	+	0.00	-	1.18
021 Hides, Skins & Fur Skins, Raw	0.4834	38.82	38.67	46.05	+	0.39	-	15.70
022 Fuel Wood in Logs	0.0179	115.92	115.92	107.21	+	0.00	+	8.12
023 Fish Live Fresh or Chilled	1.7295	155.00	155.00	146.74	+	0.00	+	5.63
Ores/Minerals, Elec., Gas & W	12.0069	161.34	161.67	131.79	-	0.20	+	22.42
024 Coal not Agglomerated	0.7508	75.79	82.17	82.17	-	7.76	-	7.76
025 Natural Gas Liquefied	5.7065	196.18	196.04	151.75	+	0.07	+	29.28
026 Salt & Pure Sodium Chloride	0.0584	161.99	161.99	150.56	+	0.00	+	7.59
027 Electrical Energy	5.4912	136.82	136.82	117.62	+	0.00	+	16.32
Food, Beverages, Tobacco, Textil	31.1122	135.41	135.12	126.23	+	0.21	+	7.27
Food Products, Beverages &	20.0718	132.30	131.89	118.86	+	0.31	+	11.31
028 Meat of Animals	3.4559	149.35	146.37	131.82	+	2.04	+	13.30
029 Vegetables & Fruit Juice	0.0058	112.76	112.76	123.74	+	0.00	-	8.87
030 Dried Fruits & Nuts	0.1733	157.54	157.54	147.74	+	0.00	+	6.63
031 Fruit Juices	0.3880	123.23	118.62	112.33	+	3.89	+	9.70
032 Vegetable Oils Refined	1.9242	123.22	123.25	114.31	-	0.02	+	7.79
033 Vegetable Ghee	1.5632	147.75	149.54	119.29	-	1.20	+	23.86
034 Oil Cakes	0.9611	140.16	140.10	121.42	+	0.04	+	15.43
035 Processed Liquid Milk	4.4437	134.03	134.03	125.38	+	0.00	+	6.90
036 Milk & Cream in Solid Form	0.0316	124.83	124.83	111.31	+	0.00	+	12.15
037 Ice Cream	0.0047	117.05	117.05	106.99	+	0.00	+	9.40
038 Dairy Products N.E.C	0.0117	131.25	130.52	124.54	+	0.56	+	5.39
039 Wheat Flour	2.3034	117.23	118.60	103.27	-	1.16	+	13.52
040 Other Cereal Flour	0.0604	123.82	135.40	108.10	-	8.55	+	14.54
041 Sugar Refined	1.7975	130.79	130.39	110.10	+	0.31	+	18.79
042 Chocolate	0.0139	81.57	81.57	66.51	+	0.00	+	22.64
043 Sugar Confectionary	0.0738	115.50	115.50	111.69	+	0.00	+	3.41
044 Coffee & Tea	0.7303	127.71	127.71	117.36	+	0.00	+	8.82
045 Spices	0.1449	155.60	144.50	139.86	+	7.68	+	11.25
046 Other Food Products	0.0336	112.35	112.35	109.66	+	0.00	+	2.45
047 Mineral Water	0.0207	123.64	122.54	116.63	+	0.90	+	6.01
048 Beverages	0.6303	125.81	125.12	119.60	+	0.55	+	5.19
049 Tobacco Products	1.2998	104.23	104.23	104.23	+	0.00	+	0.00
Textiles & Apparels	10.3289	142.60	142.59	141.68	+	0.01	+	0.65
050 Cotton Yarn	5.2491	164.84	164.84	167.82	+	0.00	-	1.78
051 Nylon Yarn	0.1719	95.24	95.24	95.24	+	0.00	+	0.00
052 Blended Yarn	0.1689	120.22	120.22	118.54	+	0.00	+	1.42
053 Woven Fabrics	0.0128	135.54	135.54	121.08	+	0.00	+	11.94
054 Cotton Fabrics	0.6343	118.41	118.29	107.66	+	0.10	+	9.99
055 Other Fabrics	1.1016	112.30	112.30	110.34	+	0.00	+	1.78
056 Silk & Reyon Fabrics	0.7350	117.76	117.76	112.77	+	0.00	+	4.42
057 Towels	0.1235	117.41	117.41	110.24	+	0.00	+	6.50
058 Blankets	0.0029	96.44	96.44	95.81	+	0.00	+	0.66

Annexure C: Wholesale Price Indices by Major Groups & Commodities

(2015-16=100)

Item and Specification	Weight	Index Numbers			% Change in May 2020 over		
		May 20	Apr 20 19	May	Apr 2020	May 2019	
059 Bed Sheets	0.0913	112.64	112.64	107.31	+	0.00	+ 4.97
060 Quilts	0.0019	109.35	109.35	110.22	+	0.00	- 0.79
061 Woolen Carpets	0.0383	137.01	137.01	125.43	+	0.00	+ 9.23
062 Synthetic Carpets	0.0566	115.72	115.72	104.50	+	0.00	+ 10.74
063 Hosiery Products	0.8832	121.90	121.90	121.45	+	0.00	+ 0.37
064 Readymade Garments	1.0576	131.52	131.52	122.85	+	0.00	+ 7.06
Leather Products	0.7115	118.88	117.90	110.18	+	0.83	+ 7.90
065 Leather Without Hair	0.2973	108.00	105.65	105.65	+	2.22	+ 2.22
066 Other Leather N.E.C	0.2567	111.77	111.77	106.90	+	0.00	+ 4.56
067 Footwears	0.1575	151.00	151.00	124.07	+	0.00	+ 21.71
Other Transportable Goods	22.3979	117.64	134.95	156.85	-	12.83	- 25.00
068 Timber	0.0165	111.96	111.96	111.25	+	0.00	+ 0.64
069 Printing Paper	0.4279	130.70	130.70	107.74	+	0.00	+ 21.31
070 Hard Board	0.1579	146.50	146.50	146.50	+	0.00	+ 0.00
071 Motor Spirit	1.6268	113.64	135.53	153.14	-	16.15	- 25.79
072 Diesel Oil	5.4849	100.68	134.21	171.11	-	24.98	- 41.16
073 Kerosine Oil	0.2151	93.04	151.89	189.78	-	38.75	- <u>50.97</u>
074 Furnace Oil	3.2664	133.06	181.45	276.85	-	26.67	- <u>51.94</u>
075 Mobil Oil	0.7114	122.31	122.31	116.43	+	0.00	+ 5.05
076 Chemicals	1.7720	129.62	129.60	121.21	+	0.02	+ 6.94
077 Dyeing Material	0.1539	146.16	146.16	107.21	+	0.00	+ 36.33
078 Fertilizers	2.8657	95.03	95.02	100.75	+	0.01	- 5.68
079 Pesticides	0.2763	110.91	110.91	107.56	+	0.00	+ 3.11
080 Insecticides	0.1276	111.49	111.49	111.75	+	0.00	- 0.23
081 Paints & Varnishes	0.1916	124.38	124.38	119.14	+	0.00	+ 4.40
082 Medicines	1.1428	145.57	145.46	122.37	+	0.08	+ 18.96
083 Soaps & Detergents	0.8168	111.66	111.63	119.84	+	0.03	- 6.83
084 Auto Tyres	0.2703	121.56	121.54	110.55	+	0.02	+ 9.96
085 Plastic Products	0.4550	108.16	108.16	105.99	+	0.00	+ 2.05
086 Glass sheets	0.2089	145.21	145.21	140.04	+	0.00	+ 3.69
087 Other Glass Articles	0.1635	132.52	132.52	121.45	+	0.00	+ 9.11
088 Ceramics & Sanitary Fixture	0.0244	123.86	123.86	116.84	+	0.00	+ 6.01
089 Bricks, Blocks & Tiles	0.1566	120.62	119.43	106.74	+	1.00	+ 13.00
090 Cement	1.8145	115.31	114.13	109.19	+	1.03	+ 5.60
091 Bed Foam	0.0006	145.73	145.73	115.10	+	0.00	+ 26.61
092 Matches	0.0505	1170.1	1170.1	1127.3	+	0.00	+ 3.79
Metal Product, Machinery & Eq	8.7156	135.94	135.13	117.55	+	0.60	+ 15.64
093 Steel Bar & Sheets	1.4615	165.05	158.57	139.24	+	4.09	+ 18.54
094 Pipe Fittings	0.0780	141.32	141.32	121.94	+	0.00	+ 15.89
095 Steel Products	0.3879	133.35	133.35	118.79	+	0.00	+ 12.26
096 Engines & Motors	0.0046	107.29	107.29	107.29	+	0.00	+ 0.00
097 Vacuum Pumps	0.0155	107.56	107.56	107.56	+	0.00	+ 0.00
098 Air Conditioners	0.0049	112.46	112.46	108.94	+	0.00	+ 3.23
099 Cultivators	0.0551	103.75	103.75	87.11	+	0.00	+ 19.10
100 Chuff Cutter	0.1293	107.14	107.14	102.86	+	0.00	+ 4.16
101 Tractors	0.0028	121.30	121.30	109.22	+	0.00	+ 11.06
102 Lathe Machines	0.0525	203.64	203.64	144.32	+	0.00	+ 41.10
103 Concrete Mixture	0.0107	100.00	100.00	100.00	+	0.00	+ 0.00
104 Fridge,WashM,SewM,Fans,Iron	1.1645	148.98	151.07	128.19	-	1.38	+ 16.22
105 Electric Wires	0.0912	125.73	125.73	118.08	+	0.00	+ 6.48
106 Lighting Equipments	1.4431	116.71	116.71	107.23	+	0.00	+ 8.84
107 Radio & Television	0.1843	100.59	100.59	96.80	+	0.00	+ 3.92
108 Motor Vehicles	0.0244	156.45	156.02	131.70	+	0.28	+ 18.79
109 Motorcycles	0.2570	120.09	120.09	116.61	+	0.00	+ 2.98
110 Bicycles	3.3483	131.36	131.36	110.47	+	0.00	+ 18.91