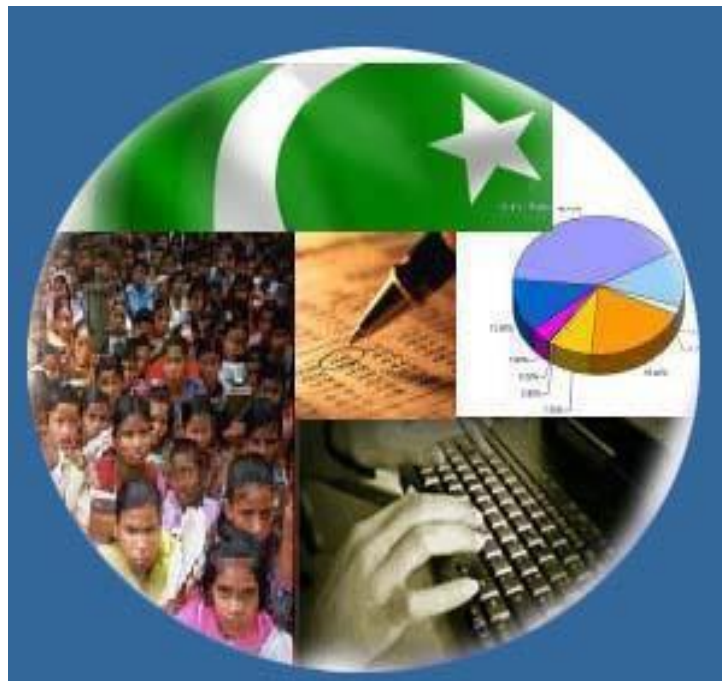




Monthly Review on Price Indices



January, 2020
(Base Year 2015-16)

Government of Pakistan
Ministry of Planning, Development & Special Initiatives
Pakistan Bureau of Statistics
Islamabad

Inflation in Brief

1. **CPI inflation General**, increased by 14.6% on year-on-year basis in January 2020 as compared to an increase of 12.6% in the previous month and 5.6% in January 2019. On month-on-month basis, it increased by 2.0% in January 2020 as compared to a decrease of 0.3% in the previous month and an increase of 0.3% in January 2019.
2. **CPI inflation Urban**, increased by 13.4% on year-on-year basis in January 2020 as compared to an increase of 12.0% in the previous month and 6.2% in January 2019. On month-on-month basis, it increased by 1.7% in January 2020 as compared to a decrease 0.4% in the previous month and an increase of 0.4% in January 2019.
3. **CPI inflation Rural**, increased by 16.3% on year-on-year basis in January 2020 as compared to an increase of 13.6% in the previous month and 4.6% in January 2019. On month-on-month basis, it increased by 2.4% in January 2020 as compared to a decrease of 0.3% in the previous month and a decrease of 0.02% in January 2019.
4. **SPI inflation** on 18.3YoY increased by % in January 2020 as compared to an increase of 18.1% a month earlier and an increase of 3.4% in January 2019. On MoM basis, it increased by 0.5% in January 2020 as compared to a decrease of 2.0% a month earlier and an increase of 0.4% in January 2019.
5. **WPI inflation** on YoY basis increased by 15.4% in January 2020 as compared to an increase of 12.4% a month earlier and an increase of 12.6% in January 2019. WPI inflation on MoM basis it increased by 1.8% in January 2020 as compared to a decrease of 0.3% a month earlier and a decrease of 0.8% in corresponding month of last year i.e. January 2019.
6. Figures 1.a and 1.b show graphically the data of Table 1. Table 1.1 shows "Period Average" and "YoY" percent changes in indices of three years.

Table 1.a General Inflation (%) (Base 2015-16)																		
PERIOD	CPI														SPI**		WPI	
	General						Food				Non-Food							
	National		Urban		Rural		Urban		Rural		Urban		Rural		YoY	MoM	YoY	MoM
	YoY	MoM	YoY	MoM	YoY	MoM	YoY	MoM	YoY	MoM	YoY	MoM	YoY	MoM				
Jan-19	5.6	0.3	6.2	0.4	4.6	0.0	2.6	0.3	1.8	0.0	8.2	0.5	7.0	0.0	3.4	0.4	12.6	-0.8
Feb-19	6.8	0.9	7.2	0.9	6.0	0.9	5.9	2.3	5.2	1.7	8.0	0.1	6.7	0.2	7.2	2.4	13.9	1.6
Mar-19	8.6	2.0	8.9	1.9	8.2	2.2	8.8	2.5	9.3	3.3	9.0	1.5	7.3	1.3	10.5	2.1	16.6	2.2
Apr-19	8.3	0.7	8.4	0.8	8.1	0.6	8.3	1.3	9.3	0.6	8.4	0.6	7.2	0.6	10.0	0.5	17.1	1.8
May-19	8.4	0.6	8.5	0.7	8.3	0.5	9.0	1.3	9.7	0.6	8.3	0.3	7.1	0.4	9.9	0.6	16.5	1.5
Jun-19	8.0	0.5	8.1	0.3	7.9	0.7	7.5	-0.3	9.1	0.7	8.4	0.7	7.0	0.7	9.3	0.9	14.0	0.2
Jul-19	8.4	1.8	8.7	2.0	7.9	1.6	7.9	1.0	9.3	1.7	9.2	2.5	6.7	1.5	8.9	1.0	13.3	3.1
Aug-19	10.5	1.6	10.6	1.5	10.3	1.9	11.9	3.1	12.6	2.9	9.9	0.5	8.4	1.1	12.1	2.7	14.1	1.2
Sep-19	11.4	0.8	11.6	0.7	11.1	0.8	15.0	2.0	15.0	1.8	9.7	0.0	8.0	0.0	14.7	1.9	15.9	0.1
Oct-19	11.0	1.8	10.9	1.6	11.3	2.2	13.7	1.4	14.6	2.6	9.3	1.7	8.7	1.8	15.1	2.7	13.3	2.0
Nov-19	12.7	1.3	12.1	1.0	13.6	1.9	16.6	2.4	19.3	3.4	9.6	0.2	9.0	0.6	20.2	3.7	11.2	-0.8
Dec-19	12.6	-0.3	12.0	-0.4	13.6	-0.3	16.7	-1.7	19.7	-1.1	9.5	0.4	8.8	0.4	18.1	-2.0	12.4	-0.3
Jan-20	14.6	2.0	13.4	1.7	16.3	2.4	19.5	2.7	23.8	3.4	10.2	1.1	10.5	1.5	18.3	0.5	15.4	1.8

** SPI for quintile 1. Digits 0.0* are due to rounding off.

7. **Core inflation** measured by **non-food non-energy Urban CPI** (Core NFNE) increased by 7.9% on (YoY) basis in January 2020 as compared to an increase of 7.5% in the previous month and 7.1% in January 2019. On (MoM) basis, it increased by 1.1% in January 2020 as compared to increase of 0.4% in previous month, and an increase of 0.7% in corresponding month of last year i.e. January 2019.
8. **Core inflation** measured by **non-food non-energy Rural CPI** (Core NFNE) increased by 9.0% on (YoY) basis in January 2020 as compared to an increase of 8.1% in the previous month and 6.6% in January 2019. On (MoM) basis, it increased by 1.0% in January 2020 as compared to an increase of 0.3% in previous month, and an increase of 0.2% in corresponding month of last year i.e. January 2019.
9. **Core inflation**, measured by 20% weighted trimmed mean **Urban CPI** (Core Trimmed) increased by 10.3% on (YoY) basis in January 2020 as compared to 9.6% in the previous month and by 6.7% in January 2019. On (MoM) basis, it increased by 1.2% in January 2019 as compared to an increase of 0.2% in the previous month and an increase of 0.6% in corresponding month of last year i.e. January 2019.
10. **Core inflation**, measured by 20% weighted trimmed mean **Rural CPI** (Core Trimmed) increased by 12.7% on (YoY) basis in January 2020 as compared to 10.8% in the previous month and by 6.1% in January 2019. On (MoM) basis, it increased by 1.9% in January 2020 as compared to an increase of 0.3% in the previous month and an increase of 0.4% in corresponding month of last year i.e. January 2019.

Table 1.b Core Inflation (%) (Base 2015-16)

Period	NFNE				Trimmed			
	Urban		Rural		Urban		Rural	
	YoY	MoM	YoY	MoM	YoY	MoM	YoY	MoM
Jan-19	7.1	0.7	6.6	0.2	6.7	0.6	6.1	0.4
Feb-19	7.1	0.2	6.4	0.2	6.7	0.2	6.2	0.3
Mar-19	7.2	0.8	6.5	0.6	7.3	0.8	6.5	0.6
Apr-19	7.0	1.1	6.8	1.2	7.4	1.1	7.3	0.8
May-19	7.2	0.5	6.8	0.4	7.3	0.5	7.2	0.5
Jun-19	7.3	0.2	6.7	0.3	7.3	0.4	7.2	0.7
Jul-19	8.2	1.8	7.8	2.0	7.8	1.4	7.4	1.6
Aug-19	8.5	0.4	8.8	1.0	8.5	0.6	8.7	1.2
Sep-19	8.4	0.4	8.8	0.3	9.3	0.6	9.6	0.6
Oct-19	7.7	0.5	8.6	0.7	8.9	0.5	9.4	0.7
Nov-19	7.5	0.3	8.4	0.5	9.5	0.4	10.7	0.7
Dec-19	7.5	0.4	8.1	0.3	9.6	0.2	10.8	0.3
Jan-20	7.9	1.1	9.0	1.0	10.3	1.2	12.7	1.9

Table 1.1 Period Average and YoY % Change

INDEX	Average July- January % changes			January over January % changes		
	2019-2020	2018-2019	2017-2018	2019-2020	2018-2019	2017-2018
CPI (National)	11.60	5.90	4.81	14.56	5.55	5.24
CPI(Urban)	11.32	6.27	5.27	13.41	6.16	5.44
CPI(Rural)	12.02	5.34	4.11	16.34	4.64	4.94
SPI	15.35	2.12	3.51	18.26	3.39	3.96
WPI	13.61	16.27	3.64	15.36	12.58	6.36

Figure 1: UCPI Inflation YoY, Special Indices

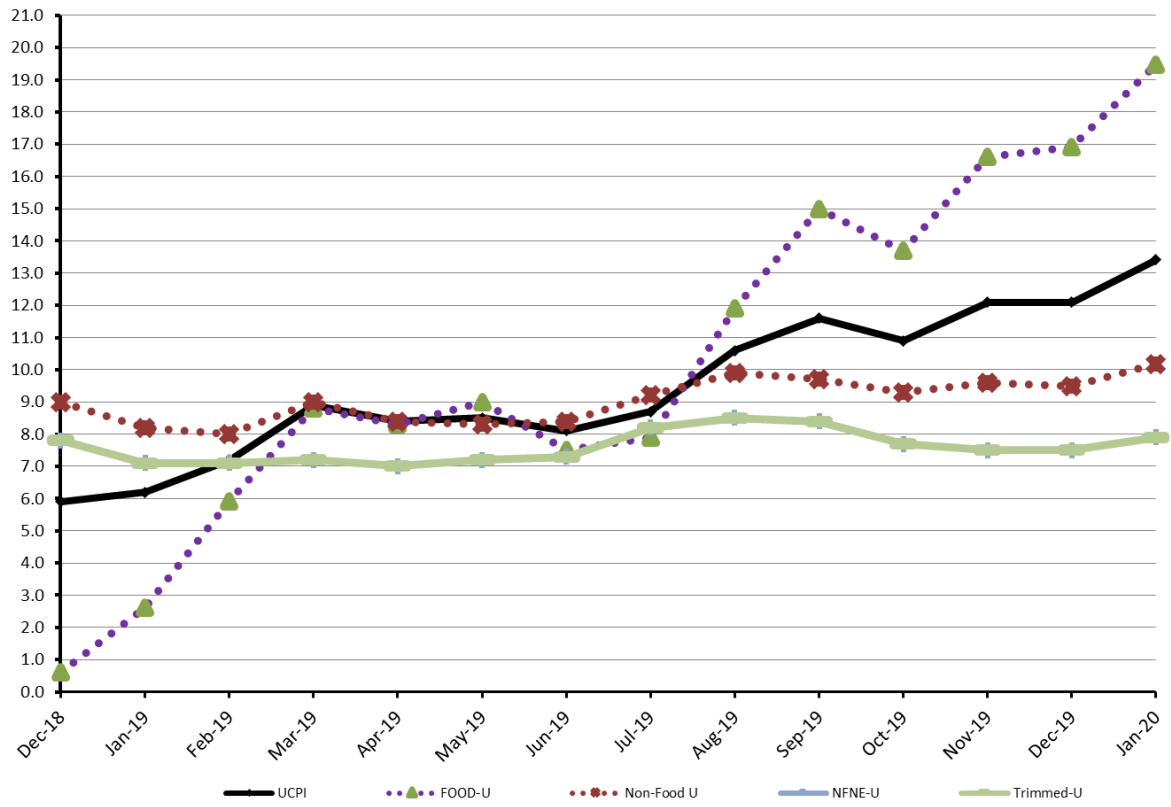
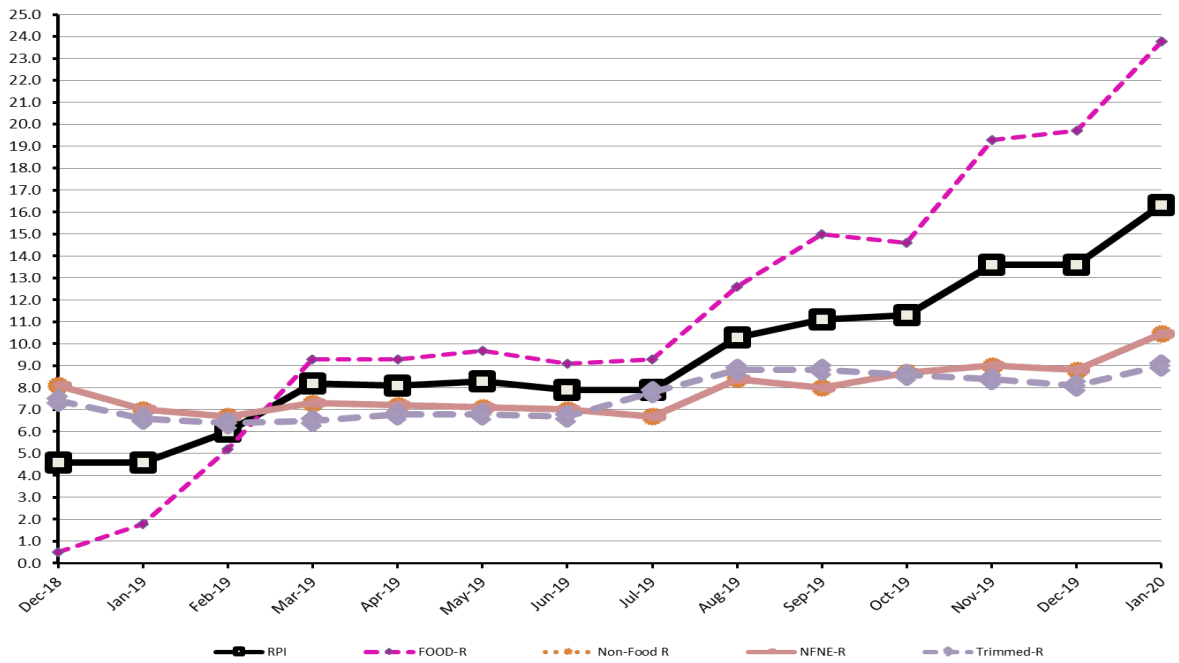


Figure 2: RCPI Inflation YoY, Special Indices



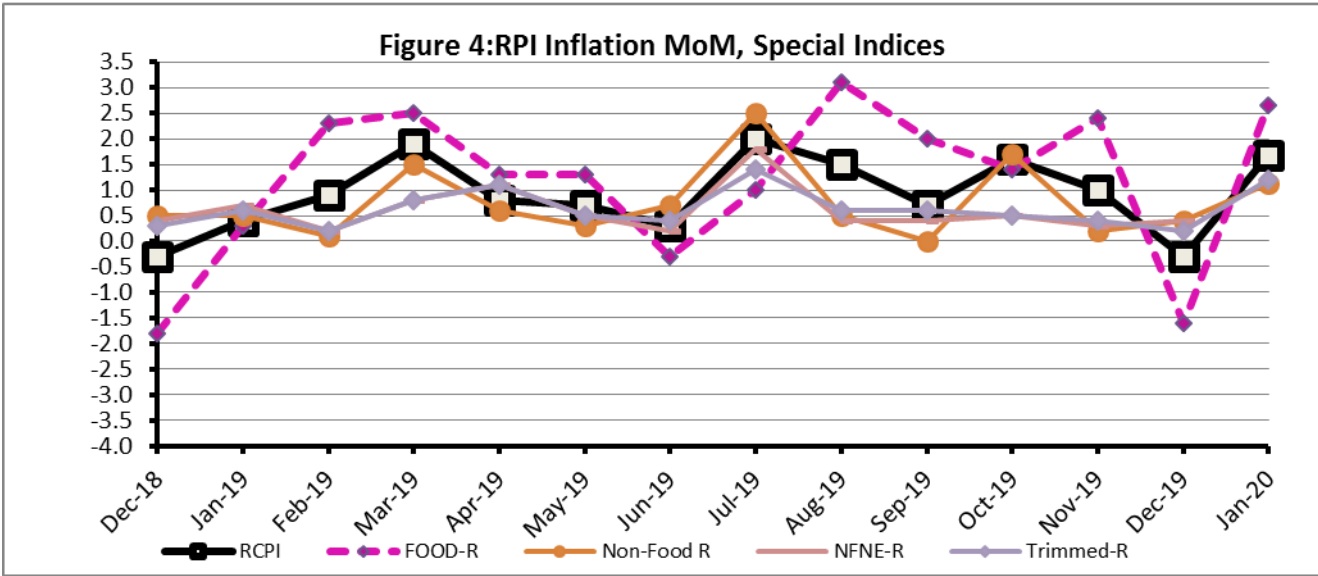
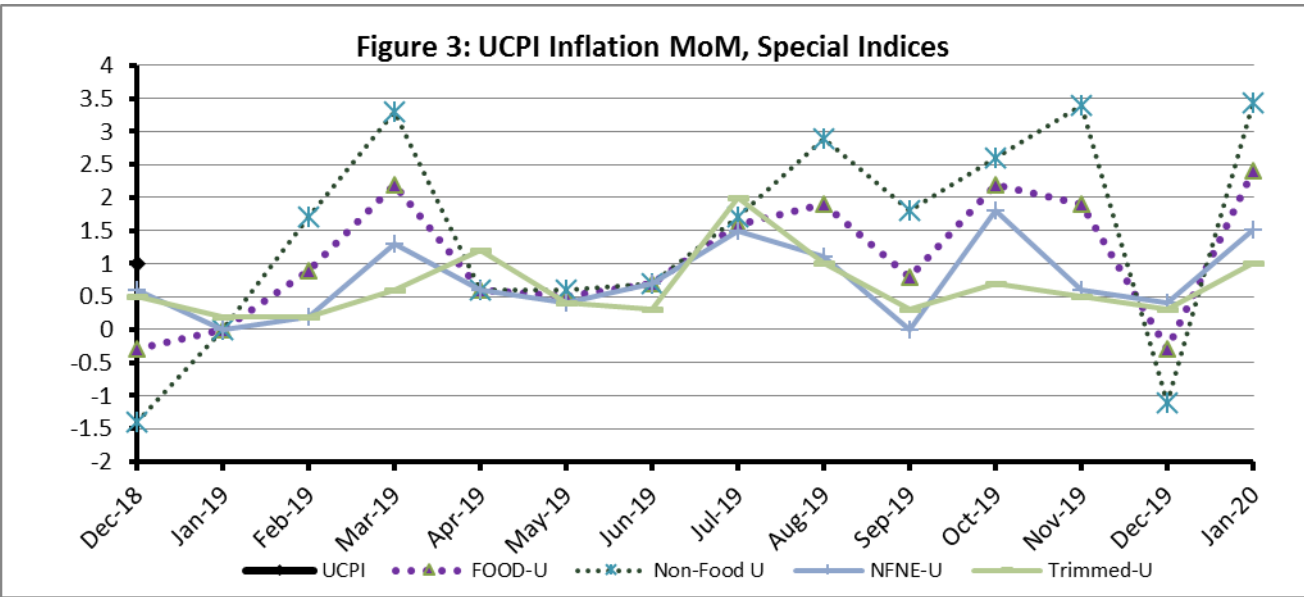


Figure 5: CPI Y.o.Y (National, Urban, Rural)

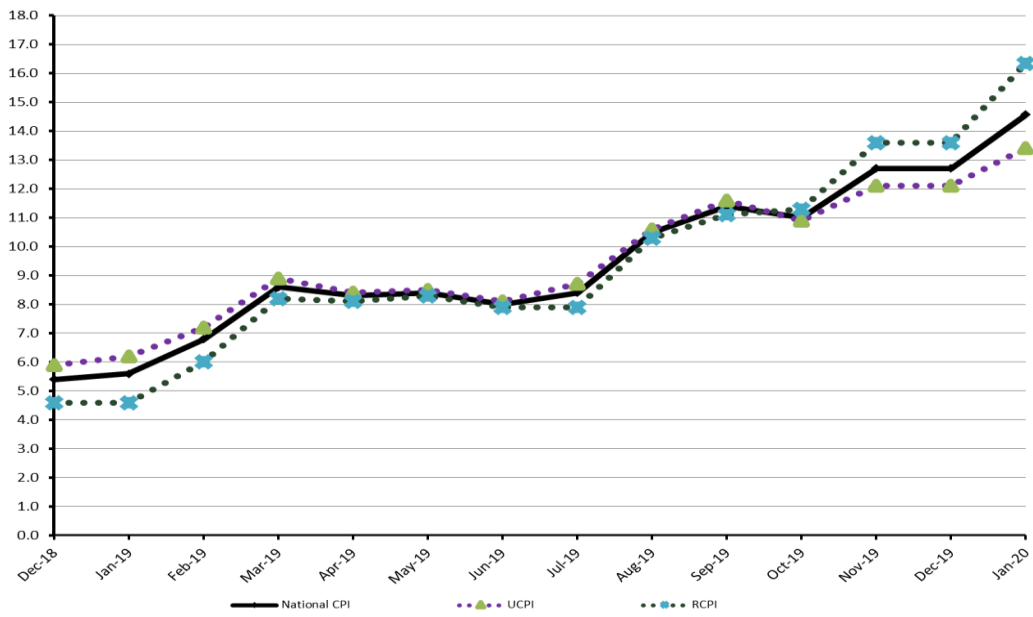
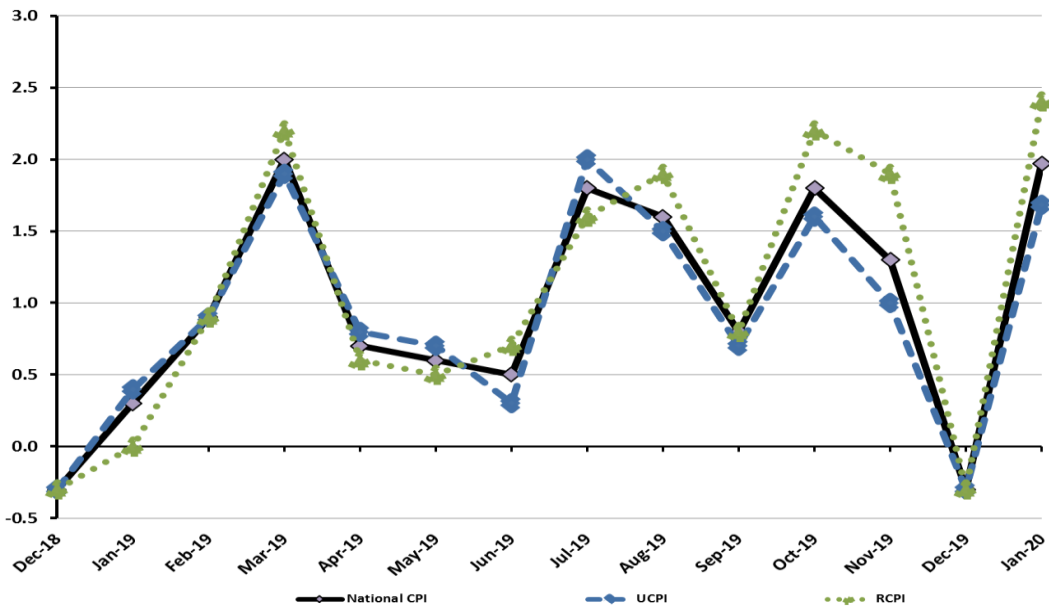


Figure 6: CPI M.o.M (National, Urban, Rural)



I. National Consumer Price Index (N-CPI)

The **National Consumer Price Index** of January 2020 is increased by 1.97% over December 2019 and increased by 14.56% over corresponding month of the last year i.e. January 2019.

Table 1: Consumer Price Index (National) by Group of Commodities and Services (Base 2015-16)

N o	Group	Group Weight (%)	Indices			% Change January 2020 Over		Impact (In % points) Jan 2020 Over	
			Jan 2020	Dec 2019	Jan 2019	Dec 2019	Jan 2019	Dec 2019	Jan 2019
	General	100.00	133.03	130.45	116.12	1.97	14.56	1.97	14.56
1.	Food & Non-alcoholic Bev.	34.58	134.78	130.37	109.00	3.39	23.65	1.17	7.68
	<i>Non-perishable Food Items</i>	29.60	129.88	124.97	111.90	3.93	16.07	1.11	4.58
	<i>Perishable Food Items</i>	4.99	163.89	162.44	91.86	0.89	78.42	0.06	3.09
2.	Alcoholic Bev. & Tobacco	1.02	135.92	135.48	115.28	0.32	17.90	0.00	0.18
3.	Clothing & Footwear	8.60	129.78	128.57	118.45	0.94	9.57	0.08	0.84
4.	Housing, Water, Electricity, Gas & Fuels	23.63	132.38	129.89	120.78	1.92	9.61	0.45	2.36
5.	Furnishing & Household Equipment Maintenance	4.10	126.27	125.72	114.67	0.44	10.11	0.02	0.41
6.	Health	2.79	137.39	136.60	122.91	0.58	11.79	0.02	0.35
7.	Transport	5.91	145.22	143.91	122.46	0.91	18.58	0.06	1.16
8.	Communication	2.21	106.93	106.92	102.84	0.02	3.98	0.00	0.08
9.	Recreation & Culture	1.59	118.91	118.77	111.64	0.12	6.51	0.00	0.10
10.	Education	3.79	141.98	141.95	132.31	0.02	7.31	0.00	0.32
11.	Restaurants & Hotels	6.92	128.22	126.29	119.43	1.53	7.36	0.10	0.52
12.	Miscellaneous	4.87	133.53	131.75	119.86	1.35	11.40	0.07	0.57

II. Urban Consumer Price Index (UCPI)

The **Urban Consumer Price Index** of January 2020 is increased by 1.68% over December 2019 and increased by 13.41% over corresponding month of the last year i.e. January 2019.

Table 2 : Consumer Price Index (Urban) by Group of Commodities and Services (Base 2015-16)

No	Group	Group Weight (%)	Indices			% Change January 2020 Over		Impact (In % points) Jan 2020 Over	
			Jan 2020	Dec 2019	Jan 2019	Dec 2019	Jan 2019	Dec 2019	Jan 2019
	General	100.00	132.77	130.57	117.07	1.68	13.41	1.68	13.41
1.	Food & Non-alcoholic Bev.	30.42	132.91	128.95	108.92	3.07	22.03	0.92	6.23
	Non-perishable Food Items	25.97	128.42	123.97	111.44	3.59	15.24	0.89	3.77
	Perishable Food Items	4.46	159.07	157.99	94.24	0.68	68.79	0.04	2.47
2.	Alcoholic Bev.& Tobacco	0.85	143.25	142.70	122.68	0.39	16.77	0.00	0.15
3.	Clothing & Footwear	8.01	127.13	126.10	116.62	0.82	9.01	0.06	0.72
4.	Housing, Water, Electricity, Gas & Fuels	27.03	133.62	131.62	121.83	1.52	9.68	0.41	2.72
5.	Furnishing & Household Equipment Maintenance	4.09	126.84	126.59	114.93	0.20	10.36	0.01	0.42
6.	Health	2.31	137.89	137.10	123.71	0.58	11.46	0.01	0.28
7.	Transport	6.14	146.34	145.01	122.55	0.92	19.41	0.06	1.25
8.	Communication	2.35	108.19	108.18	102.76	0.01	5.28	0.00	0.11
9.	Recreation & Culture	1.73	117.24	117.22	110.53	0.02	6.07	0.00	0.10
10.	Education	4.88	144.71	144.67	134.64	0.03	7.48	0.00	0.42
11.	Restaurants & Hotels	7.41	127.33	124.97	119.55	1.89	6.51	0.13	0.49
12.	Miscellaneous	4.77	133.78	132.17	120.88	1.22	10.67	0.06	0.53

Main contributors to month-on-month and year-on-year percentage changes are given below and detail is given in Annexure A.

1. MONTH-ON-MONTH Top few commodities which varied from previous month are given below: -

Food Items Increased: Pulse moong (19.74%), Pulse gram(18.2%), Chicken (17.53%), Eggs (14.28%), Wheat(12.63%), Besan(12.09%), Fresh vegetables(11.7%), Pulse mash(10.29%), Gur(9.49%), Beans(8.09%), Wheat flour (7.42%), Pulse masoor(7.33%), Condiments and Spices(7.15%), Gram whole (6.68%), Sugar(5.07%), Fresh fruits(3.93%), Mustard oil(2.87%), Wheat products(2.64%), Vegetable ghee(2.18%), Rice(1.2%), Fish(1.19%) and Dry fruits(1.09%).
Decreased: Onions (18.37%), Tomatoes (8.36%) and Potatoes (3.69%).

Non-food Items Increased: Liquefied Hydrocarbons (26.17%), Marriage Hall Charges (5.58%), Woolen cloth (3.08%), Woolen readymade garments (2.51%), Motor fuel (1.94%), House rent (1.88%), Tailoring (1.4%) and Doctor (MBBS) clinic fee (1.32%).
Decreased: Electricity charges (2.18%).

YEAR-ON-YEAR: Top few commodities which varied from previous year i.e. January 2019 are given below:-

Food Items Increased: Tomatoes(157.72%), Onions(125.32%), Fresh vegetables(93.6%), Potatoes(87.3%), Pulse moong (79.12%), Pulse mash(48.61%), Gur(43.31%), Wheat(36.13%), Pulse gram(27.31%), Sugar(26.29%), Condiments and Spices(24.43%), Wheat flour (24.06%), Besan(22.94%), Chicken (22.56%), Beans(20.56%), Pulse masoor(19.88%), Wheat products(18.62%), Eggs (18.05%), Vegetable ghee(17.56%), Cooking oil(15.44%), Meat(13.43%), Dry fruits(12.95%), Fish(11.9%), Milk powder (11.43%) and Mustard oil(10.99%).

Non-food Items Increased: Gas charges(54.84%), Motor fuel(25.69%), Construction input items(18.04%), Motor vehicles(17.35%), Liquefied Hydrocarbons(14.06%), Electricity charges(13.99%), Woolen cloth(13.76%), Mechanical services(13.52%), Cotton cloth(12.81%), Doctor (MBBS) clinic fee(12.67%), Transport services(11.64%) and Motor vehicle accessories(10.56%).

III. Rural Consumer Price Index (RCPI)

The Rural Consumer Price Index of January 2020 is increased by 2.40% over December 2019 and increased by 16.34% over corresponding month of the last year i.e. January 2019.

Table 3 : Consumer Price Index (Rural) by Group of Commodities and Services (Base 2015-16)

No	Group	Group Weight (%)	Indices			% Change January 2020 Over		Impact (In % points) Jan 2020 Over	
			Jan 2020	Dec 2019	Jan 2019	Dec 2019	Jan 2019	Dec 2019	Jan 2019
	General	100.00	133.42	130.28	114.68	2.41	16.34	2.41	16.34
1.	Food & Non-alcoholic Bev.	40.87	136.89	131.96	109.10	3.74	25.47	1.55	9.90
	Non-perishable Food Items	35.08	131.51	126.08	112.41	4.31	16.99	1.46	5.84
	Perishable Food Items	5.79	169.50	167.62	89.09	1.12	90.26	0.08	4.06
2.	Alcoholic Bev. & Tobacco	1.28	128.52	128.20	107.81	0.25	19.21	0.00	0.23
3.	Clothing & Footwear	9.48	133.17	131.72	120.79	1.10	10.25	0.11	1.02
4.	Housing, Water, Electricity, Gas & Fuels	18.49	129.64	126.06	118.45	2.84	9.45	0.51	1.80
5.	Furnishing & Household Equipment Maintenance	4.10	125.42	124.41	114.29	0.81	9.74	0.03	0.40
6.	Health	3.51	136.90	136.10	122.11	0.59	12.11	0.02	0.45
7.	Transport	5.56	143.36	142.07	122.32	0.91	17.20	0.06	1.02
8.	Communication	1.99	104.70	104.67	102.98	0.03	1.67	0.00	0.03
9.	Recreation & Culture	1.38	122.07	121.71	113.74	0.30	7.32	0.00	0.10
10.	Education	2.13	132.56	132.56	124.26	0.00	6.68	0.00	0.15
11.	Restaurants & Hotels	6.19	129.84	128.68	119.22	0.90	8.91	0.05	0.57
12.	Miscellaneous	5.02	133.16	131.15	118.39	1.53	12.48	0.08	0.65

Main contributors to month-on-month and year-on-year percentage changes are given below and detail is given in Annexure A.

1. **MONTH-ON-MONTH** Top few commodities which varied from previous month are given below: -

Food Items Increased: Pulse Moong(18.7%), Chicken(17.3%), Fresh Vegetables(15.39%), Pulse Gram(14.21%), Eggs(12.89%), Gur(12.84%), Besan(9.97%), Wheat(9.07%), Pulse Masoor(6.77%), Vegetable ghee(6.55%), Cooking oil(6.48%), Pulse Mash(6.31%), Wheat Flour(6.16%), Mustard oil(5.13%), Condiments and Spices(4.85%), Beans(4.54%), Sugar(4.36%), Gram Whole(4.22%), Dry fruits(3.54%), Butter(2.49%), Potatoes(1.96%), Meat(1.82%), Rice(1.77%), Wheat Products(1.67%), Milk powder(1.4%) and Readymade Food(1.1%).

Decreased: Onions (20.52%), Tomatoes (8.22%), Fish (0.94%) and Fresh fruits (0.24%).

Non-food Items Increased: Liquefied Hydrocarbons(17.55%), Woolen Readymade Garments(3.76%), Cleaning and Laundering(2.37%), Motor Fuels(2.06%), Readymade Garments(1.87%), Doctor Clinic Fee(1.22%) and Tailoring(1.07%).

Decreased: Electricity Charges(2.18%) and Construction Input Items(0.32%) .

YEAR-ON-YEAR: Top few commodities which varied from previous year i.e. January 2019 are given below:-

Food Items Increased: Tomatoes(211.18%), Onions(136.63%), Potatoes(111.24%), Fresh Vegetables(104.47%), Pulse Moong(83.43%), Gur(46.16%), Pulse Mash(41.07%), Wheat(32.18%), Cooking oil(29.29%), Condiments and Spices(26.95%), Sugar(26.39%), Vegetable ghee(25.3%), Pulse Gram(25.23%), Wheat Flour(25.21%), Pulse Masoor(22.64%), Beans(21.24%), Chicken(18.49%), Besan(17.79%), Milk powder(13.86%), Mustard oil(13.45%), Eggs(12.73%), Fresh fruits(12.52%), Wheat Products(12%), Meat(11.7%), Rice(11.24%), Fish(11.17%) and Dry fruits(10.7%).

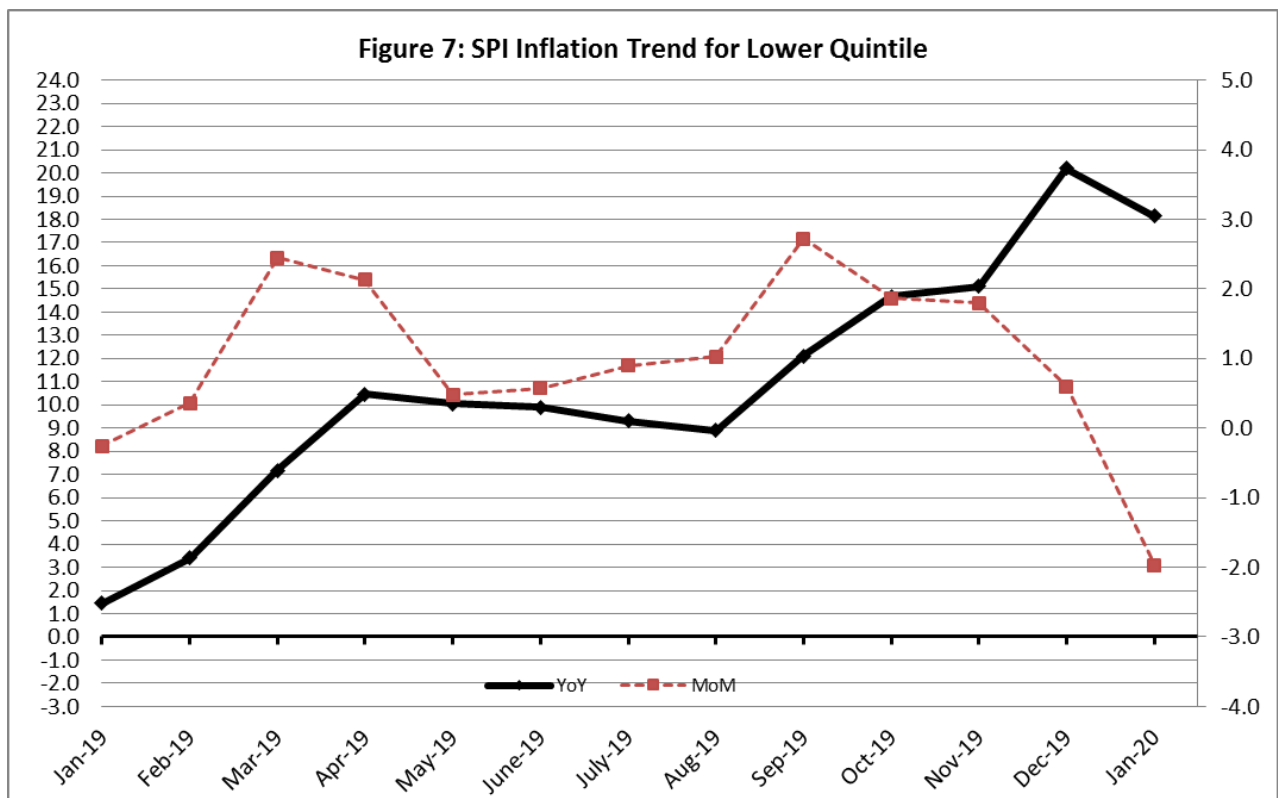
Non-food Items Increased: Motor Fuels(26.4%), Doctor Clinic Fee(18.35%), Drugs and Medicines(15.31%), Medical Tests(14.49%), Electricity Charges(13.99%), Cotton Cloth(13.03%), Motor Vehicles(12.5%), Readymade Garments(12.23%), Liquefied Hydrocarbons(12.07%), Motor Vehicles Accessories(11.51%) and Construction Wage Rates(10.98%).

IV. Sensitive Price Indicator

Quintile-wise percentage changes YoY and MoM are given below in Table 3. The series from January 2019 to January 2020 is also graphed below in Figure 7.

Table 4: Sensitive Price Indicator (Base 2015-16)					
Quintiles	Indices			% Change January 2020 Over	
	January 2020	December 2019	January 2019	December 2019	January 2019
1	134.74	134.13	113.94	0.45	18.26
2	130.55	129.92	109.52	0.48	19.20
3	132.41	131.43	108.54	0.75	21.99
4	129.57	128.39	106.81	0.92	21.31
5	133.62	132.03	112.62	1.20	18.65
Combined	131.61	130.36	110.11	0.96	19.53

Table 4.1 : Weekly Percentage Change of SPI During January-2020					
Quintiles	% Change with Previous week				
	02-01-2020	09-01-2020	16-01-2020	23-01-2020	30-01-2020
Quintile 1	0.90	0.45	-0.43	-0.55	-0.31
Combined	0.74	0.36	-0.18	-0.40	-0.36



V. Wholesale Price Index

The Wholesale Price Index for January, 2020 increased by 1.83% over December 2019. It increased by 15.36% over the corresponding month of the last year. YoY and MoM movements, from January, 2019 to January, 2020 are also graphed below in Figure 4.

Table 5 : Wholesale Price Index by Group of Commodities (Base 2015-16)

No.	Group	Group Weight (%)	Indices			% Change January 2020 Over		Impact (In % points) Jan 2020 Over	
			Jan 2020	Dec 2019	Jan 2019	Dec 2019	Jan 2019	Dec 2019	Jan 2019
	General	100.00	144.34	141.75	125.12	1.83	15.36	1.83	15.36
1.	Agriculture, Forestry & Fishery Products	25.77	142.32	139.17	121.94	2.26	16.71	0.57	4.20
2.	Ores & Minerals, Electricity, Gas & Water	12.01	169.13	169.06	133.91	0.04	26.30	0.01	3.38
3.	Food Products, Beverages & Tobacco, Textiles, Apparel & Leather Products	31.11	132.23	130.41	118.27	1.40	11.80	0.40	3.47
	i. Food Products, Bev. & Tobacco	20.07	127.70	124.83	111.99	2.30	14.03	0.41	2.52
	ii. Textiles and Apparel	10.33	142.44	142.51	131.15	-0.05	8.61	-0.01	0.93
	iii. Leather Products	0.71	111.94	111.94	108.48	0.00	3.19	0.00	0.02
4.	Other Transportable Goods except Metal Products, Machinery & Equipment	22.40	154.62	149.35	137.26	3.53	12.65	0.83	3.11
5.	Metal Products, Machinery & Equipment	8.72	132.99	132.68	115.68	0.23	14.96	0.02	1.21

Main contributors to month-on-month and year-on-year percentage changes are given below and detail is given in Annexure B.

1. **MONTH-ON-MONTH** Top few commodities which varied from previous month i.e. December, 19 are given below: -

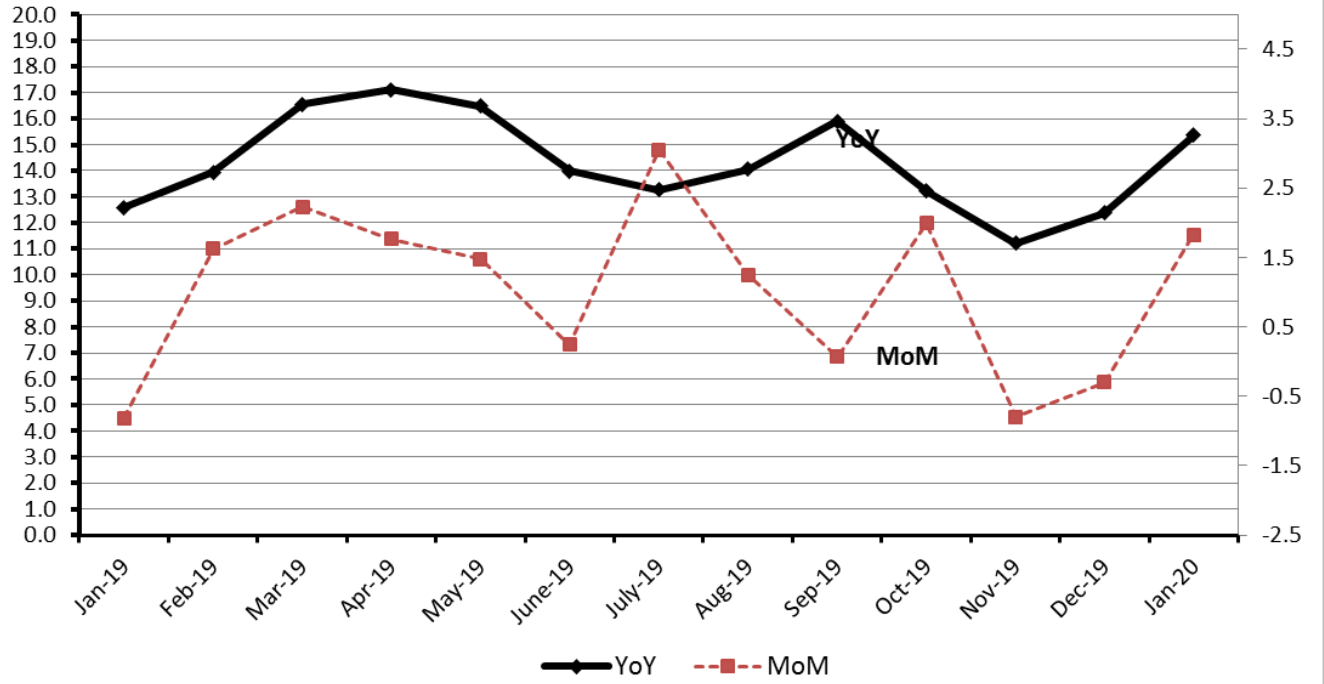
Increased: Poultry(20.01%), Sorghum / Jowar(17.08%), Other Cereal Flour(12.37%), Furnace Oil(11.66%), Wheat (10.97%), Hides, Skins & Fur Skins, Raw(10.61%), Bed Foam(9.77%), Eggs(9.43%), Pulses(8.83%), Other Oil Seeds(7.79%), Cotton Seeds(7.71%), Wheat Flour(7.32%), Sugar (6.85%), Edible Roots / Potatoes(6.8%), Vegetable Ghee(6.46%), Millet / Bajra(5.12%) and Maize(5.12%).

Decreased: Vegetables (2.25%) and Electrical Energy (1.4%).

2. **YEAR-ON-YEAR** Top few commodities which varied from previous year i.e. January, 2019 are given below: -

Increased: Edible Roots / Potatoes(142.93%), Vegetables(117.19%), Stimulant & Spice Crops(69.74%), Dyeing Material(41.61%), Cotton Seeds(38.62%), Wheat (33.71%), Sorghum / Jowar(30.03%), Natural Gas Liquefied(29.36%), Motor Spirit(29.29%), Sugar (28.31%), Pulses(26.97%), Poultry(26.39%), Motor Vehicles(25.53%), Bed Foam(25.18%), Wheat Flour(25.03%), Electrical Energy(24.74%), Other Cereal Flour(24.35%), Vegetable Ghee(23.96%), Printing Paper(21.31%), Pipe Fittings(20.66%), Other Oil Seeds(20.65%) and Medicines(20.4%).

Figure 8: WPI Inflation



Annexure A:CPI (Urban) Index Numbers by Commodity Groups & Commodities (2015-16=100)

Item and Specification	Weight	Index Numbers			% Change in Jan 2020 over			
		Jan 20	Dec 19	Jan 19	Dec 2019	Jan 2019		
General	100.0000	132.77	130.57	117.07	+	1.68	+	13.41
Food and non-alcoholic Bevera	30.4215	132.91	128.95	108.92	+	3.07	+	22.03
01 Wheat	0.6120	141.72	125.83	104.11	+	12.63	+	36.13
02 Wheat flour	3.0075	127.48	118.67	102.76	+	7.42	+	24.06
03 Wheat products	0.0936	124.44	121.24	104.91	+	2.64	+	18.62
04 Besan	0.0830	129.14	115.21	105.04	+	12.09	+	22.94
05 Rice	1.1804	131.12	129.56	121.90	+	1.20	+	7.56
06 Bakery and confectionary	0.4770	124.48	124.03	108.62	+	0.36	+	14.60
07 Nimco	0.1224	120.46	119.29	109.61	+	0.98	+	9.90
08 Meat	2.0411	141.84	140.77	125.05	+	0.76	+	13.43
09 Chicken	1.3631	116.21	98.88	94.82	+	17.53	+	22.56
10 Fish	0.3855	127.90	126.39	114.30	+	1.19	+	11.90
11 Milk fresh	7.1070	120.51	120.26	111.12	+	0.21	+	8.45
12 Milk products	0.6407	122.98	122.93	114.04	+	0.04	+	7.84
13 Milk powder	0.3106	125.19	123.96	112.35	+	0.99	+	11.43
14 Eggs	0.5083	156.28	136.75	132.38	+	14.28	+	18.05
15 Butter	0.0932	157.50	148.69	113.79	+	5.93	+	38.41
16 Mustard oil	0.0120	118.51	115.20	106.78	+	2.87	+	10.99
17 Cooking oil	1.1016	133.08	132.43	115.28	+	0.49	+	15.44
18 Vegetable ghee	1.0324	133.96	131.10	113.95	+	2.18	+	17.56
19 Dry fruits	0.3299	133.41	131.97	118.11	+	1.09	+	12.95
20 Fresh fruits	1.4363	115.72	111.34	106.68	+	3.93	+	8.47
21 Pulse masoor	0.1624	96.80	90.19	80.75	+	7.33	+	19.88
22 Pulse moong	0.1697	140.72	117.52	78.56	+	19.74	+	<u>79.12</u>
23 Pulse mash	0.1152	95.81	86.87	64.47	+	10.29	+	48.61
24 Pulse gram	0.1660	132.12	111.78	103.78	+	18.20	+	27.31
25 Gram whohe	0.0912	128.87	120.80	119.75	+	6.68	+	7.62
26 Beans	0.0408	130.61	120.84	108.34	+	8.09	+	20.56
27 Potatoes	0.4496	179.98	186.87	96.09	-	3.69	+	<u>87.30</u>
28 Onions	0.5928	138.91	170.16	61.65	-	18.37	+	<u>125.32</u>
29 Tomatoes	0.3459	250.86	273.76	97.34	-	8.36	+	<u>157.72</u>
30 Fresh vegetables	1.5306	176.54	158.05	91.19	+	11.70	+	<u>93.60</u>
31 Sugar	1.1130	118.85	113.11	94.11	+	5.07	+	26.29
32 Gur	0.0379	137.23	125.33	95.76	+	9.49	+	43.31
33 Honey	0.1017	116.76	116.40	110.60	+	0.31	+	5.57
34 Sweetmeat	0.3535	135.78	135.16	121.99	+	0.46	+	11.30
35 Ice cream	0.1044	124.87	124.12	111.80	+	0.60	+	11.69
36 Condiments and Spices	1.3340	155.47	145.09	124.95	+	7.15	+	24.43
37 Dessert preparation	0.0419	118.23	117.50	110.96	+	0.62	+	6.55
38 Tea	0.8427	140.63	140.39	128.18	+	0.17	+	9.71
39 Beverages	0.8906	122.14	121.80	109.63	+	0.28	+	11.41
Alcoholic Beverages, Tobacco	0.8540	143.25	142.70	122.68	+	0.39	+	16.77
40 Cigarettes	0.7167	134.71	134.65	110.96	+	0.04	+	21.40
41 Pan prepared	0.1373	187.81	184.70	183.84	+	1.68	+	2.16
Clothing and footwear	8.0096	127.13	126.10	116.62	+	0.82	+	9.01
42 Cotton cloth	2.2227	127.02	126.56	112.60	+	0.36	+	12.81
43 Woolen cloth	0.8361	124.66	120.94	109.58	+	3.08	+	13.76
44 Readymade garments	1.3196	127.58	127.38	121.27	+	0.16	+	5.20
45 Woolen readymade garments	0.4307	126.89	123.78	116.46	+	2.51	+	8.96
46 Tailoring	1.0741	136.53	134.64	125.87	+	1.40	+	8.47
47 Hosiry	0.4070	125.84	125.57	117.33	+	0.22	+	7.25
48 Dopatta	0.1713	121.05	120.01	110.75	+	0.87	+	9.30
49 Cleaning and laundring	0.0665	129.91	129.05	119.57	+	0.67	+	8.65
50 Footware	1.4816	122.49	122.39	116.17	+	0.08	+	5.44
Housing, water, Elec., Gas an	27.0332	133.62	131.62	121.83	+	1.52	+	9.68
51 House rent	19.2558	129.68	127.29	122.77	+	1.88	+	5.63
52 Construcion input items	0.3765	142.98	143.10	121.13	-	0.08	+	18.04
53 Construction wage rates	0.2025	146.43	146.32	133.99	+	0.08	+	9.28
54 Water supply	0.5269	131.54	131.54	119.08	+	0.00	+	10.46
55 Garbage collection	0.1064	154.80	154.80	143.43	+	0.00	+	7.93
56 Electricity charges	4.5562	124.87	127.65	109.54	-	2.18	+	13.99
57 Gas charges	1.0807	216.94	216.94	140.11	+	0.00	+	<u>54.84</u>

Annexure A:CPI (Urban) Index Numbers by Commodity Groups & Commodities (2015-16=100)

Item and Specification	Weight	Index Numbers			% Change in Jan 2020 over	
		Jan 20	Dec 19	Jan 19	Dec 2019	Jan 2019
58 Liquified Hydrocarbons	0.5064	186.07	147.47	163.14	+ 26.17	+ 14.06
59 Solid Fuel	0.4218	114.22	111.28	108.37	+ 2.64	+ 5.40
<i>Furnishing and household equi</i>	4.0937	126.84	126.59	114.93	+ 0.20	+ 10.36
60 Furniture and furnishing	0.4750	127.19	126.90	116.41	+ 0.23	+ 9.26
61 Carpets	0.0308	107.45	107.52	104.66	- 0.07	+ 2.67
62 Household textiles	0.3420	124.51	124.36	120.21	+ 0.12	+ 3.58
63 Household equipments	1.0032	125.47	125.07	114.05	+ 0.32	+ 10.01
64 Plastic products	0.0536	115.88	115.87	111.80	+ 0.01	+ 3.65
65 Major tools & equipments	0.0084	119.44	119.10	110.85	+ 0.29	+ 7.75
66 Washing soap/detergents/match	1.4112	127.18	126.88	115.31	+ 0.24	+ 10.29
67 Household servant	0.7695	130.45	130.45	112.81	+ 0.00	+ 15.64
<i>Health</i>	2.3098	137.89	137.10	123.71	+ 0.58	+ 11.46
68 Drugs and medicines	1.0735	137.56	136.73	116.19	+ 0.61	+ 18.39
69 Therapeutic Appliances and Eq	0.0054	107.01	107.01	106.87	+ 0.00	+ 0.13
70 Doctor (MBBS) clinic fee	0.4044	163.19	161.06	144.84	+ 1.32	+ 12.67
71 Dental services	0.0156	115.98	115.64	117.09	+ 0.29	- 0.95
72 Medical tests	0.2367	123.91	123.64	117.82	+ 0.22	+ 5.17
73 Hospitals services	0.5742	127.35	127.34	125.67	+ 0.01	+ 1.34
<i>Transport</i>	6.1368	146.34	145.01	122.55	+ 0.92	+ 19.41
74 Motor vehicles	0.8097	146.36	145.41	124.72	+ 0.65	+ 17.35
75 Motor vehicle accessories	0.1941	126.72	125.88	114.62	+ 0.67	+ 10.56
76 Motor fuel	2.9088	161.69	158.62	128.64	+ 1.94	+ 25.69
77 Mechanical services	0.4290	128.99	128.45	113.63	+ 0.42	+ 13.52
78 Motor vehicle tax	0.0482	126.72	126.72	124.01	+ 0.00	+ 2.19
79 Transport services	1.7470	127.76	128.87	114.44	- 0.86	+ 11.64
<i>Communication</i>	2.3536	108.19	108.18	102.76	+ 0.01	+ 5.28
80 Postal services	0.0190	147.05	147.05	147.05	+ 0.00	+ 0.00
81 Communication apparatus	0.4524	118.58	118.50	107.74	+ 0.07	+ 10.06
82 Communication Services	1.8822	105.30	105.30	101.11	+ 0.00	+ 4.14
<i>Recreation and culture</i>	1.7301	117.24	117.22	110.53	+ 0.02	+ 6.07
83 Recreation and culture	0.6478	108.56	108.53	107.04	+ 0.03	+ 1.42
84 Text books	0.6655	117.06	117.05	106.34	+ 0.01	+ 10.08
85 Newspapers	0.0716	151.55	151.55	145.89	+ 0.00	+ 3.88
86 stationery	0.3452	126.74	126.73	117.84	+ 0.01	+ 7.55
<i>Education</i>	4.8807	144.71	144.67	134.64	+ 0.03	+ 7.48
87 Education	4.8807	144.71	144.67	134.64	+ 0.03	+ 7.48
<i>Restaurants and hotels</i>	7.4050	127.33	124.97	119.55	+ 1.89	+ 6.51
88 Readymade food	5.5235	125.84	124.91	117.69	+ 0.74	+ 6.92
89 Marriage Hall Charges	1.7514	133.14	126.10	126.00	+ 5.58	+ 5.67
90 Accommodation Services	0.1301	112.40	112.40	111.78	+ 0.00	+ 0.55
<i>Misc. goods and services</i>	4.7720	133.78	132.17	120.88	+ 1.22	+ 10.67
91 Personal Grooming Services	0.8001	124.01	123.67	116.21	+ 0.27	+ 6.71
92 Electrical Appliances for Per	0.0465	116.78	116.54	113.93	+ 0.21	+ 2.50
93 Appliances/Articles/Products	2.9807	125.91	125.23	115.77	+ 0.54	+ 8.76
94 Personal Effects n.e.c.	0.9447	167.73	162.03	141.30	+ 3.52	+ 18.70

Annexure B:CPI (Rural) Index Numbers by Commodity Groups & Commodities (2015-16=100)

Item and Specification	Weight	Index Numbers			% Change in Jan 2020 over			
		Jan 20	Dec 19	Jan 19	Dec 2019	Jan 2019		
General	100.0000	133.42	130.28	114.68	+	2.41	+	16.34
Food and non-alcoholic Bevera	40.8668	136.89	131.96	109.10	+	3.74	+	25.47
01 Wheat	3.4736	139.20	127.62	105.31	+	9.07	+	32.18
02 Wheat Flour	3.4297	127.91	120.49	102.16	+	6.16	+	25.21
03 Wheat Products	0.1068	124.43	122.39	111.10	+	1.67	+	12.00
04 Besan	0.0728	129.68	117.92	110.09	+	9.97	+	17.79
05 Rice	1.5501	160.27	157.49	144.07	+	1.77	+	11.24
06 Bakery and Confectionary	0.3702	121.76	120.57	111.94	+	0.99	+	8.77
07 Nimco	0.0774	116.83	116.83	107.47	+	0.00	+	8.71
08 Meat	1.7146	142.46	139.92	127.54	+	1.82	+	11.70
09 Chicken	1.4641	122.72	104.62	103.57	+	17.30	+	18.49
10 Fish	0.2640	126.95	128.15	114.19	-	0.94	+	11.17
11 Milk fresh	10.3803	122.46	121.45	113.05	+	0.83	+	8.32
12 Milk products	0.9624	123.55	123.38	115.11	+	0.14	+	7.33
13 Milk powder	0.1062	119.50	117.85	104.95	+	1.40	+	13.86
14 Eggs	0.5665	148.30	131.37	131.55	+	12.89	+	12.73
15 Butter	0.3333	126.27	123.20	117.10	+	2.49	+	7.83
16 Mustard oil	0.0136	127.03	120.83	111.97	+	5.13	+	13.45
17 Cooking oil	0.6011	148.71	139.66	115.02	+	6.48	+	29.29
18 Vegetable ghee	2.3764	149.64	140.44	119.43	+	6.55	+	25.30
19 Dry fruits	0.2496	138.31	133.58	124.94	+	3.54	+	10.70
20 Fresh fruits	1.4505	115.21	115.49	102.39	-	0.24	+	12.52
21 Pulse Masoor	0.2076	99.20	92.91	80.89	+	6.77	+	22.64
22 Pulse Moong	0.2510	149.20	125.70	81.34	+	18.70	+	83.43
23 Pulse Mash	0.1465	93.88	88.31	66.55	+	6.31	+	41.07
24 Pulse Gram	0.2751	130.84	114.56	104.48	+	14.21	+	25.23
25 Gram Whole	0.1116	126.72	121.59	118.58	+	4.22	+	6.86
26 Beans	0.0896	141.02	134.90	116.31	+	4.54	+	21.24
27 Potatoes	0.7437	198.08	194.27	93.77	+	1.96	+	111.2
28 Onions	0.8965	133.93	168.50	56.60	-	20.52	+	136.6
29 Tomatoes	0.5069	264.13	287.78	84.88	-	8.22	+	211.1
30 Fresh Vegetables	2.0947	187.44	162.44	91.67	+	15.39	+	104.4
31 Sugar	2.0296	120.44	115.41	95.29	+	4.36	+	26.39
32 Gur	0.1522	140.36	124.39	96.03	+	12.84	+	46.16
33 Honey	0.0296	120.63	120.22	117.66	+	0.34	+	2.52
34 Sweetmeat	0.3967	123.65	123.33	111.82	+	0.26	+	10.58
35 Ice Cream	0.0568	122.09	121.14	113.98	+	0.78	+	7.12
36 Condiments and Spices	1.4919	144.75	138.06	114.02	+	4.85	+	26.95
37 Dessert Preparation	0.0133	114.25	114.00	107.10	+	0.22	+	6.68
38 Tea	1.2566	137.69	136.80	125.41	+	0.65	+	9.79
39 Beverages	0.5537	122.70	122.39	107.79	+	0.25	+	13.83
Alcoholic Beverages, Tobacco	1.2786	128.52	128.20	107.81	+	0.25	+	19.21
40 Cigarettes	1.2364	127.77	127.44	106.67	+	0.26	+	19.78
41 Pan Prepared	0.0422	150.48	150.48	141.17	+	0.00	+	6.59
Clothing and footwear	9.4826	133.17	131.72	120.79	+	1.10	+	10.25
42 Cotton Cloth	2.8381	143.00	143.00	126.51	+	0.00	+	13.03
43 Woolen Cloth	1.0959	124.55	124.43	113.42	+	0.10	+	9.81
44 Readymade Garments	1.1345	130.66	128.26	116.42	+	1.87	+	12.23
45 Woolen Readymade Garments	0.5401	128.76	124.10	119.13	+	3.76	+	8.08
46 Tailoring	1.2999	133.07	131.66	125.70	+	1.07	+	5.86
47 Hosiry	0.4322	145.99	143.28	127.19	+	1.89	+	14.78
48 Dopatta	0.2078	128.18	124.09	114.66	+	3.30	+	11.79
49 Cleaning and Laundering	0.0176	123.77	120.91	113.29	+	2.37	+	9.25
50 Footware	1.9165	124.07	121.75	115.58	+	1.91	+	7.35
Housing, water, Elec., Gas an	18.4853	129.64	126.06	118.45	+	2.84	+	9.45
51 House Rent	8.6110	129.42	126.65	121.76	+	2.19	+	6.29
52 Construction Input Items	0.6306	120.19	120.57	113.03	-	0.32	+	6.33
53 Construction Wage Rates	0.2526	144.47	143.53	130.18	+	0.65	+	10.98
54 Water Supply	0.0645	158.09	158.09	121.10	+	0.00	+	30.55
55 Garbage Collection	0.0080	132.21	132.21	130.71	+	0.00	+	1.15
56 Electricity Charges	3.4431	124.87	127.65	109.54	-	2.18	+	13.99
57 Liquified Hydrocarbons	0.9994	159.46	135.65	142.29	+	17.55	+	12.07

Annexure B:CPI (Rural) Index Numbers by Commodity Groups & Commodities (2015-16=100)

Item and Specification	Weight	Index Numbers			% Change in Jan 2020 over	
		Jan 20	Dec 19	Jan 19	Dec 2019	Jan 2019
58 Solid Fuel	4.4761	127.15	120.88	113.64	+ 5.19	+ 11.89
<i>Furnishing and household equi</i>	4.1031	125.42	124.41	114.29	+ 0.81	+ 9.74
59 Furniture and Furnishing	0.5786	127.26	125.04	114.68	+ 1.78	+ 10.97
60 Household Textiles	0.4382	123.93	122.80	116.05	+ 0.92	+ 6.79
61 Household Equipments	1.2774	130.86	130.56	120.15	+ 0.23	+ 8.91
62 Plastic Products	0.0776	134.21	133.49	122.71	+ 0.54	+ 9.37
63 Major Tools and Equipments	0.0324	114.44	113.71	111.10	+ 0.64	+ 3.01
64 Washing Soaps, Detergents and	1.6989	120.90	119.78	108.97	+ 0.94	+ 10.95
<i>Health</i>	3.5141	136.90	136.10	122.11	+ 0.59	+ 12.11
65 Drugs and Medicines	1.5792	139.18	138.13	120.70	+ 0.76	+ 15.31
66 Doctor Clinic Fee	0.5128	154.44	152.58	130.49	+ 1.22	+ 18.35
67 Dental Services	0.0181	113.82	113.82	108.66	+ 0.00	+ 4.75
68 Medical Tests	0.3967	138.31	137.76	120.81	+ 0.40	+ 14.49
69 Hospitals Services	1.0073	124.27	124.27	120.80	+ 0.00	+ 2.87
<i>Transport</i>	5.5580	143.36	142.07	122.32	+ 0.91	+ 17.20
70 Motor Vehicles	0.7305	127.13	127.12	113.00	+ 0.01	+ 12.50
71 Motor Vehicles Accessories	0.1572	132.43	132.66	118.76	- 0.17	+ 11.51
72 Motor Fuels	2.4932	160.60	157.36	127.06	+ 2.06	+ 26.40
73 Mechanical Services	0.3645	148.24	147.17	143.88	+ 0.73	+ 3.03
74 Motor Vehicle Tax	0.0174	127.98	127.98	127.98	+ 0.00	+ 0.00
75 Transport Services	1.7952	126.13	126.84	115.41	- 0.56	+ 9.29
<i>Communication</i>	1.9940	104.70	104.67	102.98	+ 0.03	+ 1.67
76 Postal Services	0.0070	149.43	149.43	113.66	+ 0.00	+ 31.47
77 Communication Apparatus	0.3362	118.85	118.68	115.06	+ 0.14	+ 3.29
78 Communication Services	1.6508	101.63	101.63	100.47	+ 0.00	+ 1.15
<i>Recreation and culture</i>	1.3764	122.07	121.71	113.74	+ 0.30	+ 7.32
79 Recreation and Culture	0.4763	126.57	126.27	117.49	+ 0.24	+ 7.73
80 Text Books	0.5047	110.23	110.12	102.23	+ 0.10	+ 7.83
81 Newspapers	0.0230	161.68	161.68	161.68	+ 0.00	+ 0.00
82 Stationery	0.3724	129.91	129.11	121.61	+ 0.62	+ 6.83
<i>Education</i>	2.1342	132.56	132.56	124.26	+ 0.00	+ 6.68
83 Education	2.1342	132.56	132.56	124.26	+ 0.00	+ 6.68
<i>Restaurants and hotels</i>	6.1895	129.84	128.68	119.22	+ 0.90	+ 8.91
84 Readymade Food	3.8001	132.73	131.29	122.08	+ 1.10	+ 8.72
85 Marriage Hall Charges	2.2525	126.67	125.92	115.47	+ 0.60	+ 9.70
86 Accommodation Services	0.1369	101.59	101.59	101.59	+ 0.00	+ 0.00
<i>Misc. goods and services</i>	5.0174	133.16	131.15	118.39	+ 1.53	+ 12.48
87 Personal Grooming Services	1.5363	134.41	134.23	122.00	+ 0.13	+ 10.17
88 Appliances/Articles/Products	2.2746	118.05	117.27	110.33	+ 0.67	+ 7.00
89 Personal Effects n.e.c.	1.2065	160.05	153.37	129.00	+ 4.36	+ 24.07

Annexure C: Wholesale Price Indices by Major Groups & Commodities

(2015-16=100)

Item and Specification	Weight	Index Numbers			% Change in Jan 2020 over			
		Jan 20	Dec 19	Jan 19	Dec 2019	Jan 2019		
General	100.0000	144.34	141.75	125.12	+	1.83	+	15.36
Agriculture Forestry & Fisher	25.7674	142.32	139.17	121.94	+	2.26	+	16.71
001 Wheat	0.6297	137.96	124.32	103.18	+	10.97	+	33.71
002 Maize	0.6764	146.93	139.78	124.70	+	5.12	+	17.83
003 Rice	2.4413	146.33	142.81	130.18	+	2.46	+	12.41
004 Sorghum / Jowar	0.0214	163.97	140.05	126.10	+	17.08	+	30.03
005 Millet / Bajra	0.0374	124.73	118.66	110.58	+	5.12	+	12.80
006 Vegetables	1.2441	218.12	223.13	100.43	-	2.25	+	117.1
007 Fresh Fruits	1.5144	120.68	115.80	110.87	+	4.21	+	8.85
008 Dry Fruits	0.2478	128.77	127.00	118.88	+	1.39	+	8.32
009 Cotton Seeds	1.1511	132.51	123.02	95.59	+	7.71	+	38.62
010 Other Oil Seeds	0.0722	138.87	128.83	115.10	+	7.79	+	20.65
011 Edible Roots / Potatoes	0.2540	233.77	218.88	96.23	+	6.80	+	142.9
012 Stimulant & Spice Crops	0.1634	245.29	236.49	144.51	+	3.72	+	69.74
013 Pulses	0.4901	128.53	118.10	101.23	+	8.83	+	26.97
014 Sugar Crops	1.0725	114.58	114.58	95.52	+	0.00	+	19.95
015 Fibre Crops	5.3169	170.33	167.79	165.75	+	1.51	+	2.76
016 Unmanufactured Tobacco	0.0742	169.35	168.23	150.46	+	0.67	+	12.55
017 Poultry	0.5633	116.82	97.34	92.43	+	20.01	+	26.39
018 Raw Milk from Bovine Animals	7.0279	116.57	116.54	107.64	+	0.03	+	8.30
019 Eggs	0.5034	152.68	139.52	129.85	+	9.43	+	17.58
020 Raw Animal Materials / Wool	0.0351	105.33	105.33	106.74	+	0.00	-	1.32
021 Hides, Skins & Fur Skins, Raw	0.4834	38.68	34.97	42.35	+	10.61	-	8.67
022 Fuel Wood in Logs	0.0179	114.50	109.51	109.58	+	4.56	+	4.49
023 Fish Live Fresh or Chilled	1.7295	160.22	159.31	135.84	+	0.57	+	17.95
Ores/Minerals, Elec., Gas & W	12.0069	169.13	169.06	133.91	+	0.04	+	26.30
024 Coal not Agglomerated	0.7508	82.17	82.17	82.17	+	0.00	+	0.00
025 Natural Gas Liquified	5.7065	199.50	197.32	154.22	+	1.10	+	29.36
026 Salt & Pure Sodium Chloride	0.0584	154.91	154.91	129.29	+	0.00	+	19.82
027 Electrical Energy	5.4912	149.60	151.72	119.93	-	1.40	+	24.74
Food, Beverages, Tobacco, Textil	31.1122	132.23	130.41	118.27	+	1.40	+	11.80
Food Products, Beverages &	20.0718	127.70	124.83	111.99	+	2.30	+	14.03
028 Meat of Animals	3.4559	138.21	138.14	125.26	+	0.05	+	10.34
029 Vegetables & Fruit Juice	0.0058	112.66	112.94	118.14	-	0.25	-	4.64
030 Dried Fruits & Nuts	0.1733	158.36	152.76	140.22	+	3.67	+	12.94
031 Fruit Juices	0.3880	117.32	117.15	107.91	+	0.15	+	8.72
032 Vegetable Oils Refined	1.9242	121.02	120.24	107.42	+	0.65	+	12.66
033 Vegetable Ghee	1.5632	142.62	133.96	115.05	+	6.46	+	23.96
034 Oil Cakes	0.9611	134.14	132.20	113.77	+	1.47	+	17.90
035 Processed Liquid Milk	4.4437	124.33	123.44	113.23	+	0.72	+	9.80
036 Milk & Cream in Solid Form	0.0316	123.83	122.38	108.00	+	1.18	+	14.66
037 Ice Cream	0.0047	117.05	116.68	106.46	+	0.32	+	9.95
038 Dairy Products N.E.C	0.0117	127.97	127.97	112.84	+	0.00	+	13.41
039 Wheat Flour	2.3034	128.94	120.14	103.13	+	7.32	+	25.03
040 Other Cereal Flour	0.0604	131.89	117.37	106.06	+	12.37	+	24.35
041 Sugar Refined	1.7975	122.41	114.56	95.40	+	6.85	+	28.31
042 Chocolate	0.0139	81.57	81.57	66.51	+	0.00	+	22.64
043 Sugar Confectionary	0.0738	115.50	115.50	110.66	+	0.00	+	4.37
044 Coffee & Tea	0.7303	127.59	127.47	116.99	+	0.09	+	9.06
045 Spices	0.1449	140.42	140.42	126.79	+	0.00	+	10.75
046 Other Food Products	0.0336	110.93	110.93	107.54	+	0.00	+	3.15
047 Mineral Water	0.0207	122.36	122.36	111.82	+	0.00	+	9.43
048 Beverages	0.6303	125.02	125.00	117.32	+	0.02	+	6.56
049 Tobacco Products	1.2998	104.23	104.23	104.23	+	0.00	+	0.00
Textiles & Apparels	10.3289	142.44	142.51	131.15	-	0.05	+	8.61
050 Cotton Yarn	5.2491	164.84	165.15	150.35	-	0.19	+	9.64
051 Nylon Yarn	0.1719	95.24	95.24	95.24	+	0.00	+	0.00
052 Blended Yarn	0.1689	120.44	120.59	109.93	-	0.12	+	9.56
053 Woven Fabrics	0.0128	133.81	133.10	121.08	+	0.53	+	10.51
054 Cotton Fabrics	0.6343	117.92	116.88	106.52	+	0.89	+	10.70
055 Other Fabrics	1.1016	112.30	112.30	107.55	+	0.00	+	4.42
056 Silk & Reyon Fabrics	0.7350	117.63	117.63	111.99	+	0.00	+	5.04

Annexure C: Wholesale Price Indices by Major Groups & Commodities

(2015-16=100)

Item and Specification	Weight	Index Numbers			% Change in Jan 2020 over	
		Jan 20	Dec 19	Jan 19	Dec 2019	Jan 2019
057 Towels	0.1235	117.41	117.41	110.24	+ 0.00	+ 6.50
058 Blankets	0.0029	96.44	96.44	95.81	+ 0.00	+ 0.66
059 Bed Sheets	0.0913	112.64	112.64	107.14	+ 0.00	+ 5.13
060 Quilts	0.0019	109.35	109.35	107.03	+ 0.00	+ 2.17
061 Woolen Carpets	0.0383	137.01	137.01	122.99	+ 0.00	+ 11.40
062 Synthetic Carpets	0.0566	115.72	115.72	101.85	+ 0.00	+ 13.62
063 Hosiery Products	0.8832	121.87	121.58	113.98	+ 0.24	+ 6.92
064 Readymade Garments	1.0576	130.41	130.41	118.68	+ 0.00	+ 9.88
Leather Products	0.7115	111.94	111.94	108.48	+ 0.00	+ 3.19
065 Leather Without Hair	0.2973	105.65	105.65	105.39	+ 0.00	+ 0.25
066 Other Leather N.E.C	0.2567	111.77	111.77	102.51	+ 0.00	+ 9.03
067 Footwears	0.1575	124.07	124.07	124.07	+ 0.00	+ 0.00
Other Transportable Goods	22.3979	154.62	149.35	137.26	+ 3.53	+ 12.65
068 Timber	0.0165	111.96	111.96	111.17	+ 0.00	+ 0.71
069 Printing Paper	0.4279	130.70	130.70	107.74	+ 0.00	+ 21.31
070 Hard Board	0.1579	146.50	146.50	146.50	+ 0.00	+ 0.00
071 Motor Spirit	1.6268	165.08	161.27	127.68	+ 2.36	+ 29.29
072 Diesel Oil	5.4849	171.39	167.67	148.39	+ 2.22	+ 15.50
073 Kerosine Oil	0.2151	195.04	188.96	162.74	+ 3.22	+ 19.85
074 Furnace Oil	3.2664	228.12	204.30	199.05	+ 11.66	+ 14.60
075 Mobil Oil	0.7114	120.04	120.04	112.17	+ 0.00	+ 7.02
076 Chemicals	1.7720	129.69	127.75	122.30	+ 1.52	+ 6.04
077 Dyeing Material	0.1539	146.16	146.16	103.21	+ 0.00	+ 41.61
078 Fertilizers	2.8657	107.69	107.26	99.54	+ 0.40	+ 8.19
079 Pesticides	0.2763	111.16	111.16	105.07	+ 0.00	+ 5.80
080 Insecticides	0.1276	111.24	111.24	112.78	+ 0.00	- 1.37
081 Paints & Varnishes	0.1916	124.68	124.68	118.44	+ 0.00	+ 5.27
082 Medicines	1.1428	140.55	137.26	116.74	+ 2.40	+ 20.40
083 Soaps & Detergents	0.8168	109.81	109.73	110.84	+ 0.07	- 0.93
084 Auto Tyres	0.2703	121.33	121.30	110.31	+ 0.02	+ 9.99
085 Plastic Products	0.4550	108.15	108.14	105.42	+ 0.01	+ 2.59
086 Glass sheets	0.2089	145.21	144.91	138.31	+ 0.21	+ 4.99
087 Other Glass Articles	0.1635	132.20	132.20	119.93	+ 0.00	+ 10.23
088 Ceramics & Sanitary Fixture	0.0244	123.86	123.86	113.65	+ 0.00	+ 8.98
089 Bricks, Blocks & Tiles	0.1566	119.30	119.34	109.88	- 0.03	+ 8.57
090 Cement	1.8145	113.78	111.63	113.27	+ 1.93	+ 0.45
091 Bed Foam	0.0006	139.56	127.14	111.49	+ 9.77	+ 25.18
092 Matches	0.0505	1170.1	1170.1	1127.3	+ 0.00	+ 3.79
Metal Product, Machinery & Eq	8.7156	132.99	132.68	115.68	+ 0.23	+ 14.96
093 Steel Bar & Sheets	1.4615	155.88	156.71	133.77	- 0.53	+ 16.53
094 Pipe Fittings	0.0780	141.32	141.32	117.12	+ 0.00	+ 20.66
095 Steel Products	0.3879	133.35	133.35	118.55	+ 0.00	+ 12.48
096 Engines & Motors	0.0046	107.29	107.29	107.29	+ 0.00	+ 0.00
097 Vacuum Pumps	0.0155	107.56	107.56	107.56	+ 0.00	+ 0.00
098 Air Conditioners	0.0049	112.46	112.46	102.84	+ 0.00	+ 9.35
099 Cultivators	0.0551	103.75	103.75	87.11	+ 0.00	+ 19.10
100 Chuff Cutter	0.1293	104.29	104.29	102.86	+ 0.00	+ 1.39
101 Tractors	0.0028	109.22	109.22	109.22	+ 0.00	+ 0.00
102 Lathe Machines	0.0525	168.06	168.06	144.32	+ 0.00	+ 16.45
103 Concrete Mixture	0.0107	100.00	100.00	100.00	+ 0.00	+ 0.00
104 Fridge, WashM, SewM, Fans, Iron	1.1645	144.57	144.57	122.84	+ 0.00	+ 17.69
105 Electric Wires	0.0912	125.73	125.73	115.52	+ 0.00	+ 8.84
106 Lighting Equipments	1.4431	113.35	110.71	106.55	+ 2.38	+ 6.38
107 Radio & Television	0.1843	100.59	100.59	96.80	+ 0.00	+ 3.92
108 Motor Vehicles	0.0244	156.02	150.63	124.29	+ 3.58	+ 25.53
109 Motorcycles	0.2570	120.09	120.09	115.97	+ 0.00	+ 3.55
110 Bicycles	3.3483	131.36	131.36	110.47	+ 0.00	+ 18.91