

IMPORTANT

*Report in part or whole
cannot be quoted or
reproduced*

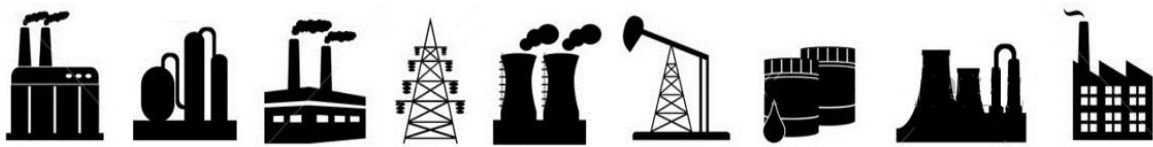
RESTRICTED

For official use only

FEBRUARY 2022



**MONTHLY SURVEY OF INDUSTRIAL
PRODUCTION & EMPLOYMENT IN THE PUNJAB**



BUREAU OF STATISTICS

Planning & Development Department
Government of the Punjab, Lahore

www.bos.gop.pk

PREFACE

Bureau of statistics has been issuing this Monthly Survey of Industrial Production and Employment Report since October 1972. This report provides important statistics in respect of industrial production & employment, employment cost and other aspects of manufacturing activities e.g. consumption of raw material, export of industrial products, import of raw material and productivity of labour etc. These statistics are pre-requisite for sound economic planning as well as for measuring the performance/growth of the industrial sector (GDP estimates regarding industrial sector).

This report contains statistics regarding 46 important industries, manufacturing about almost selected items, contributing 72% of the total value added of large scale manufacturing sector in the province. This report covers more than 2000 industrial units from all over the Punjab.

This report gives information regarding General Index as compared to base period 2005-06, and comprehensive analytical note over the current status of the industrial growth at different sectors. Tables of production & employment give comparisons with the previous month and the same month of the previous year as well as comparisons among financial periods. Performance analysis of 13 major items pertaining to detailed tables & graphical explanation is given in this report.

All possible efforts have been made to incorporate the latest available data in this report. It is hoped that this report will be useful to the policy makers, planners, researchers and other users of industrial/economic data in public as well as private sector.

Suggestions for further improvements will be welcomed.

(SAJID RASUL)
Director General
Bureau of Statistics,
Government of the Punjab

C O N T E N T S

Sr.#	Description	Page #
i	Explanatory Note	I – IV
ii	Table of General Index of Industrial Production	1
iii	Analytical Note: Industrial Production and Employment January 2022	2 - 3

T A B L E S

1	Production Volume of Selected Items Pertaining to Large-Scale Manufacturing Sector, February 2022 VS January 2021	4 - 5
2	Production Volume of Selected Items Pertaining to Large-Scale Manufacturing Sector, February 2022 VS February 2021	6 - 7
3	Production Volume of Selected Items Pertaining to Large-Scale Manufacturing Sector, 2021-22 (Jul - Feb:) VS 2020-21 (Jul – Feb:)	8 - 9
4	Total Employment Regarding Large-Scale Industries, February 2022, January 2021 and February 2021	10
5	Total Number of Production Workers Regarding Large-Scale Industries, January 2021, February 2022 and February 2021	11
6	Average Monthly Total Employment Regarding Large-Scale Industries, 2021-22 (Jul - Feb:) VS 2020-21 (Jul - Feb:)	12
7	Average Monthly Number of Production Workers Regarding Selected Large Scale Industries, 2021-22 (Jul - Feb:) VS 2020-21 (Jul – Feb:)	13

A N N E X U R E S

I	Performance of Cotton Textile Industry	14 - 20
II	Performance of Woollen Textile Industry	21 - 23
III	Performance of Vegetable Ghee/Cooking Oil Industry	24 - 28
IV	Performance of Beverages Industry	29 - 30
V	Performance of Sugar Industry	31 - 33
VI	Performance of Cigarettes Industry	34 - 35
VII	Performance of Cement Industry	36 - 40
VIII	Performance of Fertilizer Industry	41 - 46
IX	Performance of Footwear Industry	47 - 48
X	Performance of Leather Tanning Industry	49 - 50
XI	Performance of Paper & Paper Board Industry	51 - 52
XII	Performance of Light Engineering Industry	53 - 59
XIII	Performance of Pharmaceutical Industry	60 - 63

A P P E N D I X

A	Telephone Numbers	64
---	-------------------	----

List of Tables

Table No.	Title of Table	Page No.
1	General Index of Industrial Production	1
2	Production Volume of Selected Items Pertaining to Large-Scale Manufacturing Sector, February - 2022 VS January - 2021	4
3	Production Volume of Selected Items Pertaining to Large-Scale Manufacturing Sector, February - 2022 VS January - 2021	6
4.	Production Volume of Selected Items Pertaining to Large-Scale Manufacturing Sector 2021-22,(July- February) VS 2020-2021 (July- February)	8
5	Total Employment Regarding Selected Large-Scale Industries, January - 2021, February - 2022 and February - 2021.	10
6	Total Number of Production Workers Regarding Selected Large-Scale Industries January - 2021, February - 2022 and February - 2021	11
7.	Average Monthly Total Employment Regarding Selected Large-Scale Industries 2021-22 (July - February) and 2020-21 (July - February)	12
8	Average Monthly Production Workers regarding selected Large-Scale Industries 2021-22 (July - February) and 2020-21 (July - February)	13
9	Production of Man Made/Blended Yarn and Cloth	15
10	Detail of the Purchase, Sale Consumption and Stock of Cotton Bales.	17
11	Production, Purchase, Consumption, Sale and Stock of Cotton Yarn	18
12	Production .Purchase, Sale and Stock of Cotton Cloth	19
13	Employment, Wages/Salaries of Cotton Textile Industry	20
14	Manufacturing Activity of Woollen Industry	23
15	Detail of the Stock Purchase, Consumed and Sale of Edible Oil	26
16	Detail of Production, Sale and Stock of Vegetable Ghee/Cooking Oil	27
17	Employment, Wages/Salaries of Vegetable Ghee/Cooking Oil Industry	28
18	Manufacturing Activity of Beverages Industry	30
19	Manufacturing Activity of Sugar Industry	32
20	Employment, Wages/Salaries of Sugar Industry	33
21	Manufacturing Activity of Cigarettes Industry	35
22	Detail of Production, Consumption and Stock of Clinker	38
23	Detail of Production, Sale and Stock of Cement	39
24	Employment and Wages/Salaries of Cement Industry	40
25	Detail of Production, Sale and Stock of Urea and Amm. Sulphate	43
26	Detail of Production, Sale and Stock of Super Phosphate and Amm.Nitrate	44
27	Detail of Production, Sale and Stock of Nitro Phosphate	45
28	Employment Wages/Salaries of Fertilizer Industry	46
29	Manufacturing Activity of Footwear Industry	48
30	Manufacturing Activity of Leather Tanning Industry	50
31	Manufacturing Activity of Paper and Paper Board Industry	51
32	Manufacturing Activity of Light Engineering Industry	57
33	Total Employment of Light Engineering Industry	58
34	Production Workers of Light Engineering Industry	59
35	Manufacturing Activity of Pharmaceutical Industry	62
36	Employment and Wages/Salaries of Pharmaceutical Industry	63

List of Figures

Fig. No.	Title of Figures	Page No.
1	Quantum Index of Manufacturing Industries	1
2	Production of Cotton Yarn	16
3	Production of Cotton Cloth	16
4	Production of Knitting Wool	21
5	Production of Woollen Yarn	22
6	Production of Woollen and Worsted Cloth	22
7.	Production of Vegetable Ghee	24
8	Production of Cooking Oil	25
9	Production of Vegetable Ghee/Cooking Oil	25
10	Production of Fruit Juices	29
11	Production of Soft Drinks	29
12	Production of Sugar	31
13	Production of Cigarettes	34
14	Production of Clinker	36
15	Production of Cement	37
16	Production of Urea	41
17	Production of Super Phosphate	42
18	Production of Amm. Nitrate	42
19	Production of Nitro Phosphate	42
20	Production of Footwear	47
21	Production of Upper Leather	49
22	Production of Sole Leather	49
23	Production of Paper	51
24	Production of Paper Board	51
25	Production of Re-Rolled Steel	53
26	Production of Bicycles	54
27	Production of Electric Fans	55
28	Production of Electric Motors	56
29	Production of Diesel Engines	56
30	Production of Tablets	60
31	Production of Liquids	61
32	Production of Capsules	61
33	Production of Injections	61

I
EXPLANATORY NOTE

To have current information on production, employment and other aspects of manufacturing activities e.g. consumption of raw material, wages/salaries, export of industrial products, imports of raw material and productivity of labour etc. for economic planning, evaluation of industrial development and taking other policy related decisions, Government of the Punjab had decided in October 1972 to undertake a Monthly Survey on Industrial Production and Employment.

Prior to this Survey, the only data available on Industrial Statistics was the results of Census of Manufacturing Industries (C.M.I) that were available with the time lag of 2-3 years with a question mark on very high rate of non- response. This high rate of non-response affected the consistency of the results. Therefore, these results were of little use for current and future planning except for historical, research and academic interests/purposes. So Monthly Survey of Industrial Production and Employment was considered to be suitable for Economic Planning as well as for measuring the performance/growth of the industrial sector.

Only 15 industries and their 113 factories were selected to cover initially in October 1972. This report now contains statistics regarding 46 important industries, manufacturing about 100 selected items, contributing 72% of the total value added of large scale manufacturing sector in the province based on base year 2005-06 and covers more than 2000 industrial units from all over the Punjab.

Questionnaire

Keeping in view the pre-determined purpose the data on Industrial Inputs (raw material), Outputs (finished products), Sales, exports, Stocks, Employment & Employment Cost etc. are designed on the available information from CMI returns. These Questionnaires have been pre-tested in some of the large units manufacturing the respective items.

Methodology

Basically it is a mail enquiry. The respondents are the factory owners or the factory management (i.e. Accountants, Finance Manager, and Mill Manager etc.) The blank questionnaires of various industries are used to be mailed out to the factories for their use for the supply of the required information every month. About 60% to 70% questionnaires are received through mail. While the remaining non-responding industrial units are visited by the officers/officials of this Bureau during the third week of the following month for collection of requisite information.

Editing

The received questionnaires are statistically examined for the accuracy and consistency by comparing the production and employment levels of the current month with previous month and same month of the last year. The information of the factories which could not be collected during the month due to the absence of the concerned person or due to other reason is estimated on the basis of the last months average production or the last month information is repeated.

Tabulation

The information collected is tabulated on working sheets prepared for this purpose and also on computer for each industry/factory. Seven tables are prepared every month on production, total employment and production workers as well as comparisons are made with respect to last month, with same month of the last year and among current & previous financial years.

General index / Quantum Index of Manufacturing (QIM)

At present Punjab Bureau of Statistics is computing Index on Industrial Production using 2005-06 as base year. Index series is given in this report by using Laspayer's Index since 2006-07.

This Bureau initially prepared Index Series using 1970-71 as base year. Later on the base year was shifted to 1980-81 & then in October 2011 the base year was sifted to 2005-06. Majority of some new items are included in the new index series due to their relative weight and some items were discarded due to their negligible weights.

Formula of Quantum Index

$$QIM = \frac{\sum_{i=1}^n \frac{q_{im}}{q_{io}} w_i}{\sum_{i=1}^n w_i} \times 100$$

q_{im} = Production of i^{th} item during the current month

q_{io} = Average Production of the same i^{th} item in the base period (2005-06).

w_i = Weight of the i^{th} item in the base year (2005-06).

$\sum w_i$ = total weight of 46 large scale industries in the base period with respect to the total value added of all the industries covered in CMI in the base year (2005-06).

Final Product

Final product is a CIS report that contains QIM series, analytical note on the performance of Industrial Sector in the province, seven tables, and detailed performance report of some important industries as well.

User Agencies

- i. Ministry of Industries & Production, Government of the Pakistan, Islamabad.
- ii. Pakistan Bureau of Statistics, Government of Pakistan, Islamabad.
- iii. Provincial Bureaus of Statistics, Government of Sindh, KPK and Baluchistan.
- iv. Planning & Development Department, Government of the Punjab.
- v. Punjab Economic Research Institute (PERI).
- vi. Department of Commerce & Industry, Government of the Punjab.
- vii. State Bank of Pakistan

IV
IMPORTANT DEFINITIONS

Factory

An entity where manufacturing process is carried out on any day of the preceding thirty days and in any part of which manufacturing process is being carried on with or without the aid of power or through chemical process. It does not include the Mine subject which comes under the operation of Mines Act 1923.

Large Scale Manufacturing Industries

Establishments where ten or more employees are working are classified as large scale industry.

Employment

This item include all full time and part time employees on the payrolls of operating manufacturing establishment during any part of the pay period of the month specified on the questionnaire. It should include all the employees on paid sick leave paid holidays, and paid vacations. Proprietors and partners of unincorporated business may not be included.

Production Workers

The “Production Workers” includes workers (up through the line-supervisor level) engaged in fabricating, processing, assembling, inspecting, receiving, storing, handling, packing, warehousing, shipping (but no delivering), maintenance, repair, product development, auxiliary production for plant’s own use (e.g., power plant). Record keeping and other services closely associated with these production operations at the establishment covered by the report.

Non-Production Workers

The employees those are not involved directly in the manufacturing process are called non-production workers. E.g. Managers, Assistants, Clerks, Drivers, Peons, Malies and Chowkidars etc.

Employment Cost

Wages and salaries of all employees including production and non-production workers is called employment cost.

TABLE 1: GENERAL INDEX OF INDUSTRIAL PRODUCTION
FOR THE PERIOD JULY 2015 – FEBRUARY 2022
(2005-06=100)

MONTH/ YEAR	2015 - 16	2016 - 17	2017 - 18	2018 - 19	2019 - 20	2020 - 21	2021 - 22
JUL:	133.0	144.9	152.5	156.5	155.5	160.2	171.1
AUG:	137.1	150.8	154.7	154.3	152.8	155.2	171.8
SEP:	141.0	144.4	152.9	158.1	159.3	169.3	171.0
OCT:	141.1	148.9	160.1	168.7	171.7	176.5	177.6
NOV:	139.4	157.6	153.1	160.6	167.8	179.5	185.1
DEC:	163.7	186.9	178.1	168.7	182.2	216.6	213.2
JAN:	170.6	188.4	213.9	210.3	202.2	208.5	220.5
FEB:	166.1	183.2	222.1	198.9	203.5	207.4	225.1
MAR:	168.0	193.3	245.0	251.9	186.9	213.6	
APR:	155.4	171.5	186.5	197.9	140.0	188.4	
MAY:	145.2	158.6	168.2	175.3	140.0	179.3	
JUN:	149.4	150.6	161.9	160.0	146.3	172.3	
Average*	150.3	164.0	176.8	178.1	166.0	184.5	190.7

* = Geometric Mean

Fig. 1 **Graph of Quantum Index of Manufacturing Industries.**
(2005-06=100)

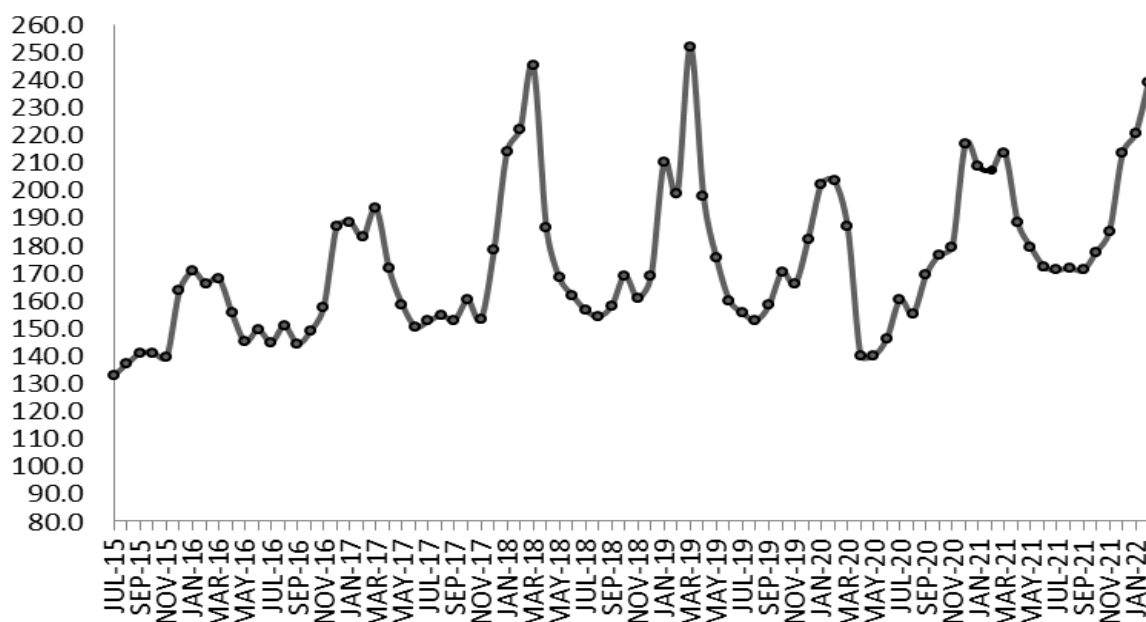


Figure: Graph of QIM for the period of July 2015 to February 2022

ANALYTICAL ANALYSIS

INDUSTRIAL PRODUCTION AND EMPLOYMENT (February 2022)

Coverage

This report covers 2041 industrial units pertaining to large scale industries which contribute about 72 percent of the total value added of Large-Scale Manufacturing sector in the Punjab.

Industrial Production Index

Industrial Production Index for the month of February-2022 stood at 225.1 against 220.5 and 207.4 as compared to January-2022 and February-2021 respectively. Index Series since July-2015 is given in Table-1 on previous page.

Production February 2022 VS January 2022 (Table-2)

Overall production during the month of February-2022 was 2.1 percent higher than January-2022.

The production was lower in case of Sugar (8.5%), Jute Textiles (16.2%), Paper & Paper Board (11.7%), Fertilizers (6.1%), Fabricated Metal Products (28.6%) and Motor Cycles (7.4%).

The production was higher in case of Dairy Products (28.8%), Wheat Milling (8.6%), Starch & its Products (5.6%), Soft Drinks & Juices (34.8%), Glass Sheet (5.4%), Cement (8.6%), Electric Meters (9.2%), Air-Conditioners (53.9%), Refrigerators/Deep Freezers (13.0%) and Agricultural Implements (25.9%).

Production February 2022 VS February 2021 (Table-3)

Overall production during February-2022 was 8.5 percent higher than February-2021.

The production was lower in case of Wheat Milling (26.2%), Soft Drinks & Juices (15.1%), Cigarettes (17.5%), Woolen Textiles (25.9%), Upper Leather (5.5%), Steel Bars/ Angles (6.5%), Diesel Engines (9.5%), Electric Motors (23.0%), Air-Conditioners (48.9%), Refrigerators/Deep Freezers (29.1%), Safety Razor Blades (7.3%) and Agricultural Implements (7.8%).

The production was higher in case of Sugar (26.9%), Starch & its Products (22.0%), Cloth/M.M Blended Cloth (14.7%), Footwear (10.0%), Ply Wood (26.4%), Pharmaceuticals (6.0%), Basic Inorganic Chemicals/Acids (8.5%), Fertilizers (9.6%), Paints & Varnishes (6.9%), Synthetic Fibre (19.5%), Petroleum Products (17.7%), Glass Sheet (19.0%), Cement (6.4%), Fabricated Metal Products/HMC (66.7%), Tractors (49.8%), Automobiles Cars/Trucks (43.7%), Motor Cycles (9.1%), Bicycles (75.8%) and Electric Meters (93.7%).

Production July-February 2021-22 VS July-February 2020-21 (Table-4)

Overall production during July-February (2021-22) was 4.3 percent higher than July-February (2020-21).

The Production was lower in case of Dairy Products (12.6%), Woolen Textiles (14.7%), Tyre & Tubes (6.4%), Diesel Engines (7.3%), Electric Motors (23.3%), Air-Conditioners (19.0%), Refrigerators/Deep Freezers (15.0%) and Agricultural Implements (7.4%).

The production was higher in case of Sugar (18.5%), Stach & its Products (7.0%), Soft Drinks & Juices (19.9%), Cloth/M.M Blended Cloth (13.6%), Jute Textiles (12.7%), Upper Leather (18.3%), Footwear (18.1%), Ply Wood (86.1%), Paper & Paper Board (6.3%), Basic Inorganic Chemicals/ Acids (14.4%), Synthetic Fibre (9.7%), Petroleum Products (14.6%), Glass Sheets (10.6%), Fabricated Metal Products/HMC (38.2%), Tractors (125.9%), Automobiles Cars/Trucks (37.0%), Motor Cycles (15.5%), Bicycles (98.3%), Electric Fans (16.6%), Electric Meters (57.5%) and Safety Razor Blades (6.9%).

Employment February 2022 VS Janaury 2022 and February 2021 (Table-5)

Total employment during February-2022 was 0.2 percent and 2.2 percent higher than January-2022 and February-2021 respectively.

Average Employment July-February 2021-22 VS July-February 2020-21 (Table-7)

Average monthly employment during the period of July-February (2021-22) was 1.5 percent higher than the corresponding period of the previous year.

Table 2: Production Volume of Selected Items Pertaining to Large-Scale Manufacturing Sector, February 2022 VS January 2022

Group/Items	No. of Units Covered in Feb: 2022	Weight with 2005-06 base	Unit of Quantity	Production		Index of Production in Feb: 2022 with Jan: 2022
				Feb: 2022	Jan: 2022	
I Food Drinks & Tobacco	910					
1 Vegetable Ghee/Cooking Oil	44	5.00	M.Tons	90488	90414	100.1
i) Vegetable Ghee	44		M.Tons	73864	73825	100.1
ii) Cooking Oil	18		M.Tons	16624	16589	100.2
2 Dairy Products	8	4.13				128.8
i) Process/UHT Milk		1.62	`000` Litres	37205	37156	100.1
ii) Milk Powder		0.87	M.Tons	990	952	104.0
iii) Chees		0.01	M.Tons	1156	1411	81.9
iv) Butter/ Desi Ghee		0.33	M.Tons	888	416	213.5
v) Cream		1.04	M.Tons	1081	541	199.8
vi) Yoghurt		0.26	M.Tons	0	0	
3 Wheat Milling	776	1.25	M.Tons	983744	905523	108.6
4 Sugar	44	3.77	M.Tons	1212391	1325188	91.5
5 Tea (Blended)	3	0.03	M.Tons	9709	9722	99.9
6 Starch & its Products	2	0.56	M.Tons	34973	33120	105.6
i) Starch			M.Tons	20672	19120	108.1
ii) Glucose			M.Tons	14301	14000	102.2
7 Soft Drinks & Juices	30	0.82	`000` Litres	150745	111831	134.8
i) 7-up Coca Cola etc.	19		`000` Litres	135719	97868	138.7
ii) Fruit Juices	19		`000` Litres	13224	10246	129.1
iii) Syrups & Squashes	2		`000` Litres	1802	3717	48.5
8 Cigarettes	3	0.59	M. Nos	1439	1394	103.2
II Textiles	312					
1 Cotton Textiles	285					
i) Cotton/M. M Blended Yarn	247	15.40	M.Tons	137006	136940	100.0
ii) Cloth/M. M Blended Cloth	48	10.20	000 Mtrs.	67915	67836	100.1
2 Woolen Textiles	21	0.52	M.Tons	573	572	100.2
i) Woolen Yarn	14		M.Tons	558	554	100.7
ii) Knitting Wool	3		M.Tons	0	0	
iii) Woolen & Worsted Cloth	14		M.Tons	15	18	83.3
iv) Carpets	5	0.77	000 Mtrs.	0	0	
3 Jute Textiles	6	0.28	M.Tons	4483	5348	83.8
i) Jute Sacking				2807	3421	82.1
ii) Jute Hessian				1172	1301	90.1
iii) Jute Twine				504	626	80.5
III Leather Rubber & Plastic Products	147					
1 Leather Tanning	106					
i) Upper Leather	95	0.49	000 Sq. Mtrs.	692	678	102.1
ii) Sole Leather	11		M.Tons	14	14	100.0
2 Footwear	41	0.90	000 Pairs	2545	2537	100.3
IV Ply Wood	6	0.44	000 Sq. Feet	881	884	99.7
V Paper & Paper Board	47	4.19	M.Tons	55893	63288	88.3
1 Paper				16240	16829	96.5
i) Writing			M.Tons	8235	7977	103.2
ii) Printing			M.Tons	3451	4022	85.8
iii) Packing & Others			M.Tons	4554	4830	94.3
2 Paper Board			M.Tons	39653	46459	85.4
VI Chemical & Petroleum Products	139					
1 Pharmaceuticals	36	1.15				103.7
i) Tablets	28	0.38	000 Nos.	316549	271875	116.4
ii) Liquids (Syrups & Drops)	27	0.48	000 Ltrs.	1237	1225	101.0
iii) Capsules	19	0.08	000 Nos.	42758	37686	113.5
iv) Injections	12	0.14	000 Nos.	16830	18983	88.7
v) Ointments	7	0.03	Kgs.	32575	41480	78.5
vi) Galenicals	6	0.04	000 Ltrs.	2	3	66.7
2 Basic Inorganic Chemicals/Acids	8	1.34		111225	116351	95.6
i) Caustic Soda	2		M.Tons	20550	22149	92.8
ii) Hydrochloric Acid	2		M.Tons	45397	48609	93.4
iii) Chlorine Liquids	2		M.Tons	1555	1807	86.1
iv) Soda Ash	2		M.Tons	40144	37359	107.5
v) Sulphuric Acid	5		M.Tons	3579	6427	55.7

Group/Items	No. of Units Covered in Feb: 2022	Weight with 2005-06 base	Unit of Quantity	Production		Index of Production in Feb: 2022 with Jan: 2022
				Feb: 2022	Jan: 2022	
3 Fertilizers	7	7.18	M.Tons	415792	442614	93.9
i) Urea	4		M.Tons	277309	290980	95.3
ii) Amm. Nitrate	1		M.Tons	69549	73840	94.2
iii) Amm. Sulphate	0		M.Tons	0	0	
iv) Super Phosphate	1		M.Tons	1808	380	475.8
v) Nitro Phosphate	1		M.Tons	67126	77414	86.7
4 Paints & Varnishes	12	0.65		9866	10097	97.7
i) Paints		0.01	M.Tons	7138	7408	96.4
			`000` Litres	2697	2662	101.3
ii) Varnishes		1.04	M.Tons	17	14	121.4
		0.26	`000` Litres	14	13	107.7
5 Tyres & Tubes	6	0.12	`000` Nos.	3187	3165	100.7
i) Cycle Tyres				323	320	100.9
ii) Automobile Tyres				436	424	102.8
iii) Cycle Tubes				586	580	101.0
iv) Automobile Tubes				1842	1841	100.1
6 Soap	62	0.07	M.Tons	21559	21510	100.2
i) Toilet Soap	7			3555	3530	100.7
ii) Washing Soap	62			18004	17980	100.1
7 Matches	2	0.00	M. Box * 40 Sticks	411	407	101.0
8 Synthetic Fibre	4	0.95	M.Tons	41051	43211	95.0
9 Petroleum Products	2	0.99	`000` Litres	595775	610356	97.6
i) Petrol (LPG)			`000` Litres	16827	16824	100.0
ii) J.P.			`000` Litres	40652	41861	97.1
iii) White Kerosene			`000` Litres	7401	9490	78.0
iv) H.S. Diesel			`000` Litres	241589	246061	98.2
v) Diesel Fuel			`000` Litres	743	276	269.2
vi) Furnace Fuel			`000` Litres	116998	116986	100.0
vii) Solvent Oil			`000` Litres	0	0	
viii) Lubricating Oil			`000` Litres	0	0	
ix) Bitumen 80/100			`000` Litres	2634	2585	101.9
x) Blown Bitumen Products			`000` Litres	0	0	
xi) Premium M.G.			`000` Litres	168931	176273	95.8
xii) Naphtha			`000` Litres	0	0	
VII Non-Metalic & Mineral	21					
1 Glass Sheets	9	0.19	M.Tons	10810	10258	105.4
2 Cement	12	3.91	M.Tons	2057450	1894814	108.6
VIII Engineering Products	459					
1 Steel Bars/ Angles	41	1.06	M.Tons	26512	26680	99.4
2 Fabricated Metal Products/HMC	1	0.53	M.Tons	35	49	71.4
3 Tractors	4	0.86	Nos.	3470	3400	102.1
4 Automobiles Cars/Trucks	1	1.65	Nos.	2299	2267	101.4
5 Diesel Engines	15	0.06	Nos.	133	131	101.5
6 Motor Cycles	17	0.13	Nos.	143903	155444	92.6
7 Bicycles	3	0.15	Nos.	12129	12019	100.9
8 Electric Fans	126	0.11	Nos.	167449	165902	100.9
i) Ceiling				114742	110440	103.9
ii) Pedestal				35196	31100	113.2
iii) Others				17511	24362	71.9
9 Electric Transformers	3	0.00	Nos.	3624	3013	120.3
10 Electric Motors	30	0.52	Nos.	1754	1763	99.5
11 Switch Gears	3	0.01	Nos.	1319	1309	100.8
12 Washing Machines	20	0.00	Nos.	53144	55919	95.0
13 Electric Meters	4	0.19	Nos.	218402	199914	109.2
14 Air-Conditioners	5	0.14	Nos.	4649	3020	153.9
15 Refrigerators/Deep Freezers	5	0.31	Nos.	45366	40158	113.0
16 Safety Razor Blades	1	0.14	Mill. Nos.	89	92	96.7
17 Agricultural Implements	151	0.38	Nos.	1374	1091	125.9
i) Chaff Cutter	54			826	752	109.8
ii) Sugarcane Machines	35			9	10	90.0
iii) Wheat Thrashers	30			45	28	160.7
iv) Others (Misc. Imp.)	43			494	301	164.1
18 Textiles Machinery	29	0.01		43	42	102.4
i) Power Looms	20		Nos.	39	38	102.6
ii) Bobbins	5		000 Nos.	0	0	
iii) Shuttles	6		000 Nos.	4	4	100.0
General Index	2041	72.14		225.1	220.5	102.1

Table 3: Production Volume of Selected Items Pertaining to Large-Scale Manufacturing Sector, February 2022 VS February 2021

Group/Items	No. of Units Covered in Feb: 2022	Weight with 2005-06 base	Unit of Quantity	Production		Index of Production in Feb: 2022 with Feb: 2021
				Feb: 2022	Feb: 2021	
I Food Drinks & Tobacco	910					
1 Vegetable Ghee/Cooking Oil	44	5.00	M.Tons	90488	86215	105.0
i) Vegetable Ghee	44		M.Tons	73864	70050	105.4
ii) Cooking Oil	18		M.Tons	16624	16165	102.8
2 Dairy Products	8	4.13				99.3
i) Process/UHT Milk		1.62	`000` Litres	37205	42462	87.6
ii) Milk Powder		0.87	M.Tons	990	1036	95.6
iii) Chees		0.01	M.Tons	1156	576	200.7
iv) Butter/ Desi Ghee		0.33	M.Tons	888	486	182.7
v) Cream		1.04	M.Tons	1081	917	117.9
vi) Yoghurt		0.26	M.Tons	0	0	
3 Wheat Milling	776	1.25	M.Tons	983744	1332879	73.8
4 Sugar	44	3.77	M.Tons	1212391	955553	126.9
5 Tea (Blended)	3	0.03	M.Tons	9709	7296	133.1
6 Starch & its Products	2	0.56	M.Tons	34973	28657	122.0
i) Starch			M.Tons	20672	15549	132.9
ii) Glucose			M.Tons	14301	13108	109.1
7 Soft Drinks & Juices	30	0.82	`000` Litres	150745	177528	84.9
i) 7-up Coca Cola etc.	19		`000` Litres	135719	163779	82.9
ii) Fruit Juices	19		`000` Litres	13224	11481	115.2
iii) Syrups & Squashes	2		`000` Litres	1802	2268	79.5
8 Cigarettes	3	0.59	M. Nos	1439	1744	82.5
II Textiles	312					
1 Cotton Textiles	285					
i) Cotton/M. M Blended Yarn	247	15.40	M.Tons	137006	139392	98.3
ii) Cloth/M. M Blended Cloth	48	10.20	000 Mtrs.	67915	59200	114.7
2 Woolen Textiles	21	0.52	M.Tons	573	773	74.1
i) Woolen Yarn	14		M.Tons	558	709	78.7
ii) Knitting Wool			M.Tons	0	47	
iii) Woolen & Worsted Cloth	14		M.Tons	15	17	88.2
iv) Carpets	5	0.77	000 Mtrs.	0	0	
3 Jute Textiles	6	0.28	M.Tons	4483	4635	96.7
i) Jute Sacking				2807	3135	89.5
ii) Jute Hessian				1172	901	130.1
iii) Jute Twine				504	599	84.1
III Leather Rubber & Plastic Products	147					
1 Leather Tanning	106					
i) Upper Leather	95	0.49	000 Sq. Mtrs.	692	732	94.5
ii) Sole Leather	11		M.Tons	14	14	100.0
2 Footwear	41	0.90	000 Pairs	2545	2313	110.0
IV Ply Wood	6	0.44	000 Sq. Feet	881	697	126.4
V Paper & Paper Board	47	4.19	M.Tons	55893	54617	102.3
1 Paper				16240	16863	96.3
i) Writing			M.Tons	8235	7922	104.0
ii) Printing			M.Tons	3451	5605	61.6
iii) Packing & Others			M.Tons	4554	3336	136.5
2 Paper Board			M.Tons	39653	37754	105.0
VI Chemical & Petroleum Products	139					
1 Pharmaceuticals	36	1.15				106.0
i) Tablets	28	0.38	000 Nos.	316549	280507	112.8
ii) Liquids (Syrups & Drops)	27	0.48	000 Ltrs.	1237	1686	73.4
iii) Capsules	19	0.08	000 Nos.	42758	37842	113.0
iv) Injections	12	0.14	000 Nos.	16830	8226	204.6
v) Ointments	7	0.03	Kgs.	32575	46026	70.8
vi) Galenicals	6	0.04	000 Ltrs.	2	2	100.0
2 Basic Inorganic Chemicals/Acids	8	1.34		111225	102539	108.5
i) Caustic Soda	2		M.Tons	20550	19042	107.9
ii) Hydrochloric Acid	2		M.Tons	45397	34877	130.2
iii) Chlorine Liquids	2		M.Tons	1555	1365	113.9
iv) Soda Ash	2		M.Tons	40144	42038	95.5
v) Sulphuric Acid	5		M.Tons	3579	5217	68.6

Group/Items	No. of Units Covered in Feb: 2022	Weight with 2005-06 base	Unit of Quantity	Production		Index of Production in Feb: 2022 with Feb: 2021
				Feb: 2022	Feb: 2021	
3 Fertilizers	7	7.18	M.Tons	415792	379374	109.6
i) Urea	4		M.Tons	277309	238750	116.2
ii) Amm. Nitrate	1		M.Tons	69549	62395	111.5
iii) Amm. Sulphate	0		M.Tons	0	0	
iv) Super Phosphate	1		M.Tons	1808	6805	26.6
v) Nitro Phosphate	1		M.Tons	67126	71424	94.0
4 Paints & Varnishes	12	0.65		9866	9230	106.9
i) Paints		0.01	M.Tons	7138	6377	111.9
			`000` Litres	2697	2820	95.6
ii) Varnishes		1.04	M.Tons	17	10	170.0
		0.26	`000` Litres	14	23	60.9
5 Tyres & Tubes	6	0.12	`000` Nos.	3187	3044	104.7
i) Cycle Tyres				323	280	115.4
ii) Automobile Tyres				436	406	107.4
iii) Cycle Tubes				586	535	109.5
iv) Automobile Tubes				1842	1823	101.0
6 Soap	62	0.07	M.Tons	21559	22043	97.8
i) Toilet Soap	7			3555	3577	99.4
ii) Washing Soap	62			18004	18466	97.5
7 Matches	2	0.00	M. Box * 40 Sticks	411	355	115.8
8 Synthetic Fibre	4	0.95	M.Tons	41051	34356	119.5
9 Petroleum Products	2	0.99	`000` Litres	595775	505991	117.7
i) Petrol (LPG)			`000` Litres	16827	11287	149.1
ii) J.P.			`000` Litres	40652	27341	148.7
iii) White Kerosene			`000` Litres	7401	5830	126.9
iv) H.S. Diesel			`000` Litres	241589	211300	114.3
v) Diesel Fuel			`000` Litres	743	875	84.9
vi) Furnace Fuel			`000` Litres	116998	97123	120.5
vii) Solvent Oil			`000` Litres	0	179	
viii) Lubricating Oil			`000` Litres	0	0	
ix) Bitumen 80/100			`000` Litres	2634	7186	36.7
x) Blown Bitumen Products			`000` Litres	0	0	
xi) Premium M.G.			`000` Litres	168931	144870	116.6
xii) Naphtha			`000` Litres	0	0	
VII Non-Metalic & Mineral	21					
1 Glass Sheets	9	0.19	M.Tons	10810	9085	119.0
2 Cement	12	3.91	M.Tons	2057450	1934451	106.4
VIII Engineering Products	459					
1 Steel Bars/ Angles	41	1.06	M.Tons	26512	28350	93.5
2 Fabricated Metal Products/HMC	1	0.53	M.Tons	35	21	166.7
3 Tractors	4	0.86	Nos.	3470	2317	149.8
4 Automobiles Cars/Trucks	1	1.65	Nos.	2299	1600	143.7
5 Diesel Engines	15	0.06	Nos.	133	147	90.5
6 Motor Cycles	17	0.13	Nos.	143903	131941	109.1
7 Bicycles	3	0.15	Nos.	12129	6900	175.8
8 Electric Fans	126	0.11	Nos.	167449	169414	98.8
i) Ceiling				114742	93114	123.2
ii) Pedestal				35196	21014	167.5
iii) Others				17511	55286	31.7
9 Electric Transformers	3	0.00	Nos.	3624	2230	162.5
10 Electric Motors	30	0.52	Nos.	1754	2278	77.0
11 Switch Gears	3	0.01	Nos.	1319	570	231.4
12 Washing Machines	20	0.00	Nos.	53144	46636	114.0
13 Electric Meters	4	0.19	Nos.	218402	112758	193.7
14 Air-Conditioners	5	0.14	Nos.	4649	9100	51.1
15 Refrigerators/Deep Freezers	5	0.31	Nos.	45366	63995	70.9
16 Safety Razor Blades	1	0.14	Mill. Nos.	89	96	92.7
17 Agricultural Implements	151	0.38	Nos.	1374	1491	92.2
i) Chaff Cutter	54			826	900	91.8
ii) Sugarcane Machines	35			9	10	90.0
iii) Wheat Thrashers	30			45	29	155.2
iv) Others (Misc. Imp.)	43			494	552	
18 Textiles Machinery	29	0.01		43	42	102.4
i) Power Looms	20		Nos.	39	38	102.6
ii) Bobbins	5		000 Nos.	0	0	
iii) Shuttles	6		000 Nos.	4	4	100.0
General Index	2041	72.14		225.1	207.4	108.5

Table 4: Production Volume of Selected Items Pertaining to Large-Scale Manufacturing Sector, 2021-22 (Jul-Feb:) VS 2020-21 (Jul-Feb:)

Group/Items	No. of Units Covered in Feb: 2022	Weight with 2005-06 base	Unit of Quantity	Production		Index of Production in 2021-22 (Jul-Feb:) with 2020-21 (Jul-Feb:)=100
				2021-22 (Jul-Feb:)	2020-21 (Jul-Feb:)	
I Food Drinks & Tobacco	910					
1 Vegetable Ghee/Cooking Oil	44	5.00	M.Tons	690008	695933	99.1
i) Vegetable Ghee	44		M.Tons	563787	566849	99.5
ii) Cooking Oil	18		M.Tons	126221	129084	97.8
2 Dairy Products	8	4.13				87.4
i) Process/UHT Milk		1.62	`000` Litres	335800	374192	89.7
ii) Milk Powder		0.87	M.Tons	6421	6263	102.5
iii) Chees		0.01	M.Tons	5056	5361	94.3
iv) Butter/ Desi Ghee		0.33	M.Tons	2656	2320	114.5
v) Cream		1.04	M.Tons	5615	6660	84.3
vi) Yoghurt		0.26	M.Tons	0	0	
3 Wheat Milling	776	1.25	M.Tons	7614298	7732485	98.5
4 Sugar	44	3.77	M.Tons	4096807	3456525	118.5
5 Tea (Blended)	3	0.03	M.Tons	61306	53168	115.3
6 Starch & its Products	2	0.56	M.Tons	271979	254299	107.0
i) Starch			M.Tons	162133	148785	109.0
ii) Glucose			M.Tons	109846	105514	104.1
7 Soft Drinks & Juices	30	0.82	`000` Litres	1376492	1148159	119.9
i) 7-up Coca Cola etc.	19		`000` Litres	1231676	1042574	118.1
ii) Fruit Juices	19		`000` Litres	131108	96773	135.5
iii) Syrups & Squashes	2		`000` Litres	13708	8812	155.6
8 Cigarettes	3	0.59	M. Nos	13209	13709	96.4
II Textiles	312					
1 Cotton Textiles	285					
i) Cotton/M. M Blended Yarn	247	15.40	M.Tons	1096260	1069160	102.5
ii) Cloth/M. M Blended Cloth	48	10.20	000 Mtrs.	531985	468450	113.6
2 Woolen Textiles	21	0.52	M.Tons	4736	5553	85.3
i) Woolen Yarn	14		M.Tons	4562	5134	88.9
ii) Knitting Wool			M.Tons	27	304	8.9
iii) Woolen & Worsted Cloth	14		M.Tons	147	115	127.8
iv) Carpets	5	0.77	000 Mtrs.	0	0	
3 Jute Textiles	6	0.28	M.Tons	36495	32390	112.7
i) Jute Sacking				22250	18373	121.1
ii) Jute Hessian				8850	8476	104.4
iii) Jute Twine				5395	5541	97.4
III Leather Rubber & Plastic Products	147					
1 Leather Tanning	106					
i) Upper Leather	95	0.49	000 Sq. Mtrs.	5682	4804	118.3
ii) Sole Leather	11		M.Tons	112	112	100.0
2 Footwear	41	0.90	000 Pairs	19536	16544	118.1
IV Ply Wood	6	0.44	000 Sq. Feet	9230	4961	186.1
V Paper & Paper Board	47	4.19	M.Tons	482464	454005	106.3
1 Paper				136948	127510	107.4
i) Writing			M.Tons	62801	54914	114.4
ii) Printing			M.Tons	35992	36639	98.2
iii) Packing & Others			M.Tons	38155	35957	106.1
2 Paper Board			M.Tons	345516	326495	105.8
VI Chemical & Petroleum Products	139					
1 Pharmaceuticals	36	1.15				100.4
i) Tablets	28	0.38	000 Nos.	2213078	2091529	105.8
ii) Liquids (Syrups & Drops)	27	0.48	000 Ltrs.	10115	12001	84.3
iii) Capsules	19	0.08	000 Nos.	322007	311982	103.2
iv) Injections	12	0.14	000 Nos.	113725	76374	148.9
v) Ointments	7	0.03	Kgs.	351010	385461	91.1
vi) Galenicals	6	0.04	000 Ltrs.	38	51	74.5
2 Basic Inorganic Chemicals/Acids	8	1.34		912831	798045	114.4
i) Caustic Soda	2		M.Tons	169253	150493	112.5
ii) Hydrochloric Acid	2		M.Tons	339274	271129	125.1
iii) Chlorine Liquids	2		M.Tons	13322	11599	114.9
iv) Soda Ash	2		M.Tons	341573	335095	101.9
v) Sulphuric Acid	5		M.Tons	49409	29729	166.2

Group/Items	No. of Units Covered in Feb: 2022	Weight with 2005-06 base	Unit of Quantity	Production		Index of Production in 2021-22 (Jul-Feb:) with 2020-21 (Jul-Feb:)=100
				2021-22 (Jul-Feb:)	2020-21 (Jul-Feb:)	
3 Fertilizers	7	7.18	M.Tons	3309968	3252387	101.8
i) Urea	4		M.Tons	2204445	2162074	102.0
ii) Amm. Nitrate	1		M.Tons	540450	498410	108.4
iii) Amm. Sulphate	0		M.Tons	0	0	
iv) Super Phosphate	1		M.Tons	20735	22819	90.9
v) Nitro Phosphate	1		M.Tons	544338	569084	95.7
4 Paints & Varnishes	12	0.65		77719	80815	96.2
i) Paints		0.01	M.Tons	56240	57944	97.1
			`000` Litres	21245	22620	93.9
ii) Varnishes		1.04	M.Tons	99	76	130.3
		0.26	`000` Litres	135	175	77.1
5 Tyres & Tubes	6	0.12	`000` Nos.	25168	26896	93.6
i) Cycle Tyres				2498	2357	106.0
ii) Automobile Tyres				3390	5085	66.7
iii) Cycle Tubes				4578	4604	99.4
iv) Automobile Tubes				14702	14850	99.0
6 Soap	62	0.07	M.Tons	175552	173357	101.3
i) Toilet Soap	7			28750	30102	95.5
ii) Washing Soap	62			146802	143255	102.5
7 Matches	2	0.00	M. Box * 40 Sticks	3125	3059	102.2
8 Synthetic Fibre	4	0.95	M.Tons	334310	304640	109.7
9 Petroleum Products	2	0.99	`000` Litres	4764038	4158770	114.6
i) Petrol (LPG)			`000` Litres	122041	103583	117.8
ii) J.P.			`000` Litres	289382	208253	139.0
iii) White Kerosene			`000` Litres	54704	50335	108.7
iv) H.S. Diesel			`000` Litres	1934138	1667245	116.0
v) Diesel Fuel			`000` Litres	5762	5808	99.2
vi) Furnace Fuel			`000` Litres	958058	870234	110.1
vii) Solvent Oil			`000` Litres	0	1804	
viii) Lubricating Oil			`000` Litres	0	0	
ix) Bitumen 80/100			`000` Litres	43343	58192	74.5
x) Blown Bitumen Products			`000` Litres	0	0	
xi) Premium M.G.			`000` Litres	1356610	1193316	113.7
xii) Naphtha			`000` Litres	0	0	
VII Non-Metalic & Mineral	21					
1 Glass Sheets	9	0.19	M.Tons	79525	71903	110.6
2 Cement	12	3.91	M.Tons	16786605	16258532	103.2
VIII Engineering Products	459					
1 Steel Bars/ Angles	41	1.06	M.Tons	206177	204389	100.9
2 Fabricated Metal Products/HMC	1	0.53	M.Tons	340	246	138.2
3 Tractors	4	0.86	Nos.	25958	11493	225.9
4 Automobiles Cars/Trucks	1	1.65	Nos.	16466	12020	137.0
5 Diesel Engines	15	0.06	Nos.	1031	1112	92.7
6 Motor Cycles	17	0.13	Nos.	1187974	1028762	115.5
7 Bicycles	3	0.15	Nos.	90840	45810	198.3
8 Electric Fans	126	0.11	Nos.	1645333	1411075	116.6
i) Ceiling				1004450	829314	121.1
ii) Pedestal				284048	182006	156.1
iii) Others				356835	399755	89.3
9 Electric Transformers	3	0.00	Nos.	19823	19271	102.9
10 Electric Motors	30	0.52	Nos.	15453	20142	76.7
11 Switch Gears	3	0.01	Nos.	8476	3397	249.5
12 Washing Machines	20	0.00	Nos.	419109	385955	108.6
13 Electric Meters	4	0.19	Nos.	1266653	804201	157.5
14 Air-Conditioners	5	0.14	Nos.	100757	124398	81.0
15 Refrigerators/Deep Freezers	5	0.31	Nos.	431518	507938	85.0
16 Safety Razor Blades	1	0.14	Mill. Nos.	788	737	106.9
17 Agricultural Implements	151	0.38	Nos.	10264	11086	92.6
i) Chaff Cutter	54			6828	7396	92.3
ii) Sugarcane Machines	35			57	70	81.4
iii) Wheat Thrashers	30			110	111	99.1
iv) Others (Misc. Imp.)	43			3269	3509	93.2
18 Textiles Machinery	29	0.01		341	257	132.7
i) Power Looms	20		Nos.	309	227	136.1
ii) Bobbins	5		000 Nos.	0	0	
iii) Shuttles	6		000 Nos.	32	30	106.7
General Index*	2041	72.14		190.7	182.8	104.3

* Average Index of eight months.

Table 5: Total Employment Regarding Large-Scale Industries, January-2022, February-2022 and February-2021

Groups/Items		No. of Units Covered in Feb: 2022	Jan: 2022	Feb: 2022	Feb: 2021	Index of Employment	
						Feb: 2022 with Jan: 2022	Feb: 2022 with Feb: 2021
I	Food Drinks & Tobacco	910					
1	Vegetable Ghee/Cooking Oil	44	5339	5351	5022	100.2	106.6
2	Dairy Products	8	1773	2051	2748	115.7	74.6
3	Wheat Milling	776	10090	10116	9135	100.3	110.7
4	Sugar	44	37983	37613	36376	99.0	103.4
5	Tea (Blended)	3	1377	1377	1493	100.0	92.2
6	Starch & its Products	2	1822	1824	2137	100.1	85.4
7	Soft Drinks & Juices	30	7719	7925	8174	102.7	97.0
8	Cigarettes	3	676	648	654	95.9	99.1
II	Textiles	313					
1	Cotton Textiles	285	158294	158540	154695	100.2	102.5
2	Woolen Textiles	21	1098	1103	1309	100.5	84.3
3	Jute Textiles	7	5265	5281	4795	100.3	110.1
III	Leather Rubber & Plastic Products	147					
1	Leather Tanning	106	2138	2194	2440	102.6	89.9
2	Footwear	41	12085	12092	10633	100.1	113.7
IV	Plywood	6	95	86	77	90.5	111.7
V	Paper & Paper Board	47					
1	Paper & Paper Board	47	5036	5025	5273	99.8	95.3
VI	Chemicals & Petroleum Products	139					
1	Pharmaceuticals	36	8055	8063	7424	100.1	108.6
2	Basic Inorganic Chemicals	8	2178	2207	2643	101.3	83.5
3	Fertilizers	7	5564	5562	5589	100.0	99.5
4	Paints & Varnishes	12	2275	2337	2309	102.7	101.2
5	Tyres & Tubes	6	1322	1328	1169	100.5	113.6
6	Soap	62	2799	2808	3043	100.3	92.3
7	Matches	2	458	458	429	100.0	106.8
8	Synthetic Fibre	4	1776	1776	1774	100.0	100.1
9	Petroleum Products	2	963	963	873	100.0	110.3
VII	Non-Metallic & Mineral Products	21					
1	Glass Sheets	9	614	614	608	100.0	101.0
2	Cement	12	8065	8059	8160	99.9	98.8
VIII	Engineering Products	458					
1	Steel Bars/ Angles	40	1070	1080	1108	100.9	97.5
2	Fabricated Metal Products/HMC	1	16	16	16	100.0	100.0
3	Tractors	4	500	500	500	100.0	100.0
4	Automobile Cars/Trucks	1	1150	1150	1150	100.0	100.0
5	Diesel Engines	15	21	21	21	100.0	100.0
6	Motor Cycles	17	3249	3260	3010	100.3	108.3
7	Bicycles	3	686	686	686	100.0	100.0
8	Electric Fans	126	2010	2050	2040	102.0	100.5
9	Electric Transformers	3	2680	2680	2680	100.0	100.0
10	Electric Motors	30	195	194	210	99.5	92.4
11	Electric Meters	4	1200	1200	1200	100.0	100.0
12	Switch Gears	3	12	12	12	100.0	100.0
13	Washing Machines	20	305	301	280	98.7	107.5
15	Air-Conditioners/Refrigerators/Deep Freezer	10	2153	2153	2153	100.0	100.0
16	Safety Razor Blades	1	745	745	744	100.0	100.1
17	Agricultural Implements	151	422	393	453	93.1	86.8
18	Textiles Machinery	29	79	79	103	100.0	76.7
Total		2041	301352	301921	295348	100.2	102.2

Table 6: Total Number of Production Workers Regarding Large-Scale Industries, January-2022, February-2022 and February-2021

Groups/Items		No. of Units Covered in Feb: 2022	Jan: 2022	Feb: 2022	Feb: 2021	Index of Employment	
						Feb: 2022 with Jan: 2022	Feb: 2022 with Feb: 2021
I	Food Drinks & Tobacco	910					
1	Vegetable Ghee/Cooking Oil	44	3324	3332	3203	100.2	104.0
2	Dairy Products	8	1258	1288	1594	102.4	80.8
3	Wheat Milling	776	6175	6191	5632	100.3	109.9
4	Sugar	44	24135	24047	23628	99.6	101.8
5	Tea (Blended)	3	1054	1054	1174	100.0	89.8
6	Starch & its Products	2	1678	1680	1951	100.1	86.1
7	Soft Drinks & Juices	30	3814	3973	4230	104.2	93.9
8	Cigarettes	3	523	509	484	97.3	105.2
II	Textiles	313					
1	Cotton Textiles	285	132490	132610	131173	100.1	101.1
2	Woolen Textiles	21	800	808	1021	101.0	79.1
3	Jute Textiles	7	4838	4853	4360	100.3	111.3
III	Leather Rubber & Plastic Products	147					
1	Leather Tanning	106	1441	1489	1644	103.3	90.6
2	Footwear	41	9206	9209	8067	100.0	114.2
IV	Plywood	6	76	70	62	92.1	112.9
V	Paper & Paper Board	47					
1	Paper & Paper Board	47	3616	3600	3821	99.6	94.2
VI	Chemicals & Petroleum Products	139					
1	Pharmaceuticals	36	3323	3324	3476	100.0	95.6
2	Basic Inorganic Chemicals	8	1381	1379	2116	99.9	65.2
3	Fertilizers	7	3658	3633	3591	99.3	101.2
4	Paints & Varnishes	12	985	1022	991	103.8	103.1
5	Tyres & Tubes	6	1024	1030	978	100.6	105.3
6	Soap	62	2212	2225	2386	100.6	93.3
7	Matches	2	404	404	372	100.0	108.6
8	Synthetic Fibre	4	1471	1471	1490	100.0	98.7
9	Petroleum Products	2	480	480	408	100.0	117.6
VII	Non-Metalic & Mineral Products	21					
1	Glass Sheets	9	451	451	445	100.0	101.3
2	Cement	12	5357	5358	5570	100.0	96.2
VIII	Engineering Products	458					
1	Steel Bars/ Angles	40	785	788	815	100.4	96.7
2	Fabricated Metal Products/HMC	1	11	11	11	100.0	100.0
3	Tractors	4	366	366	366	100.0	100.0
4	Automobile Cars/Trucks	1	860	860	860	100.0	100.0
5	Diesel Engines	15	15	15	15	100.0	100.0
6	Motor Cycles	17	2300	2320	1940	100.9	119.6
7	Bicycles	3	527	527	527	100.0	100.0
8	Electric Fans	126	1730	1760	1700	101.7	103.5
9	Electric Transformers	3	1980	1980	1980	100.0	100.0
10	Electric Motors	30	150	150	160	100.0	93.8
11	Electric Meters	4	955	955	955	100.0	100.0
12	Switch Gears	3	10	10	10	100.0	100.0
13	Washing Machines	20	225	222	204	98.7	108.8
15	Air-Conditioners/Refrigerators/Deep Freezer	10	1845	1845	1845	100.0	100.0
16	Safety Razor Blades	1	591	591	590	100.0	100.2
17	Agricultural Implements	151	346	325	372	93.9	87.4
18	Textiles Machinery	29	68	69	86	101.5	80.2
Total		2041	227938	228284	226303	100.2	100.9

Table 7: Average Monthly Total Employment Regarding Large-Scale Industries, 2021-22 (Jul-Feb): VS 2020-21 (Jul-Feb):

Groups/Items		No. of Units Covered in Feb: 2022	2021-22 (Jul-Feb:)	2020-21 (Jul-Feb:)	2021-22 (Jul-Feb:) with 2020-21 (Jul-Feb:)
I	Food Drinks & Tobacco	910			
1	Vegetable Ghee/Cooking Oil	44	5262	5083	103.5
2	Dairy Products	8	2333	2830	82.4
3	Wheat Milling	776	10074	8918	113.0
4	Sugar	44	29405	29698	99.0
5	Tea (Blended)	3	1397	1428	97.8
6	Starch & its Products	2	1900	2138	88.8
7	Soft Drinks & Juices	30	8039	7840	102.5
8	Cigarettes	3	662	659	100.5
II	Textiles	313			
1	Cotton Textiles	285	156571	155065	101.0
2	Woolen Textiles	21	1143	1303	87.8
3	Jute Textiles	7	4907	4421	111.0
III	Leather Rubber & Plastic Products	147			
1	Leather Tanning	106	2320	2514	92.3
2	Footwear	41	11821	9836	120.2
IV	Plywood	6	103	80	129.8
V	Paper & Paper Board	47			
1	Paper & Paper Board	47	5029	5050	99.6
VI	Chemicals & Petroleum Products	139			
1	Pharmaceuticals	36	8081	7984	101.2
2	Basic Inorganic Chemicals	8	2372	2613	90.8
3	Fertilizers	7	5556	5757	96.5
4	Paints & Varnishes	12	2294	2247	102.1
5	Tyres & Tubes	6	1313	1175	111.7
6	Soap	62	2858	3014	94.8
7	Matches	2	458	422	108.6
8	Synthetic Fibre	4	1776	1768	100.5
9	Petroleum Products	2	976	887	110.0
VII	Non-Metallic & Mineral Products	21			
1	Glass Sheets	9	613	608	100.9
2	Cement	12	8132	7795	104.3
VIII	Engineering Products	458			
1	Steel Bars/ Angles	40	1077	1058	101.8
2	Fabricated Metal Products/HMC	1	16	16	104.0
3	Tractors	4	500	521	95.9
4	Automobile Cars/Trucks	1	1150	1147	100.3
5	Diesel Engines	15	21	20	106.3
6	Motor Cycles	17	3181	3018	105.4
7	Bicycles	3	686	687	99.8
8	Electric Fans	126	2111	2122	99.5
9	Electric Transformers	3	2680	2693	99.5
10	Electric Motors	30	203	188	107.8
11	Electric Meters	4	1200	1210	99.2
12	Switch Gears	3	12	12	100.0
13	Washing Machines	20	298	282	105.4
15	Air-Conditioners/Refrigerators/Dee	10	2153	2159	99.7
16	Safety Razor Blades	1	745	744	100.1
17	Agricultural Implements	151	420	406	103.5
18	Textiles Machinery	29	77	97	80.1
Total		2041	291922	287508	101.5

Table 8: Average Monthly Number of Production Workers Regarding Large-Scale Industries, 2021-22 (Jul-Feb): VS 2020-21 (Jul-Feb):

Groups/Items		No. of Units Covered in Feb: 2022	2021-22 (Jul-Feb:)	2020-21 (Jul-Feb:)	2021-22 (Jul-Feb:) with 2020-21 (Jul-Feb:)
I	Food Drinks & Tobacco	910			
1	Vegetable Ghee/Cooking Oil	44	3258	3270	99.6
2	Dairy Products	8	1380	1650	83.6
3	Wheat Milling	776	6155	5407	113.8
4	Sugar	44	18590	19073	97.5
5	Tea (Blended)	3	1079	1149	93.9
6	Starch & its Products	2	1758	1952	90.0
7	Soft Drinks & Juices	30	4091	3921	104.3
8	Cigarettes	3	502	497	100.8
II	Textiles	313			
1	Cotton Textiles	285	131663	129828	101.4
2	Woolen Textiles	21	863	1017	84.9
3	Jute Textiles	7	4538	3834	118.3
III	Leather Rubber & Plastic Products	147			
1	Leather Tanning	106	1620	1815	89.3
2	Footwear	41	9075	7525	120.6
IV	Plywood	6	80	65	122.2
V	Paper & Paper Board	47			
1	Paper & Paper Board	47	3605	3614	99.7
VI	Chemicals & Petroleum Products	139			
1	Pharmaceuticals	36	3315	3436	96.5
2	Basic Inorganic Chemicals	8	1663	2082	79.9
3	Fertilizers	7	3628	3563	101.8
4	Paints & Varnishes	12	965	935	103.2
5	Tyres & Tubes	6	1017	980	103.8
6	Soap	62	2246	2353	95.5
7	Matches	2	401	373	107.4
8	Synthetic Fibre	4	1471	1485	99.1
9	Petroleum Products	2	470	430	109.5
VII	Non-Metalic & Mineral Products	21			
1	Glass Sheets	9	449	445	100.9
2	Cement	12	5515	5201	106.0
VIII	Engineering Products	458			
1	Steel Bars/ Angles	40	788	768	102.6
2	Fabricated Metal Products/HMC	1	11	11	104.8
3	Tractors	4	365	364	100.1
4	Automobile Cars/Trucks	1	860	860	100.0
5	Diesel Engines	15	15	14	109.1
6	Motor Cycles	17	2277	1935	117.7
7	Bicycles	3	527	528	99.8
8	Electric Fans	126	1788	1707	104.8
9	Electric Transformers	3	1980	1994	99.3
10	Electric Motors	30	158	142	111.1
11	Electric Meters	4	955	964	99.0
12	Switch Gears	3	10	10	100.0
13	Washing Machines	20	217	205	105.7
15	Air-Conditioners/Refrigerators/Dec	10	1845	1870	98.7
16	Safety Razor Blades	1	591	590	100.1
17	Agricultural Implements	151	339	331	102.4
18	Textiles Machinery	29	66	80	83.2
Total		2041	222186	218272	101.8

PERFORMANCE OF COTTON TEXTILE INDUSTRY

Report for the month of February 2022

Coverage

This report covers Two Hundred & Eighty Five (285) Cotton Textiles Mills, Producing yarn and cloth.

Spindles/Rotors/Looms	Installed	Average Worked	% Utilization
Spindles	8340571	6368042	76.4%
Rotors	55817	37510	67.2%
Looms	8560	6430	75.1%

MANUFACTURING ACTIVITY (FEBRUARY 2022)

Production, Consumption and Stock of Cotton Bales

Textile mills purchased 964421 Bales of Cotton during the month, which is 5.9% lower than January 2022. These mills consumed 676888 of Cotton Bales to manufacture Yarn that is 12.9% lower than the last month. The stock of Cotton Bales at the end of the month was 4224847 Bales.

Production, Consumption and Sale of Cotton Yarn

The production of Cotton Yarn during the month was 83590 thousand kgs. Which is 0.1% higher than January 2022. The mills consumed 19968 thousand kgs. Of Cotton Yarn to manufacture Cotton Cloth, during the month, 82999 thousand kgs. Of Cotton Yarn was sold by the textile mills which was 2.6% higher than the January 2022. The Export of Cotton Yarn during the month was 16375 thousand kgs. Which was 18.6% higher than the last month.

Production and Sale of Cotton Cloth

The production of Cotton Cloth during the month was 57999 thousand Metres. Which is 0.1% higher than the last month, 56594 thousand Metres. Of Cotton Cloth was sold, out of which 19551 thousand Metres was exported by the Textile Mills during the month which was 6.0% lower than last month.

Production of Man Made/Blended Yarn and Cloth

The production of Man Made/Blended Yarn was 53416 thousand kgs. which is 0.1% lower than the last month. The production of Man Made/Blended Cloth was 9916 thousand Mtrs. which is 0.6% higher than the last month.

Employment and Wages/Salaries

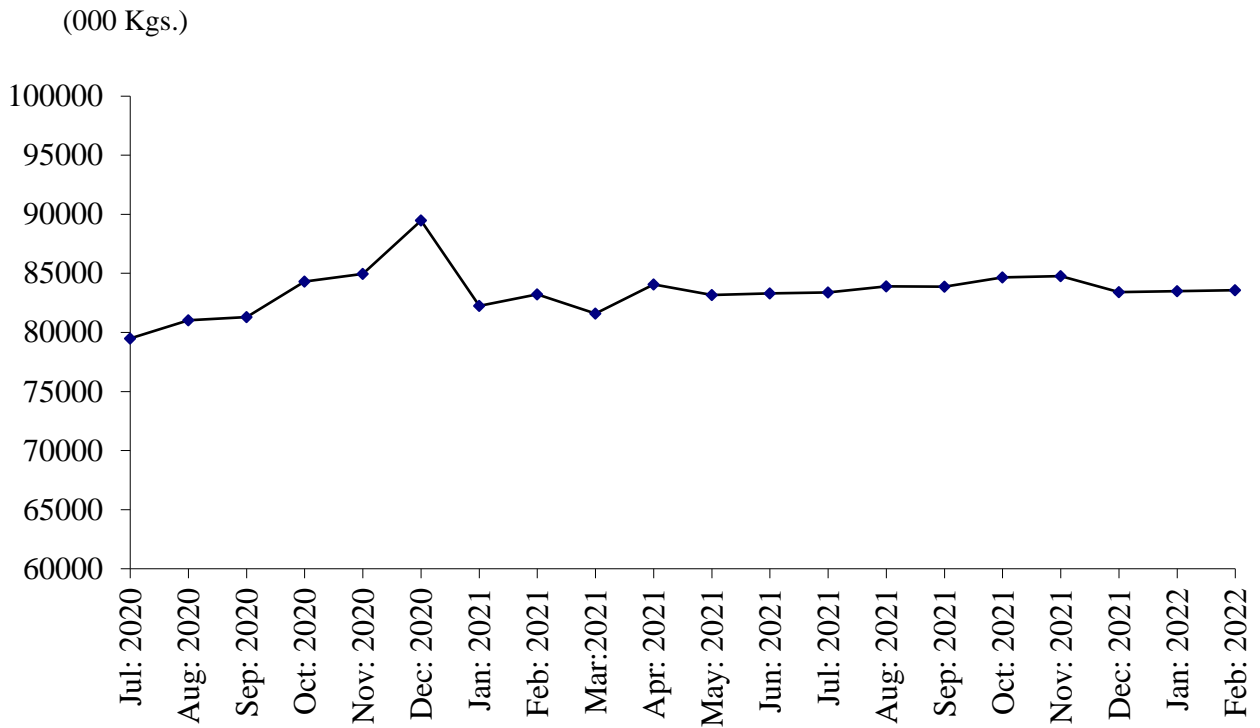
Total employment during the month was 158540 Out of this total employment, 132610 were production workers. Total wages/salaries for the month amounted to 3199.5 Million Rupees.

Production of Man Made/Blended Yarn and Cloth (Since July 2020)

Month/Year	Man Made / Blended Yarn (000 Kgs.)		Man Made / Blended Cloth (000.Mtrs.)	
	2020-21	2021-22	2020-21	2021-22
<u>July- Feb:</u>	<u>403143</u>	<u>425309</u>	<u>42314</u>	<u>76504</u>
July	45621	55304	5362	7807
August	47580	52332	5325	9990
September	47679	52108	5445	9644
October	48380	52419	5325	9699
November	48490	52985	5390	9624
December	48531	53313	5303	9966
January	60694	53432	5411	9858
February	56168	53416	4753	9916
March	58111		4769	
April	55802		5190	
May	56163		4864	
June	55248		5108	

PRODUCTION OF COTTON YARN

July 2020 to February 2022



PRODUCTION OF COTTON CLOTH

July 2020 to February 2022

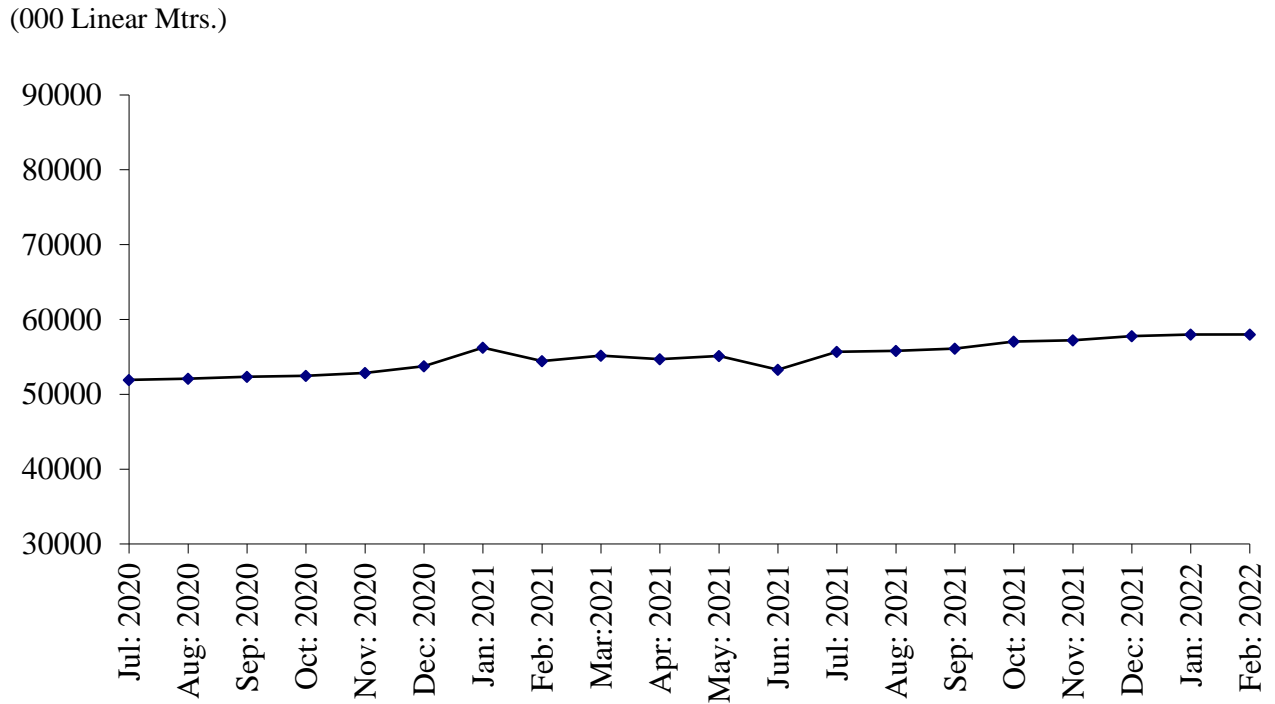


TABLE 10: DETAIL OF THE PURCHASE, SALE, CONSUMPTION AND STOCK OF COTTON BALES.

(one Bale = 170 Kg)

Year (July-June)/ Month	No. Of Reporting Mills	Purchase	Sale	Consumed for Spinning	Stock at the end of Year/Month
2005-06	250	8718973	609484	8247206	1979078
2006-07	268	9067493	395172	8691665	1959734
2007-08	268	8457435	451365	7987689	1978115
2008-09	268	7284896	483579	7100353	1679079
2009-10	268	8143340	505951	7889680	1426788
2010-11	274	8801855	484794	8596317	1147532
2011-12	274	8025974	387146	7286551	1499809
2012-13	277	8618084	326690	7863746	1927457
2013-14	277	8301002	434565	7838753	1955141
2014-15	277	8281619	550118	7819131	1867511
2015-16	290	7263140	330272	7085902	1714477
2016-17	290	8271104	587127	7802375	1596079
2017-18	299	8157127	412752	7459759	1880695
2018-19	299	8156763	448409	7552656	2036393
2019-20	299	6953009	399666	6319497	2270239
2020-21	285	8478928	314792	7320669	3113706
(Jul: – Feb:)	<u>285</u>	<u>5445803</u>	<u>154259</u>	<u>4536765</u>	<u>3025018</u>
Jul:	285	420421	17941	505740	2166979
Aug:	285	459592	30479	604039	1992053
Sep:	285	518489	11901	602527	1896114
Oct:	285	688237	15162	602823	1966366
Nov:	285	795910	13915	646925	2101436
Dec:	285	956602	42291	547929	2467818
Jan:	285	837434	11353	525077	2768822
Feb:	285	769118	11217	501705	3025018
Mar:	285	728443	17197	542855	3193409
Apr:	285	764048	30128	780296	3147033
May	285	822847	26564	858738	3084578
June	285	717787	86644	602015	3113706
<u>2021-22</u>					
(Jul: – Feb:)	<u>285</u>	<u>8102391</u>	<u>1103980</u>	<u>5887270</u>	<u>4224847</u>
Jul:	285	714986	31523	677441	3119728
Aug:	285	590918	50396	649939	3010311
Sep:	285	943166	146879	733099	3073499
Oct:	285	1602969	124703	707058	3844707
Nov:	285	1388987	29269	838596	4365829
Dec:	285	995600	291992	827294	4242143
Jan:	285	961344	211704	776955	4214828
Feb:	285	904421	217514	676888	4224847

TABLE11: PRODUCTION, PURCHASE, CONSUMPTION, SALE AND STOCK OF COTTON YARN

(000 Kgs)

Year (July-June)/ Month	No. of Reporting Mills	Production	Purchase	Consumed	SALE			Stock at the end of Year/ Month
					Total	Within Country	Exported	
2005-06	233	823773	163778	138771	858740	569794	284946	36649
2006-07	250	935996	155461	161905	929558	648260	281298	36643
2007-08	263	869531	182463	185558	853110	626939	226171	49969
2008-09	263	744478	138920	150092	736453	562275	174178	46822
2009-10	263	824100	93550	108458	809044	646616	162428	46970
2010-11	263	861278	86884	107441	843590	672067	171523	44101
2011-12	263	807305	83157	76949	824281	661528	162753	33333
2012-13	274	892200	116081	106323	898240	651670	246570	37051
2013-14	274	939965	129796	132378	931890	720629	211561	42544
2014-15	289	982172	132904	139454	974797	750512	224285	43369
2015-16	292	987258	139201	162386	962945	753246	209699	44497
2016-17	290	1063645	143722	153715	1056034	857310	198724	42115
2017-18	247	1082179	191064	179554	1090682	857987	232695	45122
2018-19	247	1075008	186447	178128	1082390	888248	194132	46059
2019-20	247	976627	221511	180109	997528	812952	184576	66560
2020-21	247	998181	342664	169862	1182999	991173	191826	54544
(Jul: – Feb:)	<u>247</u>	<u>666017</u>	<u>190807</u>	<u>120095</u>	<u>741475</u>	<u>621245</u>	<u>120230</u>	<u>61814</u>
Jul:	247	79495	23104	16322	88055	72400	15655	64782
Aug:	247	81022	20256	15980	82899	70177	12722	67181
Sep:	247	81303	21095	15303	88972	75985	12987	65304
Oct:	247	84302	20492	14302	96541	81085	15456	59255
Nov:	247	84959	18333	15868	91882	78846	13036	54797
Dec:	247	89470	21070	16389	92684	77535	15149	56264
Jan:	247	82242	30479	12616	94757	76722	18035	61612
Feb:	247	83224	35978	13315	105685	88495	17190	61814
Mar:	247	81613	37191	12416	106291	90239	16052	61911
Apr:	247	84079	38712	11317	110473	92443	18030	62912
May	247	83165	41255	9801	116121	97942	18179	61410
Jun:	247	83307	34699	16233	108639	89304	19335	54544
<u>2021-22</u>								
(Jul: – Feb:)	<u>247</u>	<u>671151</u>	<u>173217</u>	<u>137914</u>	<u>703689</u>	<u>571006</u>	<u>132683</u>	<u>57309</u>
July	247	83388	25366	8227	98638	79839	18799	56433
Aug:	247	83907	23576	9282	103674	84065	19609	50960
Sep:	247	83887	20276	17841	84806	70081	14725	52476
Oct:	247	84671	20701	18511	84538	69940	14598	54799
Nov:	247	84772	21556	20848	84334	66359	17975	55945
Dec:	247	83428	20486	22634	83752	66955	16797	53473
Jan:	247	83508	20624	20603	80932	67143	13805	56054
Feb:	247	83590	20632	19968	82999	66624	16375	57309

TABLE 12: PRODUCTION, PURCHASE, SALE AND STOCK OF COTTON CLOTH.

(000 Mtrs.)

Year (July-June)/ Month	No. Of Reporting Mills	Production	Purchased	SALE			Stock at the end of Year/ Month
				Total	Within Country	Exported	
2005-06	50	340015	91453	440511	191528	248983	49828
2006-07	50	421403	93715	508661	267082	241579	56285
2007-08	52	401275	22913	410559	245425	165134	69914
2008-09	52	350406	52966	397698	207800	189898	75588
2009-10	52	369035	62330	438802	258870	179932	68151
2010-11	53	377058	27814	411759	273413	138346	61264
2011-12	53	324906	26410	354262	245679	108583	58318
2012-13	56	337955	39613	384441	227950	156491	51445
2013-14	56	414827	44459	454427	230989	223438	56304
2014-15	57	468206	33332	500905	297034	203871	56937
2015-16	57	522412	18246	542268	325894	216374	55327
2016-17	58	670884	42791	703647	431374	272273	65355
2017-18	39	703513	44908	749157	439486	309671	64619
2018-19	39	697096	38577	751178	456319	294859	49114
2019-20	39	650187	30785	658431	455655	202776	71655
2020-21	38	644439	48331	699107	513618	185489	65318
(Jul: – Feb:)	<u>39</u>	<u>426136</u>	<u>23212</u>	<u>465796</u>	<u>332975</u>	<u>132821</u>	<u>55207</u>
Jul:	39	51930	4292	55306	37711	17595	72571
Aug:	39	52093	2687	54111	37008	17103	73240
Sep:	39	52342	2685	57818	38891	18927	70449
Oct:	39	52493	2829	59370	41714	17656	66401
Nov:	39	52861	2636	57006	42213	14793	64892
Dec:	39	53738	1469	57710	41703	16007	62389
Jan:	39	56232	2675	59700	44259	15441	61596
Feb:	39	54447	3939	64775	49476	15299	55207
Mar:	39	55186	3015	62744	48825	13919	50664
Apr:	39	54708	53112	53096	40883	12229	55180
May:	39	55104	6397	53177	40777	12400	63504
Jun:	39	53305	12787	64278	50158	14120	65318
<u>2021-22</u>							
(Jul: – Feb:)	<u>39</u>	<u>455603</u>	<u>42691</u>	<u>486107</u>	<u>344566</u>	<u>141541</u>	<u>77505</u>
Jul:	38	55662	12787	63374	51764	11610	70393
Aug:	38	55805	14537	71790	53582	18208	68945
Sep:	38	56124	3019	58336	42284	16052	69752
Oct:	38	57045	4417	56074	40706	15368	75140
Nov:	38	57200	4149	58292	41233	17059	78197
Dec:	38	57790	1234	63512	40608	22904	73709
Jan:	38	57978	1121	58135	37346	20789	74673
Feb:	38	57999	1427	56594	37043	19551	77505

TABLE 13: EMPLOYMENT AND WAGES/SALARIES

Year (July-June)/ Month	No. Of Reporting Mills	E M P L O Y M E N T (Nos.)*			WAGES/SALARIES (000 Rs.)		
		Total	Production Workers	Office Staff	Total	Production Workers	Office Staff
2005-06	271	172178	150444	21734	636119	491910	144209
2006-07	288	183201	158112	25089	791772	620130	171642
2007-08	288	176643	152036	24607	842722	661182	181540
2008-09	288	162984	139152	23832	802438	629608	172830
2009-10	288	168727	144487	24240	944137	750701	193436
2010-11	295	166718	142756	23962	1149580	893633	255947
2011-12	295	163535	140315	23220	1171743	926744	245002
2012-13	280	169697	144411	25286	1323153	1043134	280586
2013-14	281	172129	144216	27913	1627528	1286234	341294
2014-15	289	170528	143048	27480	1734882	1372957	361925
2015-16	289	164049	135777	28272	1925533	1497525	423209
2016-17	298	165251	133259	31992	2069106	1599857	469249
2017-18	299	161727	133190	28537	2251084	1756455	494629
2018-19	299	157846	131085	26761	2438412	1891246	247166
2019-20	299	151851	126203	25648	2501885	1973563	528322
2020-21	285	154706	129886	24820	2816361	2213454	602907
(Jul: – Feb:)	<u>285</u>	<u>155065</u>	<u>129828</u>	<u>25237</u>	<u>2736369</u>	<u>2149215</u>	<u>587154</u>
Jul:	285	153912	127856	26056	2676033	2081604	594429
Aug:	285	153676	127612	26064	2670495	2082748	587747
Sep:	285	153770	128589	25181	2703708	2088684	615024
Oct:	285	154540	129478	25062	2737557	2115727	621830
Nov:	285	156015	130878	25137	2686278	2162141	524137
Dec:	285	156917	131480	25437	2746711	2191693	555018
Jan:	285	156997	131555	25442	2761028	2191900	642335
Feb	285	154695	131173	23522	2909143	2279219	629924
Mar:	285	154612	131096	23516	2987996	2357335	630661
Apr:	285	152853	128712	24141	3008502	2385422	623080
May	285	154841	130745	24096	2793503	2206243	587260
Jun	285	154841	130745	24096	2793503	2206243	596463
<u>2021-22</u>							
(Jul: – Feb:)	<u>285</u>	<u>156583</u>	<u>131663</u>	<u>24920</u>	<u>3101935</u>	<u>2396025</u>	<u>705910</u>
Jul:	285	154695	130621	24074	2812038	2219728	592310
Aug:	285	156003	131674	24329	3055240	2374009	681231
Sep:	285	155803	131402	24401	3096924	2394889	702035
Oct:	285	156075	131460	24615	3097145	2388151	708994
Nov:	285	156507	131457	25050	3192910	2448728	744182
Dec:	285	156748	131590	25158	3181397	2451990	729407
Jan:	285	158294	132490	25804	3180335	2441813	738522
Feb:	285	158540	132610	24930	3199488	2448892	750596

* = *Monthly averages over eight months.*

PERFORMANCE OF WOOLLEN TEXTILE INDUSTRY

Report for the month of February 2022

Coverage

This report covers Twenty One (21) Woollen Textile Mills of the Punjab.

Production

The Woollen Textile Mills Produced 558 thousand Kgs. of Woollen Yarn, and nil Production of Knitting Wool during the month of February 2022. The production of Woollen Yarn was 0.7% higher than the last month and Knitting Wool was same as the last month respectively.

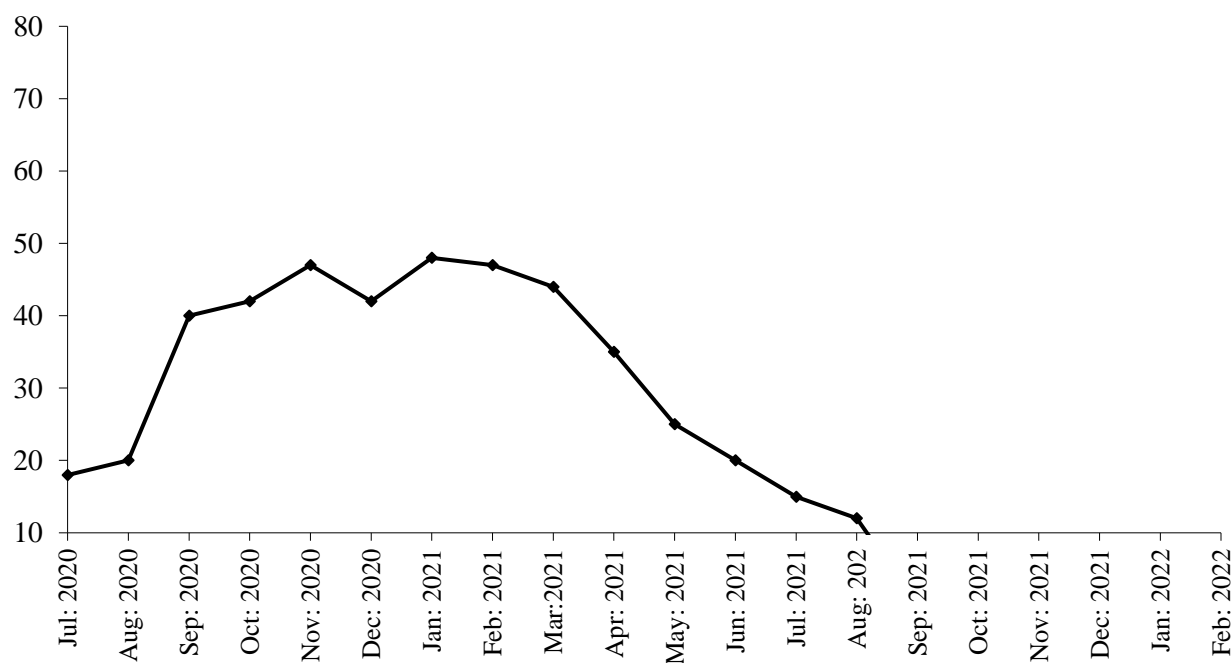
Employment

Total employment in Woollen Textile Mills during the month was 1101 which was 0.3% higher the last month. Out of this total employment, 808 were production workers.

PRODUCTION OF KNITTING WOOL

July 2020 to February 2022

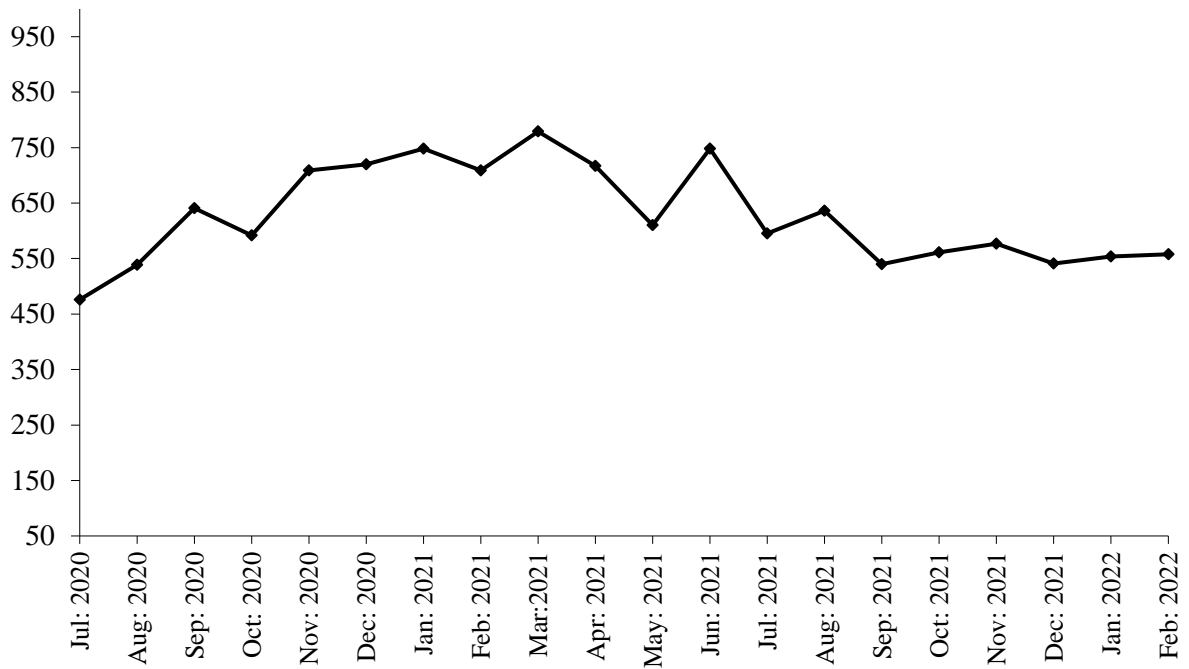
(000 Kg.)



PRODUCTION OF WOOLEN YARN

July 2020 to February 2022

(000 Kg.)



PRODUCTION OF WOOLEN WORSTED CLOTH

July 2020 to February 2022

(000 Mtrs.)

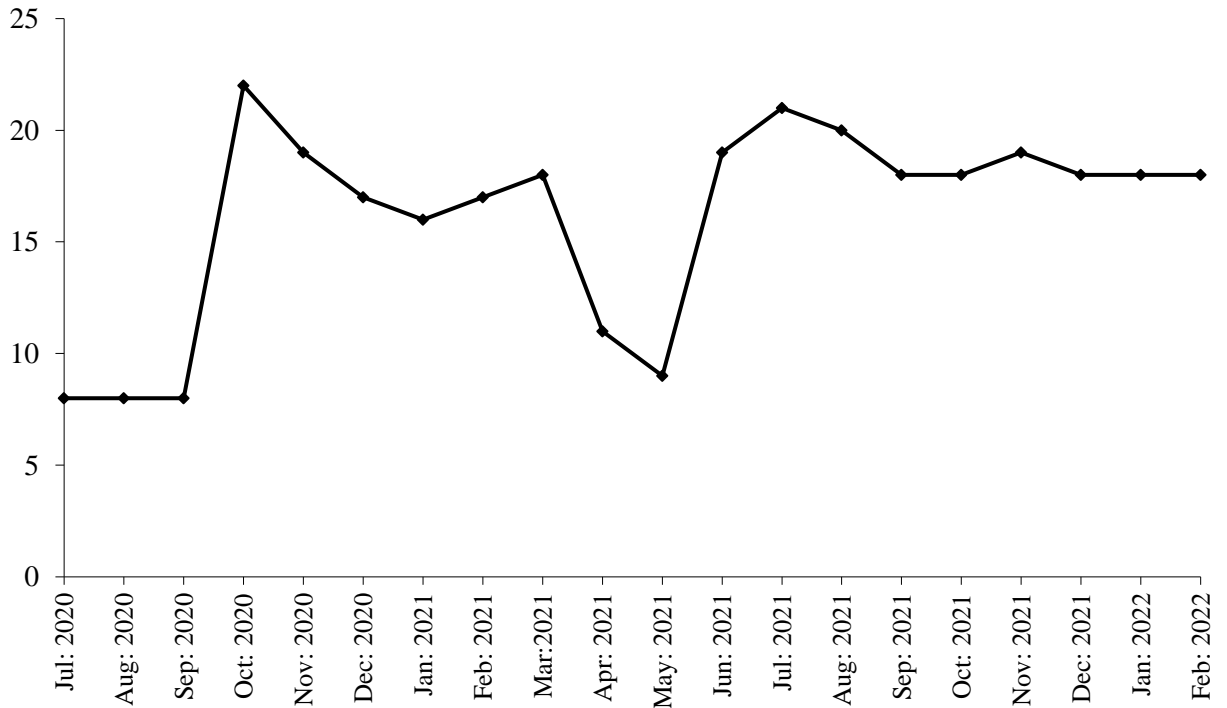


TABLE 13: MANUFACTURING ACTIVITY OF WOOLLEN INDUSTRY.

Year (July-June)/ month	No. Of Reporting Units	PRODUCTION				EMPLOYMENT (Nos.) *	
		Woollen Yarn (M.Tons)	Knitting Wool (M.Tons)	Woollen Worsted Cloth (000 Mtrs.)	Blankets (Nos.)	Total	Production Workers
2005-06	27	1020	3135	670	2920	1772	1369
2006-07	27	1056	3263	612	-	1675	1309
2007-08	27	1194	3306	819	-	1719	1401
2008-09	27	1046	2778	991	-	1787	1476
2009-10	27	1154	2565	825	-	1797	1491
2010-11	27	1037	2351	844	-	1729	1478
2011-12	27	826	2097	808	-	1680	1405
2012-13	27	740	2250	592	-	1661	1413
2013-14	27	864	1633	221	-	1410	1153
2014-15	27	1510	1805	243	-	1301	1037
2015-16	27	1334	1963	246	-	1252	998
2016-17	27	1738	1898	226	-	1318	1056
2017-18	26	2159	1673	160	-	1397	1116
2018-19	26	2114	1628	11	-	1372	1096
2019-20	21	2731	883	79	-	1318	1055
2020-21	21	7988	428	172	-	1303	1017
(Jul: – Feb:)	<u>21</u>	<u>5134</u>	<u>304</u>	<u>115</u>	<u>=</u>	<u>1303</u>	<u>1017</u>
Jul:	26	476	18	8	-	1319	1043
Aug:	26	539	20	8	-	1304	1018
Sept:	26	641	40	8	-	1302	1018
Oct:	26	592	42	22	-	1304	1016
Nov:	26	709	47	19	-	1305	1017
Dec:	26	720	42	17	-	1271	983
Jan:	26	748	48	16	-	1306	1018
Feb:	26	709	47	17	-	1309	1021
Mar:	26	779	44	18	-	1310	1022
Apr:	26	717	35	11	-	1308	1020
May	26	610	25	9	-	1301	1013
Jun:	26	748	20	19	-	1299	1013
<u>2021-22</u>							
(Jul: – Feb:)	<u>21</u>	<u>4562</u>	<u>27</u>	<u>150</u>	<u>=</u>	<u>1143</u>	<u>863</u>
Jul:	21	595	15	21	-	1283	999
Aug:	21	636	12	20	-	1273	989
Sep:	21	540	-	18	-	1125	854
Oct:	21	561	-	18	-	1124	853
Nov:	21	577	-	19	-	1125	854
Dec:	21	541	-	18	-	1014	749
Jan:	21	554	-	18	-	1098	800
Feb:	21	558	-	18	-	1101	808

* = Monthly Average over the eight months..

PERFORMANCE OF VEGETABLE GHEE/COOKING OIL INDUSTRY

Report for the month of February 2022

Coverage

This report covers Fifty (44) Vegetable Ghee/Cooking Oil Mills of the Punjab Province.

Purchase, Consumption and Stock of Edible Oil

During the month of February 2022, about 32027 metric tons Local Oil and 51043 metric tons Imported Palm Oil was purchased by the Mills, meanwhile, about 11904 metric tons Other Oil was produced as compared to 9883 metric tons produced in the last month. The Oil intake for production of Vegetable Ghee/Cooking Oil during the month was recorded at 62442 metric tons witnessed 4.1% decrease as compared to the last month. The stock of Oil at the end of the month was closed at 73014 metric tons.

Production, Sale and Stock of Vegetable Ghee/Cooking Oil

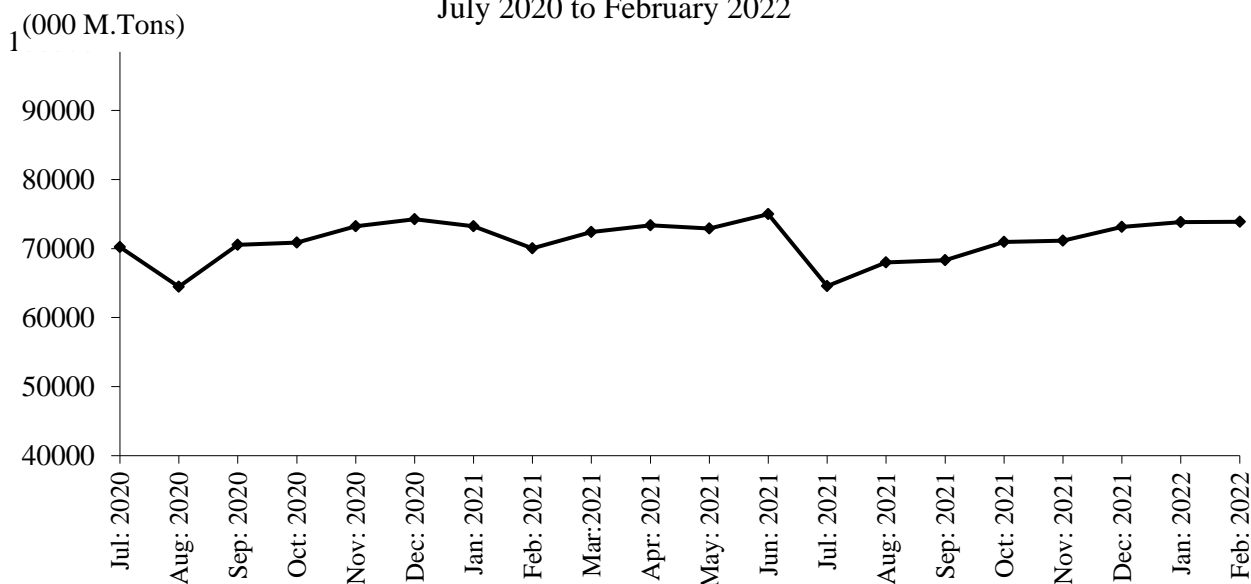
Vegetable Ghee and Cooking Oil production in the province during the month registered 0.1% percent increase and 0.2 percentage increase respectively as compared to the production in the last month the last month. The data revealed about 73864 metric tons & 16624 metric tons production of Vegetable Ghee and Cooking Oil during the month respectively. The sale of Vegetable Ghee/Cooking Oil during the month was 90488 metric tons witnessed 0.8% percent increase as compared to the last month. The stock of Vegetable Ghee/Cooking Oil closed at the end of the month at 9683 metric tons.

Employment and Wages/Salaries

Total employment recorded in the Mills of Vegetable Ghee/Cooking Oil during the month was 5351, 0.2% higher than the last month. Production workers was 3332 an amount of Rs.99.8 million was paid by the Mills against total wages/salaries for the month of February, 2022.

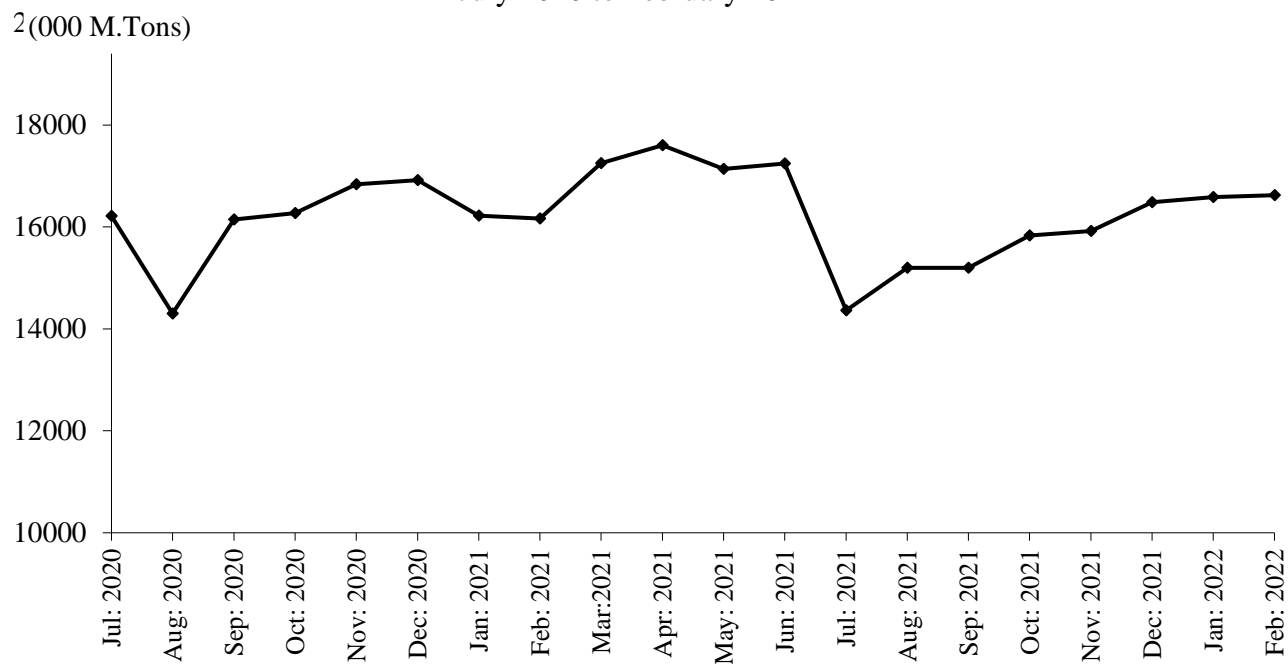
PRODUCTION OF VEGETABLE GHEE

July 2020 to February 2022



PRODUCTION OF COOKING OIL

July 2020 to February 2022



PRODUCTION OF VEGETABLE GHEE/COOKING OIL

July 2020 to February 2022

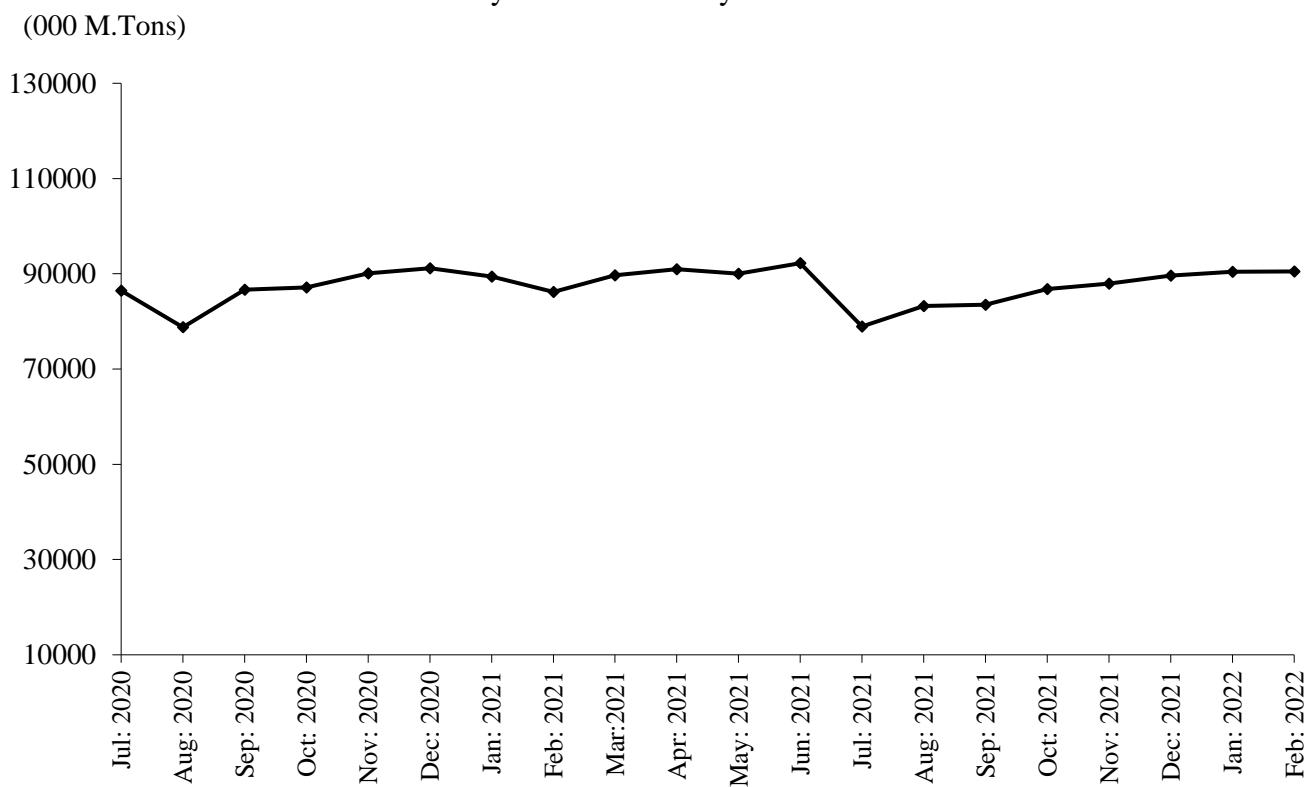


TABLE 15:DETAIL OF THE STOCK, PURCHASED, CONSUMED AND SALE OF EDIBLE OIL.

(M. Tons)

Year (July-June)/ Month	No. Of Repor- ting Mills	LOCALLY PURCHASED		PRODUCED		Impor- ted	Consumed / Sent for Refinery	Sold/ Trans- ferred	Stock at the end of Year/ Month
		Cotton Seed Oil	Other Oil	Cotton Seed Oil	Other Oil				
2005-06	54	25721	13052	-	11612	517096	561809	2195	27069
2006-07	54	8076	50042	-	4068	509698	576065	2730	20158
2007-08	54	-	92673	-	-	432703	530500	-	15034
2008-09	54	-	100857	-	5206	398310	487250	-	32157
2009-10	54	-	104202	-	25852	512468	615680	25090	33909
2010-11	54	327	183884	-	35675	482008	634601	77461	23741
2011-12	54	-	183112	-	34577	423778	607993	37657	19558
2012-13	54	-	229765	-	43652	431163	660016	33454	30668
2013-14	54	-	216660	-	38972	495070	696775	42965	41630
2014-15	53	-	162624	-	49151	585062	753658	50338	34471
2015-16	53	-	185823	-	44073	885878	885882	18622	40602
2016-17	50	-	220571	-	60257	633199	881071	39566	33992
2017-18	51	-	206532	-	83627	849072	1074228	60975	38020
2018-19	51	-	213910	-	92005	836051	1055742	77884	46360
2019-20	52	-	248945	-	60421	715798	921638	102073	47813
2020-21	50	-	374560	-	84020	578628	837241	176122	65658
(Jul: – Feb:)	<u>50</u>	<u>:-</u>	<u>246545</u>	<u>:-</u>	<u>46498</u>	<u>378507</u>	<u>559723</u>	<u>94134</u>	<u>65506</u>
Jul:	50	-	33051	-	6385	52185	76738	5928	56768
Aug:	50	-	30611	-	5519	47414	68311	5480	66521
Sep:	50	-	30323	-	5926	48361	69689	9378	72064
Oct:	50	-	26715	-	5553	44064	70195	14433	63768
Nov:	50	-	29165	-	5783	55467	77547	15022	61614
Dec:	50	-	30846	-	5241	41533	65895	14422	58917
Jan:	50	-	32867	-	6298	44445	65512	14539	62476
Feb:	50	-	32967	-	5793	45038	65836	14932	65506
Mar:	50	-	34096	-	7345	52980	69800	22851	67276
Apr:	50	-	26163	-	7291	48406	71240	19471	58425
May:	50	-	31327	-	9936	48873	68195	19817	60549
Jun:	50	-	33429	-	9950	49862	68283	19849	65658
<u>2021-22</u>									
(Jul: – Feb:)	<u>44</u>	<u>:-</u>	<u>224762</u>	<u>:-</u>	<u>96257</u>	<u>373453</u>	<u>489917</u>	<u>197199</u>	<u>73014</u>
Jul:	44	-	25776	-	10656	44694	63009	24424	59351
Aug:	44	-	23136	-	13397	44376	60793	21768	58299
Sep:	44	-	24527	-	13735	51782	57107	23189	68047
Oct:	44	-	25936	-	14770	44265	58513	23893	70612
Nov:	44	-	28598	-	11030	44050	58333	20075	75882
Dec:	44	-	33827	-	10882	46751	65239	25231	76872
Jan:	44	-	30935	-	9883	46492	65081	28256	70845
Feb:	44	-	32027	-	11904	51043	62442	30363	73014

TABLE 16:DETAIL OFPRODUCTION, SALE AND STOCK OF VEGETABLE GHEE/COOKING OIL

(M.Tons)

Year (July-June)/ Month	No. Of Repor- ting Mills	P R O D U C T I O N			Sale	Stock At the end
		Vegetable Ghee	Cooking Oil	Total		
2005-06	54	475707	75744	551451	551180	6370
2006-07	54	492595	71696	564291	562729	7932
2007-08	54	438129	55186	493315	494707	6540
2008-09	54	427976	60147	488123	486544	8119
2009-10	54	519765	87487	607252	606825	8546
2010-11	54	524809	96711	621520	622978	7088
2011-12	54	507688	93151	600839	600269	7658
2012-13	54	537111	119437	656548	654031	9059
2013-14	54	533628	20248	159078	156829	10897
2014-15	53	576943	102881	679824	679487	8985
2015-16	53	641889	113708	755597	755526	9057
2016-17	50	644550	110166	754716	755306	8170
2017-18	51	786226	127257	913483	912553	9100
2018-19	51	804497	152352	956849	944020	18074
2019-20	50	880796	193901	1074697	1076905	15866
2020-21	50	860505	198332	1058837	1063974	10729
(Jul: – Feb:)	<u>50</u>	<u>566849</u>	<u>129084</u>	<u>695933</u>	<u>698809</u>	<u>12990</u>
Jul:	50	70217	16217	86434	81371	20929
Aug:	50	64469	14303	78772	81859	17842
Sep:	50	70545	16149	86694	83651	20885
Oct:	50	70879	16271	87150	91521	16514
Nov:	50	73242	16836	90078	89413	17179
Dec:	50	74235	16922	91157	94941	13395
Jan:	50	73212	16221	89433	89500	13328
Feb:	50	70050	16165	86215	86553	12990
Mar:	50	72405	17255	89660	90178	12472
Apr:	50	73368	17604	90972	92303	11141
May	50	72905	17142	90047	89031	12157
Jun:	50	74978	17247	92225	93653	10729
<u>2021-22</u>						
(Jul: – Feb:)	<u>44</u>	<u>563787</u>	<u>126221</u>	<u>690008</u>	<u>691054</u>	<u>9683</u>
Jul:	44	64561	14365	78926	84457	5198
Aug:	44	68008	15199	83207	78504	9901
Sep:	44	68323	15201	83524	83892	9533
Oct:	44	70951	15830	86781	86783	9531
Nov:	44	71123	15924	87047	87926	8652
Dec:	44	73132	16489	89621	88414	9859
Jan:	44	73825	16589	90414	90912	9361
Feb:	44	73864	16624	90488	90166	9683

TABLE 17:EMPLOYMENT AND WAGES/SALARIES.

Year (July-June)/ Month	No. Of Reporting Mills	E M P L O Y M E N T (NOS)*			WAGES/SALARIES (000 Rs.)	
		Total	Production Workers	Office Staff	Total	Production Workers
2005-06	54	4592	2739	1853	20211	10533
2006-07	54	4308	2551	1757	20138	11068
2007-08	54	3917	2408	1509	19923	11167
2008-09	54	3406	2109	1297	23522	12589
2009-10	54	3449	2176	1273	30532	17526
2010-11	54	3675	2366	1309	34883	20727
2011-12	54	3703	2558	1145	35708	20873
2012-13	54	3798	2625	1173	40008	23277
2013-14	54	4072	2753	1319	50720	28667
2014-15	53	4009	2756	1253	55717	31302
2015-16	53	4122	2901	1221	64521	38408
2016-17	50	3933	2678	1255	62720	35328
2017-18	51	4105	2737	1368	65889	38083
2018-19	52	4111	2787	1324	69521	39564
2019-20	50	5001	3286	1715	77791	41351
2020-21	50	5111	3250	1861	91913	42105
(Jul: – Feb:)	<u>50</u>	<u>5083</u>	<u>3270</u>	<u>1813</u>	<u>90851</u>	<u>41169</u>
Jul:	50	5092	3274	1818	88447	39919
Aug:	50	5078	3269	1809	90587	40631
Sep:	50	5081	3273	1808	90028	40742
Oct:	50	5091	3281	1810	90097	40660
Nov:	50	5097	3287	1810	91899	41783
Dec:	50	5104	3288	1816	92227	42020
Jan:	50	5100	3285	1815	90925	41256
Feb:	50	5022	3203	1819	92597	42338
Mar:	50	5029	3219	1810	93082	42503
Apr:	50	5212	3242	1970	93593	44191
May:	50	5204	3189	2015	93526	44009
Jun:	50	5225	3190	2035	95952	45233
<u>2021-22</u>						
(Jul: – Feb:)	<u>44</u>	<u>5262</u>	<u>3258</u>	<u>2004</u>	<u>97849</u>	<u>47632</u>
Jul:	44	5121	3109	2012	93456	44544
Aug:	44	5195	3206	1989	96667	49786
Sep:	44	5204	3227	1977	97573	46748
Oct:	44	5274	3279	1995	97913	46855
Nov:	44	5286	3286	1997	98266	46906
Dec:	44	5329	3302	2027	99440	48213
Jan:	44	5339	3324	2015	99696	48380
Feb:	44	5351	3332	2019	99782	49627

* =Monthly averages over eight months.

PERFORMANCE OF BEVERAGES INDUSTRY

Report for the month of February 2022

Coverage

The report covers Thirty (30) Beverages factories of the Punjab.

Production

The factories produced 135719 thousand litres of Soft Drinks and 13224 thousand litres of Fruit Juices during February 2022. The production of Soft Drinks and Fruit Juices was 38.7% and 29.1% higher than the last month respectively.

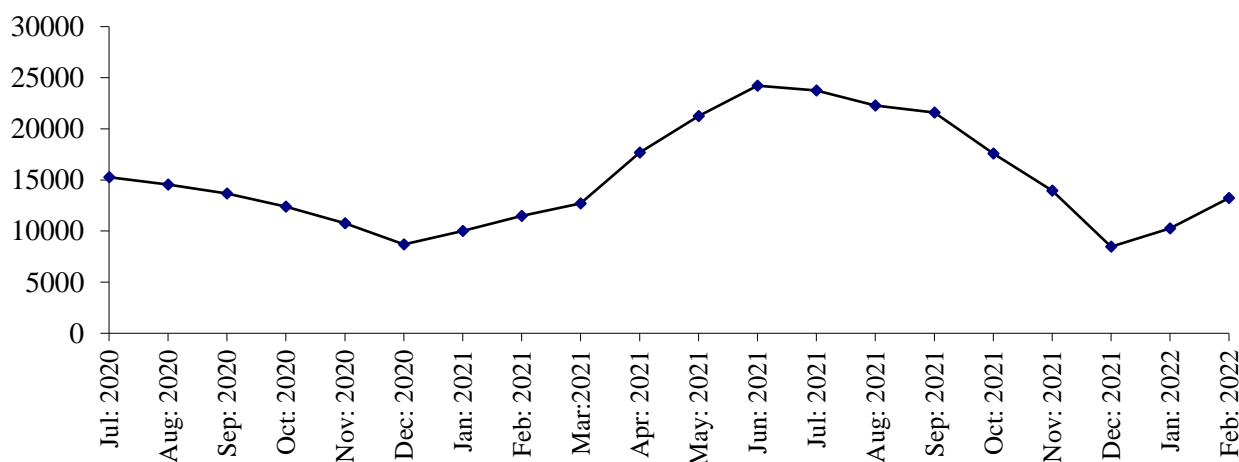
Employment

Total employment in these factories was 7925 which was 2.7% higher than the last month. Out of this total employment 3973 were production workers.

PRODUCTION OF FRUIT JUICES

July 2020 to February 2022

('000'Ltrs)



PRODUCTION OF SOFT DRINKS

July 2020 to February 2022

('000'Ltrs)

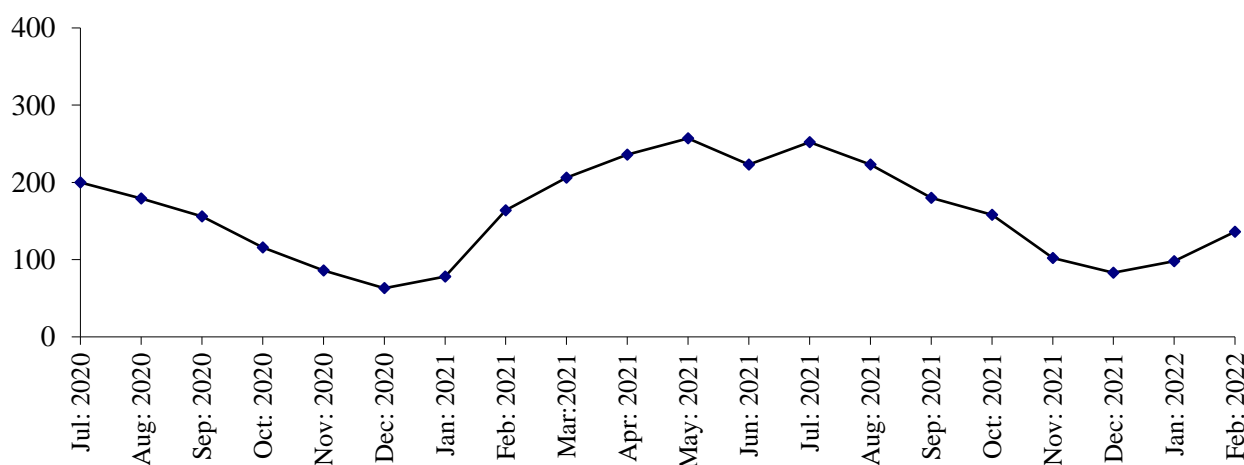


Table 18: MANUFACTURING ACTIVITY OF BEVERAGES INDUSTRY.

Year (July-June)/ Month	No. Of Reporting Units	PRODUCTION (in '000' Ltrs)		EMPLOYMENT (NOS.)*	
		Soft Drinks	Fruit Juices	Total	Production Workers
2005-06	39	773754	109283	5258	2173
2006-07	39	1144416	105395	5518	2536
2007-08	37	1367154	98692	6621	2733
2008-09	37	1445760	67932	6492	3037
2009-10	37	1041643	68020	6925	3323
2010-11	37	982963	92115	7577	3027
2011-12	37	1155234	116048	7948	3136
2012-13	37	1349580	120176	8224	3501
2013-14	37	1409663	127571	8125	3659
2014-15	34	1552102	156889	8328	4379
2015-16	30	1722698	139237	15461	8600
2016-17	29	1964432	154877	8549	3997
2017-18	30	1893694	177397	8981	4216
2018-19	31	1830166	219885	8529	4306
2019-20	31	1587814	183550	8173	4099
2020-21	31	1964275	172608	7988	4053
(Jul: – Feb:)	<u>31</u>	<u>1042574</u>	<u>96773</u>	<u>7840</u>	<u>3921</u>
Jul:	31	199909	15269	8026	4079
Aug:	31	178619	14553	7803	3911
Sep:	31	156308	13676	7904	3944
Oct:	31	116070	12387	7816	3879
Nov:	31	86050	10754	7717	3825
Dec:	31	62755	8685	7620	3737
Jan:	31	79084	9968	7656	3762
Feb:	31	163779	11481	8174	4230
Mar:	31	206277	12693	8290	4292
Apr:	31	235747	17671	8278	4307
May:	31	256778	21247	8250	4306
Jun:	31	222899	24224	8326	4365
<u>2021-22</u>					
(Jul: – Feb:)	<u>30</u>	<u>1231676</u>	<u>131108</u>	<u>8039</u>	<u>4091</u>
Jul:	30	252003	23753	8270	4342
Aug:	30	222993	22278	8338	4322
Sep:	30	180057	21597	8263	4274
Oct:	30	157763	17572	8074	4122
Nov:	30	102146	13969	7970	4039
Dec:	30	83127	8469	7756	3839
Jan:	30	97868	10246	7719	3814
Feb:	30	135719	13224	7925	3973

* =Monthly Average over the eight month.

PERFORMANCE OF SUGAR INDUSTRY

Report for the month of February 2022

Coverage

This report covers Forty four (44) Sugar Mills located in the Punjab Province.

Cane Crushing

Total cane crushed for the month of “February” 2022, was 10361198 Metric Tons. The has been started in February 2022.

Production

Total Sugar Produced during the month of “February” 2022, was 1212391 Metric Tons. The Production has been reported due to on season.

Sale and Stock of Sugar 2021-22

The sugar sold out from the previous stock as reported during the month of February 2022 was 407711 Metric Tons and the remaining stock of sugar is 2336134 Metric Tons.

Employment and Wages / Salaries

Total employment during the month of February 2022 was 37613. Out of this total employment, the number of production workers were 24047. The total wages/salaries during this month is amounted to 816 million rupees.

MONTHLY PRODUCTION OF SUGAR

Season 2020-21 VS 2021-22

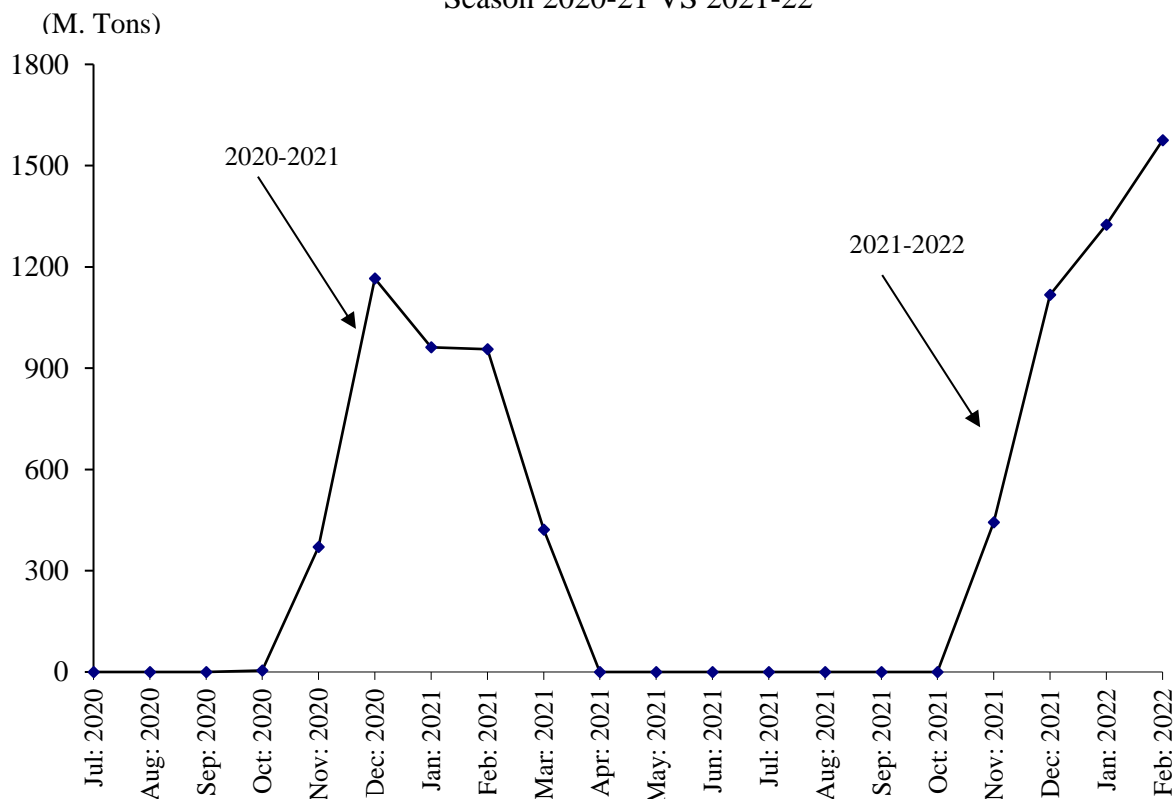


Table 19: MANUFACTURING ACTIVITY OF SUGAR INDUSTRY.

(Metric Tons)

Year	Months	No. Of Units Covered	Sugarcane Crushed	Opening Stock Of Sugar	Production Of Sugar	Sale Of Sugar	Closing Stock Of Sugar	Molasses
2005-06	Nov: 05- Apr: 06	41	19689376	-	1616019	-	-	1038240
2006-07	Nov: 06 – Apr: 07	41	27105733	-	2163263	-	-	1544850
2007-08	Nov: 07- May 08	41	29394739	-	2676345	-	-	1751935
2008-09	Nov:08-Apr:09	45	20388990	-	1926209	-	-	1280422
2009-10	Nov:09 –March10	46	22460655	-	1987285	-	-	887362
2010-11	Nov:10 –April 11	46	27026172	128193	2475907	2013178	590922	709876
2011-12	Oct: 11- Apr: 12	46	32310644	590922	3057611	2633244	1015289	750699
2012-13	Nov:12–May 13	46	35745878	1015289	3739171	4064180	690280	666328
2013-14	Nov:13–Apr: 14	46	30864941	690280	3075144	2013384	1752040	807507
2014-15	Nov:14–Apr: 15	46	31453631	1752040	3036312	2775995	2012357	66682
2015-16	Nov:15–Apr: 16	44	28922605	2012357	2666278	2951038	1727597	571184
2016-17	Nov: 16-Apr: 17	44	44143327	1727597	4314228	2754948	3286877	1522522
2017-18	Nov: 17-Apr: 18	45	53190310	3286877	5111165	6745070	1652972	1352698
2018-19	Dec: 18-Apr: 19	45	30835769	1652972	4868545	4278122	2243395	1361477
2019-20	Nov: 19-Mar:20	44	23839905	1973322	3102104	4054794	1020632	671189
2020-21	Nov: 20-Mar:21	44	50011167	1020632	3877150	3620582	1277200	1166132
<u>2021-22</u>	(Jul: – Feb:)	<u>44</u>	<u>33066696</u>	<u>1277200</u>	<u>4096807</u>	<u>3037873</u>	<u>2336134</u>	<u>1169178</u>
	Jul:	44	-	1277200	-	308072	969128	-
	Aug:	44	-	969128	-	317269	651859	-
	Sep:	44	-	651859	-	250022	401837	-
	Oct:	44	-	401837	-	354781	47056	-
	Nov:	44	4998520	47056	442586	207363	282279	121815
	Dec:	44	8580638	282279	1116642	578723	820198	310650
	Jan:	44	9126340	820198	1325188	613932	1531454	337695
	Feb:	44	10361198	1531454	1212391	407711	2336134	399018

TABLE 20: EMPLOYMENT AND WAGES / SALARIES

Year /Months	No. Of Units Covered	EMPLOYMENT (Nos.)			WAGES / SALARIES (000 Rs.)	
		Total	Production Workers	Office Staff	Total	Production Workers
2007-2008	<u>41</u>	<u>28047</u>	<u>17824</u>	<u>10223</u>	<u>155822</u>	<u>89252</u>
(Crushing Season)		31966	20512	11454	176659	103596
(Non-Crushing Season)		22559	14062	8497	126651	69170
2008-2009	<u>45</u>	<u>21716</u>	<u>13193</u>	<u>8524</u>	<u>164256</u>	<u>95503</u>
(Crushing Season)		<u>27532</u>	<u>17387</u>	<u>10145</u>	<u>193291</u>	<u>119674</u>
(Non-Crushing Season)		20262	12144	32473	156998	89461
2009-10	<u>46</u>	<u>24448</u>	<u>15250</u>	<u>9197</u>	<u>197290</u>	<u>116870</u>
(Crushing Season)		31580	20435	11145	247830	153135
(Non-Crushing Season)		19354	11547	7807	161190	90967
2010-11	<u>46</u>	<u>22967</u>	<u>14468</u>	<u>8499</u>	<u>209749</u>	<u>126526</u>
(Crushing Season)		27879	18340	9539	246395	154557
(Non-Crushing Season)		18055	10595	7459	173102	98495
2011-12	<u>46</u>	<u>23078</u>	<u>13932</u>	<u>9145</u>	<u>230146</u>	<u>132212</u>
(Crushing Season)		26017	10957	8007	204749	111423
(Non-Crushing Season)		18964	16058	9959	248287	147060
(2012-13)	<u>46</u>	<u>25311</u>	<u>16021</u>	<u>9848</u>	<u>276892</u>	<u>171611</u>
(Crushing Season)	46	28541	19094	10404	318296	203325
(Non-Crushing Season)	46	20788	11719	9069	127701	127212
(2013-14)	<u>46</u>	<u>25672</u>	<u>16563</u>	<u>9009</u>	<u>318239</u>	<u>196709</u>
(Crushing Season)	46	29968	19690	10278	366452	229798
(Non-Crushing Season)	46	21300	13907	7393	260446	162496
(2014-15)	<u>46</u>	<u>23845</u>	<u>15042</u>	<u>8804</u>	<u>337354</u>	<u>207609</u>
(Crushing Season)	46	27988	18137	9852	389645	244041
(Non-Crushing Season)	46	19703	11947	7755	285051	171178
(2015-16)	<u>44</u>	<u>22554</u>	<u>14023</u>	<u>8531</u>	<u>341965</u>	<u>205969</u>
(Crushing Season)	44	25752	16141	9611	388494	237002
(Non-Crushing Season)	44	19356	11738	7618	298435	174937
2016-17	<u>45</u>	<u>24469</u>	<u>14900</u>	<u>9569</u>	<u>404061</u>	<u>250817</u>
(Crushing Season)	45	30354	18632	11722	480241	305510
(Non-Crushing Season)	45	18583	11168	7415	327881	156664
2017-18	<u>45</u>	<u>26874</u>	<u>16910</u>	<u>9964</u>	<u>588807</u>	<u>325440</u>
(Crushing Season)	45	31429	20009	11419	706001	393686
(Non-Crushing Season)	45	22318	13810	8507	471613	257195
2018-19	<u>45</u>	<u>28234</u>	<u>18208</u>	<u>10226</u>	<u>720481</u>	<u>406815</u>
(Crushing Season)	45	32495	21556	10939	794668	459287
(Non-Crushing Season)	45	25190	15817	9373	667492	369336
2019-20	<u>45</u>	<u>19599</u>	<u>12795</u>	<u>6834</u>	<u>419356</u>	<u>265765</u>
(Crushing Season)	45	31689	21217	10472	722697	285965
(Non-Crushing Season)	45	22940	15223	9373	7717	507681
2020-21	<u>44</u>	<u>27571</u>	<u>17326</u>	<u>10245</u>	<u>616305</u>	<u>359633</u>
(Crushing Season)	44	33603	21507	12096	692380	424448
(Non-Crushing Season)	44	21538	13145	8393	540231	294819
2021-22						
(Jul: – Feb:)	<u>44</u>	<u>29405</u>	<u>18590</u>	<u>10815</u>	<u>694547</u>	<u>444308</u>
Jul:	44	19191	10948	8243	551772	344812
Aug:	44	21667	14365	7302	554306	352193
Sep:	44	21705	14401	7304	559356	357199
Oct:	44	27760	17250	10510	756815	427808
Nov:	44	33595	20750	12845	757922	468898
Dec:	44	35722	22826	12896	768808	513076
Jan:	44	37983	24135	13848	791763	541171
Feb:	44	37613	24047	13566	815633	549308

*= Monthly average over eight months/ crushing/Non crushing season.

PERFORMANCE OF CIGARETTES INDUSTRY

Report for the month of February 2022

Coverage

This report covers three (03) Cigarettes factories of the Punjab.

Production

The production of Cigarettes during the month was 1439 Million Nos. Which was 3.2% higher than January 2022.

Sale and Stock

Sale of Cigarettes during the month was 1693 Million Nos. Which was 2.8% higher than January 2022.

Employment

Total employment in these factories during the month was 678, which was same as the last month. Out of this total employment, 524 were production workers. Total wages/salaries for the month were amounted to Rs. 54.0 Millions.

PRODUCTION OF CIGARETTES

July 2020 to February 2022

(Millions Nos.)

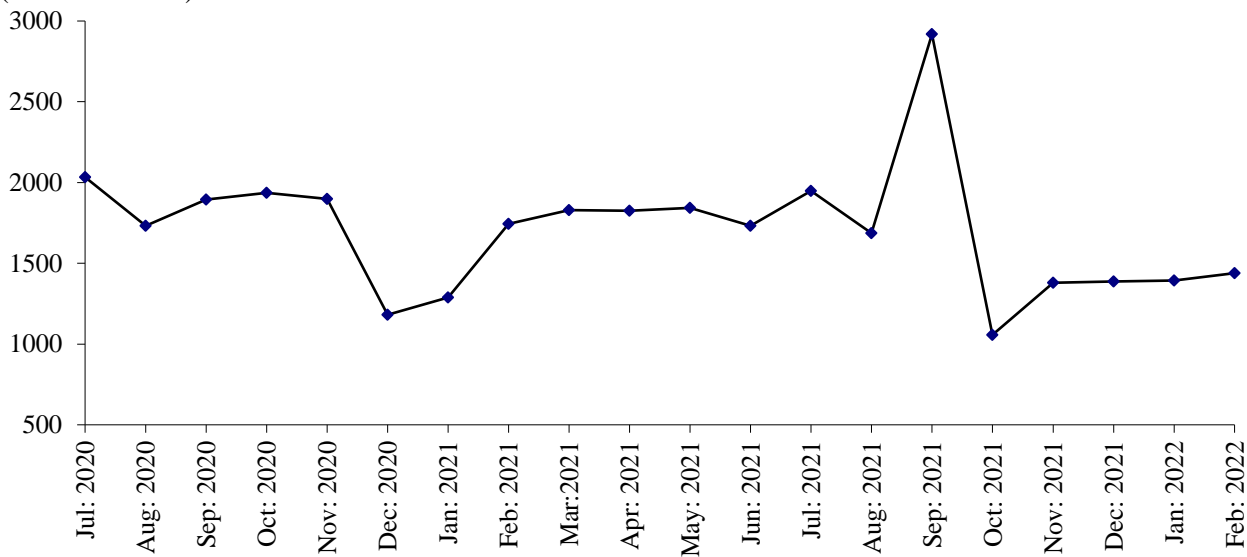


Table No.21

MANUFACTURING ACTIVITY OF CIGARETTES INDUSTRY.

Year (July-June)/ Month	No. Of Reporting Units	PRODUCTION, SALE & STOCK OF CIGARETTES (Million Nos.)			EMPLOYMENT* (Nos.)		WAGES/SALARIES (‘000’Rs.)	
		Production	Sale	Stock at the end	Total	Production Workers	Total	Production Workers
2005-06	3	31772.6	31455.7	1038.3	1484	1344	16137	14294
2006-07	3	29901.9	29642.1	1297.5	1398	1272	18278	14591
2007-08	3	34987.2	35762.5	510	1364	1238	22291	16829
2008-09	3	43058.0	42901.0	667	1307	1089	23946	18512
2009-10	3	37296.0	36987.0	976	1269	1136	26379	20638
2010-11	3	37944	37420	1500	1178	1051	28432	25294
2011-12	3	34955	35961	494	998	898	32942	29936
2012-13	3	37845	37996	343	907	811	27023	22214
2013-14	3	33094	24934	8503	904	797	27781	22032
2014-15	3	33966	38328	4141	905	793	32807	24413
2015-16	3	27502	29914	1729	808	707	33019	24855
2016-17	3	28452	274135	3046	603	509	33264	25008
2017-18	3	28324	30503	867	509	425	32139	23057
2018-19	3	35850	27486	9231	552	446	36978	21686
2019-20	3	25634	21861	13077	640	493	45641	20945
2020-21	3	21353	19306	15124	657	494	50439	21564
(Jul: – Feb:)	3	13709	12538	14248	659	497	49294	21428
Jul:	3	2033	1747	13363	655	501	49056	21725
Aug:	3	1732	1509	13586	654	501	48611	21480
Sep:	3	1895	1798	13683	662	502	49431	21567
Oct:	3	1936	1671	13948	664	502	49818	21483
Nov:	3	1898	1825	14021	664	502	48863	21590
Dec:	3	1182	1287	13916	664	503	50079	21801
Jan:	3	1289	1201	14004	654	484	49305	20849
Feb:	3	1744	1500	14248	654	484	49185	20932
Mar:	3	2014	1829	14433	654	486	49908	20841
Apr:	3	2053	1825	14661	655	486	53467	22049
May	3	1844	1919	14586	655	486	53254	22174
Jun:	3	1733	1195	15124	654	486	53287	22272
<u>2021-22</u>								
(Jul: – Feb:)	3	13709	12618	16215	666	503	53016	23818
Jul:	3	1948	1481	15591	656	484	49056	21725
Aug:	3	1686	1296	15981	656	484	53974	21576
Sep:	3	2918	2325	16574	658	485	52676	21758
Oct:	3	1057	1421	16210	659	485	52676	21758
Nov:	3	1380	1292	16298	673	520	53886	22158
Dec:	3	1887	1709	16476	673	520	53886	23828
Jan:	3	1394	1401	16469	676	523	53988	28872
Feb:	3	1439	1693	16215	678	524	53988	28872

* = Monthly Average over eight months.

PERFORMANCE OF CEMENT INDUSTRY

Report for the month of February 2022

Coverage

This report covers twelve (12) factories in the Punjab.

Production of Clinker

The cement factories produced 1457714 Metric Tons of Clinker during February 2022, which was 27.6% lower than the last month. The factories consumed 1887601 Metric Tons of Clinker to produce Cement.

Production of Cement

The cement factories produced 2057450 Metric Tons of Cement during the month, which was 8.6% higher than the last month.

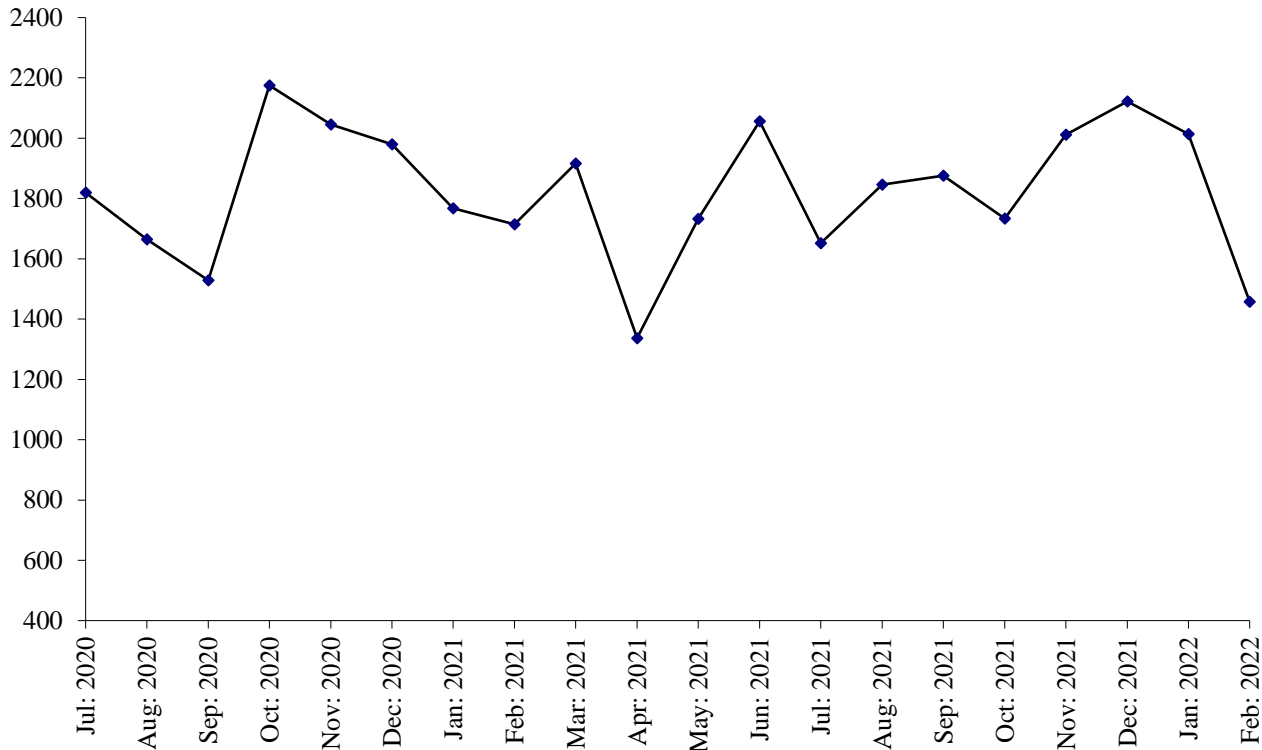
Employment

Total employment in the factories as reported was 8059 which was 0.1% lower than the last month. Out of this total employment, 5358 were production workers. Total wages/salaries for the month under report were 739.4 Million Rupees.

PRODUCTION OF CLINKER

July 2020 to February 2022

(000 M. Tons)



PRODUCTION OF CEMENT

July 2020 to February 2022

(000 M. Tons)

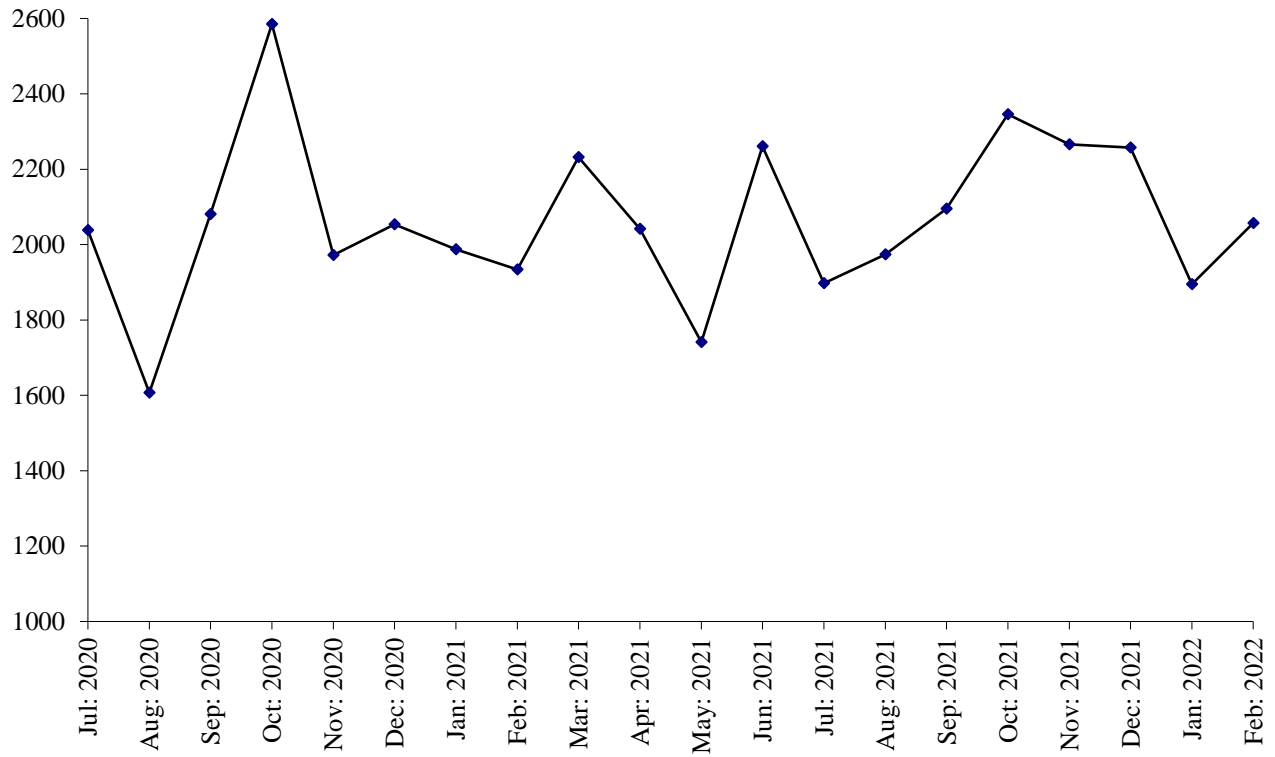


Table No.22 DETAIL OF PRODUCTION, CONSUMPTION AND STOCK OF CLINKER.*(M.Tons)*

Year (July-June)/ Month	No. Of reporting Units	Stock at the Beginning	Production	Consumption	Stock at the end
2005-06	11	147719	7638550	7413991	372278
2006-07	12	372278	8573452	8533162	412569
2007-08	13	412569	10403031	10417823	397777
2008-09	13	397777	14275929	13996684	677022
2009-10	13	677022	15438372	15593172	522222
2010-11	13	522222	14340746	13920004	942964
2011-12	13	942964	13937197	13851368	1028793
2012-13	12	1028793	15210981	14730923	1508851
2013-14	12	1508851	15780981	15535319	1754513
2014-15	12	1754513	15926314	15853807	1827020
2015-16	12	1827020	15973852	17140392	660480
2016-17	12	660480	19101688	18498074	1264094
2017-18	12	1264094	20080615	19767345	1577364
2018-19	12	1577364	18892935	18992061	1478238
2019-20	12	1478238	19838457	19197793	2118902
2020-21	12	2118902	21735282	21668097	2186087
(Jul: – Feb:)	<u>12</u>	<u>2118902</u>	<u>14694685</u>	<u>14567149</u>	<u>2246438</u>
Jul:	12	2118902	1818967	2019098	1918771
Aug:	12	1918771	1664293	1444285	2138779
Sep:	12	2138779	1529419	1933075	1735123
Oct:	12	1735123	2174745	2312941	1596927
Nov:	12	1596927	2046265	1716886	1926306
Dec:	12	1926306	1980225	1778200	2128331
Jan:	12	2128331	1767088	1691431	2203988
Feb:	12	2203988	1713683	1671233	2246438
Mar:	12	2246438	1915501	1961392	2200547
Apr:	12	2200547	1337325	1695742	1842130
May:	12	1842130	1732144	1529403	2044871
Jun:	12	2044871	2055627	1914411	2186087
<u>2021-22</u>					
(Jul: – Feb:)	<u>12</u>	<u>2186087</u>	<u>14712995</u>	<u>14832004</u>	<u>2067078</u>
Jul:	12	2186087	1652107	1531086	2307108
Aug:	12	2307108	1846363	1612070	2541401
Sep:	12	2541401	1876108	1753780	2663729
Oct:	12	2663729	1733236	2009680	2387285
Nov:	12	2387285	2011603	2197532	2201356
Dec:	12	2201356	2121533	2112822	2210067
Jan:	12	2210067	2014331	1727433	2496965
Feb:	12	2496965	1457714	1887601	2067078

Table No.23 DETAIL OF PRODUCTION, SALE AND STOCK OF CEMENT*(M.Tons)*

Year (July- June)/ Month	No. Of Reporting Units	Stock at the beginning	Production	S O L D			Stock at the end
				Total	Within country	Expor- ted	
2005-06	11	72358	7542243	7557589	7557589	-	57012
2006-07	12	57012	8882277	8793994	8793994	-	145295
2007-08	13	145295	10713689	10767713	10767713	-	91271
2008-09	13	91271	14227580	14068486	14068486	-	250365
2009-10	13	250365	16951531	16973086	16973086	-	228810
2010-11	13	228810	14685518	14528966	14528966	-	385362
2011-12	13	385362	15269328	15299852	15299852	-	354838
2012-13	12	354838	15929819	15922363	15922363	-	362294
2013-14	12	362294	16668915	16472689	16472689	-	558520
2014-15	12	558520	17175158	17358446	17358446	-	375232
2015-16	12	375232	18479957	18588721	18588721	-	266468
2016-17	12	266468	19569160	19445145	19445145	-	390483
2017-18	12	390483	22067871	22188484	22188484	-	269870
2018-19	12	269870	21077461	20903996	20903996	-	443335
2019-20	12	443335	20386575	20021979	20021979	-	807931
2020-21	12	807931	24535481	24360442	24360442	-	982970
(Jul: – Feb:)	<u>12</u>	<u>807931</u>	<u>16258532</u>	<u>16198296</u>	<u>16198296</u>	<u>=</u>	<u>868167</u>
Jul:	12	807931	2037917	2085991	2085991	-	759857
Aug:	12	759857	1606770	1629281	1629281	-	737346
Sep:	12	737346	2081073	2123516	2123516	-	694903
Oct:	12	694903	2584681	2526568	2526568	-	753016
Nov:	12	753016	1972117	1927238	1927238	-	797895
Dec:	12	797895	2054361	2036031	2036031	-	816225
Jan:	12	816225	1987162	1944314	1944314	-	859073
Feb:	12	859073	1934451	1925357	1925357	-	868167
Mar:	12	868167	2232412	2181609	2181609	-	918970
Apr:	12	918970	2042476	2030705	2030705	-	930741
May:	12	930741	1741095	1719607	1719607	-	952229
Jun:	12	952229	2260966	2230225	2230225	-	982970
<u>2021-22</u>							
(Jul: – Feb:)	<u>12</u>	<u>982970</u>	<u>16786605</u>	<u>16461213</u>	<u>16461213</u>	<u>=</u>	<u>1308362</u>
Jul:	12	982970	1896820	1759516	1759516	-	1120274
Aug:	12	1120274	1974246	1929710	1929710	-	1164810
Sep:	12	1164810	2094744	2089161	2089161	-	1170393
Oct:	12	1170393	2346177	2283767	2283767	-	1232803
Nov:	12	1232803	2265548	2235177	2235177	-	1263174
Dec:	12	1263174	2256806	2247223	2247223	-	1272757
Jan:	12	1272757	1894814	1839850	1839850	-	1327721
Feb:	12	1327721	2057450	2076809	2076809	-	1308362

Table No.24 EMPLOYMENT AND WAGES/SALARIES OF CEMENT INDUSTRY

Year (July-June)/ Month	No. Of Reporting Units	EMPLOYMENT (No)*			WAGES/SALARIES (000 Rs.)	
		Total	Production Workers	Non-Production Workers	Total	Production Workers
2005-06	11	4696	2714	1982	54068	25731
2006-07	12	4950	2839	2111	62364	28354
2007-08	13	5429	3200	2229	113212	54248
2008-09	13	5858	3906	1952	137089	755759
2009-10	13	6272	4292	1980	157409	80564
2010-11	13	6713	4631	2082	177979	94502
2011-12	13	6614	4729	1885	195861	115717
2012-13	12	6463	4591	1872	226498	135792
2013-14	12	6593	4648	1945	241852	140576
2014-15	12	6767	4817	1950	301847	178187
2015-16	12	7046	5009	2037	384190	222124
2016-17	12	7627	5178	2448	521509	292515
2017-18	12	8033	5262	2771	729712	399586
2018-19	12	8077	5360	2717	668155	384602
2019-20	12	7988	5400	2588	634682	387052
2020-21	12	7912	5328	2583	661961	405863
(Jul: – Feb:)	<u>12</u>	<u>7795</u>	<u>5201</u>	<u>2594</u>	<u>644246</u>	<u>389426</u>
Jul:	12	7829	5205	2624	623496	372863
Aug:	12	7782	5174	2608	620150	370204
Sep:	12	7723	5122	2601	612169	361786
Oct:	12	7586	5003	2583	606669	357614
Nov:	12	7553	4988	2565	615225	363464
Dec:	12	7565	4980	2585	614694	362224
Jan:	12	8160	5567	2593	767705	488749
Feb:	12	8160	5570	2590	693862	438504
Mar:	12	8121	5565	2556	697614	439694
Apr:	12	8092	5546	2546	695989	437851
May:	12	8162	5597	2565	697151	438377
Jun:	12	8207	5624	2583	698807	439027
<u>2021-22</u>						
(Jul: – Feb:)	<u>12</u>	<u>8132</u>	<u>5515</u>	<u>2617</u>	<u>742117</u>	<u>463522</u>
Jul:	12	8210	5620	2590	707723	445546
Aug:	12	8170	5593	2577	744994	468152
Sep:	12	8117	5568	2549	740878	466123
Oct:	12	8115	5567	2548	749369	473170
Nov:	12	8101	5561	2540	750353	472517
Dec:	12	8218	5499	2719	763646	471320
Jan:	12	8065	5357	2708	740527	456321
Feb:	12	8059	5358	2701	739443	455027

* = Monthly average over eight months.

PERFORMANCE OF FERTILIZER INDUSTRY

Report for the month of February 2022

Coverage

This report covers Seven (07) fertilizer factories in the Punjab Province.

Production

These factories produced 277309 Metric Tons of Urea, 1808 Metric Tons of Super Phosphate, 69549 Metric Tons of Amm. Nitrate and 67126 Metric Tons of Nitro Phosphate. The overall production of Fertilizer during the month was 6.1% lower than the last month.

Sale and Stock

These fertilizer factories reported a sale of 285466 Metric Tons of Urea, 1133 Metric Tons of Super phosphate, 68599 Metric Tons of Amm. Nitrate and 66468 Metric Tons of Nitro Phosphate. The stock of Urea, Super Phosphate, Amm. Nitre and Nitro Phosphate at the end of the month was 8495, 701, 1357 and 15575 Metric Tons respectively.

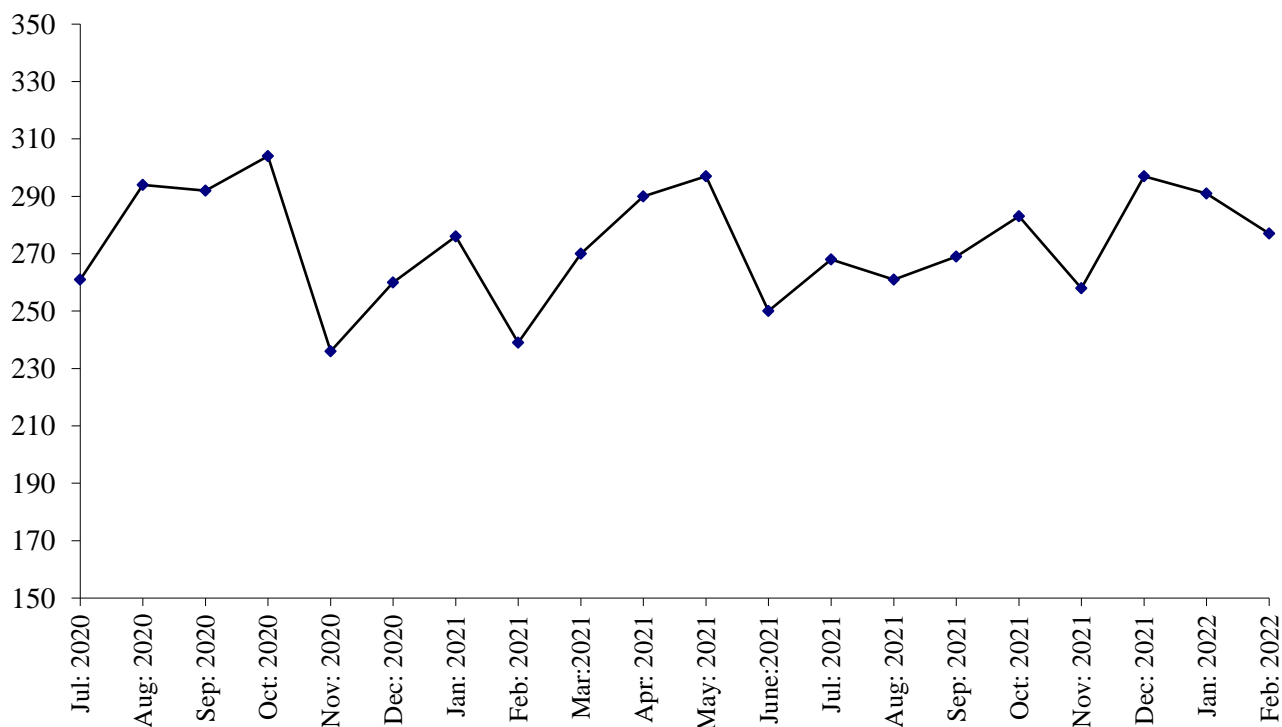
Employment and Wages/Salaries

Total employment during the month was 5562 which is 0.04% lower than the last month. Out of this total employment 3633 were production workers. Total Wages/Salaries for the month under report were amounted to 643.3 Million Rupees.

PRODUCTION OF UREA

July 2020 to February 2022

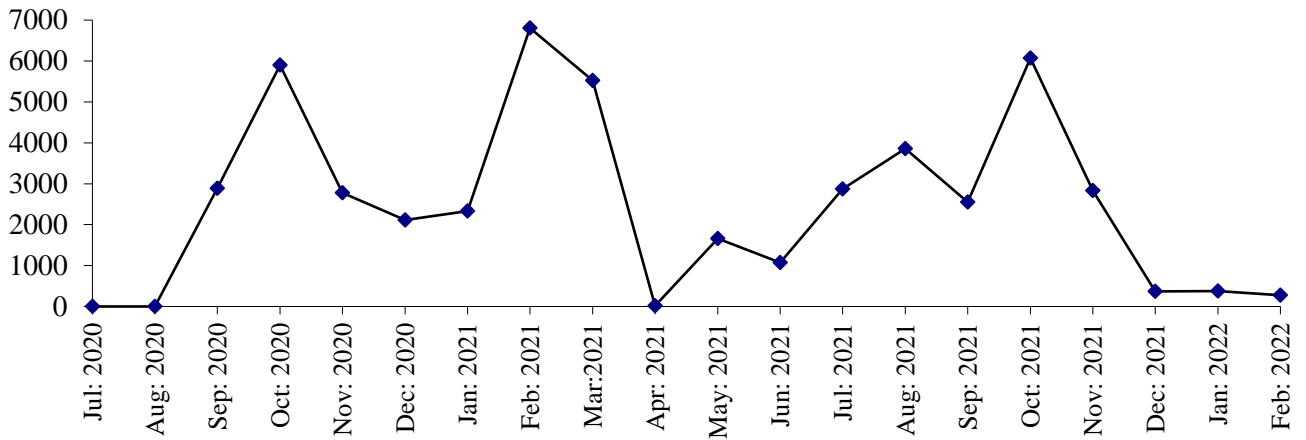
(000 M. Tons)



PRODUCTION OF SUPER PHOSPHATE

(000 M. Tons)

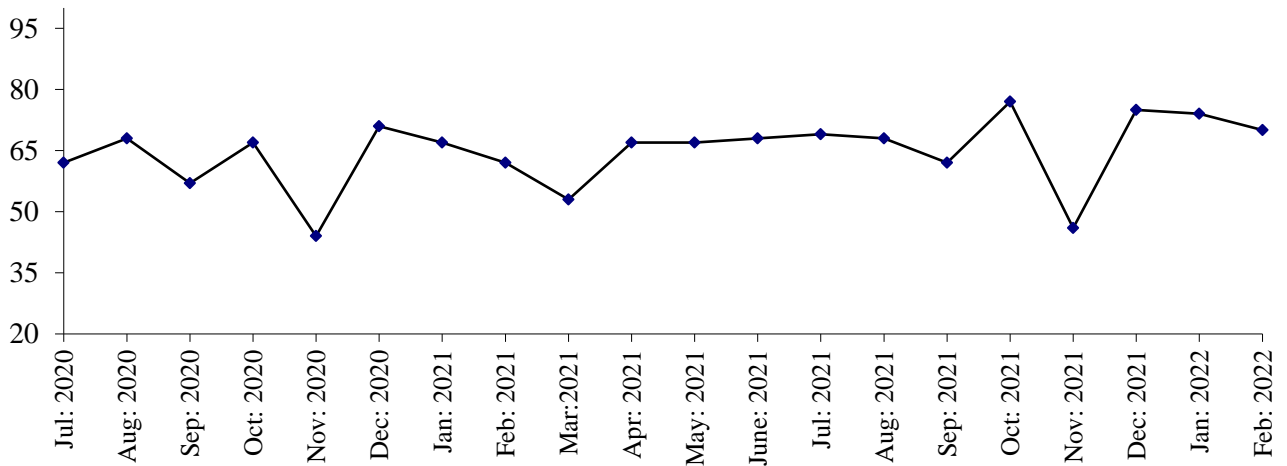
July 2020 to February 2022



PRODUCTION OF AMM. NITRATE

(000 M. Tons)

July 2020 to February 2022



PRODUCTION OF NITRO PHOSPHATE

(000 M. Tons)

July 2020 to February 2022

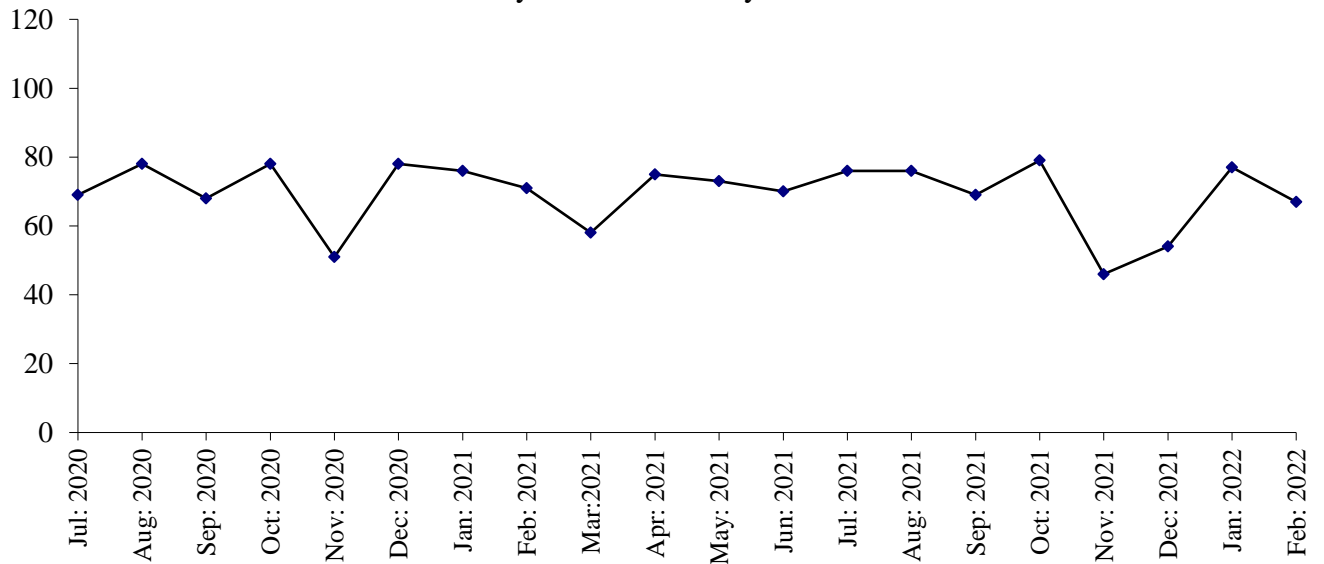


Table No: 25 DETAIL OF PRODUCTION, SALE AND STOCK OF UREA AND AMM. SULPHATE

(M. Tons)

Year (July-June)/ Month	U R E A			AMM. SULPHATE		
	Production	Sale	Stock at The end	Production	Sale	Stock at the end
2005-06	3285254	3236500	78393	-	-	-
2006-07	3267943	3024493	321843	-	-	-
2007-08	3274090	3553613	42320	-	-	-
2008-09	3377275	3404025	15570	-	-	-
2009-10	3431545	3374056	73059	-	-	-
2010-11	3016783	3064387	25455	-	-	-
2011-12	2750392	2701061	74786	-	-	-
2012-13	2592718	2639313	28191	-	-	-
2013-14	2582330	2539991	70530	-	-	-
2014-15	2459980	2505550	24960	-	-	-
2015-16	2856143	2392405	488698	-	-	-
2016-17	2808518	2895909	401307	-	-	-
2017-18	2987690	3367935	21062	-	-	-
2018-19	3181203	3133449	68816	-	-	-
2019-20	3201765	3251695	18886	-	-	-
2020-21	3268768	3132828	154826	-	-	-
(Jul: – Feb:)	<u>2162074</u>	<u>2164334</u>	<u>16626</u>	±	±	±
Jul:	261296	157956	122226	-	-	-
Aug:	293873	352248	63851	-	-	-
Sep:	291829	237199	118481	-	-	-
Oct:	304423	223739	199165	-	-	-
Nov:	235934	257957	177142	-	-	-
Dec:	259776	430626	6292	-	-	-
Jan:	276193	275375	7110	-	-	-
Feb:	238750	229234	16626	-	-	-
Mar:	269652	217490	68788	-	-	-
Apr:	289766	183473	175081	-	-	-
May	297445	243622	228904	-	-	-
Jun:	249831	323909	154826	-	-	-
<u>2021-22</u>						
(Jul: – Feb:)	<u>2204445</u>	<u>2350776</u>	<u>8495</u>	±	±	±
Jul:	267660	302833	119653	-	-	-
Aug:	260817	331466	49004	-	-	-
Sep:	268983	262644	55343	-	-	-
Oct:	283418	86286	252475	-	-	-
Nov:	258361	447787	63049	-	-	-
Dec:	296917	326311	33655	-	-	-
Jan:	290980	307983	16652	-	-	-
Feb:	277309	285466	8495	-	-	-

Table No:26 DETAIL OF PRODUCTION, SALE AND STOCK OF SUPER PHOSPHATE AND AMM. NITRATE
(M. Tons)

Year (July-June)/ Month	SUPER PHOSPHATE			AMM. NITRATE		
	Production	Sale	Stock at The end	Production	Sale	Stock at the end
2005-06	72768	72424	4138	327918	313981	13937
2006-07	67236	63270	8104	330756	338854	5839
2007-08	83146	78492	12758	343728	349559	8
2008-09	89171	75025	26904	344334	339921	4421
2009-10	46952	56524	17332	345735	330963	19193
2010-11	126909	137940	6301	298029	307696	9526
2011-12	123294	90442	39153	228664	227808	10382
2012- 13	44638	42997	40794	26574	36898	58
2013-14	10081	29493	21382	119631	119539	150
2014-15	18706	25502	14586	113541	65804	47887
2015-16	28023	33404	9205	237844	169639	116092
2016-17	23815	9546	23474	226183	328008	14267
2017-18	1027	23807	694	553091	532829	34529
2018-19	18244	18828	110	456249	487629	3149
2019-20	9034	9122	22	548571	544771	6949
2020-21	31087	28244	2865	756461	762169	1241
(Jul: – Feb:)	<u>22819</u>	<u>19319</u>	<u>3522</u>	<u>498410</u>	<u>496079</u>	<u>9280</u>
Jul:	-	-	22	61702	64496	4155
Aug:	-	-	22	67858	69982	2031
Sep:	2890	2875	37	57041	57958	1114
Oct:	5900	3666	2271	66950	63496	4568
Nov:	2775	2773	2273	43735	33321	14982
Dec:	2116	462	3927	71373	75600	10755
Jan:	2333	4327	1933	67356	68721	9390
Feb:	6805	5216	3522	62395	62505	9280
Mar:	5522	2238	6806	56501	64071	1710
Apr:	15	1641	5180	67387	67907	1190
May	1658	3031	3807	66656	66587	1259
Jun:	1073	2015	2865	67507	67525	1241
<u>2021-22</u>						
(Jul: – Feb:)	<u>20735</u>	<u>22899</u>	<u>701</u>	<u>540450</u>	<u>540334</u>	<u>1357</u>
Jul:	2870	2376	3357	68776	67488	2529
Aug:	3860	1725	5492	67741	69099	1171
Sep:	2552	2406	5638	62255	61957	1469
Oct:	6067	10225	1480	77119	75720	2868
Nov:	2829	4231	78	45922	46639	2151
Dec:	369	421	26	75248	76887	512
Jan:	380	380	26	73840	73945	407
Feb:	1808	1133	701	69549	68599	1357

Table No: 27 DETAIL OF PRODUCTION, SALE AND STOCK OF NITRO PHOSPHATE.

(M.Tons)

Year (July-June)/ Month	Production	Sale	Stock at the end
2005-06	356601	324752	31849
2006-07	325826	357595	80
2007-08	329655	267704	62031
2008-09	305678	362938	4771
2009-10	304444	286441	22774
2010-11	265490	287894	370
2011-12	198799	198818	351
2012- 13	22109	22460	0
2013-14	122494	122478	16
2014-15	101171	93467	7720
2015-16	221059	228779	0
2016-17	274512	269570	4942
2017-18	455002	459944	0
2018-19	449667	449667	0
2019-20	624396	615632	8764
2020-21	845493	846511	7746
(Jul: – Feb:)	<u>569084</u>	<u>564807</u>	<u>13041</u>
Jul:	68978	76382	1360
Aug:	77544	78794	110
Sep:	68125	64521	3714
Oct:	77806	77000	4520
Nov:	50936	37392	18064
Dec:	78073	75688	20449
Jan:	76198	80184	16463
Feb:	71424	74846	13041
Mar:	58490	71531	0
April:	75457	67235	8222
May:	72504	69583	11143
June:	69958	73355	7746
<u>2021-22</u>			
(Jul: – Feb:)	<u>544338</u>	<u>536509</u>	<u>15575</u>
Jul:	76427	77902	6271
Aug:	76358	79618	3011
Sep:	68591	71456	146
Oct:	78859	78514	491
Nov:	45976	46117	350
Dec:	53587	53823	114
Jan:	77414	62611	14917
Feb:	67126	66468	15575

Table No: 28 EMPLOYMENT AND WAGES/SALARIES OF FERTILIZER INDUSTRY*

Year (July-June) / Month	No. Of Working Units	E M P L O Y M E N T (Nos.)*			WAGES/SALARIES (000 Rs.)	
		Total	Production Workers	Office Staff	Total	Production Workers
2005-06	6	4887	3371	1516	136663	86498
2006-07	6	4594	3221	1373	148034	93870
2007-08	6	4587	3277	1310	175821	113661
2008-09	5	4710	3316	1394	209439	132521
2009-10	5	4878	3388	1490	273098	166113
2010-11	6	5161	3496	1665	310502	181462
2011-12	6	5407	3671	1736	353344	207054
2012-13	6	5136	3469	1667	363237	210167
2013-14	6	4720	3121	1599	395486	224472
2014-15	6	5090	3015	2075	433858	222449
2015-16	6	5473	3070	2403	489752	235912
2016-17	6	5260	3045	2215	494139	260682
2017-18	7	6020	3616	2404	545307	287497
2018-19	7	6141	3663	2478	573893	295543
2019-20	7	5714	3443	2270	600079	321309
2020-21	7	5700	3590	2110	638195	355515
(Jul: – Feb:)	<u>7</u>	<u>5757</u>	<u>3563</u>	<u>2194</u>	<u>623284</u>	<u>343733</u>
Jul:	7	5781	3516	2265	631361	345166
Aug:	7	5793	3541	2252	617738	334610
Sep:	7	5781	3547	2234	626766	342481
Oct:	7	5865	3605	2260	620387	338153
Nov:	7	5901	3621	2280	627528	341816
Dec:	7	5800	3552	2248	654511	369345
Jan:	7	5544	3532	2012	608163	342176
Feb:	7	5589	3591	1998	599815	336119
Mar:	7	5561	3585	1976	667849	372873
Apr:	7	5603	3606	1997	673323	377411
May	7	5596	3604	1992	679751	388995
Jun:	7	5586	3776	1810	651153	377034
<u>2021-22</u>						
(Jul: – Feb:)	<u>7</u>	<u>5556</u>	<u>3628</u>	<u>1928</u>	<u>656411</u>	<u>372710</u>
Jul:	7	5481	3550	1931	725259	396900
Aug:	7	5520	3577	1943	678224	387504
Sep:	7	5529	3593	1936	647039	367985
Oct:	7	5558	3628	1930	633817	360129
Nov:	7	5630	3701	1929	642225	369056
Dec:	7	5603	3683	1920	632104	360027
Jan:	7	5564	3658	1906	649302	374987
Feb:	7	5562	3633	1929	643316	365090

* = Monthly averages over the eight months.

PERFORMANCE OF FOOTWEAR INDUSTRY

Report for the month of February 2022

Coverage

This report covers forty one factories of Footwear Industry in the Punjab Province.

Production

The factories produced 2545 thousand Pairs of Footwear during the current month, which was 0.3% higher than the previous month.

Employment

Total employment in these factories during the current month was 12092, 0.1% higher than the previous month. Out of this total employment, 9209 were production workers.

PRODUCTIN OF FOOTWEAR

July 2020 to February 2022

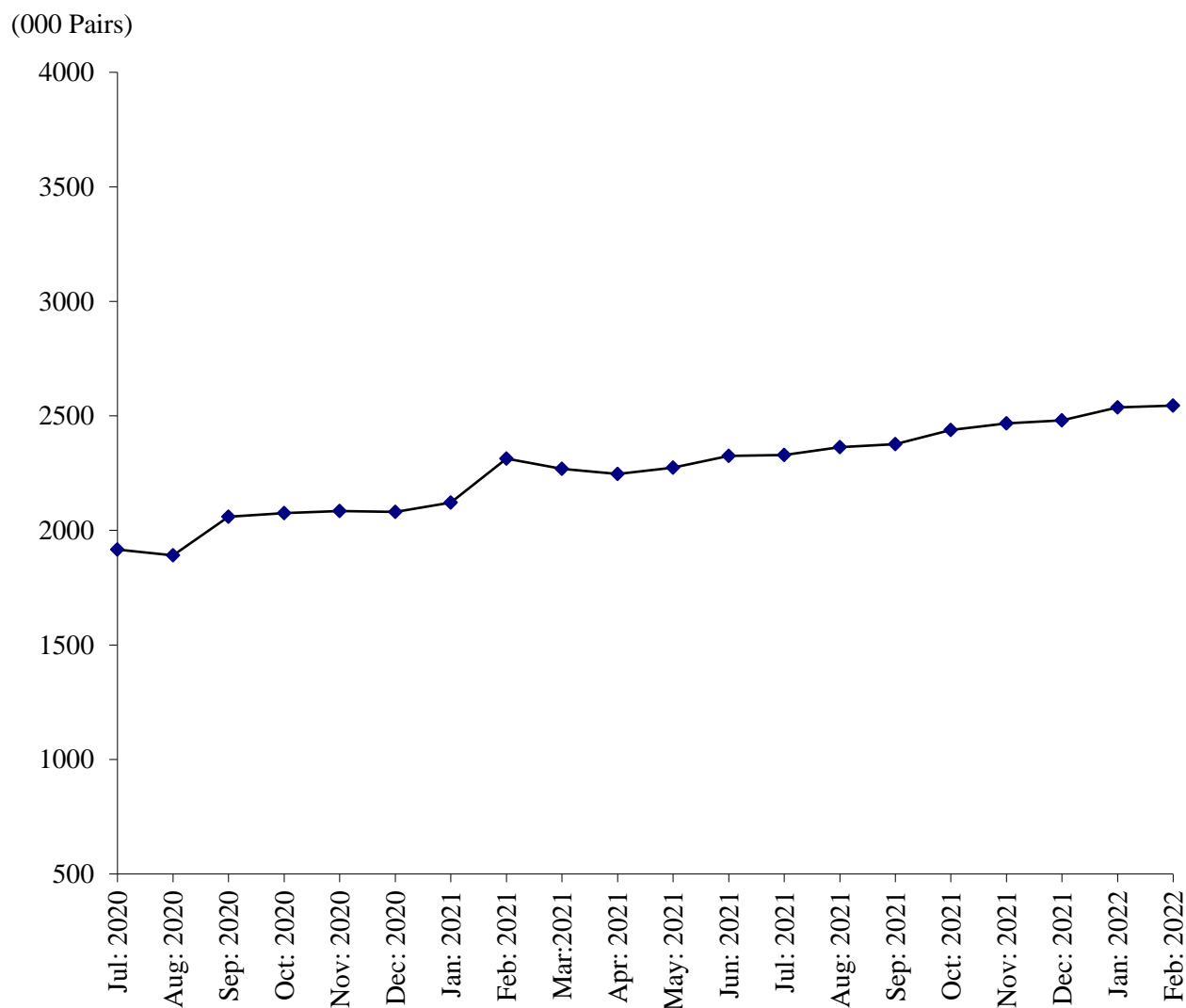


Table No.29 MANUFACTURING ACTIVITY OF FOOTWEAR INDUSTRY

Year (July-June)/ Month	No. Of Reporting Units	Production Of Footwear (000) Pairs)	EMPLOYMENT (NOS.) *	
			Total	Production Workers
2005-06	13	21521	8438	7123
2006-07	16	24628	8948	7507
2007-08	16	26865	8592	6928
2008-09	16	30979	8521	7038
2009-10	16	34817	8667	7152
2010-11	40	41008	9699	8116
2011-12	40	41944	9719	8535
2012-13	40	43232	9997	8536
2013-14	40	45030	9967	7937
2014-15	40	55136	9523	7398
2015-16	40	60462	10350	7959
2016-17	41	45476	9778	7401
2017-18	41	37411	9758	7477
2018-19	41	38805	9844	7783
2019-20	41	37860	10346	8451
2020-21	41	25658	10158	7745
(Jul: – Feb:)	<u>41</u>	<u>16544</u>	<u>9836</u>	<u>7525</u>
Jul:	41	1917	9166	6840
Aug:	41	1891	9264	6908
Sep:	41	2060	9922	7448
Oct:	41	2076	9928	7751
Nov:	41	2085	9961	7762
Dec:	41	2081	9961	7762
Jan:	41	2121	9853	7658
Feb:	41	2313	10633	8067
Mar:	41	2269	10403	7819
Apr:	41	2246	10395	7810
May	41	2274	11097	8468
June	41	2325	11308	8648
<u>2021-22</u>				
(Jul: – Feb:)	<u>41</u>	<u>19536</u>	<u>11821</u>	<u>9075</u>
July	41	2329	11398	8737
Aug:	41	2363	11624	8935
Sep:	41	2376	11642	8948
Oct:	41	2439	11891	9178
Nov:	41	2467	11907	9192
Dec:	41	2480	11925	9195
Jan:	41	2537	12085	9206
Feb:	41	2545	12092	9209

* = Monthly Average over eight months.

PERFORMANCE OF LEATHER TANNING INDUSTRY

Report for the month of February 2022

Coverage

The report for the month covers one Hundred and Six (106) Tanneries working in the Punjab Province.

Production

These Tanneries produced 692 thousand Sq. Mtrs. of Upper Leather and 14 M. Tons of Sole Leather during the current month. The Production of Upper Leather during the month was 2.1% higher than the previous month.

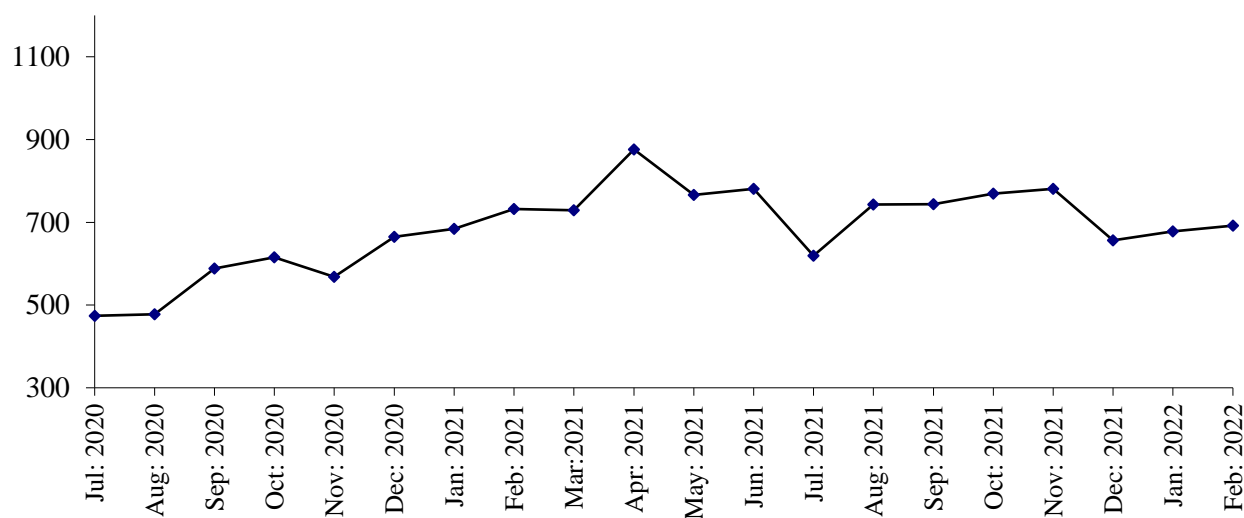
Employment

Total employment in these factories was 2194 persons that was 2.6% higher than the last month. Out of this total employment 1489 persons were production workers.

(000 Sq. Mtrs)

PRODUCTION OF UPPER LEATHER

July 2020 to February 2022



(000 M. Tons)

PRODUCTION OF SOLE LEATHER

July 2020 to February 2022

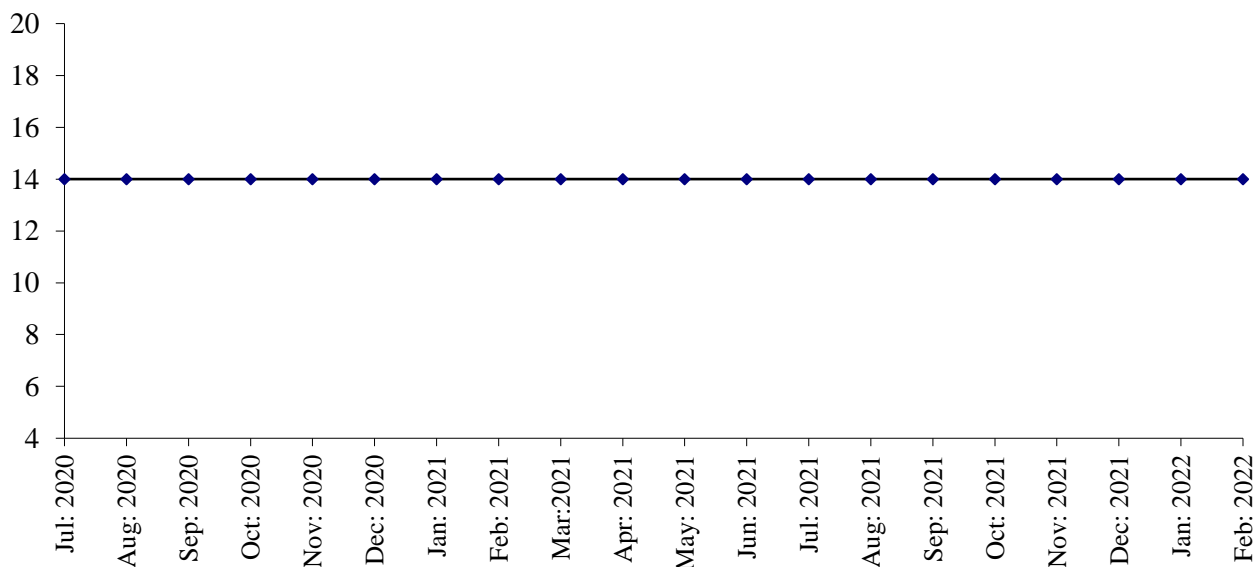


Table No: 30: MANUFACTURING ACTIVITY OF LEATHER TANNING INDUSTRY

Year (July-June) / Month	No. Of Reporting Units	P R O D U C T I O N		EMPLOYMENT (NOS.) *	
		Upper Leather (000 Sq. Mtrs)	Sole Leather (M. Tons)	Total	Production Workers
2005-06	17	4672	126	1249	897
2006-07	19	5078	126	1296	950
2007-08	19	5833	99	1294	919
2008-09	19	5980	156	1195	910
2009-10	60	10465	215	1711	1325
2010-11	100	12999	381	2234	1813
2011-12	100	11154	417	2133	1709
2012-13	100	10169	356	1824	1318
2013-14	100	10766	287	2404	1703
2014-15	100	10071	241	2539	1821
2015-16	100	9563	198	2550	1935
2016-17	106	10330	156	2956	2174
2017-18	107	11150	168	3071	2248
2018-19	107	11045	168	2938	2135
2019-20	108	9340	168	2787	2006
2020-21	108	7956	168	2467	1755
(Jul: – Feb:)	<u>108</u>	<u>4804</u>	<u>112</u>	<u>2514</u>	<u>1815</u>
Jul:	108	474	14	2621	1904
Aug:	108	478	14	2493	1893
Sept:	108	588	14	2617	2002
Oct:	108	615	14	2553	1946
Nov:	108	568	14	2488	1838
Dec:	108	665	14	2463	1656
Jan:	108	684	14	2434	1637
Feb:	108	732	14	2439	1643
Mar:	108	729	14	2399	1608
Apr:	108	876	14	2354	1571
May	108	766	14	2343	1667
Jun:	108	781	14	2400	1700
<u>2021-22</u>					
(Jul: – Feb:)	<u>106</u>	<u>5682</u>	<u>112</u>	<u>2320</u>	<u>1620</u>
Jul:	106	619	14	2489	1778
Aug:	106	743	14	2409	1725
Sep:	106	744	14	2417	1705
Oct:	106	769	14	2383	1694
Nov:	106	781	14	2398	1701
Dec:	106	656	14	2129	1428
Jan:	106	678	14	2138	1441
Feb:	106	692	14	2194	1489

* = Monthly average over the eight month.

PERFORMANCE OF PAPER & PAPER BOARD INDUSTRY

Report for the month of February 2022

Coverage

This report covers forty seven (47) factories of Paper & Paper Board Industries in the Punjab Province.

Production

Forty seven factories produced 16240 Metric Tons of paper, which comprises of 8235 Metric Tons of writing, 3451 Metric Tons of printing and 4554 Metric Tons of packing and other 39653 Metric Tons of paper board during the month. The production of paper and paper board was 3.5% and 14.6% lower than the last month respectively.

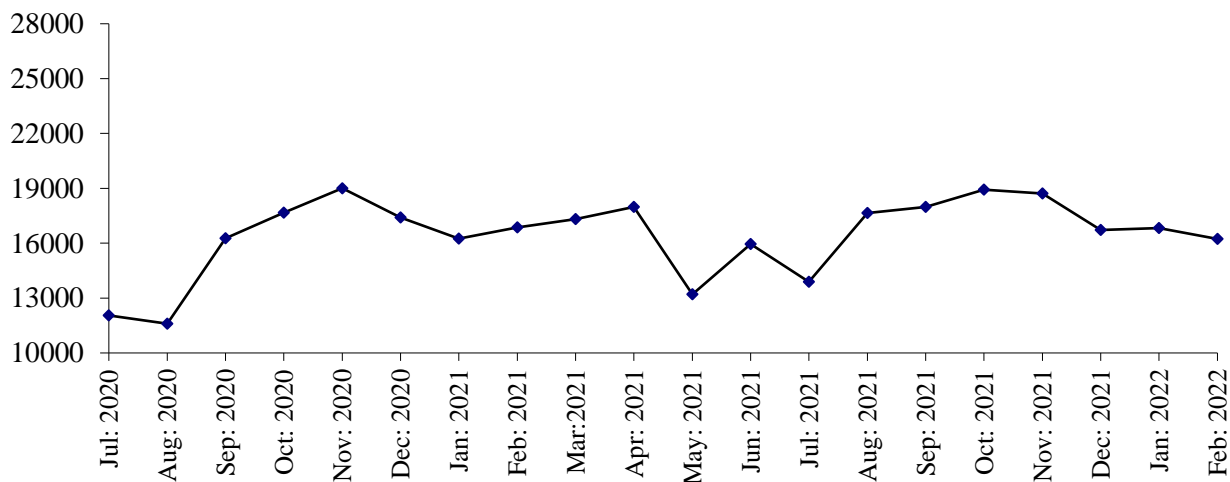
Employment

Total employment during the month was 5025 persons, which was same as the last month. Out of this total employment, 3600 were production workers.

PRODUCTION OF PAPER & PAPER BOARD

July 2020 to February 2022

(M. Tons)



(M. Tons)

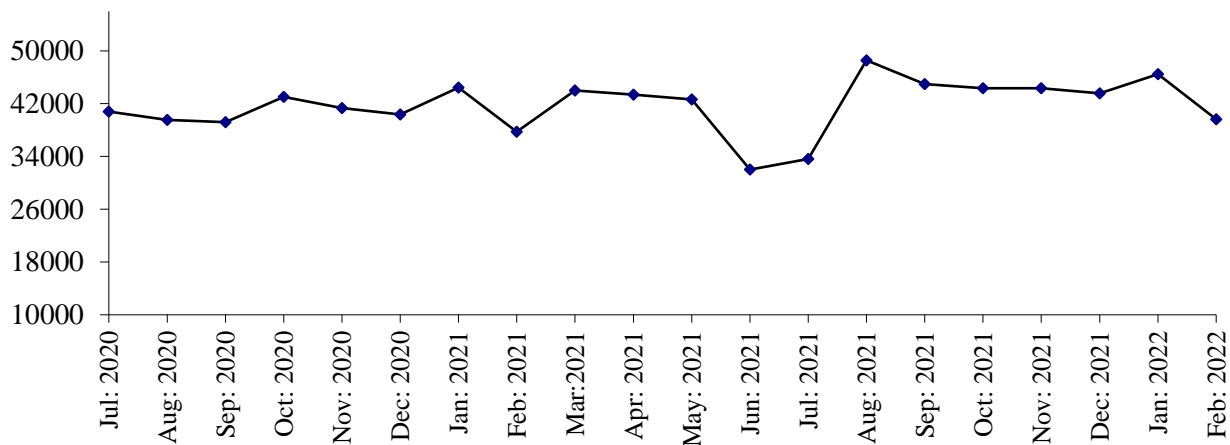


Table No: 31 MANUFACTURING ACTIVITY OF PAPER & PAPER BOARD INDUSTRY.

Year (July-June)/ Month	No. Of Reporting Units	P R O D U C T I O N (M.Tons)			EMPLOYMENT (NOS.) *	
		Paper	Paper Board	Paper & Paper Board	Total	Production Workers
2005-06	34	156010	281199	437209	5182	4151
2006-07	34	149972	276010	425982	4975	3983
2007-08	34	180162	223883	404045	5532	4218
2008-09	34	244838	165797	410635	5835	4845
2009-10	41	240775	165269	406044	5398	4178
2010-11	41	220587	194084	414671	5787	3945
2011-12	41	236217	287645	523862	5403	3539
2012-13	43	218980	376138	595118	5702	3774
2013-14	43	205252	457794	663046	6031	4053
2014-15	46	190193	407658	597851	6086	4370
2015-16	50	219040	370427	589467	6169	4629
2016-17	49	226251	398950	625201	6065	4614
2017-18	48	237723	451717	689440	6130	4570
2018-19	47	225544	429716	655260	5567	4052
2019-20	47	220495	441640	662135	5112	3683
2020-21	47	191962	488542	680504	5101	3660
(Jul: – Feb:)	<u>47</u>	<u>127510</u>	<u>326495</u>	<u>454005</u>	<u>5050</u>	<u>3614</u>
Jul:	47	12049	40809	52858	4358	2978
Aug:	47	11600	39530	51130	4987	3560
Sep:	47	16262	39198	55460	5036	3611
Oct:	47	17667	43044	60711	5033	3607
Nov:	47	19007	41362	60369	5133	3682
Dec:	47	17413	40349	57762	5317	3849
Jan:	47	16649	44449	61098	5259	3804
Feb:	47	16863	37754	54617	5273	3821
Mar:	47	17323	44023	61346	5262	3813
Apr:	47	17982	43389	61371	5191	3738
May	47	13200	42625	55825	5174	3722
Jun:	47	15947	32010	47957	5191	3740
<u>2021-22</u>						
(Jul: – Feb:)	<u>47</u>	<u>136948</u>	<u>345516</u>	<u>482464</u>	<u>5029</u>	<u>3605</u>
Jul:	47	13887	33616	47503	5026	3605
Aug:	47	17645	48583	66228	5028	3603
Sep:	47	17979	44978	62957	5024	3598
Oct:	47	18930	44353	63283	5026	3602
Nov:	47	18720	44326	63046	5029	3604
Dec	47	16718	43548	60266	5034	3610
Jan:	47	16829	46459	63288	5036	3616
Feb:	47	16240	39653	55893	5025	3600

* = Monthly average over eight months.

PERFORMANCE OF LIGHT ENGINEERING INDUSTRY

Report for the month of February 2022

RE-ROLLED STEEL

Coverage

This report covers forty one factories of Re-Rolled Steel in the Punjab Province.

Production

Forty one factories covered under the survey produced 26512 Metric Tons of steel bars/angles during February 2022, which was 0.7% lower than the last month.

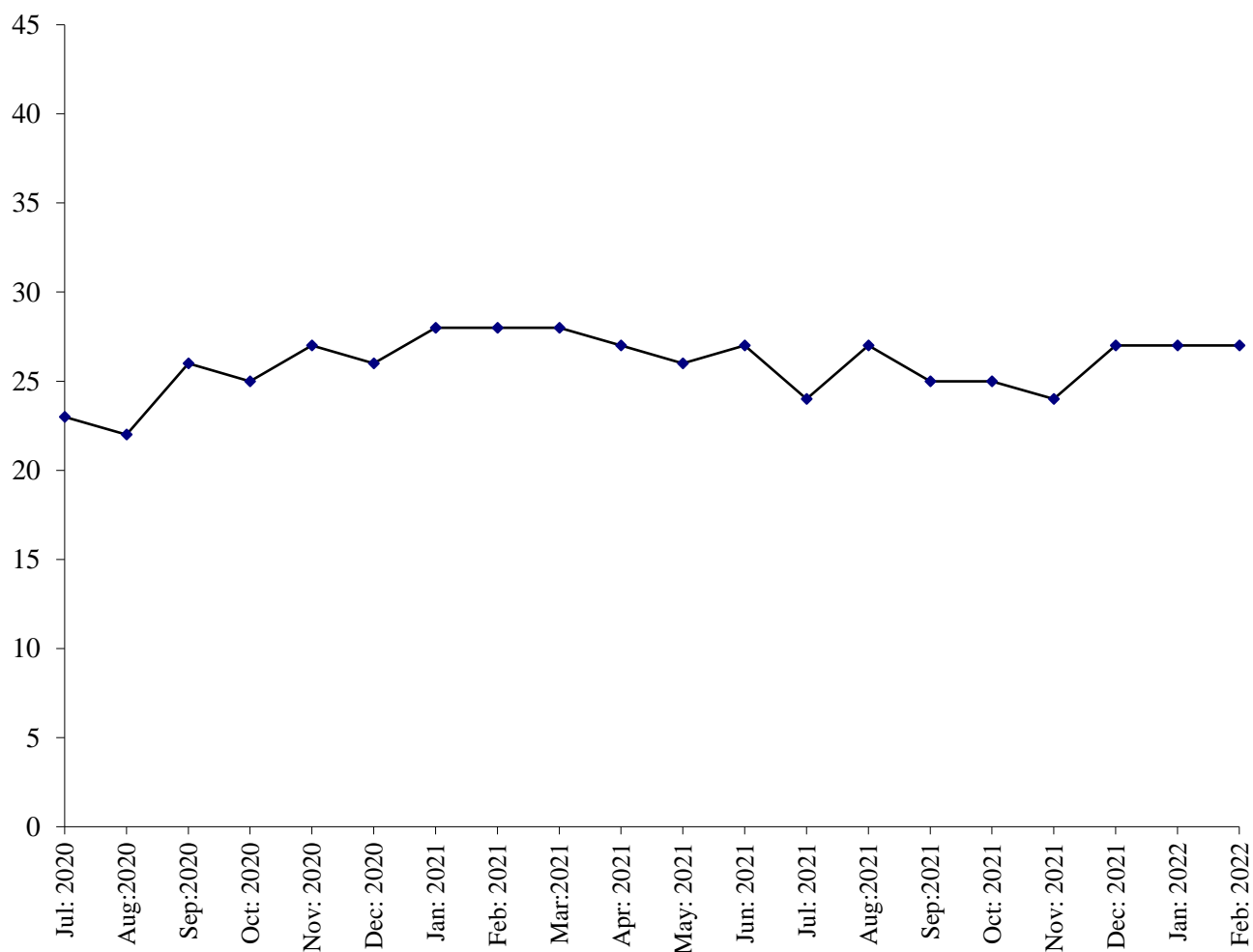
Employment

Total employment in the industry during the month was 1070, which was 0.9% higher than the last month. Out of this total employment, 788 were production workers.

PRODUCTION OF RE-ROLLED STEEL

July 2020 to February 2022

(000 M. Tons)



Coverage

This report covers three (3) factories of Bicycles in the Punjab.

Production

Three factories being covered in the survey manufactured and assembled 12129 complete bicycles during February 2022, which was 0.9% higher than the last month.

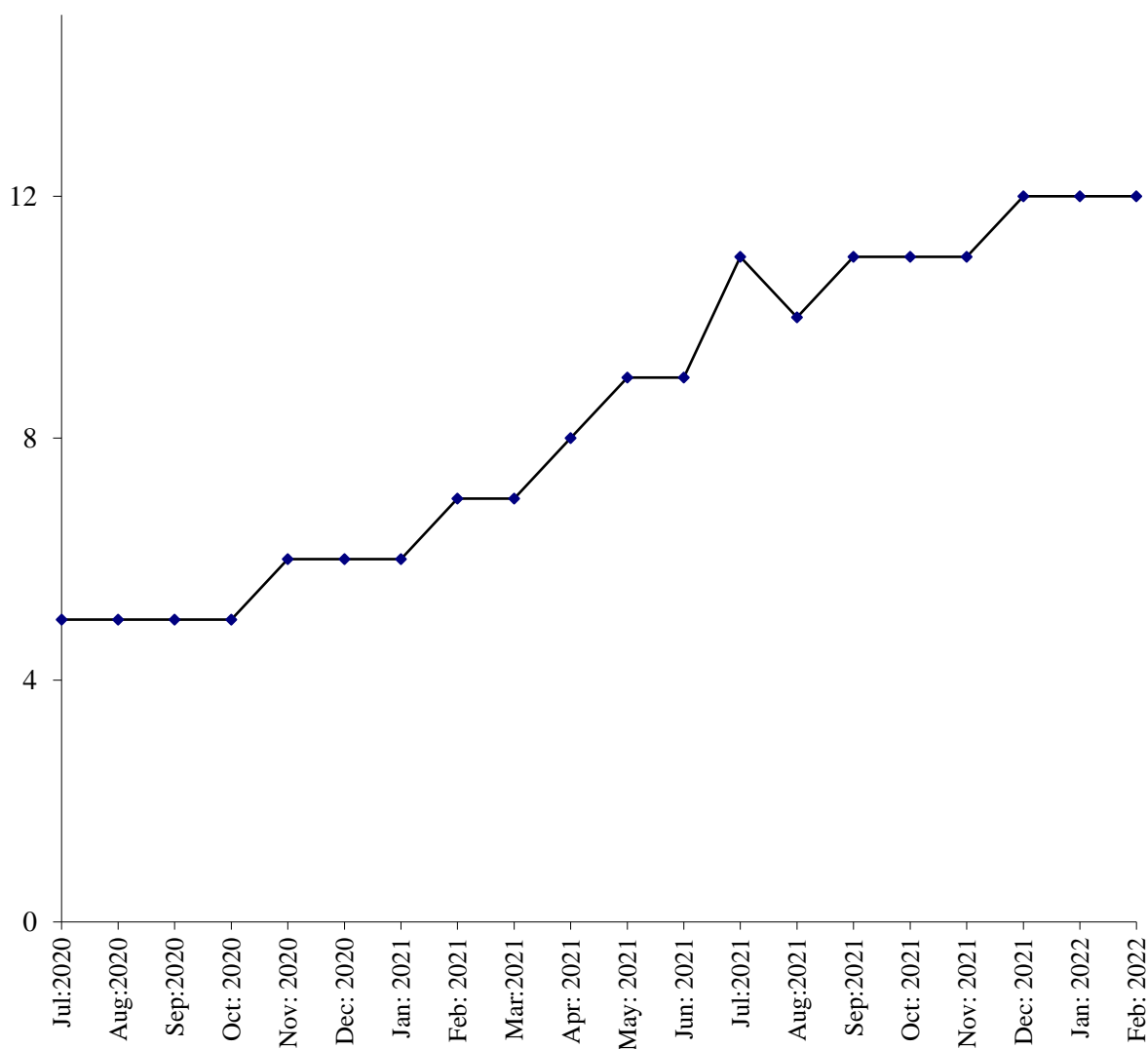
Employment

Total employment in these factories during the month was 686, which was same as the last month. Out of this total employment, 527 were production workers.

PERFORMANCE OF BICYCLES

July 2020 to February 2022

(000 M. Tons)



ELECTRIC FANS

Coverage

This report covers one hundred and twenty three (126) factories of Electric Fans in the Punjab Province.

Production

One hundred and twenty three factories covered under the survey manufactured 167449 (ceiling fans, 114742 pedestal fans, 35196 and other fans 17511) during February 2021, which was 1.1% lower than the last month.

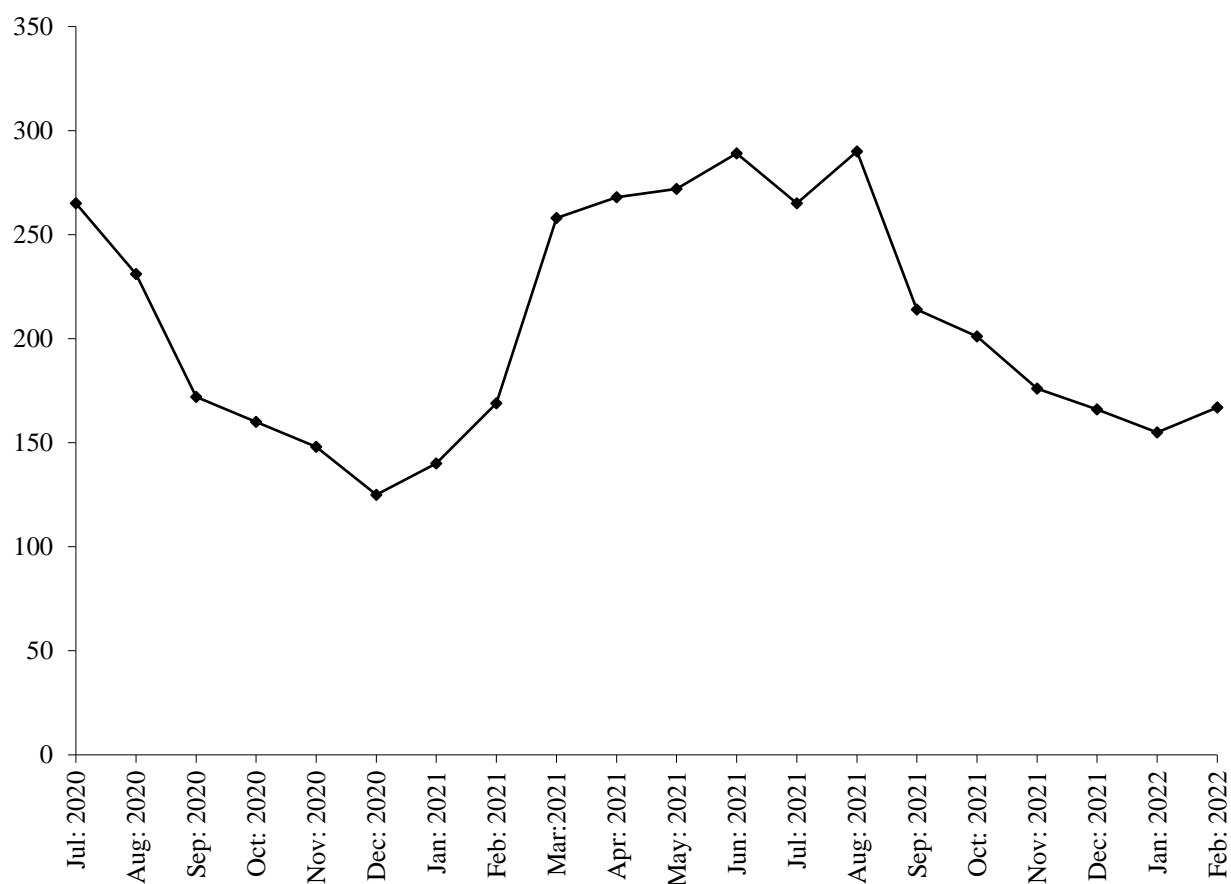
Employment

These factories reported 2050 total employment during the month, which was 2.0% higher than the last month. Out of this total employment, 1760 were production workers.

PERFORMANCE OF ELECTRIC FANS

July 2020 to February 2022

(000 Nos.)



ELECTRIC MOTORS

Coverage

This report covers thirty (30) factories of Electric Motors in the Punjab Province.

Production

Thirty factories covered under the survey manufactured 1754 electric motors during the month, which was 0.5% lower than the last month.

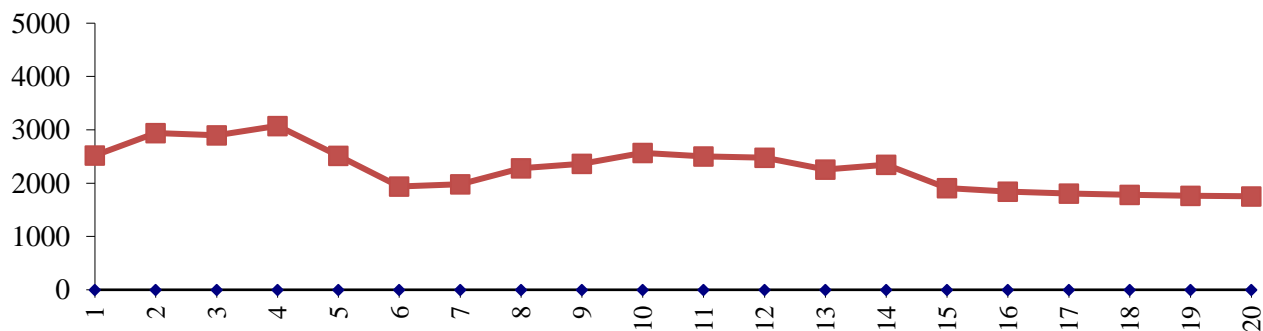
Employment

Total Employment in these factories during the month which was 194, which was 0.5% lower than the last month. Out of this total employment, 150 were production workers.

PRODUCTION OF ELECTRIC MOTORS

(Nos.)

July 2020 to February 2022



DIESEL ENGINES

Coverage

This report covers fifteen (15) factories of Diesel Engines in the Punjab Province.

Production

These fifteen factories covered under the survey and 133 complete diesel engines manufactured during the month, which was 1.5% higher than the last month.

Employment

Total employment in these factories during the month was 21, which is same as it was in previous month. Out of this total employment, 15 were production workers.

PRODUCTION OF DIESEL ENGINES

(Nos.)

July 2020 to February 2022

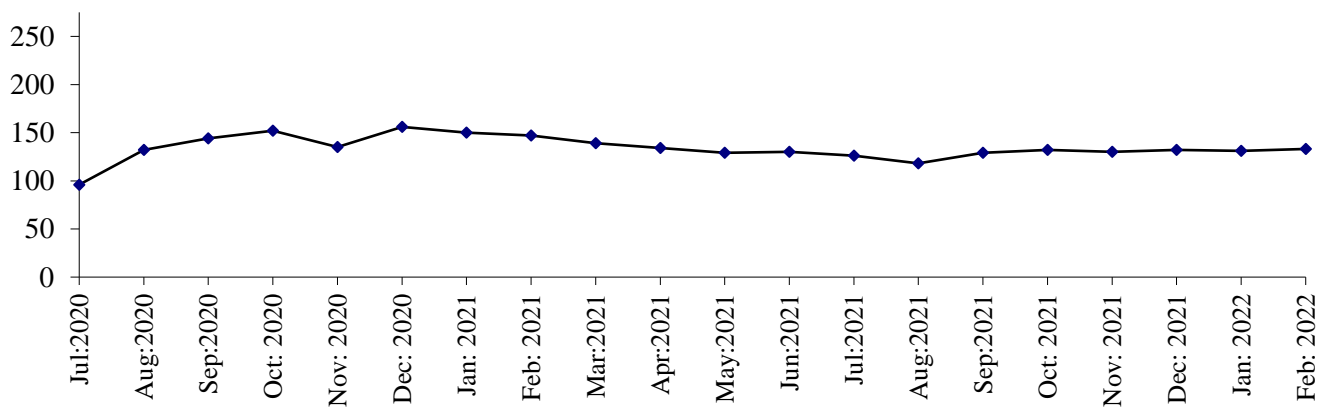


Table No: 32 MANUFACTURINGACTIVITYOFLIGHT ENGINEERING INDUSTRY

Year (July – June) / Month	Re-rolled Steel Bars / Angles (M. Tons)	Bicycles (Nos.)	Electric Fans (Nos.)	Electric Motors (Nos.)	Diesel Engines (N0s.)
2005-06	460257	589605	1398502	7893	10937
2006-07	490894	486349	1469494	7942	14997
2007-08	411062	535519	1654165	5818	18952
2008-09	343506	419897	1697140	6604	16906
2009-10	321369	447207	2128884	7068	20157
2010-11	312433	345272	1940346	7667	10285
2011-12	289874	262096	1858883	5857	2861
2012-13	266669	232979	1909412	5752	2219
2013-14	257569	206459	1870475	9906	2117
2014-15	264406	210931	1870291	9013	2045
2015-16	320769	198966	1970506	7319	495
2016-17	367619	200218	2461369	9206	1554
2017-18	485131	202168	2498919	41793	1120
2018-19	382890	173545	2508085	56819	908
2019-20	289350	141125	2124301	39312	1294
2020-21	312922	79310	2498634	30054	1644
(Jul: – Feb:)	<u>204389</u>	<u>45810</u>	<u>1411075</u>	<u>20142</u>	<u>1112</u>
Jul:	22664	5200	265313	2518.	96
Aug:	21705	5160	231015	2942	132
Sep:	25611	5300	172135	2900	144
Oct:	25316	5400	160052	3075	152
Nov:	27041	5550	148194	2516	135
Dec:	25719	5900	124997	1935	156
Jan:	27983	6400	139955	1978	150
Feb:	28350	6900	169414	2278	147
Mar:	27972	7300	257977	2363	139
Apr:	27429	8300	268484	2566	134
May	26487	8800	272189	2504	129
Jun:	26645	9100	288909	2479	130
<u>2021-22</u>					
(Jul: – Feb:)	<u>206177</u>	<u>90840</u>	<u>1634898</u>	<u>15453</u>	<u>1031</u>
Jul:	26742	10400	290116	2344	118
Aug:	24691	10700	265414	2257	126
Sep:	25191	11000	214096	1906	129
Oct:	25165	11402	201040	1844	132
Nov:	24414	11490	175414	1805	130
Dec:	26782	11700	165902	1780	132
Jan:	26680	12019	155467	1763	131
Feb:	26512	12129	167449	1754	133

Table No: 33 TOTAL EMPLOYMENT (Nos.) OF LIGHT ENGINEERING INDUSTRY*

Year (July – June)/ Month	Re-rolled Steel Bars / Angles (M.Tons)	Bicycles (Nos.)	Electric Fans (Nos.)	Electric Motors (Nos.)	Diesel Engines (N0s.)
2005-06	1224	2135	1823	126	199
2006-07	1165	2046	1867	112	199
2007-08	1106	2160	1881	72	199
2008-09	1103	2257	1894	69	200
2009-10	1134	2124	2124	63	223
2010-11	1218	2009	2120	64	191
2011-12	1193	1612	2351	64	155
2012-13	1188	1318	2172	58	147
2013-14	1269	1214	2307	64	154
2014-15	1299	1060	2208	63	154
2015-16	1317	907	2090	65	150
2016-17	1372	885	2325	121	146
2017-18	1310	883	2549	130	133
2018-19	1304	759	2673	158	52
2019-20	1013	751	1817	191	22
2020-21	1067	686	2141	197	20
(Jul: – Feb:)	<u>1051</u>	<u>686</u>	<u>2122</u>	<u>188</u>	<u>20</u>
Jul:	1038	696	2260	183	19
Aug:	1030	686	2230	183	19
Sep:	1048	686	2183	183	19
Oct:	1043	686	2160	183	19
Nov:	1049	686	2084	183	19
Dec:	1047	686	2020	180	21
Jan:	1100	686	2001	202	21
Feb:	1108	686	2040	210	21
Mar:	1100	686	2107	212	21
Apr:	1098	686	2141	218	21
May	1078	686	2189	216	21
Jun:	1078	686	2274	216	21
<u>2021-22</u>					
(Jul: – Feb:)	<u>1077</u>	<u>686</u>	<u>2111</u>	<u>203</u>	<u>21</u>
Jul:	1111	686	2260	215	21
Aug:	1082	686	2285	215	21
Sep:	1086	686	2141	209	21
Oct:	1061	686	2065	200	21
Nov:	1054	686	2050	198	21
Dec:	1072	686	2030	197	21
Jan:	1070	686	2010	195	21
Feb:	1080	686	2050	194	21

* = *Monthly averages over eight months.*

Table No: 34 PRODUCTION WORKERS (Nos.) OF LIGHT ENGINEERING INDUSTRY *

Year (July – June)/ Month	Re-rolled Steel Bars / Angles (M.Tons)	Bicycles (Nos.)	Electric Fans (Nos.)	Electric Motors (Nos.)	Diesel Engines (N0s.)
2005-06	880	1849	1476	99	165
2006-07	821	1814	1483	89	146
2007-08	780	1900	1545	62	157
2008-09	757	1905	1542	60	160
2009-10	782	1892	1748	57	154
2010-11	870	1843	1709	57	126
2011-12	857	1540	1904	57	99
2012-13	843	1289	1761	50	95
2013-14	905	1161	1850	55	99
2014-15	920	992	1745	54	100
2015-16	934	836	1658	56	97
2016-17	976	820	1865	113	93
2017-18	926	804	1994	119	86
2018-19	916	696	2066	122	34
2019-20	706	679	1425	147	15
2020-21	780	527	1735	151	14
(Jul: – Feb:)	<u>768</u>	<u>527</u>	<u>1716</u>	<u>142</u>	<u>14</u>
Jul:	723	537	1783	139	13
Aug:	711	527	1776	139	13
Sep:	774	527	1726	139	13
Oct:	769	527	1705	139	13
Nov:	775	527	1667	139	13
Dec:	770	527	1650	156	15
Jan:	810	527	1647	150	15
Feb:	815	527	1700	160	18
Mar:	810	527	1759	162	15
Apr:	819	527	1780	172	15
May	799	527	1790	168	15
Jun:	799	527	1840	169	15
<u>2021-22</u>					
(Jul: – Feb:)	<u>788</u>	<u>527</u>	<u>1788</u>	<u>158</u>	<u>15</u>
Jul:	810	527	1850	168	15
Aug:	785	527	1840	167	15
Sep:	788	527	1830	165	15
Oct:	783	527	1780	155	15
Nov:	780	527	1765	153	15
Dec:	785	527	1750	152	15
Jan:	785	527	1730	150	15
Feb:	788	527	1760	150	15

* = Monthly averages over eight months.

PERFORMANCE OF PHARMACEUTICAL INDUSTRY

Report for the month of February 2022

Coverage

This report covers thirty six (36) Pharmaceutical Industries in the Punjab Province.

Production

Overall production of these 36 pharmaceutical factories during the month was 3.7% and 6.0% higher than January, 2022 and February 2021 respectively.

These factories produced 316549 thousand Nos. of Tablets, 1237 thousand Ltrs., of Liquids/Syrups, 42758 thousand Nos. of Capsules, 16830 thousand Nos. of Injections, 32575 kgs. of Ointments and 2 thousand Ltrs. of Galanicals (Tincture/Spirits). The production of Tablets, Liquids and Capsules was 16.4%, 1.0% and 13.5% higher whereas the production of Injections, Ointments and Galanicals was 11.3%, 21.5% and 33.3% lower than the last month respectively.

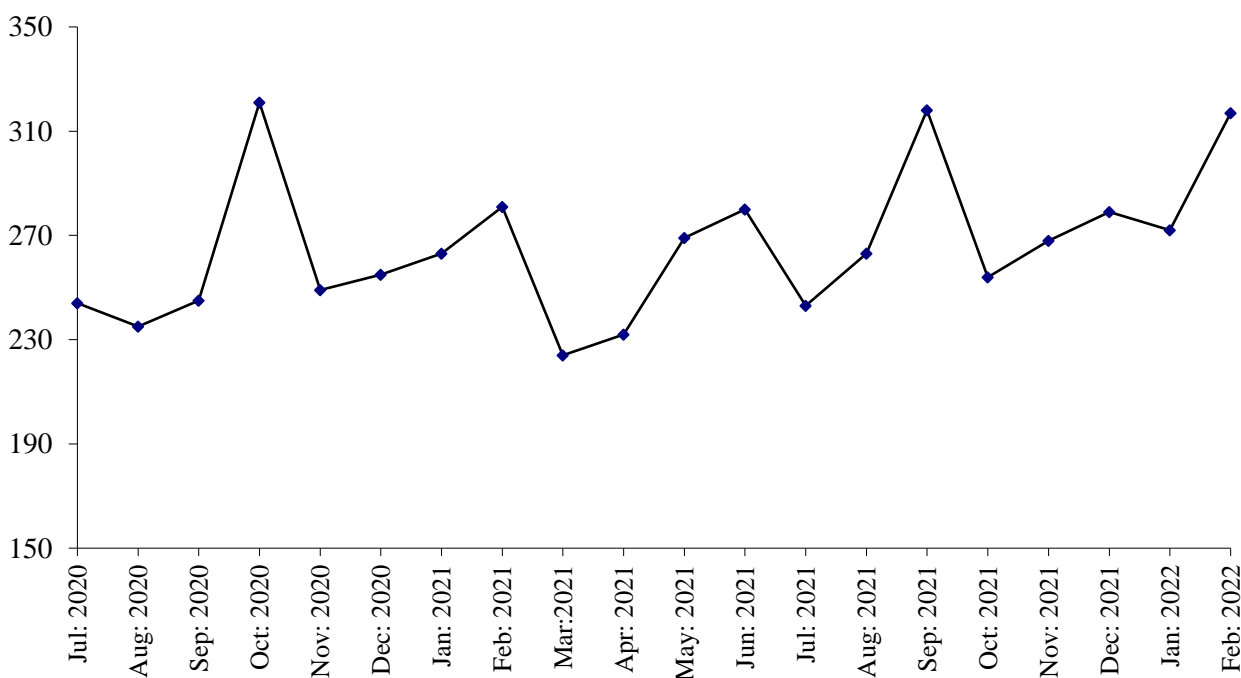
Employment

Total employment in these factories during the month was 8063 which is 0.1% higher than the last month. Out of this total employment 3324 were production workers. Total wages/salaries during the month were 260.3 million rupees.

PRODUCTION OF TABLETS

July 2020 to February 2022

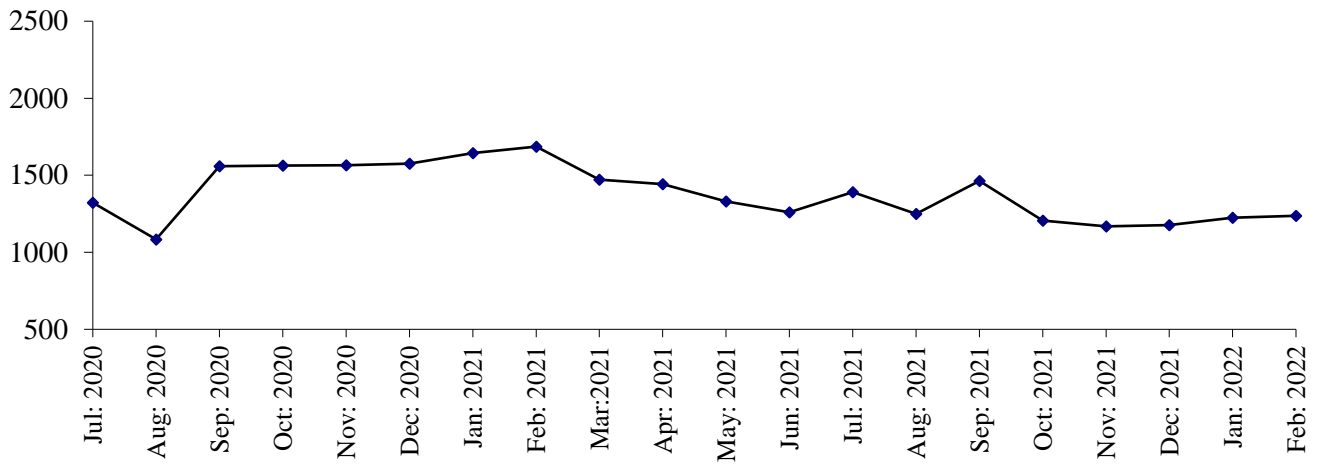
(Mill. Nos.)



PRODUCTION OF LIQUIDS

July 2020 to February 2022

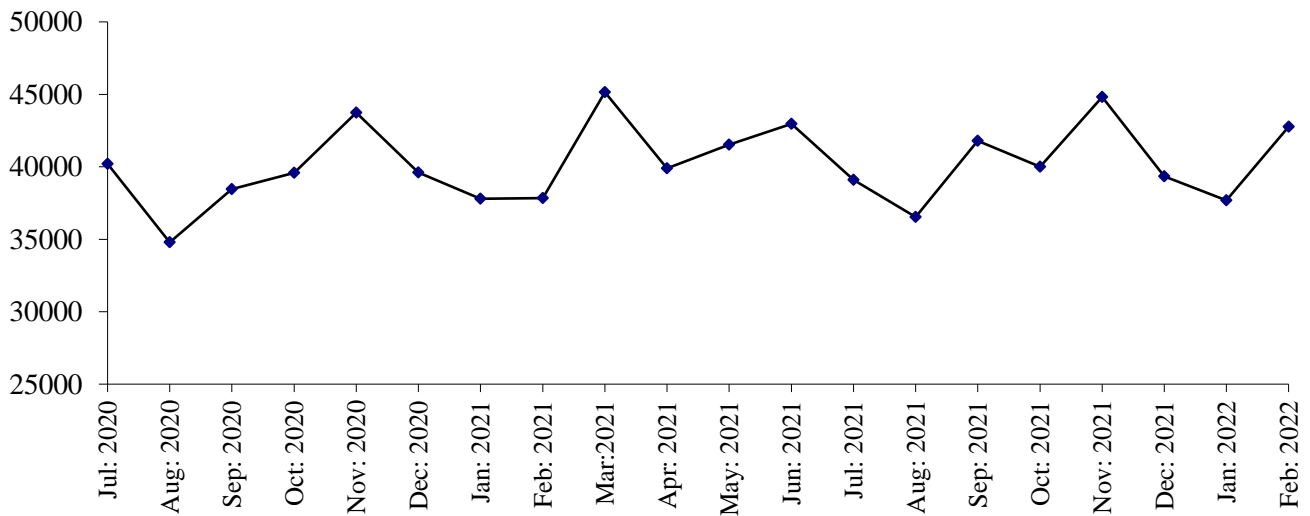
(000 ltr.)



PRODUCTION OF CAPSULES

July 2020 to February 2022

(000 Nos.)



PRODUCTION OF INJECTIONS

July 2020 to February 2022

(000 Nos.)

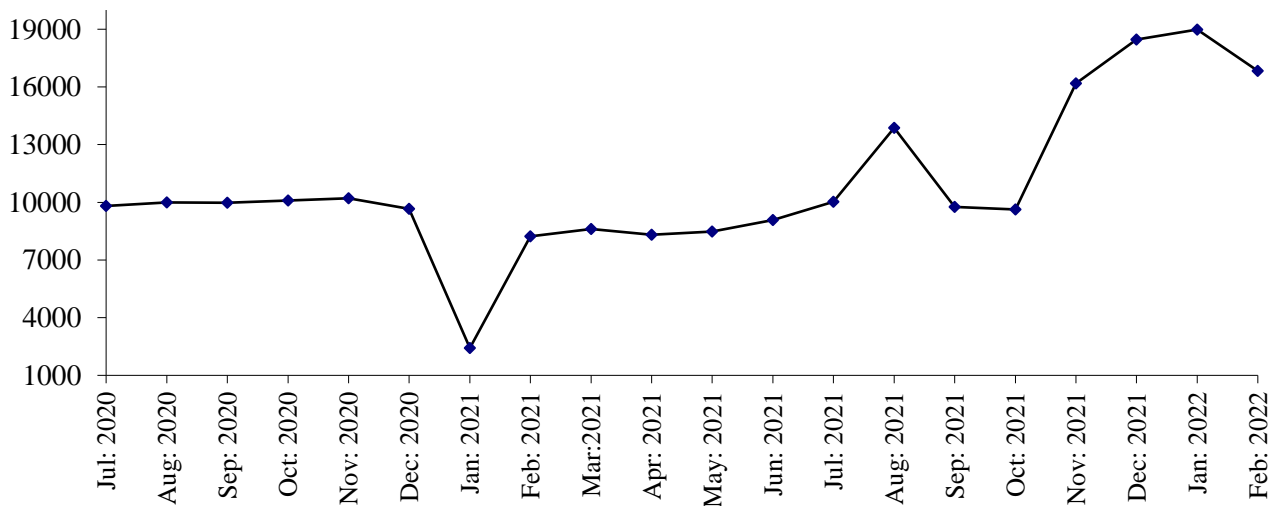


Table 35:MANUFACTURING ACTIVITY OF PHARMACEUTICAL INDUSTRY

Year (July – June) / Month	No. Of Reporting Factories	P R O D U C T I O N					
		Tablets (000 Nos.)	Liquids/ Syrups (000Ltrs.)	Capsules (000 Nos.)	Injections (000 Nos.)	Ointments (Kgs.)	Galanicals Tinctures/ Spirits (000 Ltrs.)
2005-06	33	2725926	7696	119968	78650	70911	289
2006-07	33	2722382	9277	131360	99050	69678	189
2007-08	38	2459558	23771	148007	110837	98499	87
2008-09	40	2286638	21267	121093	89615	105595	73
2009-10	40	2373104	23222	134594	99608	189148	62
2010-11	41	2486495	25211	165294	109708	187430	50
2011-12	41	2487861	25546	224249	132544	209841	41
2012-13	40	2873661	35457	339450	119598	196597	34
2013-14	36	2639613	16264	261919	137051	238299	185
2014-15	36	2593592	18838	310520	140827	229778	75
2015-16	36	2823449	21636	339151	133352	242367	46
2016-17	36	2530717	24085	295120	194717	732361	343
2017-18	35	2893883	15602	371962	149607	570468	121
2018-19	36	2826410	14207	420278	144788	567249	39
2019-20	36	2847315	14011	447276	119438	640721	74
2020-21	36	3096704	17504	481498	110866	595075	69
(Jul: - Feb:)	36	2091529	12001	311982	76374	385461	51
Jul:	36	243505	1323	40191	9811	50062	10
Aug:	36	234742	1084	34787	9987	45092	4
Sep:	36	244630	1559	38457	9980	46341	10
Oct:	36	321195	1564	39588	10086	49661	11
Nov:	36	249146	1566	43724	10209	50870	6
Dec:	36	254762	1575	39600	9654	48717	3
Jan:	36	263042	1644	37793	8421	48692	5
Feb:	36	280507	1686	37842	8226	46026	2
Mar:	36	223737	1471	45147	8617	46489	5
Apr:	36	232283	1443	39885	8315	48100	2
May	36	269201	1330	41528	8476	47586	5
Jun:	36	279954	1259	42956	9084	67439	6
2021-22							
(Jul: - Feb:)	36	2213078	10115	322007	113725	351010	38
Jul:	36	242868	1391	39093	10024	48632	3
Aug:	36	263232	1249	36537	13877	47480	5
Sep:	36	318031	1463	41783	9766	53293	6
Oct:	36	253686	1205	39993	9624	55395	4
Nov:	36	268300	1168	44809	16186	35665	8
Dec:	36	278537	1177	39348	18468	36490	7
Jan:	36	271875	1225	37686	18983	41480	3
Feb:	36	316549	1237	42758	16830	32575	2

Table 36: EMPLOYMENT AND WAGES / SALARIES OF PHARMACEUTICAL INDUSTRY

Year (July – June) / Month	No. Of Reporting Factories	E M P L O Y M E N T (Nos.)			W A G E S / S A L A R I E S (' 000 Rs.)	
		Total	Production Workers	Office Staff	Total	Production Workers
2005-06	33	5192	2652	2540	34221	13320
2006-07	33	5148	2596	2552	37178	14090
2007-08	38	5591	2914	2677	60574	27592
2008-09	40	5737	3115	2622	75446	35208
2009-10	40	5967	3294	2673	84295	41482
2010-11	41	7468	3475	3993	109964	38722
2011-12	41	7802	3518	4284	122250	38078
2012-13	40	7619	3397	4222	128323	37873
2013-14	36	7255	3043	4212	141281	37844
2014-15	36	7271	3136	4135	149144	37763
2015-16	36	6887	2887	4000	142875	38347
2016-17	36	7069	3338	3731	166039	42770
2017-18	35	7190	3095	4095	180431	46461
2018-19	36	7287	3080	4207	186677	48238
2019-20	36	7926	3244	4682	215121	53959
2020-21	36	7726	3388	4338	241910	59134
(Jul: - Feb:)	<u>36</u>	<u>7984</u>	<u>3436</u>	<u>4548</u>	<u>238848</u>	<u>59479</u>
Jul:	36	8136	3363	4773	241289	56225
Aug:	36	7853	3216	4637	223575	54259
Sep:	36	8134	3483	4651	237044	60536
Oct:	36	8138	3486	4652	241912	60803
Nov:	36	8143	3489	4654	242258	61337
Dec:	36	8184	3501	4683	241648	60961
Jan:	36	7859	3471	4388	242853	60784
Feb:	36	7424	3476	3948	240207	60926
Mar:	36	7155	3309	3846	228765	58070
Apr:	36	7148	3311	3837	243887	57413
May	36	7276	3277	3999	256930	59150
Jun:	36	7262	3269	3993	262546	59146
<u>2021-22</u>						
(Jul: - Feb:)	<u>36</u>	<u>8081</u>	<u>3315</u>	<u>4766</u>	<u>262428</u>	<u>59464</u>
Jul:	36	8252	3306	4946	247515	58344
Aug:	36	8013	3190	4823	257671	57722
Sep:	36	8073	3341	4732	261127	52000
Oct:	36	8108	3356	4752	270869	63056
Nov:	36	8054	3357	4697	280316	62227
Dec:	36	8033	3326	4707	261493	61262
Jan:	36	8055	3323	4732	260153	60755
Feb:	36	8063	3324	4739	260283	60348

* = Monthly average over eight months.

LIST OF IMPORTANT TELEPHONES
BUREAU OF STATISTICS, PUNJAB AND ITS FIELD OFFICES

NAME OF OFFICERS	DESIGNATION	OFFICE TELEPHONE
Sajid Rasul	Director General	042-99232901
Shamas Ul Huda	Deputy Director (CIS)	042-99232907
Sana Ashraf	Statistical Officer (CIS)	-do-
Muhammad Kashif	Statistical Officer (CIS)	-do-
Rizwan Bashir	Statistical Officer (CIS)	-do-
Mehboob Baig	Statistical Officer (CIS)	-do-
DESIGNATION	BUREAU'S FIELD OFFICES/ADDRESS	
Deputy Director	Tosha Khana Near Cholistan Development Authority, Bahawalpur	062-9250193
Deputy Director	House No. 70-A, Khyaban-e-Sarwar, Dera Ghazi Khan	064-9330108
Deputy Director	2nd Floor Azam Plaza, Near Passport Office, Bukhari Road, Gujranwala	055-9200419
Deputy Director	P-45, Main Road, Al Faiz Colony, Satiana Road Faisalabad	041-9330531
Deputy Director	Near Circuit House, Multan	061-9200930
Deputy Director	Abad Complex Murree Road, Rawalpindi	051-9292035
Deputy Director	52 Umar Park, Sargodha	048-3765387
Deputy Director	34-H Shadman Town, Sahiwal	0404-4507560
Assistant Director	House No. 24, Z-Block, Model Town, Bahawalnagar	063-9330002
Assistant Director	Mohallah Mandi Town, House No.198 Block No. 12 Near Pracha Filling Station, Jhang Road, Bhakkar	0453-9200338
Assistant Director	Street No.4 2nd Floor Mohallah Shumali Chah Loharn Behkari Road, Chakwal	0543-554086
Assistant Director	House No.720-A Gulberg Colony, Kasur	049-2723615
Assistant Director	House No. 190, Employees Colony, Layyah	0606-920273
Assistant Director	Gallah Huntar Pura, Opposite Larri Adda, Christian Town, Sialkot	052-4291219
Assistant Director	Opposite Govt. Vocational College, Nabi Pura, Hiran Minar Road, Sheikhupura	056-3791770